



SEATTLE
YACHT
CLUB



a family of people who love boating

When asked what they like most about the Seattle Yacht Club, member responses have a recurring theme: camaraderie. There's a spirit of friendship and community here, that makes everyone feel welcome.



"For me, SYC has been central to my sailing career. I learned to sail in SYC's summer sailing school and have been racing under the SYC burgee ever since."

Jen Morgan-Glass
3RD GENERATION
MEMBER. SINCE 1994

With more than 2,500 members, the Seattle Yacht Club is among the largest in the country. Despite our size, when you tie-up dockside or step inside the clubhouse, you're met with an extended hand – ready to assist or simply to greet you with a smile. Some call it Northwest hospitality. We call it the Seattle Yacht Club family.

Our membership is diverse – including singles and families, pleasure boaters and world-class athletes, and both power and sail enthusiasts. While the majority of our members call the Seattle area their home, many from out-of-state are proud to fly the SYC burgee on their bow.

One thing is for certain. No matter where our members anchor, everyone feels at home on the water.



pleasure boating in Seattle since 1892

In August of 1892 the first actual clubhouse was located in West Seattle. In 1909, Seattle Yacht Club merged with the Elliott Bay Yacht Club. Our existing clubhouse on Portage Bay officially opened May 1, 1920.



Our present club house, on Portage Bay, in 1920. It was designed by world famous architect John Graham Sr. and has since been registered as a City and State Landmark and is also listed in the National Historic Registry.

Today, the clubhouse sits on the National Historic Registry and includes a great hall where you'll find displays of trophies, photos, burgees and memorabilia collected over the years.

We take great pride in our traditions – both formal and informal. From the bylaws that shape our organization, to the codes of conduct we practice on and off the water, we embrace our position among the nation's premier yacht clubs. Each year, more than 200 members volunteer their time to orchestrate a city-wide celebration

of Opening Day – a signature event of the Seattle Yacht Club and a Seattle institution.

We are also committed to giving back to our communities by promoting water safety, sponsoring Seafair's Holiday Cruise on Lake Washington, and raising funds to support the SYC Foundation.



2017 OPENING DAY TRIO:
*Admiral Bruce Campbell,
Admiral Sandy Bell,
Vice Admiral Randy Holbrook*



BELOW:
The Seattle Yacht Club in West Seattle, c.1912. (MOHAI)



MIDDLE: *These unknown Elliott Bay Yacht Club Sailors were awarded their prizes in 1899. The burgee, bottom right, was retained when EBYC and the SYC merged in 1909. (SYC Dick Griffiths collection)*

BOTTOM: *Budlong's Boathouse, built in 1880, became the first home of Seattle Yachtsmen and was said to be the original gathering place for the yet to be officially formed Seattle Yacht Club. (MOHAI)*

from all walks of life, we love being on the water

Our diverse membership includes singles and families, America's Cup competitors and Olympic medalists, those new to boating and others with stories that date back generations.



"A Seattle Yacht Club membership is the ultimate experience in boating."

Pat Goodfellow
MEMBER SINCE 1976

We come together over a love of boating. Perhaps one of the best expressions of that love is our annual sponsorship of the Opening Day of Boating Season. On the first Saturday in May, a week of activities culminates with an international rowing regatta, hailed as one of the

largest spectator sporting events in the world. It is followed by a spectacle of more than 300 colorful boats carrying costumed crew and passengers on a parade route through the Montlake Cut. The festivities are the nation's largest nautical celebration honoring the arrival of boating season.



On May 1st, 1920 the Seattle Yacht Club formally dedicated its new home on Portage Bay. Those Opening Day ceremonies established traditions that are still followed to this day.



TOP: University of Washington Husky band boats proceed through the Montlake Cut during the Opening Day parade.

LEFT: A beautiful fleet of dressed sail boats parade through the Montlake Cut during an Opening Day parade.

RIGHT: Members enjoying the "Hawaiian Magic" Opening Day 2013 Kick-Off Event.



BOTTOM: Members of an ambassador crew greet the crowd gathered on one of the log booms before the start of the 2015 Windermere Cup Saturday.

PHOTO: JOHN LOK/THE SEATTLE TIMES

where ever the winds take you, we're there, too

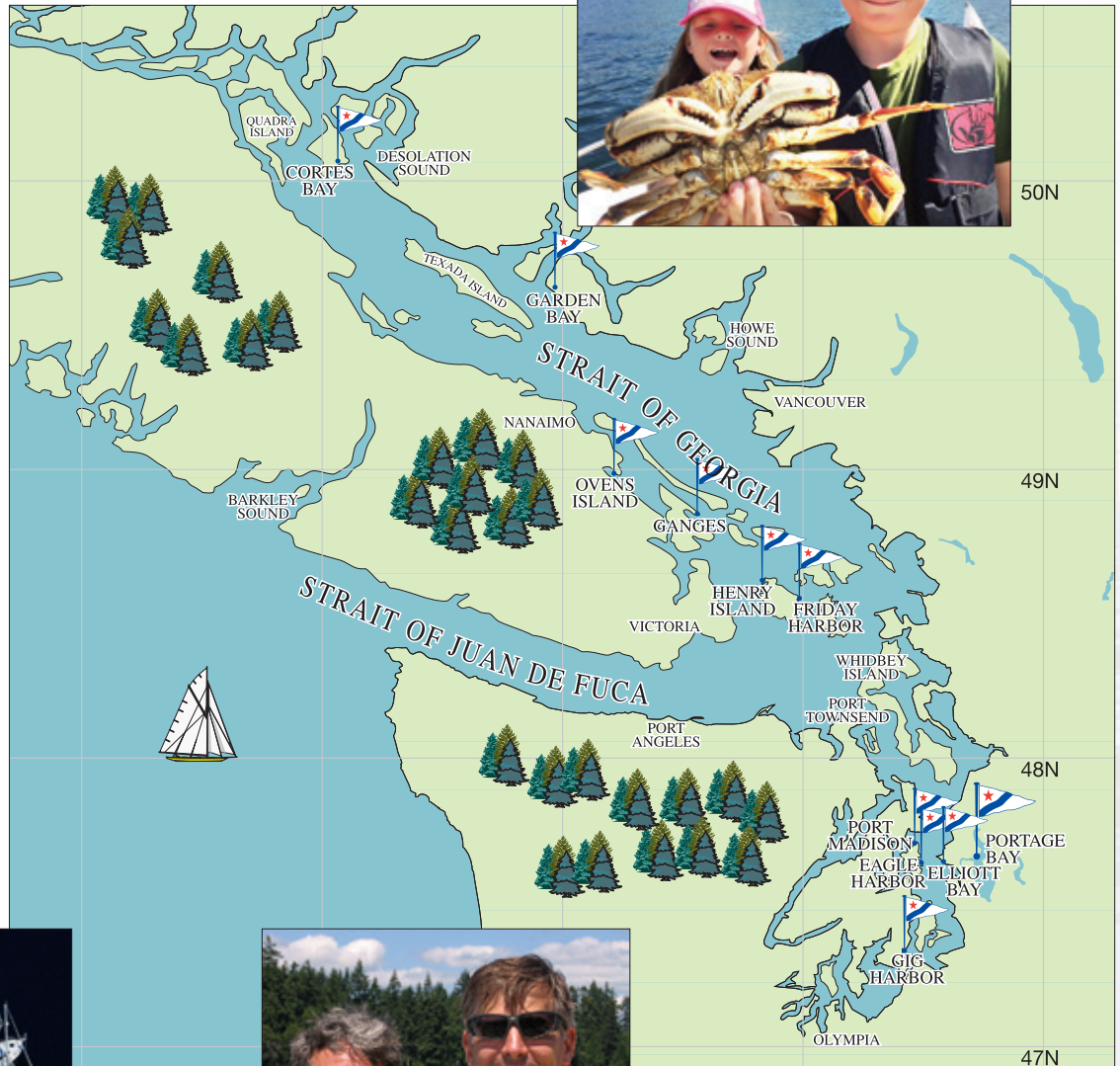
Seattle Yacht Club members enjoy access to 10 regional outstations with reciprocity privileges at clubs tracing the shores of the world's oceans.

Our mainstation is located on Portage Bay. But boating is not about dock space. It's about the open waters in between. That's why our membership extends beyond the Puget Sound with 10 outstations throughout the San Juan Islands and north into Canada.

Most locations offer ice, electrical, laundry and other amenities. Impromptu happy hour events, known as "Greenboxes," are commonplace. And select locations play host to various events and social activities throughout the year.

If it's uncharted waters you seek, more than 200 reciprocal yacht clubs await your arrival in cities around the globe – from Singapore to Sydney.

A star raft of members in Montague Harbour during the annual Commodore's Cruise.



Family fun at Port Madison



"When I joined Seattle Yacht Club in 1965, it was an honor to race as a member; today, 44 years later, I am equally proud to race under the SYC burgee."

Jim Marta
MEMBER SINCE 1965

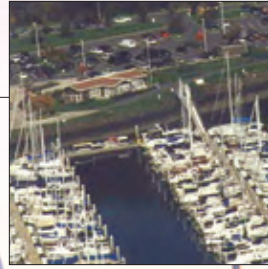




Cortes Bay Outstation
CORTES ISLAND,
BRITISH COLUMBIA



Eagle Harbor Outstation
BAINBRIDGE ISLAND



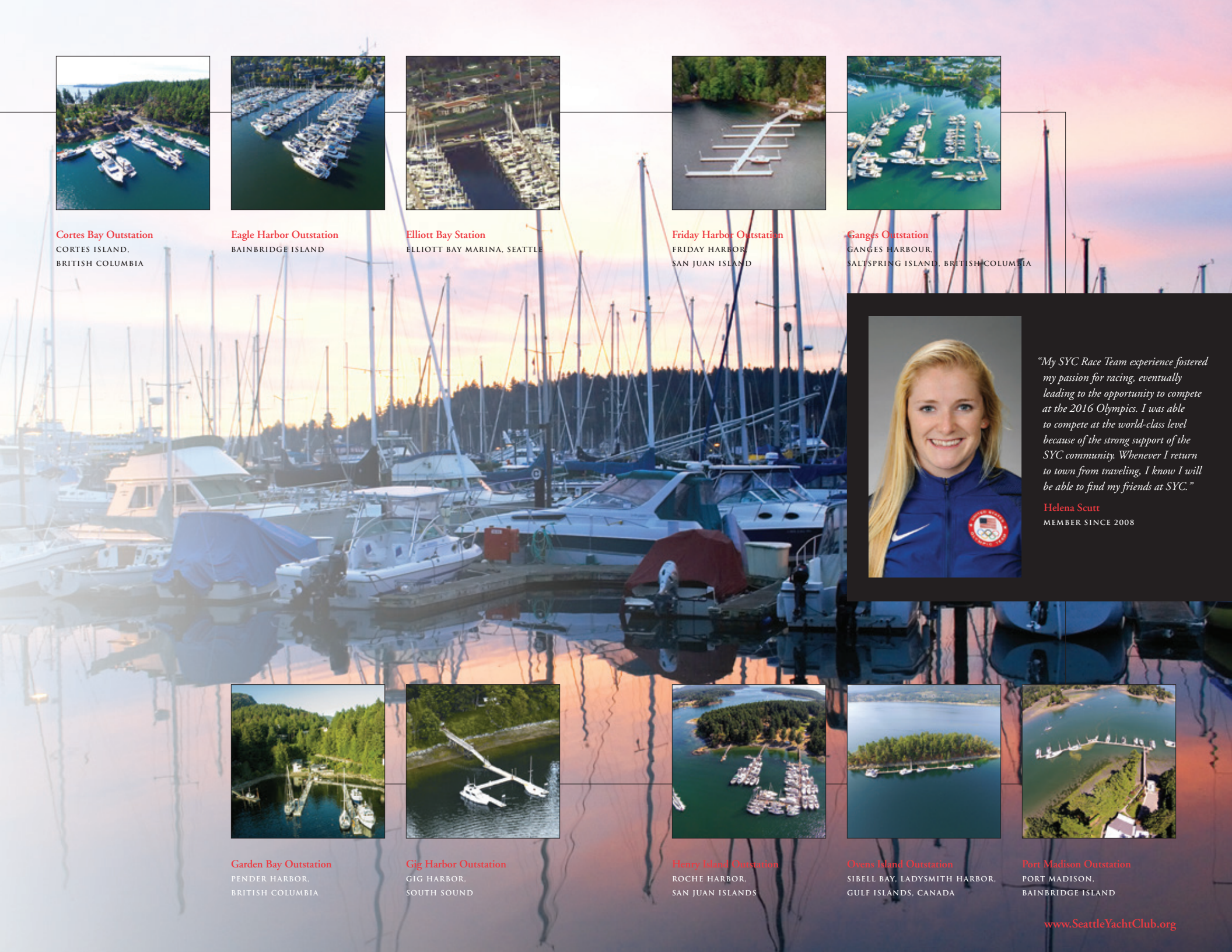
Elliott Bay Station
ELLIOTT BAY MARINA, SEATTLE



Friday Harbor Outstation
FRIDAY HARBOR,
SAN JUAN ISLAND



Ganges Outstation
GANGES HARBOUR,
SALTSPRING ISLAND, BRITISH COLUMBIA



"My SYC Race Team experience fostered my passion for racing, eventually leading to the opportunity to compete at the 2016 Olympics. I was able to compete at the world-class level because of the strong support of the SYC community. Whenever I return to town from traveling, I know I will be able to find my friends at SYC."

Helena Scutt
MEMBER SINCE 2008



Garden Bay Outstation
PENDER HARBOR,
BRITISH COLUMBIA



Gig Harbor Outstation
GIG HARBOR,
SOUTH SOUND



Henry Island Outstation
ROCHE HARBOR,
SAN JUAN ISLANDS



Ovens Island Outstation
SIBELL BAY, LADYSMITH HARBOR,
GULF ISLANDS, CANADA



Port Madison Outstation
PORT MADISON,
BAINBRIDGE ISLAND

there's something for everyone at seattle yacht club

With more than 75 volunteer-run committees and dozens of activities every month, the good times multiply by land and by sea.



"All the friends we have made throughout the years have made our lives richer, on the water and in our community."

Alison Allen Urback
3RD GENERATION
MEMBER SINCE 1978

We have groups for sailors, power boaters and rowers with events ranging from competitive racing, to sailing classes to leisurely cruising. Regular men's and women's luncheons include guest speakers on a variety of topics. Friends gather 'round shared hobbies such as golf, book groups, an amateur radio group,

chorus, fishing, knitting, and more. Social opportunities abound with functions including Commodore's Ball, Comedy Night, Powerboat Rendezvous, Sailboat Rendezvous, Opening Day festivities and dining in the Ward Room and Marine Room. Also, the "Dinghy" group arranges excursions to local museums, sporting events and more. Teens, young couples and families have lots of opportunities to make new friends in and around the Club.



Members enjoying their love of boating, involvement in activities and meeting new friends.



"SYC has been a second home to me since I became a member. I have made friends and memories here that I will have for the rest of my life"

Rob Munn
2ND GENERATION
MEMBER SINCE 2004
PHOTO: LONG PHOTOGRAPHY



BECOME A MEMBER

join the seattle yacht club family today

We invite you to consider membership with the Seattle Yacht Club. To learn more about the application process, please visit www.SeattleYachtClub.org.



"The camaraderie of SYC's members, many of whom have become life long friends, has made the Seattle Yacht Club a very special place for me."

Sally Johnson

MEMBER SINCE 1976

To help everyone feel welcome, we announce new members in our monthly newsletter, *Binnacle*, and host a variety of new member events. We also issue a new member burgee so we can introduce ourselves and show you around. You'll feel like a member of the family in no time.



SYC members enjoy gathering for "Greenbox" meals and BBQs, sharing sea stories.



Environmental Benefits

TREES: The fiber used to create this paper traveled an average of 75 miles from its origin to the mill. That's less than a trip from Miami to West Palm Beach.

WATER: 6,023 gallons of water were used in manufacturing process, including water returned to the source. The amount of water not returned to the source equals the water an average American family of four uses in 1 day.

RENEWABLE ENERGY: 15% renewable energy was used. Sources include: biomass, hydropower, natural gas, purchased electricity, and purchased steam.

EMISSIONS: This paper resulted in a total of 717 pounds of GHG emissions. This is equivalent to the emissions of one average passenger vehicle in 1 week.

SOLID WASTE: 81 pounds of waste were generated in the process of creating this paper. This is equivalent to the waste produced by the average U.S. household in 7 days.



SEATTLE YACHT CLUB

www.SeattleYachtClub.org

1807 EAST HAMLIN STREET TEL: 206.325.1000
SEATTLE, WA 98112 FAX: 206.324.8784

