



Seattle Yacht Club

Established in 1892

Grand Prix Invitational Regatta

October 21-23, 2016

Sailing Instructions

1 RULES

- 1.1 This regatta will be governed by the rules as defined in the Racing Rules of Sailing (RRS). Seattle Yacht Club is the organizing authority.
- 1.2 The prescriptions of US Sailing to the following rules shall apply: RRS 34, 40, 48.1, 56, 60, 61.4, 63.2, 63.4, 64.3(b), 67, 70.5(a), 76.1, 82, 86.3, 88.2, Appendix G, R, and T. These prescriptions are available from the US Sailing website at www.ussailing.org.
- 1.3 A boat rated by her handicap class in consideration of water ballast may use water ballast as rated. This changes RRS 51.
- 1.4 When the protest committee decides that a boat has broken a rule of Part 4, it is not required to disqualify the party, but may impose a lesser penalty or issue a warning. This changes RRS 64.
- 1.5 Changes to the rules may be noted elsewhere in the Notice of Race or Sailing Instructions. If the Notice of Race and Sailing Instructions are in conflict, the Sailing Instructions shall have precedence.

2 NOTICES TO COMPETITORS

- 2.1 Notices to competitors will be posted on the official notice board. The official notice board will be located at the south entrance of the Seattle Yacht Club Portage Bay clubhouse and optionally on the Seattle Yacht Club website at www.seattleyachtclub.org. On days of racing, the official notice board will move temporarily to the east entrance of the Corinthian Yacht Club clubhouse, and return to the original location after racing on Sunday.
- 2.2 The race committee may provide unofficial communication at any time by hail or over VHF 72. Any communication not governed by the rules is unofficial communication. A request for redress may not be based on any aspect of unofficial communication, including content, timeliness, existence, or failure to hear. This changes RRS 62.1(a).

3 CHANGES TO SAILING INSTRUCTIONS

- 3.1 Changes to the Sailing Instructions posted on the official notice board will be posted by 0900 the day it will take effect, except that any change in the schedule of races will be posted by 1800 the day before it will take effect.

4 SCHEDULE

- 4.1 The schedule is as follows:

Friday

| | |
|--------------|-----------------------------------|
| 1000 – 1130 | Check in at Corinthian Yacht Club |
| 1130 – 1145 | Competitor's briefing at CYC |
| 1300 | First warning signal |
| 1700 | No warning signal after this time |
| After racing | Social at CYC |

Saturday

| | |
|--------------|-----------------------------------|
| 0930 | RC Announcement on VHF |
| 1030 | First warning signal |
| 1700 | No warning signal after this time |
| After racing | Social at CYC |

Sunday

| | |
|------|---|
| 0930 | RC Announcement on VHF |
| 1030 | First warning signal |
| 1500 | No warning signal after this time |
| 1800 | Awards Dinner Party at Seattle Yacht Club |

- 4.2 Multiple races may be sailed each day. The Race Committee has discretion to select buoy and mid-distance courses based on anticipated conditions. On Saturday and Sunday at 0930 the Race Committee will make an announcement on VHF 72 regarding their intentions for that days racing.

5 SIGNALS MADE ASHORE

- 5.1 Signals made ashore will be displayed from a race committee signal boat while moored at Shilshole Marina within sight of dock X.
- 5.2 When flag AP is displayed ashore, the warning signal will be made not less than 30 minutes after the removal of AP unless at that time the race is postponed again or abandoned. This changes RRS Race Signals AP.

6 RACING AREA AND RACE COMMITTEE SIGNAL BOAT

- 6.1 The racing area is Puget Sound, north of Alki Pt. and south of Pt. Wells. The starting line will be in the vicinity of Shilshole Bay and the area north of Meadow Point.
- 6.2 The race committee signal boat will be the Seattle Yacht Club M/V *Portage Bay*. If necessary, an alternate race committee signal boat may be used. The race committee



Seattle Yacht Club

Established in 1892

signal boat will display the Seattle Yacht Club burgee and a blue “R/C” flag or sign.

7 CLASSES

- 7.1 Classes to race are ORC, PHRF Northwest, and One-Design keelboats of at least 24 feet with at least five boats. Other classes may race at the discretion of the organizing authority. Monohull and multihull boats will race in separate classes.
- 7.2 The classes, class flags, and boat class assignments will be announced as a notice to competitors issued by 1800 on Thursday. Subsequent changes may be made with the same process as changes to the Sailing Instructions.
- 7.3 Boats are requested to fly a class identification pennant from the backstay or, if there is no backstay, the highest point on the stern while racing. The class identification pennant will be supplied at check in on Friday.

8 COURSES

- 8.1 Courses will be signaled from a reader board on the race committee signal boat. The reader board will have three rows: top, middle, and bottom. Each class will be designated one of these rows, which will be announced with the classes, to signal the course for that class.
- 8.2 The course description on the reader board will be a series of letters on one row indicating the marks and their required sequence. The first letter displayed is the starting mark buoy, the last letter is the finishing mark buoy, and the letters between are rounding marks.
- 8.3 The marks are specified in Attachment A: Mark Descriptions.
- 8.4 All rounding marks shall be left to port. When mark S or F is used as a rounding mark, a boat must also pass between the mark and the race committee signal boat when rounding.
- 8.5 If a starting or finishing mark is substituted by an object displaying flag M, repetitive sound signals are not required. This changes RRS 34(b).
- 8.6 After completing the first leg of the course, a boat shall not cross the finishing line unless she is finishing, or rounding the finishing mark buoy as a rounding mark.

9 THE START

- 9.1 The starting line will be between a staff displaying an orange flag on the race committee signal boat and the course side of the starting mark buoy.
- 9.2 If a general recall for a preceding class is signaled after the warning signal of a succeeding class, then the visual signals for the succeeding class will be removed and the start of the succeeding class will be considered abandoned without further signal.
- 9.3 If a boat is subject to RRS 29.1, Individual Recall, or RRS 30, Starting Penalties, the race committee may attempt to hail her sail number directly or on VHF 72. This is unofficial communication as in Sailing Instructions 2.2.

- 9.4 A boat starting later than 10 minutes after her starting signal will be scored Did Not Start (DNS). This changes RRS A5.
- 9.5 A boat whose warning signal has not been made shall avoid the starting area when other boats are racing but have not yet started.
- 9.6 The race committee signal boat, when a starting mark, may maneuver to maintain the starting line at any time, including while anchored. This changes RRS 27.2.

10 THE FINISH

- 10.1 The finishing line will be between a staff displaying a blue flag on the race committee signal boat and the course side of the finishing mark buoy.
- 10.2 The race committee may adjust the finishing marks to maintain the finishing line at any time without regard to RRS 33.
- 10.3 The race committee signal boat may display a flashing green and yellow light when on station at the finishing line at night.

11 TIME LIMIT

- 11.1 The time limit is the maximum allowable time from a boat’s starting signal to her finish time. The time limit for the first boat will be posted, as a number of hours, on the course reader board after the course.
If no time limit is posted, the time limit for the first boat is 4 hours. A boat that does not finish within her time limit will be scored Did Not Finish (DNF). This changes RRS 35.

12 PROTESTS

- 12.1 A boat intending to protest or request redress for an incident that occurred while racing must orally notify the race committee on the signal boat as soon as reasonably possible after retiring or finishing by hail, or on VHF 72 until she receives confirmation from the race committee. This changes RRS 61.1(a).
- 12.2 Written protests and requests for redress must be delivered within the protest time limit to a representative of the protest committee or race committee at the race committee signal boat, or near the official notice board.
- 12.3 The protest time limit will be posted on the official notice board after racing each day. The protest time limit is 45 minutes after the docking of the Race Committee Signal Boat, or 15 minutes after the posting of the time limit, whichever is later. The official Notice Board reverts to Seattle Yacht Club after racing Sunday, and Sunday protests will be heard at Seattle Yacht Club.
- 12.4 Hearing notices will be posted on the official notice board within 5 minutes after the protest time limit to inform parties of the time and place of the hearing. Hearings may commence at any time if parties are present and prepared; otherwise, hearings may be



Seattle Yacht Club

Established in 1892

scheduled as early as 10 minutes after the protest time limit. The posting of hearing notices shall be considered notice as required by RRS 63.2.

12.5 A boat may not protest another boat for Sailing Instructions 9.5. This changes RRS 60.1(a).

12.6 Penalties under Sailing Instructions 9.5 or 14 may be less than disqualification. This changes RRS 64.1.

13 SCORING

13.1 Boats will be scored in class.

13.2 Corrected times for PHRF Northwest handicap classes will be calculated using the Time on Time method as defined by PHRF Northwest. The "A Factor," which does not impact result standings, will equal the "B Factor." The "B Factor" for each race will be determined by the race committee, using the following criterion:

| <u>Conditions</u> | <u>Approx. Average Winds</u> | <u>B Factor</u> |
|-------------------|------------------------------|-----------------|
| Light Winds | 0 to 7 knots | 650 |
| Medium Winds | 8 to 14 knots | 550 |
| Heavy Winds | 15+ knots | 480 |

The race committee's judgment in applying this criterion shall not be grounds for a request for redress. This changes RRS 62.1(a).

13.3 A boat that did not start (DNC, DNS, OCS), did not finish (DNF), retired (RET), or is disqualified (DSQ, DNE, DGM, BFD) will be scored the number of finishers plus one. This changes RRS A4.2 and A9.

13.4 A boat's series score will be the total of her race scores, except that a boat's worst score will be excluded if six or more races are completed in the series. This changes RRS A2.

13.5 One race will constitute a series.

14 EQUIPMENT AND OPERATING REQUIREMENTS

14.1 Boats must check in with the race committee signal boat at the starting area each day before their first warning signal. Boats should check in by hail unless safety requires checking in by VHF 72.

14.2 A boat that retires while racing must orally notify the race committee as soon as reasonably possible after retiring by hail or VHF 72.

14.3 A boat racing in a handicap class must comply with one of the two following sets of equipment requirements, (a) or (b):

(a) *Pacific International Yachting Association (PIYA) Special Regulations Governing Minimum Equipment and Accommodation Standards (PIYASR)*, as changed by the Notice of Race, to Category **Nearshore** requirements. The text of these regulations is available from the PIYA website at www.piyasailing.net.

(b) *ISAF Offshore Special Regulations (OSR)*, without US Sailing prescriptions, as changed by the Notice of Race, to **Category 5** requirements. The text of these regulations is available from the International Sailing Federation (ISAF) website at www.sailing.org/documents/special-regs.

14.4 Boats must comply with U.S. Coast Guard regulations.

14.5 Boats must be operated in accordance with the Puget Sound Sailboat Safety Regulations, available in the Seattle Yacht Club Sailboat Race Book available at www.seattleyachtclub.org.

14.6 The race committee may inspect a boat at any time before or after racing for compliance with requirements.

14.7 A boat may use its propulsion engine as described in RRS 42.3(i) for any purpose described in 42.3(h), or to stay clear of a vessel not participating in the race. The use of a propulsion engine shall be reported to the Race Committee with the reason for the use and description of any benefit to the boat's position resulting from said use.

15 SOCIAL ACTIVITIES AND AWARDS

15.1 Social events after racing on Friday and Saturday will be at Corinthian Yacht Club. Awards Dinner Party will be at Seattle Yacht Club after racing on Sunday, with buffet at 1800.

15.2 Take home trophies will be awarded for the top three boats in each class. Perpetual trophies will be awarded to the top boats in each class



Seattle Yacht Club

Established in 1892

ATTACHMENT A: Mark Description

Buoy Course Marks (position relative to R/C)

**Buoy Course Marks
(Position relative to RC)**

Intended Wind Direction

A (Green)

B (Yellow)

X (Yellow)

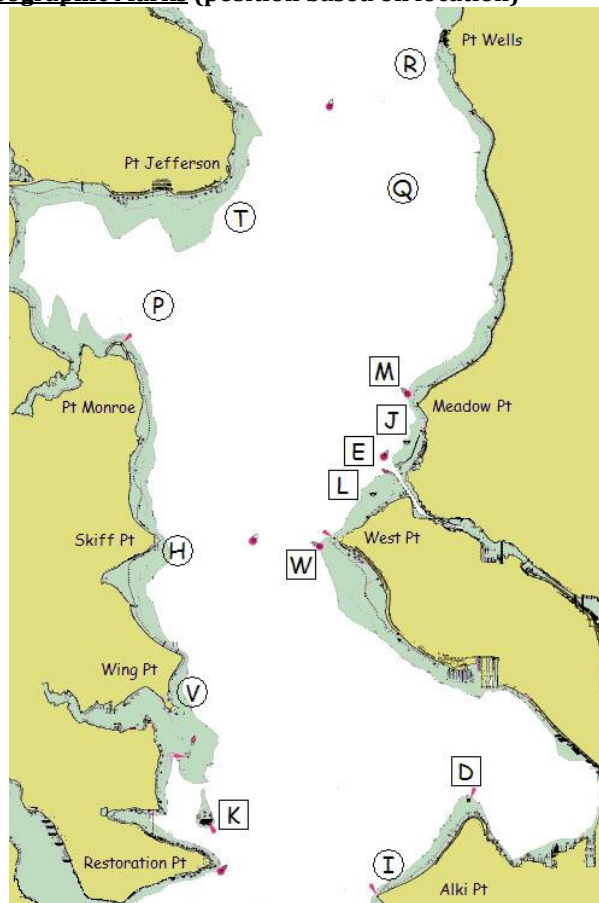
G (Green)



Y (Yellow)

Z (Green)

Geographic Marks (position based on location)



Bearings are magnetic. Distances are nautical miles (NM). Bearings, distances, and positions are approximate. Each temporary mark is shown with its label in a circle. Each permanent mark is near its label in a square box.

The course diagram for buoy course marks shows the general orientation of the race committee signal boat ("RC"), other marks (identified by the letters S, A, B, G, X, Y, Z and F), and the intended wind direction. All marks other than the race committee signal boat are inflatable buoys. Positions are approximate and the diagram is not to scale.

Note:

S When "S" is a starting mark for a downwind start, it may be on either side of the race committee signal boat.

- D Duwamish Head Lt. (LL #16910)
- H Temporary mark 0.3 NM E of Skiff Pt.
- I Temporary mark 0.5 NM N of Alki Pt.
- J Shilshole Bay N Mooring Buoy 0.25 NM SSW of N entrance
- K Blakely Rock (LL #16830)
- L Shilshole Bay S Mooring Buoy 0.5 NM SW of S entrance
- M Meadow Pt. Buoy (LL #16765)
- P Temporary mark 0.75 NM NNE of Pt. Monroe
- Q Temporary mark 3.0 NM bearing 340° from Meadow Pt. Buoy
- R Temporary mark 0.5 NM SW of Pt. Wells
- T Temporary mark 0.5 NM SE of Pt. Jefferson
- V Temporary mark 0.3 NM NNE of Wing Pt.
- W West Pt. Buoy (LL #16805)