

Table of Contents



Declaration of Independence – SYC 2005 Sailboat of the Year
Photo copyright 2005 by Sean Trew

Seattle Yacht Club Sailboat Race Book 2006

1807 East Hamlin Street
Seattle, Washington 98112
Phone 206.325.1000

Sail Office: 206.328.7009
Fax: 206.324.8784
website: www.seattleyachtclub.org
email: sycsail@seattleyachtclub.org

- [Greetings from the Fleet Captain Sail](#) 1
- [Sailboat Activity Calendar](#) 2
- [Race Registration Procedure](#) 3
- [Registration Checklist](#) 4
- [SYC General Notice of Race](#) 5
- [SYC Sailboat Racing Program](#) 7
 - [Overview of Sailboat Racing Events](#) 8
 - [Notice of Race: SYC Smith Island / Double Bluff Race](#) 10
 - [Notice of Race: SYC Jack & Jill Race](#) 11
 - [Notice of Race: SYC Mark Mayer Regatta](#) 12
 - [Notice of Race: SYC S.O.C.K.S. Regatta](#) 13
 - [Notice of Race: SYC Vashon Island / Point Robinson Race](#) 14
 - [Notice of Race: Anthony's / SYC Kirkland Friday Night Series](#) 15
 - [Notice of Race: SYC Blake Island Race](#) 16
 - [Notice of Race: SYC Star & Bar Regatta](#) 17
 - [Notice of Race: SYC Grand Prix Invitational Regatta](#) 18
 - [Deception Twelve Class Fleet](#) 20
- [SYC Sailboat Cruising Program](#) 21
 - [Overview of Sailboat Cruising Events](#) 22
 - [Winter and Early Spring Mini-Cruises](#) 23
 - [Leukemia Cup](#) 24
 - [Notice of Race: Cruise & Snooze Series \(to Port Madison\)](#) 25
 - [NORPAC Regatta / Clayoquot Sound Cruise](#) 26
 - [Notice of Race: Gig Harbor Regatta](#) 27
- [SYC Junior Sailing Program](#) 28
 - [2006 Northwest Youth Race Circuit](#) 29
 - [SYC Summer Sailing School](#) 30
- [Awards and Recognition for 2005](#) 31
 - [2005 SYC Sailing Program Leadership Team](#) 32
 - [Junior Sailing Awards & Trophies 2005](#) 33
 - [Senior Sailing Awards & Trophies 2005](#) 34
 - [Grand Prix Regatta Awards](#) 37
- [Appendix](#) 39
 - [SYC Sailboat Program Officials](#) 40
 - [2006 Sailboat Committee](#) 40
 - [2006 Race Committee](#) 41
 - [2006 Judges](#) 41
 - [Puget Sound Sailboat Safety Regulations](#) 42
 - [Puget Sound Course Mark Descriptions](#) 43
 - [Puget Sound Marks Illustration](#) 44
 - [Lake Washington Marks Illustration](#) 45

Many thanks to Sean Trew for providing a number of the photos in this book. Sean's work can be seen at <http://www.pacificfog.net> . Thanks also to Paul Walchenbach and Michael Cenname for contributing several photos.

Greetings from the Fleet Captain Sail

Welcome to SYC Sailing Activities for 2006. Whether your interests lean toward cruising or racing, or both, there is a broad spectrum of events that you may enjoy. The cruising events will be under the leadership of Chris Warner, Cruising Activities Chairman. Cruising events will start in January with the first mini-cruise to Port Madison. There are five such cruises (no racing) for those who simply like to be on the water with friends. However, if you prefer your boating after the weather gets a warmer, you will not want to miss the weekend Cruise and Snoozes and the Port Ludlow Overnight. For extended cruising and adventure, NORPAC and the new Clayoquot Sound Cruise will show you some great sights on the west coast of Vancouver Island.

Sailboat Dinners are scheduled for the second Thursday every second month. They feature speakers and topics of interest to sailors; this is a great place to meet other SYC sailors too.

Brian Watkins returns as Racing Activities Chairman for 2006. Distance racers will want to participate in the Tri-Island/Tri-Point Series, and buoy racers will want to put both the SOCKS and the Star & Bar Regattas on their calendars. For a great way to end the week, try the Kirkland Friday Night Series. Remember, too, that the Mini-12 Fleet is now 20 boats strong and races on Sundays in the winter and evenings in the summer.

2006 is the third year that SYC offers a gentler form of racing for the Cruiser/Racer Class. The C/RC will appeal to owners of family-oriented boats that are not competitive for current PHRF racing, but whose owners and crews would like to test their skills with other similar, displacement-oriented boats (lightweight "hotrods" need not apply). Cruising class handicaps will include adjustments in many areas, e.g. less-than-optimal sails, roller furling equipment, bottom condition, etc., and the experience of the skipper; starts will be provided for this class in the Tri-Point Series, Mark Mayer, and Port Ludlow races.

In 2006 the Sailboat Committee will be working hard on Race Committee issues. We will be working with other clubs in an effort to educate Race Committee members and interested sailors in some of the finer points of race administration. Through the efforts of a new Race Administration committee at PIYA, we will be certifying our member's knowledge of race administration and judging. If you have ever wondered about what goes on the upper deck of the Portage Bay, please join us.

The Sailboat Committee Meetings are at 7 P.M. on the first Thursday of each month (excepting May). Whatever your interest in sailing, we want you to come and join in. When you get involved, you will have more fun.

Bruce Campbell
Fleet Captain, Sail

Sailboat Activity Calendar

January

5 Sailboat Committee Mtg.
12 Sailboat Dinner
28-29 Eagle Harbor Mini-Cruise

February

2 Sailboat Committee Mtg.
9 Sailboat Dinner
25 Safety at Sea Seminar

March

2 Sailboat Committee Mtg.
18-19 Gig Harbor Mini-Cruise

April

6 Sailboat Committee Mtg.
13 Sailboat Dinner
22 Smith Island/Double Bluff
(Tri-Island/Tri-Point Race #1)
29 SYC Jack and Jill Race
29-30 Port Ludlow Mini-Cruise

May

4 Sailboat Committee Mtg.
5 Mark Mayer Race (Friday)
6 Opening Day
11 Sailboat Committee Mtg.
13-14 SOCKS Regatta
20 Vashon Island / Pt. Robinson
(Tri-Island/Tri-Point Race #2)
20-21 Poulsbo Viking Fest
Mini-Cruise

June

1 Sailboat Committee Mtg.
2 Anthony's/SYC Race Series
Begins (Friday nights through
8/25; no race June 30)
3 Leukemia Cup
8 Sailboat Dinner
10 Blake Island
(Tri-Island/Tri-Point Race #3)
24-25 Cruise 'n Snooze

July

6 (No Sailboat meeting)
22-28 NORPAC
7/31-8/5 Clayoquot Sound Cruise

August

3 (No Sailboat meeting)
12-13 McCurdy Cup
25 Last Anthony's/SYC race
26-27 NW Junior Olympics

September

7 Sailboat Committee Mtg.
9-10 Cruise 'n Snooze
14 Sailboat Dinner
16-17 Star & Bar Regatta
23-24 Port Ludlow Cruise/Race

October

5 Sailboat Committee Mtg.
6 SYC Annual Meeting
7 Barnacle Bill Race
28-29 Seattle Big Boat Series
TBD International Mini-12 Team
Race Regatta

November

2 Sailboat Committee Mtg.
3-5 Grand Prix Invitational Regatta
5 Grand Prix Awards Dinner
9 Sailboat Dinner
20 Sailboat Awards Banquet

December

7 Sailboat Committee Mtg.

Race Registration Procedure

Entry Forms

Race entry forms are available at the SYC Portage Bay Club House front desk. Please return your completed form with entry fees to the attention of the Sailing Office at the Seattle Yacht Club.

Online Registration

Online race registration is available at the SYC race registration website. You can click on the link from the front page of the SYC website (www.seattleyachtclub.org) or go directly to the registration site at <http://www.seattleyachtclub.org/registersail>. The site is secure for credit card transactions.

Deadlines

Registrations must be submitted online or received by the Seattle Yacht Club at the main clubhouse by close of business (normally 1730 hours) on the entry deadline for each race. The deadline is typically the Tuesday preceding the race unless otherwise indicated in the Notice of Race. Registrations received after the deadline will be assessed a \$20 late fee.

Cancellations

To withdraw, please call the SYC Sailing Director. See below for contact information.

Season Fee Package

A season fee of \$195 is available for SYC Jack & Jill, Tri-Island/Tri-Point Series, Mark Mayer, and Star & Bar. The deadline for getting a season fee is the deadline for the first race included in the package. Contact the SYC Sailing Director to receive your individual pass code with which to register for each race online. REGISTRATION FOR EACH RACE IS STILL REQUIRED. Race registration deadlines and late fees apply.

Contact

For questions, comments, season packages, or cancellations, please call or e-mail the SYC Sailing Director, Brian Ledbetter, in the SYC Sailing Office. Phone: 206.328.7009. Fax: 206.324.8784. E-mail: brianl@seattleyachtclub.org

Registration Checklist

Date	Event	Cruiser/ Racer	Fee	Deadline	Enter
April 22	Tri-Island #1: Smith Island / Double Bluff	Yes	\$45 ^{1,2}	April 18	<input type="checkbox"/>
April 29	SYC Jack and Jill	No	\$30 ¹	April 25	<input type="checkbox"/>
May 5	Mark Mayer	Yes	no fee	none	<input type="checkbox"/>
May 13-14	S.O.C.K.S. Junior Single-handed Single-handed Double-handed Keelboat	No	\$25 \$35 \$45 \$55	May 9	<input type="checkbox"/>
May 20	Tri-Island #2: Vashon Island / Point Robinson	Yes	\$45 ^{1,2}	May 16	<input type="checkbox"/>
June 2 – Aug. 25	Anthony's / SYC Kirkland Friday Night Series	No	\$60	May 30	<input type="checkbox"/>
June 3	Leukemia Cup	Yes	\$100	None	<input type="checkbox"/>
June 10	Tri-Island #3: Blake Island	Yes	\$45 ^{1,2}	June 6	<input type="checkbox"/>
June 24-25	Cruise & Snooze A/B	Yes	\$40	June 20	<input type="checkbox"/>
July 22-28	NORPAC	Yes	TBD	July 18	<input type="checkbox"/>
July 31- Aug. 5	Clayoquot Sound Cruise	Yes	TBD	July 18	<input type="checkbox"/>
Sept. 9-10	Cruise & Snooze C/D	Yes	\$40	Sept. 5	<input type="checkbox"/>
Sept. 16-17	Star & Bar	No	\$75 ¹	Sept. 12	<input type="checkbox"/>
Sept. 23-24	Gig Harbor Regatta	Yes	\$40	Sept. 19	<input type="checkbox"/>
Nov. 3-5	Grand Prix Invitational Boats under 30' 30' to 39' 40' and over	No	\$125 \$150 \$175	Oct. 31	<input type="checkbox"/>

¹A season fee for SYC Jack & Jill, the Tri-Island/Tri-Point Series, Mark Mayer, and Star & Bar is available for \$160.

²Tri-Island / Tri-Point Series registration is available for \$100. Cruiser/Racer Class registration is \$30 for each race or \$60 for the series.

SYC General Notice of Race

A Notice of Race may be amended by the SYC General Notice of Race. To the extent the SYC General Notice of Race conflicts with a Notice of Race, the Notice of Race takes precedence.

1 Racing Rules

The races will be governed by the “rules” as defined in the Racing Rules of Sailing (“RRS”).

2 Alterations of Racing Rules

- 2.1 RRS 51 “Moving Ballast” is amended by adding: “A boat rated by PHRF Northwest in consideration of water ballast will be allowed to use water ballast as rated.”
- 2.2 RRS 64 “Penalties and Exoneration” is amended by adding: “For a violation of PIYA Safety Requirements, the protest committee may impose a penalty less than disqualification.”
- 2.3 RRS 31.2 is amended by adding: “Boats which cause damage to the race committee boat while on station shall be subject to protest by the race committee and shall be liable for any damages.”

3 Eligibility and Entry

- 3.1 To enter an event, entrants must register by entry form or online and pay appropriate fees by the registration deadline. Registration after the deadline may be accepted at the discretion of the race organizers and may require an additional late fee.
- 3.2 All boat owners racing under PHRF Northwest classes must belong to PHRF Northwest and have current and valid rating certificates. It is the responsibility of the entrants to ensure that the correct rating for their boat is listed in the PHRF Northwest roster or supplement by 1200 hours on the Tuesday preceding a scheduled race. Boats racing without a PHRF certificate will not be scored. No entry fees will be refunded.

4 Safety and Responsibility

- 4.1 Occasionally sailboat racing has resulted in injury or loss of life. All competitors in SYC events participate at their own risk. It is the responsibility of each skipper to inform their crew of the risks of sailboat racing, to make sure they understand and accept those risks, to decide whether their crew is competent and adequate for the event, and to decide whether to start or continue in a race.
- 4.2 It is recommended that all competitors wear PFD’s while on the water.
- 4.3 Boats must comply with the current Pacific Internal Yachting Association (PIYA) Category standards specified in the Notice of Race as defined in the PIYA Special Regulations Governing Minimum Equipment and Accommodation Standards. A list of these requirements is available from SYC, other PIYA member yacht clubs, and the PIYA web site at <http://www.ussailing.net/piya>

4.4 The Race Committee may direct any boat to proceed to a location for inspection of compliance with required standards. Inspection results will be reported to the race committee. Boats not in compliance with the requirements shall be subject to protest by the race committee.

4.5 Boats must be operated in accordance with the Puget Sound Sailboat Safety Regulations, as available in the SYC Race Book.

4.6 Boats must be operated in accordance with the current USCG Traffic Separation Scheme Regulations. Boats may be required to monitor VHF.

5 Time

- 5.1 The official race time shall be the local time, either Pacific Standard Time or Pacific Daylight Time. In case of disagreement, the race committee clock shall govern.
- 5.2 Time limits indicated in the Notice of Race are the maximum allowable time from each boat’s starting signal to her finish time. Boats that do not finish within their time limit will be scored DNF.

6 Identification

A boat wishing to use sails with numbers different from her own must notify the SYC Sailing Director by the registration deadline or her time of registration, whichever is later.

7 Changes in Rating

A change in a boat’s rating will take effect on the day it is recorded by the rating agency. Changes are not retroactive. When a boat’s rating changes between races that are part of a series, the boat shall remain in the same class in which she started the series for the remaining races in the series.

8 Scoring

- 8.1 Races will be scored using RRS Appendix A4 Low Point System.
- 8.2 A boat’s score in a series shall be the total of her race scores, except that a boat’s worst score will be excluded if seven or more races are completed in the series. This amends RRS Appendix A2.
- 8.3 A boat that did not start (DNC, DNS, OCS), did not finish (DNF), retired after finishing (RAF), or is disqualified (DSQ, DNE, DGM, BFD) will be scored the number of finishers plus one. This amends RRS Appendix A4.2 and A9.

9 Sailing Instructions

Sailing Instructions will be available by the Thursday before the race on the SYC web site at <http://www.seattleyachtclub.org> or, if not available on the web site, on the notice board at the SYC Portage Bay clubhouse lower entrance.

SYC Sailboat Racing Program

With events ranging from one-design championships, to the mid-distance Tri-Point Series, and longer-distance Tri-Island races, Seattle Yacht Club actively promotes racing here in the great Northwest. In this section:

- Overview of Sailboat Racing Events
- SYC Smith Island / Double Bluff Race
- SYC Jack & Jill Race
- SYC Mark Mayer Regatta
- SYC S.O.C.K.S. Regatta
- SYC Vashon Island / Point Robinson Race
- Anthony's / SYC Kirkland Friday Night Series
- SYC Blake Island Race
- SYC Star & Bar Regatta
- SYC Grand Prix Invitational Regatta
- Deception Twelve Class Fleet



Puttanesca and Goose & Duck in tight competition at Grand Prix
Photo copyright 2005 by Sean Trew

Overview of Sailboat Racing Events

Tri-Island / Tri-Point Series

The SYC Tri-Island / Tri-Point series continues the tradition of offering longer courses to test your stamina and strategic knowledge of Puget Sound. Winning a Tri-Island, or the shorter Tri-Point race, will place your yacht's name on one of the most prestigious trophies in the club. At the end of the series, the club will open its doors to all those who have participated for an awards party. A Cruiser/Racer Class and course will be offered for each race.

Smith Island / Double Bluff

The Smith Island course provides our longest race for the year, with several challenging decision points on the course and the opportunity to experience more wind, waves, and current than normal. The Double Bluff course now offers a new destination with new challenges and opportunities. Start off from Shilshole, head north toward Admiralty Inlet, round your mark, and finish back at Shilshole.

Vashon Island / Point Robinson

The Vashon Island course is one of the most popular races with several distinct racing phases. Get ahead and go for a breakaway, or if not so fortunate, hope to bring the wind to your competitors waiting at the next corner. The Point Robinson course now lets you go a little farther than in previous years and face your decisions from a slightly different angle. These tactical courses will take you south with scenic views of Elliott Bay and Mt. Rainier.

Blake Island

The third race in the series takes the Tri-Island and Tri-Point racers around Blake Island. Whether you're testing your mettle or rolling the dice, you select which way to round the island.

Jack and Jill

The SYC Jack and Jill race is the lead-off event for the five-race Puget Sound Jack & Jill Series. Each event is sponsored by a different yacht club. Competing in three or more of the races qualifies you for the series overall. The overall award is presented at the SYC awards banquet at the end of the season.

Mark Mayer Regatta

The Mark Mayer Race begins the Opening Day weekend on Friday evening. The course is just north of the Evergreen Point Bridge on Lake Washington. A post-race party will be held at the SYC clubhouse.

SOCKS One-Design Regatta

The Seattle One-Design, Centerboard, and Keelboat Regatta celebrates tight buoy racing. May is a great month for sailing on Puget Sound with sunshine and consistent wind. Make sure your one-design class is signed up early! Each night will feature a post-race party.

Anthony's / SYC Kirkland Friday Night Series

SYC and co-sponsor Anthony's Homeport host Friday evening racing. This fun series, which begins in June and runs through August, rewards consistency and participation. Sailboats of all types and performance are encouraged. Several PHRF classes and one multi-hull class compete on an around-the-buoy course. First start is 7:00 pm at a starting line off Kirkland. Awards presentations follow at Anthony's.

Star & Bar Regatta

This two-day regatta tests around-the-buoy racing skills, with September providing a good chance for dependable wind and warm weather on the last weekend of the summer. Classes for both one-design and PHRF will be available. Post-race parties at Shilshole follow both days of racing.

Grand Prix Invitational

The season's racing activities culminate with the 29th Annual Grand Prix Invitational Regatta. Boats must qualify for this prestigious invitation-only event. Qualification criteria can be found in the Notice of Race. You have several chances to qualify, so get out there and give it a shot. The Grand Prix puts a premium on all aspects of racing by featuring both buoy and distance racing over a three-day period with parties every evening. What a great way to wrap up the racing season!



Coruba, Voodoo Child, Irene, and Flash in the Big Boat Series
Photo copyright 2005 by Sean Trew

Notice of Race SYC Smith Island / Double Bluff Race

Date: April 22, 2006 (Saturday)

Location: Northern Puget Sound, Admiralty Inlet, and Straits of Juan de Fuca

Course: The start and finish will be in Shilshole Bay in the area between Meadow Point and the Shilshole Bay Approach Buoy.

- Smith Island course: Start by leaving the start mark to port, round Minor Island to port, round Smith Island to port, and finish leaving the finish mark to port.
- Double Bluff course: Start by leaving the start mark to port, round the buoy off Double Bluff to port, and finish by leaving the finish mark to port.
- Cruiser/Racer Class course: Start by leaving the start mark to port, round temporary mark "R" off Point Wells to port, round temporary mark "T" off Point Jefferson to port, and finish leaving the finish mark to port.

Time of First Warning: 0900 hours

Time Limits:

- Smith Island course: 30 hours
- Double Bluff course: 12 hours
- Cruiser/Racer Class course: 6 hours

Classes to Race: PHRF-NW classes, including a Cruiser/Racer Class.

Safety Requirement:

- Smith Island course: PIYA Category II
- Double Bluff course: PIYA Category III
- Cruiser/Racer Class course: PIYA Category III

Other Provisions:

- Notice of Race amended by the SYC General Notice of Race.
- Boats on the Smith Island course may be required to take their rounding time at the Minor Island light. This time may be used to score boats that do not finish the entire course behind any boats that do finish the entire course.
- This race is part of the SYC Tri-Island Series.

Awards: 1st place overall on each course. For the SYC Tri-Island Series, 1st, 2nd, and 3rd overall per course and 1st in class. Awards will be presented at the awards party, noted below.

Social Activities: The Tri-Island/Tri-Point and Cruiser/Racer Class Series awards party will be held at the SYC Portage Bay clubhouse on Saturday, June 10, at 1900 hours.

Registration Deadline: April 18, 2006 (Tuesday)

Registration Fee:

- \$45 (or \$100 for SYC Tri-Island / Tri-Point Series)
- Cruiser/Racer Class entry \$30 (or \$60 for the series)

Event Chairpersons:

- Phil Calvert, 206-910-7977, phil.calvert@comcast.net
- Mike Milburn, 206-780-2525, sycfcs04@msn.com

Notice of Race SYC Jack & Jill Race

Date: April 29, 2006 (Saturday)

Location: Puget Sound in the vicinity of Shilshole Bay

Course: The start and finish will be in Shilshole Bay. The course will be posted on the committee boat.

Skipper's Meeting: 1030 hours at CYC Shilshole clubhouse

Time of First Warning: 1200 hours

Time Limit: The time limit will be defined in the Sailing Instructions and will not exceed 6 hours.

Classes to Race: PHRF-NW classes. There will be a flying sails class and a non-flying sails class. You may decide your class at the skippers meeting. This allows you to decide whether you would like to fly your spinnaker depending on the wind strength the day of the race. Final class breaks will be determined at the skippers meeting.

Safety Requirement: PIYA Category III

Other Provisions:

- Notice of Race amended by the SYC General Notice of Race.
- Two crew, one male and one female, are required. Children 10 or under are allowed on board, but may not help.
- No auto pilots or wind vanes are allowed.
- All crew must wear a USCG certified personal flotation device while racing.

Awards: 1st, 2nd, and 3rd place in class

Social Activities: All competitors are invited to attend the awards presentation at the SYC Port Madison Outstation after racing.

Registration Deadline: April 25, 2006 (Tuesday)

Registration Fee: \$30

Event Chairperson: Brian Watkins, 206-276-1445, brianw@avanade.com

Notice of Race SYC Mark Mayer Regatta

Date: May 5, 2006 (Friday)

Location: Lake Washington in the vicinity of Sand Point

Course: One buoy race will be sailed. The start and finish will be in the area between Webster Point, Hunts Point, and Sand Point. The course will be posted on the committee boat.

Time of First Warning: 1900 hours

Time Limit: 2 hours

Classes to Race: Racer or Cruiser/Racer Class (self-declared)

Safety Requirement: Coast Guard requirements

Other Provisions: Notice of Race amended by the SYC General Notice of Race.

Awards: 1st, 2nd, and 3rd place in class

Social Activities: Party on Dock 0 following return to dock.

Registration Deadline: None

Registration Fee: Free

Event Chairperson: Dan Krier, 206-323-2405, dan@marinesc.com



Heavy traffic with Tantivy, Shoot the Moon, and Voodoo Child
Photo by Paul Walchenbach

Notice of Race SYC S.O.C.K.S. Regatta

(Seattle One-Design, Centerboard, and Keelboat Series)

Dates: May 13-14, 2006 (Saturday and Sunday)

Location: Puget Sound in the vicinity of Shilshole Bay

Course: Multiple buoy races may be sailed each day. The courses will be as designated in the Sailing Instructions.

Skipper's Meeting: 0930 hours at CYC Shilshole clubhouse (Saturday only).

Time of First Warning:

- Saturday: 1100 hours
- Sunday: 1030 hours

Time Limit: The time limit will be defined in the Sailing Instructions and will not exceed 2 hours per race.

Classes to Race: One design classes, as follows:

- Keelboat classes may include Melges 24, J-24, J-22, Thunderbird, Star, Santana 20, Olson 30, Hobie 33, Etchells, San Juan 24, and other keelboat classes 36 feet and under with a minimum of 7 boats registered.
- Centerboard classes may include Tasar, Laser, Laser Radial, International 14, 49er, Lido, Thistle, Europe Dinghy, Finn, Byte, and other centerboard classes with a minimum of 5 boats registered.

Safety Requirement: One-design class rules and US Coast Guard regulations.

Other Provisions: Notice of Race amended by the SYC General Notice of Race.

Awards: 1st, 2nd, and 3rd place in class

Social Activities: On Saturday evening there will be a party at the CYC Shilshole clubhouse. On Sunday evening there will be awards and festivities at the CYC Shilshole clubhouse.

Registration Deadline: May 9, 2006 (Tuesday)

Registration Fee:

- Junior single-handed (age < 18): \$25
- Single-handed: \$35
- Double-handed: \$45
- Keelboat: \$55

Event Chairperson: Brian Watkins, 206-276-1445, brianw@avanade.com

Notice of Race SYC Vashon Island / Point Robinson Race

Date: May 20, 2006 (Saturday)

Location: Puget Sound

Course: The start and finish will be in Shilshole Bay in the area between Meadow Point and the Shilshole Bay Approach Buoy.

- Vashon Island course: Start by leaving the start mark to port, round Maury Island to starboard, round Vashon Island to starboard, and finish leaving the finish mark to port.
- Point Robinson course: Start by leaving the start mark to port, round a temporary buoy immediately north of Point Robinson at approximately 47° 24.0' N, 122° 23.0 W, and finish by leaving the finish mark to port.
- Cruiser/Racer Class course: Start by leaving the start mark to port, round Blakely Rocks ("K") to port, round the Duwamish Head Light ("D") to port, and finish by leaving the finish mark to port.

Time of First Warning: 0900 hours

Time Limit:

- Vashon Island course: 19 hours
- Point Robinson course: 12 hours
- Cruiser/Racer Class course: 6 hours

Classes to Race: PHRF-NW classes, including a Cruiser/Racer Class.

Safety Requirements:

- Vashon Island courses: PIYA Category II
- Point Robinson course: PIYA Category III
- Cruiser/Racer Class course: PIYA Category III

Other Provisions:

- Notice of Race amended by the SYC General Notice of Race.
- This race is part of the SYC Tri-Island Series.

Awards: 1st place overall on each course. For the SYC Tri-Island Series, 1st, 2nd, and 3rd overall per course and 1st in class. Awards will be presented at the awards party, noted below.

Social Activities: The Tri-Island/Tri-Point and Cruiser/Racer Class Series awards party will be held at the SYC Portage Bay clubhouse on Saturday, June 10, at 1900 hours.

Registration Deadline: May 16, 2006 (Tuesday)

Registration Fee:

- \$45 (or \$100 for SYC Tri-Island and Tri-Point Series)
- Cruiser/Racer Class Entry \$30 (or \$60 for the series)

Event Chairpersons:

- Phil Calvert, 206-910-7977, phil.calvert@comcast.net
- Mike Milburn, 206-780-2525, sycfcs04@msn.com

Notice of Race Anthony's / SYC Kirkland Friday Night Series

Dates: June 2, 2006, through August 25, 2006 (Friday evenings). No race June 30.

Location: Lake Washington in the vicinity of Moss Bay

Course: The start and finish will be off the Kirkland waterfront. The course will be as designated in the Sailing Instructions.

Time of First Warning: 1855 hours each day

Time Limit: 2 hours for each race

Classes to Race: PHRF-NW classes

Safety Requirement: US Coast Guard regulations.

Other Provisions:

- Notice of Race amended by the SYC General Notice of Race.
- RRS 60.1 "Right to protest and request redress" will be deleted. Boats that may have broken a rule in RRS Part 2 are still required to comply with RRS 44.1 "Taking a Penalty" and 44.2 "Two-Turns Penalty."
- Series scoring will use a high point system.
- Registration will be available through Anthony's Kirkland location. There is no additional fee for late registration.

Awards: Please join us in the Kirkland Anthony's lounge following each night's race for a video and awards ceremony.

Registration Deadline: May 30, 2006 (Tuesday)

Registration Fee: \$60

Event Chairpersons:

- Jill Hendrick, 206-948-5455, jillhendrick@hotmail.com
- Chris Hofius, 206-817-8006, sunsailor21@hotmail.com

Notice of Race SYC Blake Island Race

Date: June 10, 2006 (Saturday)

Location: Puget Sound

Course: The start and finish will be in Shilshole Bay in the area between Meadow Point and the Shilshole Bay Approach Buoy.

- The Blake Island course is as follows: start by leaving the start mark to port, round Blake Island to port or starboard, and finish leaving the finish mark to port.
- The Cruiser/Racer Class course is as follows: start by leaving the start mark to port, round Blakely Rocks ("K") to port, and finish leaving the finish mark to port.

Time of First Warning: 0900 hours

Time Limits:

- Blake Island course: 9 hours
- Cruiser/Racer Class course: 6 hours

Classes to Race: PHRF-NW classes, including Cruiser/Racer Class.

Safety Requirement: PIYA Category III

Other Provisions:

- Notice of Race amended by the SYC General Notice of Race.
- This race is part of the SYC Tri-Island Series.

Awards: 1st place overall on each course. For the SYC Tri-Island Series, 1st, 2nd, and 3rd overall per course and 1st in class. Awards will be presented at the awards party, noted below.

Social Activities: The Tri-Island/Tri-Point and Cruiser/Racer Class Series awards party will be held at the SYC Portage Bay clubhouse on Saturday, June 10, at 1900 hours.

Registration Deadline: June 6, 2006 (Tuesday)

Registration Fee:

- \$45 (or \$100 for SYC Tri-Island / Tri-Point Series)
- Cruiser/Racer Class Entry \$30 (or \$60 for the series)

Event Chairpersons:

- Phil Calvert, 206-910-7977, phil.calvert@comcast.net
- Mike Milburn, 206-780-2525, sycfcs04@msn.com

Notice of Race SYC Star & Bar Regatta

Date: September 16-17, 2006 (Saturday and Sunday)

Location: Puget Sound in the vicinity of Shilshole Bay

Course: Up to four buoy races may be sailed each day. The courses will be as designated in the Sailing Instructions.

Time of First Warning: 1000 hours each day

Time Limit: The time limit will be defined in the Sailing Instructions and will not exceed 2 hours per race.

Classes to Race: PHRF-NW and one design classes.

Safety Requirement: PIYA Category III or applicable one design rules and US Coast Guard regulations.

Other Provisions: Notice of Race amended by the SYC General Notice of Race.

Awards: 1st, 2nd, and 3rd place in class

Social Activities: Parties after each day of racing at CYC Shilshole clubhouse.

Registration Deadline: September 12, 2006 (Tuesday)

Registration Fee: \$75

Event Chairperson: Brian Watkins, 206-276-1445, brianw@avanade.com



The crew of Judo Chop showing their form on the rail
Photo copyright 2005 by Sean Trew

Notice of Race SYC Grand Prix Invitational Regatta

Dates: November 3-5, 2006 (Friday, Saturday, and Sunday)

Location: Puget Sound

Course: One or more buoy or mid-distance races may be sailed each day. The courses will be as designated in the Sailing Instructions.

Time of First Warning:

- Friday: 1330 hours
- Saturday and Sunday: 1000 hours

Time Limit: The time limit will be defined in the Sailing Instructions and will not exceed 8 hours per race.

Classes to Race: PHRF-NW classes

Safety Requirement: PIYA Category III

Other Provisions:

- Notice of Race amended by the SYC General Notice of Race.
- Only boats that qualify and are invited, at the discretion of the event chairpersons, will be eligible to register and compete. Boats may qualify based on their performance in selected races in the prior year. For more information, see the Qualifying Events section, below. Boats may also qualify at the discretion of the event chairpersons.
- Permanent trophy recognition will be awarded for accomplishments in each class, instead of classes and divisions.
- The race committee will have on-the-water discretion to run one or more races each day according to conditions.

Awards: 1st, 2nd, and 3rd place in class

Social Activities: There will be parties after racing on Friday and Saturday at the CYC Shilshole clubhouse. The awards party will be after racing on Sunday at the SYC Portage Bay clubhouse.

Registration Deadline: October 31, 2006 (Tuesday)

Registration Fee:

- Less than 30': \$125
- 30' to 39': \$150
- 40' and over: \$175

Event Chairperson: Roger Pawley, 425-827-3965, sailrap@msn.com

Qualifying Events:

Seattle Yacht Club Events (1st, 2nd or 3rd in class)

- SYC Smith Island/Double Bluff
- SYC Blake Island
- SYC Vashon Island/Point Robinson
- SYC SOCKS Regatta (Keelboats)
- SYC Jack & Jill
- SYC Star & Bar Regatta
- SYC Grand Prix (prior year)

Other PIYA Events (1st, 2nd, and 3rd in class)

- SSSS South Sound Series
- CYC Center Sound Series
- WVYC Southern Straits
- RVYC Swiftsure
 - Swiftsure Lightship Classic
 - Cape Flattery
 - Unlimited Flattery
 - Juan de Fuca
 - Unlimited Juan de Fuca
- Whidbey Island Race Week
- Van Isle 360 / SIN

Other PIYA Events (1st in class)

- TYC Vashon Island
- DYC Duwamish Head
- OYC Toliva Shoal
- GHYC Islands Race
- STYC Blakely Rock Benefit Race
- CYC Blakely Rock
- CYC Possession Point
- CYC Pully Point
- CYC PSSR
- SNSYC RIPS Canadian Race Week
- CYC PSSC
- CYCE Foul Weather Bluff
- OIYC Round the County
- RVYC Thrash Regatta
- SBYC Trans-Puget
- AYC Windermere Cup
- BYC PITCH
- VARC Opener Regatta
- VARC Closer Regatta (prior year)

Deception Twelve Class Fleet

SYC Deception Class 2006 Race Calendar

Event	Time	Date
Winter Series 1 - 6	Sundays at 1:00	1/8 - 2/12
Optional team/match race	Sundays at 1:00	2/19, 2/26
Early Spring Series 1 – 6	Sundays at 1:00	3/5 – 4/9
Spring Evening Series 1 - 3	Tuesdays at 6:00	4/11 – 4/25
Regatta Team Practice	Sunday at 2:00	4/30
Regatta Team Practice	Tuesday at 6:00	5/2
Opening Day Canadian Exchange Regatta	Thursday at 2:00	5/4
Spring Evening Series 4 - 6	Tuesdays at 6:00	5/9 - 5/23
Summer Evening Series 1 - 6	Tuesdays at 6:00	6/6 - 7/18
Fall Evening Series 1 - 3	Tuesdays at 5:00	9/26
International Team practice	Tuesday at 5:00	10/9, 10/16
International Team Regatta at SYC	Saturday & Sunday 10:00 – 4:00	9/30 - 10/1
Fall Evening Series 4 - 6	Tuesdays at 5:00	11/10 – 11/24

SYC Sailboat Cruising Program

Cruising events are for members of Seattle Yacht Club only, except as noted.

- Overview of Sailboat Cruising Events
- Winter and Early Spring Mini-Cruises
- Leukemia Cup
- Cruise & Snooze Series (to Port Madison)
- NORPAC Regatta / Clayoquot Sound Cruise
- Gig Harbor Regatta (open to all clubs)



Kilo and Time Bandit reaching across the Sound
Photo copyright 2005 by Sean Trew

Overview of Sailboat Cruising Events

Mini-Cruising Events

This is the fourth year for these “off season” weekend cruises. Get out on the water and enjoy nearby SYC outstations with your SYC friends.

January 28-29	Eagle Harbor
March 18-19	Gig Harbor
April 29-30	Port Ludlow
May 20-21	Poulsbo (Viking Fest)

Leukemia Cup

SYC is a proud sponsor of the annual Leukemia Cup Regatta and Poker Run to benefit the Leukemia and Lymphoma Society. Last year we had over 80 boats and raised over \$125,000 in the name of the Seattle area boating and sailing community. The auction party had over 300 attendees who enjoyed the food, the rum, the band, and the good deal on boating related auction items.

Cruise & Snooze Series

This event keeps growing every year. This time-honored cruising event is ideal for families. With a reverse start and non-flying sails, everyone is guaranteed to have a great time—the racing is optional. Come and enjoy the company of your SYC sailing friends at a casual event June 24/25 and September 9/10.

NORPAC Regatta / Clayoquot Sound Cruise

The biennial NORPAC cruise to Barkley Sound is scheduled for this summer. The cruise is limited to 30 boats and promises to keep the SYC tradition of fun cruising and casual sailboat racing in good standing. We have been invited back to visit the Port Alberni Yacht Club for our first night in Barkley for a proper kick-off green box. For 2006 we are also organizing a "follow-on" cruise to Clayoquot and Tofino, which is just a short hop further up the beach on the outside of Vancouver Island. Once you have cruised to Barkley it makes sense to stay another week and cruise Clayoquot, Flores Island, Hot Springs, and Tofino.

Sign up now at the SYC front desk; we are limited to the first 30 boats. The cruising will be fun and the racing is very casual.

Gig Harbor Regatta

Start off from Shilshole and race to Gig Harbor. Spend the night at Gig Harbor outstation and enjoy the party. Race back to Shilshole the next day. Racing and Cruiser/Racer Class starts will be provided.

SYC welcomes members of all yacht clubs to this event.

Winter and Early Spring Mini-Cruises

2006 will be the fifth year for this new series designed to get you and your family out on the water before the normal cruising season begins. Each cruise starts off at Shilshole on Saturday and goes to a nearby destination. After a greenbox at about 1730, the group will gather for a potluck about 1930 or hike to a nearby restaurant. Cruisers will want to be prepared to anchor out.

Registration Deadline: For information or to sign up, e-mail or phone Chris Warner by 1600 on the Friday before each cruise.

Chairpersons: Chris Warner and Pam Murray, 206-782-1277, panther@seanet.com

Dates	Destination	Meet off Shilshole	Greenbox	Dinner
January 28-29	Eagle Harbor	Saturday at 1300	1730	Burgers at the pub
March 18-19	Gig Harbor	Saturday at 1100	1730	Restaurant at 1930
April 29-30	Port Ludlow	Saturday at 1100	1730	Potluck or restaurant at 1930
May 20-21	Poulsbo (Viking Fest)	Saturday at 1000	1730	Meet at the Italian Place



Marda Gras sets the kite
Photo copyright 2005 by Sean Trew

Leukemia Cup

SYC is a proud sponsor of the annual Leukemia Cup Regatta and Poker Run to benefit the Leukemia and Lymphoma Society. Last year we had over 80 boats and raised over \$125,000 in the name of the Seattle area boating and sailing community. The auction party had over 300 attendees who enjoyed the food, the rum, the band, the poker, and the good deal on boating related auction items.

You can participate many ways, including just by registering and showing up for the regatta, poker run (for fast powerboats) and the huge party and auction after the on-the-water events. By participating you make the event bigger and more attractive to corporate sponsors and you also help us reach more potential fundraisers and donors. Please consider getting your boat off the dock and participating in this event.

Date: June 3, 2006 (Saturday)

Location and Schedule:

- Skipper's Meeting: SYC Elliott Bay Outstation (0900 – 1100)
- Regatta: Elliott Bay (1200)
- Party: Naval Amory Building on South Lake Union (1800)

Course: Two laps in Elliott Bay.

Classes to Race: Everyone is welcome to race or cruise.

Safety Requirement: US Coast Guard regulations

Registration Donation: \$100 to the Leukemia and Lymphoma Society

Registration: Please register with the Leukemia and Lymphoma Society by contacting Kirsten Juul-Music, Campaign Coordinator, at 206-957-4577 or email at juul-musick@lls.org, or register online at www.leukemicup.org/wa

Event Chairpersons:

Brian Watkins, 206-276-1445, brianw@avanade.com

Chris Warner, 206-783-5005, panther@seanet.com

Please contact Brian or Chris if you are interested in understanding more about this event and how to participate. We're looking for sailboats to enter in the regatta, fast powerboats to go in the poker run, other powerboats to host corporate sponsors, people to come to the party and auction, fundraisers to raise money and help secure auction items and corporate sponsors, and more volunteers to help out. Thank you!

Notice of Race Cruise & Snooze Series (to Port Madison)

This time-honored SYC cruising event is ideal for families. With a reverse start and no flying sails, everyone is guaranteed to have a great time. Racing is optional but part of the fun. There is a greenbox and potluck Saturday night and a catered breakfast on Sunday. The September C&S is held in conjunction with the Active-Intermediate Rendezvous. Please invite your A-I friends to participate.

Date:

- Races A/B (Saturday/Sunday): June 24-25, 2006
- Races C/D (Saturday/Sunday): September 9-10, 2006

Location: Puget Sound in the vicinity of Shilshole Bay

Course: For Saturday races, the start will be off the Shilshole south entrance. For Sunday races, the start will be off Point Monroe. The courses will be posted on the Race Committee boat. Mark locations can be found on the Puget Sound Course Map in the back of the SYC Race Book.

Time of First Warning:

- Races A and C (Saturdays): 1100 hours
- Races B and D (Sundays): 1200 hours

Time Limit: Time of day of 1700 hours each day

Classes to Race: PHRF-NW, including Cruiser/Racer Class.

Safety Requirement: PIYA Category III

Other Provisions:

- See SYC General Notice of Race.
- You do not need a PHRF-NW rating to race. Performance handicaps will be assigned for this event as necessary.
- No spinnakers or other flying sails may be used. Only one working sail may be flown on its stay at any time, except during sail changes.
- All races will be reverse start.
- SYC members only event.

Awards: Special awards will be made at the conclusion of each Saturday race. Recipients will be selected by the Race Committee. The Cruise & Snooze Cannon Trophy will be awarded to the series overall winner along with plaques for class.

Social Activities: A greenbox party will commence at 1700 on Saturday after racing. Dinner will follow at 1830. Main course is provided. When you sign up to attend, please let the front desk know whether you will bring a salad or a dessert for eight people. A breakfast will be served from 0830 to 1000 Sunday morning.

Registration Deadline:

- Races A/B: June 20, 2006 (Tuesday)
- Races C/D: September 5, 2006 (Tuesday)

Registration Fee: \$40 for A/B, \$40 for C/D. The fee provides for two adults per boat; a \$10 fee applies for each additional adult on board. No charge for children.

Event Chairpersons: Bill and Elizabeth Elmer, 206-527-2591, svanomaly@hotmail.com

NORPAC Regatta / Clayoquot Sound Cruise

The biennial NORPAC cruise to Barkley Sound is scheduled for this summer. The cruise is limited to 30 boats and promises to keep the SYC tradition of fun cruising and casual sailboat racing in good standing. We have been invited back to visit the Port Alberni Yacht Club for our first night in Barkley for a proper kick-off green box. The cruise itinerary is as follows:

- July 22nd - Gather in Sooke (optional)
- July 23rd - Green Box party at Port Alberni Yacht Club
- July 24th - Race #1 - casual & fun non-flying sail racing
- July 25th - Race #2
- July 26th - Lay day & traditional SYC Star Raft - pot luck dinner
- July 27th - Race #3
- July 28th - Race #4 & Awards Banquet at Tauca Lea Resort in Ucluelet

For 2006 we are also organizing an optional "follow-on" cruise to Clayoquot and Tofino, which is just a short hop further up the beach on the outside of Vancouver Island. Once you have cruised to Barkley it makes sense to stay another week and cruise Clayoquot, Flores Island, Hot Springs, and Tofino.

Dates:

- NORPAC Regatta: July 22 to July 28 (Saturday to Friday)
- Clayoquot Sound Cruise: July 31 to August 5 (Monday to Saturday)

Registration: For more information, please contact Steve Scruggs at 206-321-7496, stevenscruggs@msn.com

Chairperson: Steve Scruggs at 206-321-7496, stevenscruggs@msn.com

Notice of Race Gig Harbor Regatta

The SYC Gig Harbor Regatta features weekend racing to Gig Harbor and back and is open to sailors of all yacht clubs. A reverse start helps the slower boats arrive in Gig Harbor with plenty of time to enjoy the Saturday party and potluck. Cruising boats are encouraged to participate.

Dates: September 23-24, 2006 (Saturday and Sunday)

Location: Puget Sound

Courses: To be determined.

Time of First Warning: 0900 hours each day

Time Limit: 8 hours each day, or less if specified in Sailing Instructions

Classes to Race: PHRF-NW classes, including Cruiser/Racer Class.

Safety Requirement: PIYA Category III

Other Provisions:

- See SYC General Notice of Race.
- Slower-rated classes will start first.
- SYC welcomes members of all yacht clubs to this event.

Awards: Awards will be presented Saturday evening for that day's race. Awards for the regatta will be for 1st, 2nd, and 3rd in class.

Social Activities: There will be a party after the racing on Saturday at the SYC Gig Harbor outstation. Sailors should bring hors d'oeuvres or side dishes, yarns, stories, songs, or poems to share. A potluck dinner will follow at roughly 1800 hours. A barbecue is available.

Registration Deadline: September 19, 2006 (Tuesday)

Registration Fee: \$40 per boat.

Event Chairperson: Paul Walchenbach, 206-948-7095, pjwalch@sprynet.com

SYC Junior Sailing Program

The Junior Racing Team looks to continue its impressive accomplishments in 2006. With our previous year's team reaching national and in some cases world-level events, 2006's team looks to continue this level of achievement. The team has goals of placing members in the various US National Junior Championships, as well as in some cases pursuit of World events, and of course continued success in our regional competition, the Northwest Youth Racing Circuit. The team will continue to represent SYC and fly the burgee in junior events throughout North America and abroad, competing against the best junior sailors in the country and the world.



Opti's at the Northwest Youth Championships
Photo by Michael Cenname

2006 Northwest Youth Race Circuit

Regatta	Location	Date	Contact	Yacht Club
Kitten Cup	Vancouver, BC	April 29-30	Kevin Black sail_dir@royalvan.com	RVanYC
Spring Dinghy Championships	Victoria, BC	May 6-7	Sailing Director sailing@rvyc.bc.ca	RVicYC
Ski to Sea	Bellingham, WA	May 20-21	Jason Watson tuneblastr726@hotmail.com	BYC
Vancouver Lake	Vancouver, WA	June 17-18	Dean Runyan runyan@easystreet.com Sue Drake drakefam@aol.com	WSC / VLSC
South Sound (US Sailing Smythe and Bemis Eliminations)	Tacoma, WA	July 8-9	Craig Rone lfrone@aol.com	TYC
Wind Regatta	Cascade Locks, OR	July 22-23	Jan Visser jan@ussailing.net	
Junior Olympics / Optimist Pacific Coast Championships	Seattle, WA	Aug. 25-27	Brian Ledbetter brianl@seattleyachtclub.org	SYC
JAM (Johnny Adams Memorial Regatta)	Port Madison, WA	Sept. 16-17	Kathy Hartmann gkhartmann@gmail.com	PMYC
Octoberfest	Seattle, WA	Sept. 30 – Oct. 1	Jim Lyle jim@lyle.com Jamie Stewart gnsailn@attbi.com	CYC
Pumpkin Bowl	West Vancouver, BC	Oct. 21-22	Daniel Cowan sailingdirector2@wvyc.bc.ca	WVYC

SYC Summer Sailing School

Seattle Yacht Club's tradition of superior youth sailing instruction continues with our 2006 Summer Sailing School. Our program is taught using the proven US Sailing Small Boat Sailor and Small Boat Racer curriculum, with an emphasis on safety, learning, and of course, fun. We offer a range of classes for students age 7-18 of all ability levels, in both one- and two-week formats. All SYC instructors hold US Sailing instructor, as well as CPR and First Aid certifications. Our professional sailing staff is enthusiastically looking forward to the opportunity to continue the development of our returning sailors, and introduce the sport to our new ones!

Registration

SYC Members: Registration for members will be from March 27-29 via fax, mail, or in person. We strongly encourage you to take advantage of this deferential registration period, as our program fills up quickly once registration is opened to non-members. **Member registration and pricing is available to member's children, member's grandchildren, and junior members.** We encourage you to use your SYC membership number for billing purposes.

Non-Members: Open (non-member) registration will be in the Sailing Director's Office at the Seattle Yacht Club on March 30 from 8:30 am until 6:00 pm. Class availability will be on a first-come, first-serve basis for those who register in person. After the 30th, faxed and mailed-in registrations will be accepted, in addition to in-person registrations.

Registration forms and class schedules can be obtained from the SYC Web site (http://www.seattleyachtclub.org/Sailboat/Sailboat/Junior/2006_Sail_School_Brochure_Web.pdf), at SYC's Portage Bay Club House, or through the Director of Sailing's Office.



The Radial fleet heading upwind at the Northwest Youth Championships
Photo by Michael Cenname

Awards and Recognition for 2005

Thank you and congratulations to all the people who volunteered and competed last year.

In this section:

- 2005 SYC Sailing Program Leadership Team
- Junior Sailing Awards & Trophies
- Senior Sailing Awards & Trophies
- Grand Prix Regatta Awards



Fleet Captain Bruce Campbell and the crew on the Portage Bay
Photo copyright 2005 by Sean Trew

2005 SYC Sailing Program Leadership Team

Commodore	Tom Foti
Vice Commodore	Chris Otorowski
Rear Commodore	Ben Cozadd
Sail Fleet Captain	Mike Milburn
Junior Commodore	Jeff Lyle
Junior Vice Commodore	Erika Vranizan
Junior Rear Commodore	Marie Johnson
Junior Secretary	Carlen McKee
Junior Advisor	Frederic Laffitte
Around-the-Buoy Race Committee	Dick Lootens, Dick Bell, Sandy Bell, Jennifer Christenson, Dave Ferguson, Eric Greenwood, Carl Leede, Judy Leede, Lyn Pawley, Roger Pawley, and Katherine Steele
Distance Race Committee	Larry McCarthy, Joyce McCarthy, Roger Werner, Lynn Werner, Pat Crockett, Keith Johnson, Barbara Marta, Elizabeth Elmer, and Eric Van
Anthony's Friday Night Race Committee	Rhonda Halfman
Portage Bay Skippers	Denny Johnson and Scott Gienou
Judges	Eric Van, Bruce Campbell, Larry McCarthy, Ed vonWolffersdorf, and Roger Werner

Junior Sailing Awards & Trophies 2005

Bill Burdick Trophy	Junior Sailor of the Year	
	Laser	Jeff Lyle
	420	Brian Pistay / Blair Sargent
	Radial	Michael Schalka
Brent Nichols Trophy	Outstanding Sportsmanship, Inspirational Sailor	Katy Cenname
	Outstanding Junior Sailing Instructors	Marie Johnson
Ernest Gann Award	Most Improved Sailor	Sydney De La Cruz Blake Hansen
Captain Lovejoy Trophy	Optimist	Beverly Elmer
	Radial	Matt Pistay
	Laser	John Tenneson
	420	Callie Wade / William Burke
Northwest Junior Olympic Regatta	Stimson Trophy	John Renehan
	Best SYC Male Sailor	
	Joe Duthie Trophy Best SYC Female Sailor	Katy Cenname

Senior Sailing Awards & Trophies 2005

Tri-Island / Tri-Point Series	Vashon Island Trophy	John Buchan, <i>Irene</i>	
	Pt. Robinson Trophy	Gary Morgan, <i>What? A Tripp?</i>	
	Cruiser/Racer Class	Bill Boyeson, <i>Jiminy</i>	
Overall Tri-Island / Tri-Point	Walt Little Trophy	William Putnam / Scott Hallquist, <i>Kilo</i>	
	First President's Trophy	John Buchan, <i>Irene</i>	
Grand Prix Invitational	Robert H. Perry Trophy	Darrin Towe / John Hoag, <i>Storyville</i>	
	Charles Ross Trophy	Brian Watkins, <i>Declaration of Independence</i> Herb Cole, <i>Judo Chop</i>	
SYC Jack & Jill	Melges 24 NW Championship		
	1 st Overall	Brian Watkins, <i>Declaration of Independence</i>	
S.O.C.K.S. Regatta	Melges 24 Star	Herb Cole, <i>Judo Chop</i> Bill Buchan, <i>7260</i>	
	1 st in Class	William Putnam, <i>Kilo</i>	
Star & Bar Regatta	2 nd in Class	John Buchan, <i>Irene</i>	
	Deception 12 Fleet	Fleet Championship	
Cruise & Snooze Regatta	Happy Foot Award	Brain/Stoll/Wilson, <i>Three Stooges</i> Larry McCarthy, <i>Mini Magic</i>	
	Spirit Award	Frank Lawrence	
	Racer Division	Jim Marta, <i>Snake Oil</i>	
Commodore's Cruise	Cruiser/Racer Class	Phil & Deanne Calvert, <i>Runaway</i>	
	Class A	1 st	Mike & Judy Milburn, <i>Enfin</i>
		2 nd	Denis & Rene Dennehy, <i>Veritas</i>
3 rd		Chris & Shawn Otorowski, <i>Rocket J. Squirrel</i>	

Class B	1 st	Dave & Ann Ferguson, <i>Cathexis</i>
	2 nd	Bobbie & Bruce Campbell, <i>Evergreen</i> <i>Dreams</i>
	3 rd	Denis & Pam Thomas, <i>Impatience</i>
Class C	1 st	Katherine Watts & Randy Tripp, <i>Hooligan</i>
	2 nd	Susan & Charlie Stillman, <i>Gratitude</i>
	3 rd	Will & Suzanne Anderson, <i>Nutmeg of</i> <i>Consolation</i>
Gig Harbor Regatta	Flying Sails	Brian Watkins, <i>Declaration of</i> <i>Independence</i>
	Non Flying Sails	Paul Walchenbach, <i>Mata</i> <i>Hari</i>
Whidbey Island Race Week	Xzora Trophy	Brian Watkins, <i>Declaration of</i> <i>Independence</i>
Northwest Big Boat Series		John Buchan, <i>Irene</i>
Trans-Pac	1 st in Class, 3 rd Overall	Rob Fleming, <i>Coruba</i>
Swiftsure Lightship Classic	Team Trophy	<i>Coruba, Icon, Marda</i> <i>Gras</i>
	Division A	Rob Fleming, <i>Coruba</i>
	Division C	Doug Fryer, <i>Night</i> <i>Runner</i>
Swiftsure Cape Flattery	Team Trophy	<i>Declaration of</i> <i>Independence, Snake Oil,</i> <i>ReQuest</i>
	Division F, 3 rd	Jim Marta, <i>Snake Oil</i>
	Division G, 2 nd	Brian Watkins, <i>Declaration of</i> <i>Independence</i>
	Division J, 2 nd	Chris Otorowski, <i>Rocket</i> <i>J. Squirrel</i>
Kelly O'Neill Henson Memorial Trophy	Best SYC Swiftsure Finish	Rob Fleming, <i>Coruba</i>
Cruising Sailboat of the Year	Outstanding Cruising Family	Chris Warner & Pam Murray, <i>Panther</i>
Ruptured Eardrum Award	Outstanding Race Committee member	Larry McCarthy

Half Vast Award	Unique Yachting Performance	Gordon Stoll
Bob Gibbons Trophy	One-Design Sailor of the Year	Lindsay Buchan
Lake Union Sailing Trophy	Outstanding Crew Member	Randy Holbrook
Golden Potlatch Trophy	Outstanding SYC Cruiser/Racer	Phil Calvert
Bates McKee Memorial Trophy	Sailboat of the Year	Brian Watkins, <i>Declaration of</i> <i>Independence</i>
Marymont Trophy	SYC Sailor of the Year	Rob Fleming
William W. Heylman Memorial Trophy	Perpetual Sailboat Trophy	Richard Lootens



The Deception Twelve Class Fleet – growing every year
Photo by Paul Walchenbach

Grand Prix Regatta Awards

2005 Makika Braveheart Storyville Declaration of Independence Corvo Judo Chop Gaucho Percussive Maintenance	Jude Stoller Colin Booth Darrin Towe / John Hoag Brian Watkins Tom Kerr Herb Cole John Cahill Hans Spiller	1997 China Cloud Jubilee Roxanne Kurrewa Hail Merry Hanoman	Bill Buchan Bill Burnett Gordon Stoll Bob Henderson Trevor Hayward Thomas Reese
2004 Coruba Midsummer Gaia Break'n Wind Ginny Eclipse Dragonfly	Rob Fleming Stig Osterberg Bob Riggle Matt MacGregor Charles Mottl Brad Butler Pat McGarry	1996 Casseopia Charisma Showtime Fairwind Francesca Alderbaran Bedford Lass Hanoman	Charles Burnett Roser/Robins Bob Mayfield Putman/Joblonski James Miller Sherwood/Kubas John Sterry Thomas Reese
2003 Coruba Midsummer Declaration of Independence Elixir Isabeau Morphine Scooter	Rob Fleming Stig Osterberg Brian Watkins Mike Milburn Carl Freund Brad Butler Mike Wright	1995 Cassiopeia War Pig Aldebaran Magic	Charles Burnett Jeff Good Steve Kubas Dave Schutte
2002 Go Dog Go Elixir Dangerous When Wet Sibling Rivalry	Herb Cole Mike Milburn Chris Winnard Will Marken	1994 Oaxaca Aldebaran Choices II Mustang Sally	Gene Twiner Steve Kubas Dave Champion Pryde/Schlitz
2001 Go Dog Go X-S Morphine	Herb Cole Colin Nichols Brad Butler	1993 Oaxaca White Lies Elixir Twinkle White Squall	Gene Twiner James Marta Mike Milburn Alex Kimball Roger Deitz
2000 Elixir Eclipse Coral Reefer	Mike Milburn Brad Butler Dave Dupree	1992 Oaxaca Mustard Seed Sirius Another Child Rascal	Gene Twiner Stacey Wilson Ken & Joanna Hays Lloyd Mathison Bill Watkins
1999 Paddywagon Ginny Dragonfly	Brian Huse Charles Mottel Patrick McGarry	1991 Oaxaca Schuss Wild Turkey The Morgan	Gene Twiner Ed Webb David Lynch Ken & Sandy Robbins Bill Headden
1998 China Cloud Jubilee Splash Tango 2 Capella	Bill Buchan Bill Burnett Stacey Wilson Sherwood/Powley/ Kubas	Tiger Rag	

1990 Jack Rabbit Starfire Impulse Mo Betta Two	Don Hebard Nelson/ Benjamin Ken & Sandy Robbins Chuck Pepka	1988 Sachem Gadzooks Rev 1987 Bonnie Lucille Flamenca	Bill Buchan Willis/Willhite John Thompson Badgley/Callaghan Stamper/ Stamper Rocky Goodhope
1989 Snook Teddy Bear Keladi Lady Bug	Erik Bentzen Grey Hawken Ray Fiedler Alan Holt		



John Buchan and crew on Irene
Photo copyright 2005 by Sean Trew

Appendix

In this section:

- SYC Sailboat Program Officials
- 2006 Sailboat Committee
- 2006 Race Committee
- 2006 Judges
- Puget Sound Sailboat Safety Regulations
- Marks Descriptions
- Puget Sound Marks Illustration
- Lake Washington Marks Illustration



Dark Star cleared for take-off
Photo copyright 2005 by Sean Trew

SYC Sailboat Program Officials

Voting Members: Mike Milburn, Brian Watkins, Roger Pawley, Larry McCarthy, Dick Haelsig, Dick Lootens, Steve Scruggs, Frank Heffernan, Keith Johnson, Chris Warner.

2006 Sailboat Committee

Cruise & Snooze	Bill & Elizabeth Elmer	206.527.2591
Cruising Activities Chair	Chris Warner	206.782.1277
Grand Prix	Roger & Lynn Pawley	425.828.3073
Handicapper-PHRF	Mike Milburn	206.780.2525
Jack & Jill	Brian Watkins	206.276.1445
Judges Certification	Dick Lootens	425.379.8303
Kirkland Friday Nights	Jill Hendrick	206.948.5455
	Chris Hofius	206.817.8006
Leukemia Cup	Brian Watkins	206.276.1445
	Chris Warner	
Marine Traffic and Safety	Keith Johnson	206.772.2341
Mark Mayer	Dan Krier	206.323.2405
Mini 12	Bill Boyeson	
Mini Cruises	Chris Warner	206.782.1277
	Pam Murray	
PHRF Representative	Mike Milburn	206.780.2525
PIYA Representative	Keith Johnson	206.772.2341
Gig Harbor Cruise	Paul Walchenbach	206.948.7095
Protest Committee	Frank Heffernan	206.525.4813
Race Book	Randy Holbrook	206.546.3524
Race Committee Chair	Larry McCarthy	425.576.9415
Racing Activities Chair	Brian Watkins	206.276.1445
Sailboat Dinner Programs	Chris Warner	
Seattle Area Racing Council Representative	Brian Ledbetter	206.328.7009
SOCKS	Brian Watkins	206.276.1445
Star & Bar Regatta	Brian Watkins	206.276.1445
Sunshine Coast Cruise	Chris Warner	206.783.4970
	Pam Murray	
SYC Sailing Director	Brian Ledbetter	206.328.7009

Puget Sound Sailboat Safety Regulations

Tri-Island/Tri-Point Series	John Tenneson	206.322.3883
US Sailing Relations	Phil Calvert	206.720.5212
Web Registrations	Bruce Campbell	425.454.5838
	Dave Ferguson	425.889.9513

2006 Race Committee

Dick Lootens, PRO	425.379.8303		
Carl Leede	206.329.1357	Keith Johnson	206.772.2341
Chris Brain	425.822.5884	Larry McCarthy	425.576.9415
Denis Thomas	425.823.9776	Lyn Pawley	425.828.3073
Dick Bell	425.486.9535	Pat Crockett	206.354.9127
Don Glockner	206.781.8239	Roger Pawley	425.828.3073
Elizabeth Elmer	206.527.2591	Sandy Bell	425.486.9535
Gordon Stoll	206.303.2066	Steve Scruggs	425.828.6301
Jennifer Christenson	360.825.2379	Tora Koch	425.765.3151
Judy Leede	206.329.1357	Tucker Barnes	425.741.7046
Brian Ledbetter	206.328.7009	Brian Watkins	206.276.1445

2006 Judges

Certified Judges

Dick Lootens, Sail Committee Chair
Eric Van
Will Anderson
Richard Hatch
Joe James
Richard Lootens
Charlie Macaulay
Don McCammon
Ken Tucker
Ed von Wolffersdorff
Wayne Balsiger

Other Judges

Frank Heffernan, Judging Committee Chair
Bruce Campbell
Roy Gunsolus
Keith Johnson
Fritz Lanzinger
Andy Mack
Jamie Mack
Ken McEwan
Larry McCarthy
Mike Milburn
Jay Renehan
Douglas Stumberger
Roger Werner

2002 Revision

As adopted by the Shilshole Bay, Sloop Tavern, Corinthian, and Seattle Yacht Clubs

We must share Puget Sound with its commercial traffic, including many deep-water vessels and tows. It is sobering to note that, if your boat is one mile dead-ahead of a freighter coming down the Sound at normal speed, and the freighter's helm is put hard over to avoid you, the freighter's bow will miss you, but her stern will not! Obviously this implies that early and decisive action is required to keep your boat out of the path of a large oncoming vessel or tow.

1. Yachts must not sail across a tow line, too close ahead, or too close alongside of commercial traffic. Deep water vessels have limited ability to change course and speed. Barges under tow can yaw unexpectedly well out to the side at speeds essentially the same as they are being towed. Yachts should not pass less than one mile ahead and 1/4 mile to the side of large vessels.
2. Rule 10 of the International and Inland Rules to Prevent Collisions at Sea (COLREGS) requires that no power-driven vessel less than 20 meters (66 feet) in length, and no sailing vessel (of any size) may impede the safe passage of a power-driven vessel following a Vessel Traffic System (VTS) Lane.
3. Rule 9 of the COLREGS requires that no power vessel of less than 20 meters (66 feet) in length and no sailing vessel (of any length) shall impede the safe passage of any vessel which can navigate only within a narrow channel or fairway. Puget Sound can be considered a "narrow channel" for most large commercial traffic. "Impede" means to cause to alter speed or course or to take evasive action.
4. A yacht in position where it may impede commercial traffic must exit from the "danger area" immediately, under auxiliary power if necessary. If power is used, it must be reported to the Race Committee at the finish line. Also, a written report must be made on a protest form, showing the location, time, duration of power use, speed, direction of exit, and that the competitive position of the yacht was not improved. If the last item cannot be demonstrated adequately, a time penalty may be imposed.
5. Radar reflectors must be flown at all times when racing. They must meet IMO recommendations (i.e., of metal plates of sufficient rigidity to maintain a 90 degree angle), be not less than 12 1/2 inches in diameter, and be installed not less than 4 meters (13 ft.) above the water. See PIYA Special Regulations paragraph 3.8.
6. Navigation lights must be shown between sunset and sunrise as required by the International Rules of the Road.
7. Observed and/or reported violations of the safety regulations may be protested. The Race Committee shall have the option of issuing a "warning" when deemed appropriate. Warnings are recorded and may be considered when judging any future reports.

Mark Descriptions

Bearings are magnetic. Distances are in nautical miles (NM). Bearings and distances are approximate.

Buoy Course Marks (position relative to race committee signal boat)

- A Yellow mark windward of the race committee signal boat
- B Yellow gybe mark
- C Yellow mark leeward of race committee signal boat
- U Orange mark leeward of the race committee signal boat
- X Orange mark beyond 0.25 NM windward of race committee signal boat
- Y Orange gybe mark
- Z Orange mark within 0.25 NM windward of the race committee signal boat
- F Yellow finishing mark
- S Red or yellow starting mark

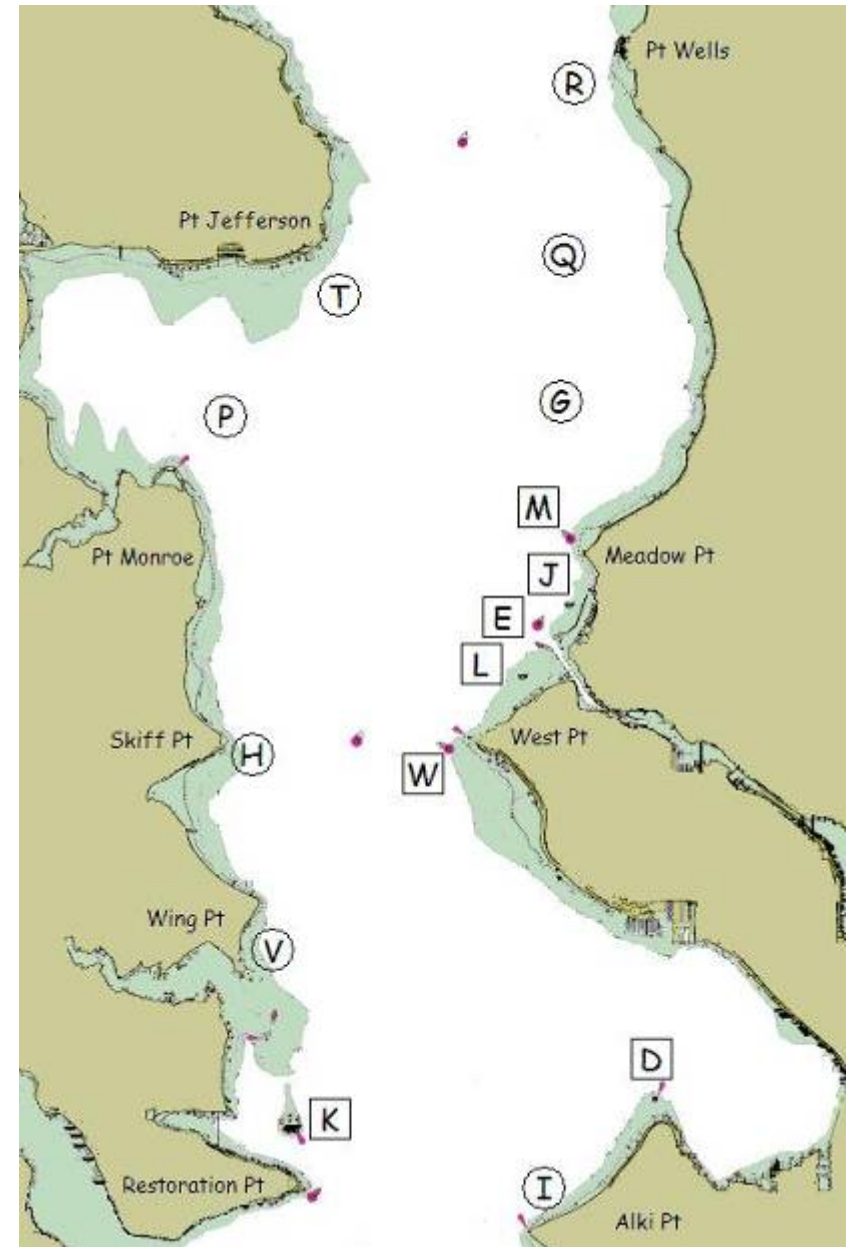
Puget Sound Marks (position based on geographic location)

- D Duwamish Head Lt. (LL #16910)
- E Shilshole Bay Approach Buoy (LL #16785)
- G Temporary mark 1.5 NM bearing 340 degrees from Meadow Pt.
- H Temporary mark 0.3 NM E of Skiff Pt.
- I Temporary mark 0.5 NM N of Alki Pt.
- J Shilshole Bay North Mooring Buoy 1/4 NM SSW of Shilshole Marina north entrance
- K Blakely Rock (LL #16830)
- L Shilshole Bay South Mooring Buoy 1/2 NM SW of Shilshole Marina south entrance
- M Meadow Pt. Buoy (LL #16765)
- P Temporary mark 0.75 NM NNE of Pt. Monroe
- Q Temporary mark 3.0 NM bearing 340 degrees from Meadow Pt.
- R Temporary mark 0.5 NM SW of Pt. Wells
- T Temporary mark 0.5 NM SE of Pt. Jefferson
- V Temporary mark 0.3 NM NNE of Wing Pt.
- W West Pt. Buoy (LL #16805)

Lake Washington Marks are as shown in the Lake Washington Marks Illustration.

Puget Sound Marks Illustration

Each temporary mark is shown with its label in a circle. Each permanent mark is near its label in a square box. Positions are approximate.



Lake Washington Marks Illustration

Positions are approximate.

