

Cruise & Snooze & Sailboat Rendezvous

Sailing and Race Instructions

September 9-10, 2017



Committee Boats:
VHF Channel

S/V Vredbest (Start) M/V Panther (Finish)
Channel 72

Time Limit

1600 hours Saturday (Please call R/C on 72 if you retire)
1600 hours Sunday (Please call R/C on 72 if you retire)

Race Course

A chart is attached with short, medium, and long course. Check with committee boat prior to race. R/C will display "S", "M", or "L" for which course according to a South wind or a North Wind. Sunday is a reverse of the "S", "M", or "L" course.

Special Rules

This is a fun race, no flying sails. Race Committee can change Sailing Instructions over channel 72 prior to the start sequence.

Safety Equipment PIYA category III required

Reverse start using modified PHRF/Open Class Handicaps. Starting times will be assigned so that the higher handicap boats start earlier than the faster boats with the goal being each class finishes at about the same time.

Starting Sequence: We will try to start on the hour at 11:00 GPS time, but be prepared after 11:00 if no wind and start with your minute offset. We will try to communicate over VHF 72 also. You are responsible for your start time and start.

Saturday Start time: 11:00 AM

Sunday Start time: 12:00 PM

05 minutes before start sequence

Blue Flag & Sound

01 minute before start sequence

Blue Flag comes down

00 minute starting sequence starts

Blue Flag & Sound

Other signals:

Course: "S" Short Course, "M" Medium Course or "L" Long Course will be displayed

Postponement: AP pennant (red & white vertical stripes) & 2 sounds

Start R/C boat: *S/V Vredebest*

Start is between Committee Boat (*S/V Vredebest*) and orange start mark

Finish R/C boat: *M/V Panther*

Finish is between Committee Boat (*M/V Panther*) and Port Madison Mooring Bouy.

Competitor List and Start Times

(as of 03:30 PM September 8, 2017)

Class	Boat	Rating	Boat Type	HelmName	Distances					
					Northerly			Southerly		
					Short	Medium	Long	Short	Medium	Long
					6.494	9.532	11.88	7.519	10.067	12.62
R	Strider	188	Ranger 33	Keith Johnson	11:00	11:00	11:00	11:00	11:00	11:00
R	Seoladh	180	Ranger 33	Dave Ferguson	11:00	11:01	11:01	11:01	11:01	11:01
C	Reverie	174	Dufour 31	Jeff Snell	11:01	11:02	11:02	11:01	11:02	11:02
R	Gypsy Wind	168	Nonsuch 36	Alexander Kimball	11:02	11:03	11:03	11:02	11:03	11:04
R	Lightfoot	159	Beneteau First 345	Tom Leonard	11:03	11:04	11:05	11:03	11:04	11:06
C	Final Rose	150	Catalina 36	Jean Higgins	11:04	11:06	11:07	11:04	11:06	11:08
C	Roxie	138	Jeanneau Sun Fast	Mike Massa	11:05	11:07	11:09	11:06	11:08	11:10
C	Tatoosh	123	Islander P40	Doug Penney	11:07	11:10	11:12	11:08	11:10	11:13
C	Dark Side	91	Schock 35	Nick Leede	11:10	11:15	11:19	11:12	11:16	11:20
C	Night Train	90	Beneteau 52	Nicholas Vedder	11:10	11:15	11:19	11:12	11:16	11:20
C	Blue Kai	88	Benetau 47	Robert Lerman	11:10	11:15	11:19	11:12	11:16	11:21
C	Southern Star	84	Hylas 54	Kathryn Crossland	11:11	11:16	11:20	11:13	11:17	11:21
C	Luna	84	Hanse 455	Gordon Stoll	11:11	11:16	11:20	11:13	11:17	11:21

If a NORTH wind direction

WIND DIRECTION

Short Course (6.494 NM) R/C displays "S"

Start near Shilshole Bay N Mooring buoy "J"

Round Meadow Point Buoy "M" to port

Finish at Port Madison Mooring Buoy "B"

Medium Course (9.532 NM) R/C displays "M"

Start near Shilshole Bay N Mooring buoy "J"

Round Meadow Point Buoy "M" to port

Round West Point Buoy "W" to starboard

Finish at Port Madison Mooring Buoy "B"

Long Course (11.88 NM) R/C displays "L"

Start near Shilshole Bay N Mooring buoy "J"

Round Meadow Pt Buoy "M" to port

Round West Point Buoy "W" to port

Round Meadow Pt Buoy "M" to port

Finish at Port Madison Mooring Buoy "B"



If a SOUTH wind direction

WIND DIRECTION

Short Course (7.519 NM) R/C displays "S"

Start near Shilshole Bay N Mooring buoy "J"

Round West Point Buoy "W" to starboard

Finish at Port Madison Mooring Buoy "B"

Medium Course (10.067 NM) R/C displays "M"

Start near Shilshole Bay N Mooring buoy "J"

Round West Point Buoy "W" to port

Round Meadow Point Buoy "M" to port

Finish at Port Madison Mooring Buoy "B"

Long Course (12.62 NM) R/C displays "L"

Start near Shilshole Bay N Mooring buoy "J"

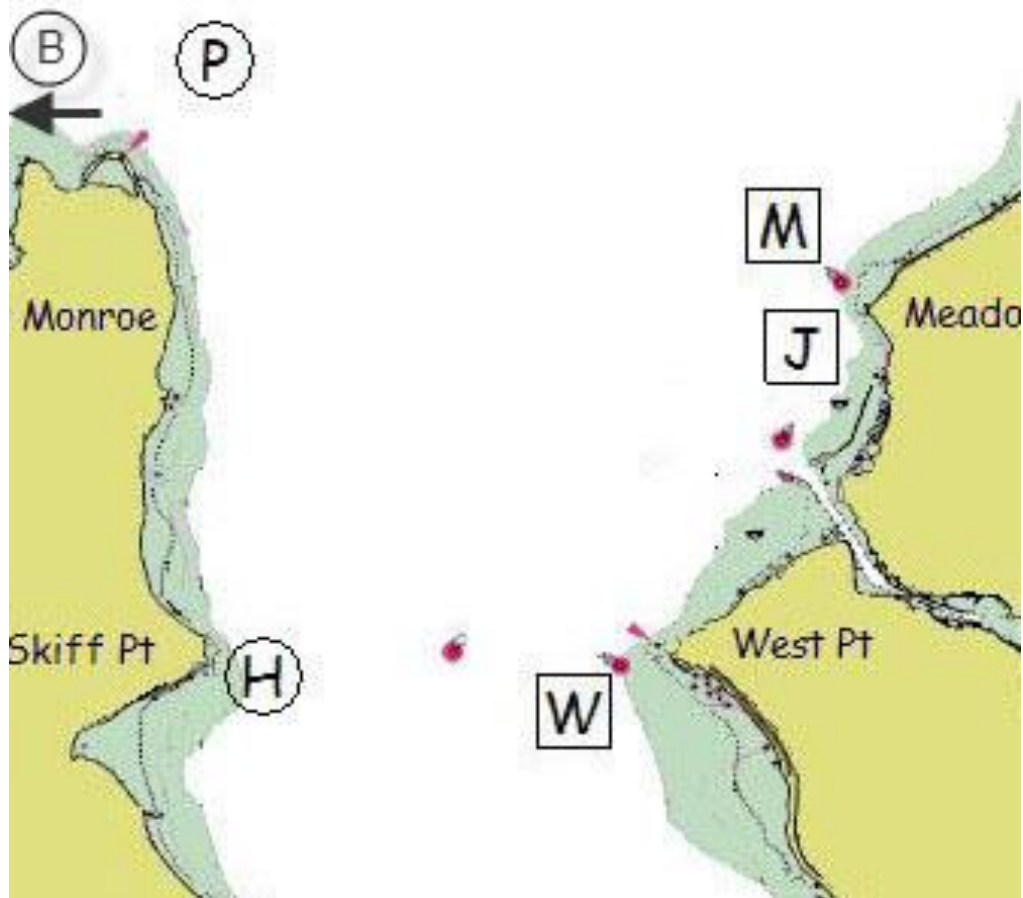
Round West Point Buoy "W" to starboard

Round Meadow Pt Buoy "M" to starboard

Round West Point Buoy "W" to starboard

Finish at Port Madison Mooring Buoy "B"





- B** – Port Madison Mooring Buoy 47 42.688”N 122 32.98”W
- J** – Shilshole Bay N Mooring Buoy (LL #16785)
- H** – Temporary mark at Skiff Pt – 47 39.660”N 122 29.572”W
- M** – Meadow Pt Bouy (LL #16765)
- P** – Temporary mark 0.75 NM NNE of Pt Monroe
- W** – West Pt Buoy (LL #16805)