



# Seattle Yacht Club

*Established in 1892*

## 2017 Race Book And Sailing Program Information



© DANIEL FORSTER / US SAILING TEAM  
FOR EDITORIAL USE ONLY





*Joy Ride* – Seattle Yacht Club 2016 Sailboat of the Year

Seattle Yacht Club

**2017 Race Book  
And  
Sailing Program Information**

1807 East Hamlin Street  
Seattle, Washington 98112  
[www.SeattleYachtClub.org](http://www.SeattleYachtClub.org)

Front Desk	206.325.1000
Sailing Office	206.926.1011

# Table of Contents

Welcome to the 2017 Sailing Season.....	1
Sailboat Activity Calendar.....	3
Race Registration Procedure.....	4
Registration Checklist.....	5
SYC Sailboat Racing Program.....	6
Overview of Sailboat Racing Events.....	6
SYC Notice of Race Addendum.....	8
Puget Sound Sailboat Safety Regulations.....	10
Puget Sound Orca Safety Regulations.....	11
Buoy Course Marks (position relative to R/C).....	12
Geographic Marks (position based on location).....	13
Notice of Race	
SYC Tri-Island Protection Island Race.....	14
Notice of Race	
SYC Mark Mayer Regatta.....	16
Notice of Race	
SYC Tri-Island Vashon Island Race.....	17
Race Information	
SYC Tri-Island Blake Island Race.....	19
Race Information	
SYC Grand Prix Invitational Regatta.....	21
SYC Deception Class Mini-12 Fleet.....	23
SYC Sailboat Cruising Program.....	25
Overview of Sailboat Cruising Events.....	25
Winter and Spring Power/Sail Mini Cruises.....	26
Leukemia Cup Regatta.....	27
Notice of Race	
SYC Sailboat Rendezvous and Cruise & Snooze.....	28
Commodore's Cruise.....	29
Sunshine Coast Cruise.....	29
SYC Sailing School and Junior Race Team.....	30
Summer Sailing School.....	30
Junior Race Team.....	31
Tuesday Night Sailing.....	31
High School Sailing at SYC.....	32
Opti Green Fleet Program.....	32
Adult Sailing Courses.....	32
Private Sailing Lessons.....	33
The Small Boat Fleet at SYC.....	33
Sailing Office Contact Information.....	34
Awards and Recognition.....	35
Junior Sailing Awards.....	35
Outstanding Achievement in Sailing.....	35
Appendix.....	36
Sailing Program Leadership Team.....	36
Sailing Program Contacts.....	37

# Welcome to the 2017 Sailing Season



The Seattle Yacht Club has a long history of organizing a broad range of public events to promote boating in the Pacific Northwest for all the boating community. I am very excited for the 2017 season!

Our events happen because enthusiastic people decide to take action, as follows: (1) A couple dozen member and guest volunteers plan and run the events, (2) the members of Seattle Yacht Club and their leadership choose to allocate coveted funds into programs that mitigate expenses but don't cover their total costs, and (3) hundreds of people get their families and friends on the water and into our events. Whichever role you play, thank you! Your participation makes more sailing happen and enriches the lives of everyone involved.

[Phil Calvert](#) is our Race Chair for all our regattas. Phil is looking to invigorate the outstanding regattas SYC runs and to continue the rich history of racing throughout the Pacific Northwest.

[Chuck Stephens](#) is Race Committee Chair. Under Chuck's leadership, volunteers will have excellent instruction on specific race committee duties. Please contact Chuck to get out on the water as a member of the race committee team providing top level racing services to our regatta participants.

[Jim Medley](#) is our Protest Committee Chair and brings a history of World and National sailing experience to our program. Jim's knowledge is a welcome addition to the regatta program at SYC.

[Naomi Medley](#) is our Promotion and Public Relations Chair who will work closely with all the Chairs to promote the SYC events. Naomi is very excited to share all the SYC events through many media outlets that are available.

SYC is continuing our long standing involvement in the Leukemia Cup, with a low-key race/parade around Elliott Bay and a huge party on site at Elliott Bay Marina. In parallel with your individual causes, whatever they may be, please consider joining your fellow boaters at this fun and meaningful event. This is also a perfect way to make use of your boat and help you develop your crew into a team. Just being there is all you have to do to support our community.

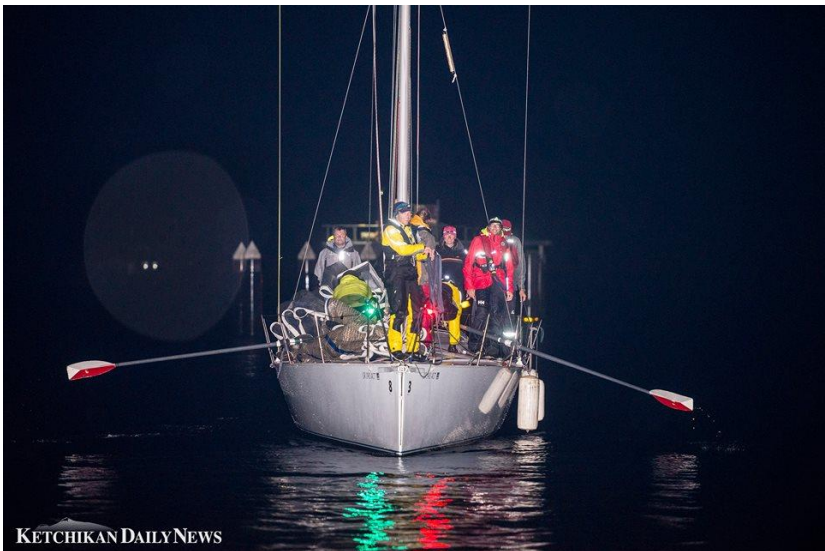
The T-37 remote control sailboat program, led by [Allan Van Ness](#), has quickly become one of the hottest sailing fleets anywhere. They have regular casual races

and some more serious championships. Anyone can play, the cost of entry is low, and the community is welcoming. Contact Allan to get involved.

The cruiser/race class is key to the soul and future of our sport. These boats sail with fewer crew on shorter, relaxed courses while the more race-optimized boats sail longer courses. Start your season by signing up for Tri-Island.

The Sailboat Committee meetings are at 6:30 p.m. on the first Thursday of most months. Whatever your interest in sailing, please come and lend a hand.

Rhonda Halfman, 425-246-3612, [rhondaha@gmail.com](mailto:rhondaha@gmail.com)  
Fleet Captain Sail



Jungle Kitty Team at finish of 2016 Race to Alaska, 1<sup>st</sup> Monohull, 2<sup>nd</sup> Overall

# Sailboat Activity Calendar

## 2017 SCHEDULE

### JANUARY

7-8 Mini-Cruise/Remote Control  
Derby – Port Madison

### FEBRUARY

2 Sailboat Business Meeting  
4-5 Mini-Cruise/City Weekend –  
Bell Harbor  
9 Sailboat Dinner

### MARCH

2 Sailboat Business Meeting  
4-5 Mini-Cruise – Eagle Harbor  
9 Sailboat Dinner

### APRIL

1 High School Opener Regatta  
6 Sailboat Business Meeting  
8-9 Mini-Cruise/Island Weekend –  
Blake Island  
13 Sailboat Dinner  
29-30 Protection Island Race (**Tri-  
Island Series #1**)

### MAY

4 Sailboat Business Meeting  
6 SYC Opening Day  
7 Mark Mayer Opening Day Race  
and Party (Free)  
13 Vashon Island Race  
(**Tri-Island Series #2**)  
18 Sailboat Dinner (w/ Power)  
20 Jr. Leukemia Cup- Portage Bay  
27-29 Mini-Cruise/Memorial Day –  
Poulsbo Y.C

### JUNE

1 Sailboat Business Meeting  
3 Blake Island  
(**Tri-Island Series #3**)  
10 Leukemia Cup, Elliott Bay  
24-25 Sailboat Rendezvous **AND** Cruise  
& Snooze A/B

### JULY

16-22 Commodore's Cruise  
23-29 Sunshine Coast Cruise

### AUGUST

13-14 McCurdy Trophy Regatta  
26-27 PNW Jr. Olympics Regatta

### SEPTEMBER

7 Sailboat Business Meeting  
9-10 Cruise & Snooze C/D  
14 Sailboat Dinner  
30 T-37 Nationals, SYC Dock 2

### OCTOBER

5 Sailboat Business Meeting  
12 Sail/Power Dinner  
26 Business Mtg. / G.P. Packets  
27-29 Grand Prix Regatta – **Awards  
Party Sunday 29th at SYC**

### NOVEMBER

2 Sailboat Business Meeting  
4 SYC Jr. Fleet Championships  
17 Annual Sailing Awards Party

### DECEMBER

7 Sailboat Business Meeting  
14 Sail/Power Gift Exchange

# Race Registration Procedure

## Online Registration

Online race registration is available from the Seattle Yacht Club website at [www.seattleyachtclub.org/regattas](http://www.seattleyachtclub.org/regattas)

## Printed Entry Forms

Race entry forms are available at the Seattle Yacht Club Sailing Office. Please return your completed form with entry fees to the attention of the Sailing Office at the Seattle Yacht Club.

## Registration Deadlines

Registrations must be submitted online or received by Seattle Yacht Club by midnight on the entry deadline for each race. The deadline is typically the Thursday preceding the race unless otherwise indicated in the Notice of Race. Registrations accepted at the discretion of the race committee after the deadline will be assessed a \$30 late fee.

## Season Fee Package

A season fee is available for the Tri-Island Series. The deadline is the deadline for the first race in the package.

## Contact

For registration issues, please contact the Seattle Yacht Club Sailing Director, Brian Ledbetter, in the SYC Sailing Office.

Phone: 206.926.1011. Email: [brianl@seattleyachtclub.org](mailto:brianl@seattleyachtclub.org)



High School sailing on Lake Union.



# Registration Checklist

Date	Event	Cruiser/ Racer	Entry Fee	Deadline <sup>2</sup>	Enter
(3 events)	<u>Tri-Island Package</u>	Yes	\$180	April 27	<input type="checkbox"/>
April 29	<u>Protection Island Race</u> (Tri-Island #1)	Yes	\$70 <sup>1</sup>	April 27	<input type="checkbox"/>
May 7	<u>Mark Mayer</u> <u>Opening Day Race</u>	Yes	Free!!	May 7	<input type="checkbox"/>
May 13	<u>Vashon Island Race</u> (Tri-Island #2)	Yes	\$70 <sup>1</sup>	May 11	<input type="checkbox"/>
June 3	<u>Blake Island</u> (Tri-Island #3)	Yes	\$70 <sup>1</sup>	June 1	<input type="checkbox"/>
June 24-25	<u>Cruise &amp; Snooze A/B*</u>	Yes	\$50	June 23	<input type="checkbox"/>
July 16-21	<u>Commodores Cruise</u>	Yes	\$180	July 10	<input type="checkbox"/>
July 22-28	<u>Sunshine Coast Cruise</u>	Yes	TBD	July 15	<input type="checkbox"/>
Aug 26-27	<u>Junior Olympics</u>	No	\$60	Aug 26	<input type="checkbox"/>
Sept 9-10	<u>Cruise &amp; Snooze C/D*</u>	Yes	\$50	Sept 8	<input type="checkbox"/>
Oct 27-29	<u>41st Annual</u> <u>Grand Prix Regatta</u> Boats under 30' 30' to under 40' 40' and over	No	\$175 \$225 \$275	Oct 25	<input type="checkbox"/>

Payment not required for Pre-Registration, Register early and build your class!!

<sup>1</sup>Tri-Island Series Package (Protection, Vashon, and Blake Island Races) is available for \$180.

<sup>2</sup>Registrations received after deadline date, (typically Thursday midnight before event), may be assessed a \$30 late fee.

\*Cruise and Snooze and Commodores/Sunshine Coast Cruises require membership for use of outstation moorage.

# SYC Sailboat Racing Program

With events ranging from one-design championships to the longer-distance Tri-Island races, Seattle Yacht Club actively promotes a variety of racing here in the great Pacific Northwest. In this section:

- Overview of Sailboat Racing Events
- SYC Notice of Race Addendum
- Protection Island Race
- Mark Mayer Regatta
- Vashon Island Race
- Blake Island Race
- 41st Annual Grand Prix Regatta

## Overview of Sailboat Racing Events

### Hosted and Away Regattas

Each year we look for a regional or national regatta to host locally, or we send a team to a major event hosted outside our area, such as the Lipton Cup or Invitational Cup.

### Tri-Island Series

The Tri-Island series continues the tradition of offering longer courses to test your stamina and strategic knowledge of Puget Sound. Pre parties will be held on the Fridays prior to Smith Island and Vashon Island. The series award party will be held at the Corinthian Yacht Club Clubhouse after the Blake Island Race. A shorter Cruiser/Racer course will be offered for each race.

#### Smith (or) Protection Island Race

Alternating between Smith Island in even years, and Protection Island in odd years, these courses are our longest races for the year, with several challenging decision points and the opportunity to experience more wind, waves, and current conditions than normal.

#### Vashon Island Race

The Vashon Island course is one of the most popular races, with several distinct racing phases. Get ahead and go for a breakaway, or, if not so fortunate, hope to bring the wind to your competitors waiting at the next corner. These tactical courses will take you south with scenic views of Elliott Bay and Mt. Rainier.

#### Blake Island Race

Whether you're testing your mettle or rolling the dice, **you** select which way to round Blake Island. Finish off Elliott Bay Marina with Tri-Island Series Awards Party at the Seattle Yacht Club Elliott Bay outstation clubhouse.

## **Mark Mayer Regatta**

The Mark Mayer Regatta is coordinated with the Opening Day weekend. The course is just north of the Evergreen Point Bridge on Lake Washington. A post-race party will be at the Seattle Yacht Club Portage Bay clubhouse.

## **Grand Prix Invitational Regatta**

The season's racing activities culminate with the Grand Prix Invitational Regatta. Boats must qualify for this prestigious invitation-only event. Whole one design fleets with representative qualifiers may also be invited. Grand Prix primarily tests buoy racing skills and, if conditions are right, middle distance racing skills over a three-day period with parties every evening.



Cruiser/Racer competition at Tri-Island, Mark Mayer, and Cruise & Snooze

## **SYC Notice of Race Addendum**

The SYC Notice of Race Addendum is common language that a particular Notice of Race may specifically incorporate. If a Notice of Race and the SYC Notice of Race Addendum are in conflict, the Notice of Race shall have precedence. The organizing authority is the Seattle Yacht Club.

### **1 Rules**

- 1.1 This regatta will be governed by the rules as defined in the Racing Rules of Sailing (RRS).
- 1.2 The prescriptions of US Sailing to the following rules shall apply: 34, 40, 48.1, 56, 60, 61.4, 63.2, 63.4, 64.3(b), 67, 70.5(a), 76.1, 82, 86.3, 88.2, Appendix G, R, and T. The text of these prescriptions is available from the US Sailing website at [raceadmin.ussailing.org/rules/prescriptions](http://raceadmin.ussailing.org/rules/prescriptions).
- 1.3 Other changes to the rules may be noted elsewhere in the Notice of Race or Sailing Instructions. If the Notice of Race and Sailing Instructions are in conflict, the Sailing Instructions shall have precedence.
- 1.4 Changes to the Notice of Race will be available from the Seattle Yacht Club website at [www.seattleyachtclub.org/regattas](http://www.seattleyachtclub.org/regattas) or, if not available from the website, on the notice board at the Seattle Yacht Club south entrance.

### **2 Eligibility and Entry**

- 2.1 Entrants must register online at [www.seattleyachtclub.org](http://www.seattleyachtclub.org), or by form delivered to Seattle Yacht Club, and pay appropriate fees by the registration deadline. Registration after the deadline may be accepted at the discretion of the organizing authority and may require an additional late fee.
- 2.2 A boat wishing to use sails with identification different from her own must receive permission from the organizing authority by the registration deadline or when her late registration is accepted. This changes RRS 77.
- 2.3 A boat racing in a handicap class must ensure that her correct rating is issued and recorded by the class organization by the registration deadline or when her late registration is accepted. Boats participating without a valid class certificate will not be entered or scored and her entry fee may not be refunded.
- 2.4 A change in a boat's handicap class rating will take effect on the day it is recorded by the class organization. Changes are not retroactive. When a boat's rating changes between races that are part of a series, the boat shall remain in the same class in which she started the series.
- 2.5 A boat rated by her handicap class in consideration of water ballast may use water ballast as rated. This changes RRS 51.

### **3 Operating and Equipment Requirements**

- 3.1 Sailing is an activity that has an inherent risk of damage and injury. Competitors in this event are participating entirely at their own risk. See RRS 4, Decision to Race. The responsibility for a boat's decision to participate in a race or to continue racing is hers alone. The race organizers (organizing authority, race committee, protest committee, host club, sponsors, or any other organization or official) will not be responsible for damage to any boat or other property or the injury to any competitor, including death, sustained as a result

of participation in this event. By participating in this event, each competitor agrees to release the race organizers from any and all liability associated with such competitor's participation in this event to the fullest extent permitted by law.

- 3.2 A monohull boat racing in a PHRF handicap class must comply with one of the two following sets of equipment requirements, (a) or (b). For multihulls or boats racing in an IRC class they must comply with (b):
- a) Pacific International Yachting Association (PIYA) Safety Equipment Requirements according to the category requirement identified in the Notice of Race. The text of these regulations is available from the PIYA website at [www.pivasailing.net](http://www.pivasailing.net).
  - b) World Sailing Offshore Special Regulations (OSR), without US Sailing prescriptions, according to the category requirement identified in the Notice of Race. The text of these regulations is available from the World Sailing website at <http://www.sailing.org/documents/offshorespecialregs/index.php>. The following changes apply to OSR Categories 3 and 4:
    - (1) OSR 3.28.1 required as in SER Nearshore Category. If using outboard motor, it shall be on its operating mount and easily inserted into the water for immediate use including during severe sea and wind conditions.
    - (2) OSR 3.28.3.b required as in Nearshore and Inshore Categories and (b) duration requirement changed to 6 hours.
    - (3) OSR 4.26.2 (a) is changed to: mainsail reefing to reduce the luff by at least 10%.
- 3.3 Boats must comply with U.S. Coast Guard regulations.
- 3.4 Boats must be operated in accordance with the Puget Sound Sailboat Safety Regulations, available in the appendix of this Race Book.
- 3.5 The race committee may inspect a boat any time before or after racing for compliance with requirements.
- 3.6 Penalties under SYC Notice of Race Addendum 3 may be less than disqualification. This changes RRS 64.1.

#### **4 Scoring**

- 4.1 The time limit is the maximum allowable time from each boat's starting signal to her finish time or a time of day. Boats that do not finish within their time limit, or report a halfway time as designated for the Tri-Island series, will be scored Did Not Finish (DNF). This changes RRS 35.
- 4.2 A boat that did not start (DNC, DNS, OCS), did not finish (DNF), retired (RET), or is disqualified (DSQ, DNE, DGM, BFD) will be scored the number of finishers plus one. This changes RRS A4.2 and A9.
- 5 Sailing Instructions
- 5.1 Sailing Instructions will be available by the Thursday before the first race from the Seattle Yacht Club website at [www.seattleyachtclub.org/regattas](http://www.seattleyachtclub.org/regattas) or, if not available from the website, on the notice board at the Seattle Yacht Club Portage Bay clubhouse south entrance.

## **Puget Sound Sailboat Safety Regulations**

2016 Revision as adopted by the Shilshole Bay, Sloop Tavern, Corinthian of Seattle, and Seattle Yacht Clubs

We share Puget Sound with its commercial traffic, including many deep-water vessels and tows. It is sobering to note that, if your boat is one mile dead-ahead of a freighter coming down the Sound at normal speed, and the freighter's helm is put hard over to avoid you, the freighter's bow will miss you, but her stern will not! Obviously, this implies that early and decisive action is required to keep your boat out of the path of a large oncoming vessel or tow.

1. Yachts must not sail across a tow line, too close ahead, or too close alongside of commercial traffic. Deep water vessels have limited ability to change course and speed. Barges under tow can yaw unexpectedly well out to the side at speeds essentially the same as they are being towed. Yachts should not pass less than one mile ahead and 1/4 mile to the side of large vessels.
2. Rule 10 of the International and Inland Rules to Prevent Collisions at Sea (COLREGS) requires that no power-driven vessel less than 20 meters (66 feet) in length, and no sailing vessel (of any size) may impede the safe passage of a power-driven vessel in a VTS lane.
3. Rule 9 of the COLREGS requires that no power vessel of less than 20 meters (66 feet) in length and no sailing vessel (of any length) shall impede the safe passage of any vessel which can navigate only within a narrow channel or fairway. Puget Sound can be considered a "narrow channel" for most large commercial traffic. "Impede" means to cause to alter speed or course or to take evasive action.
4. A yacht in position where it may impede commercial traffic must exit from the "danger area" immediately, under auxiliary power if necessary. If power is used, it must be reported to the Race Committee at the finish line. Also, a written report must be made on a protest form, showing the location, time, duration of power use, speed, direction of exit, and that the competitive position of the yacht was not improved. If the last item cannot be demonstrated adequately, a time penalty may be imposed.
5. Navigation lights must be shown between sunset and sunrise as required by the International Rules of the Road.
6. Observed and/or reported violations of the safety regulations may be protested. The Race Committee shall have the option of issuing a "warning" when deemed appropriate. Warnings are recorded and may be considered when judging any future reports.



## **Puget Sound Orca Safety Regulations**

### **U.S. Coast Guard Advisory**

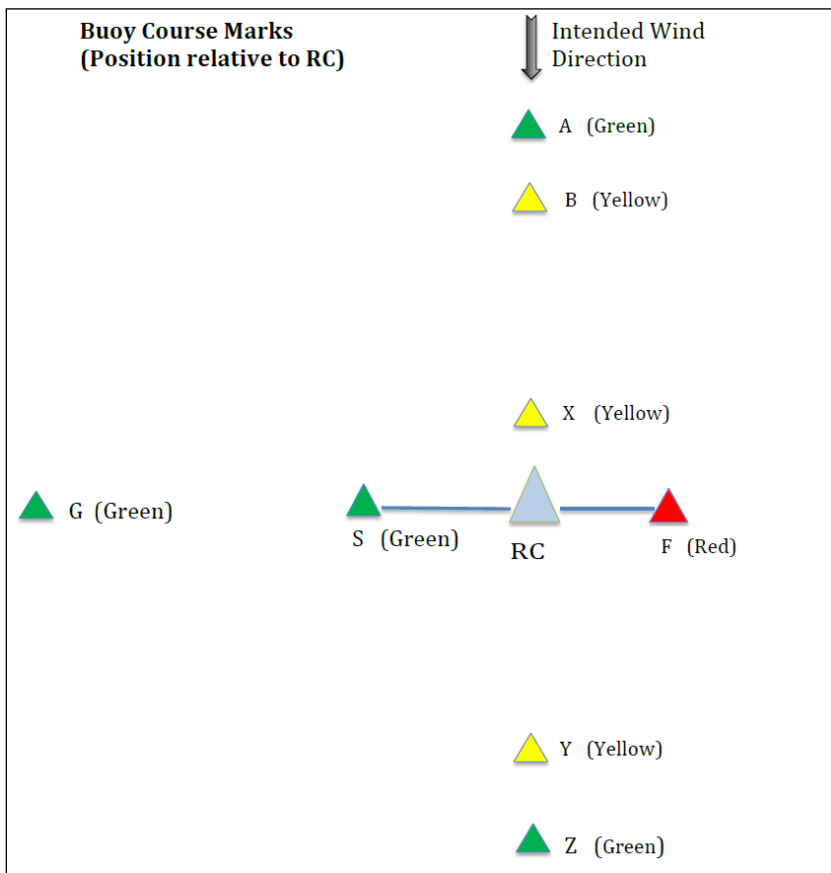
The U.S. Coast Guard has requested that you be aware of Washington State Law RCW 77.15.740 which makes it illegal to:

- Cause a vessel or other object to approach, in any manner, within two hundred yards of a resident orca whale;
- Position a vessel to be in the path of a southern resident orca whale at any point located within four hundred yards of the whale. This includes intercepting a southern resident orca whale by positioning a vessel so that the prevailing wind or water current carries the vessel into the path of the whale at any point located within four hundred yard of the whale;
- Fail to disengage the transmission of a vessel that is within two hundred yards of a southern resident orca whale; or
- Feed a southern resident orca whale.



## Buoy Course Marks (position relative to RC)

Please note that the Sailing Instructions for a particular race may use modified or different mark descriptions than described here.

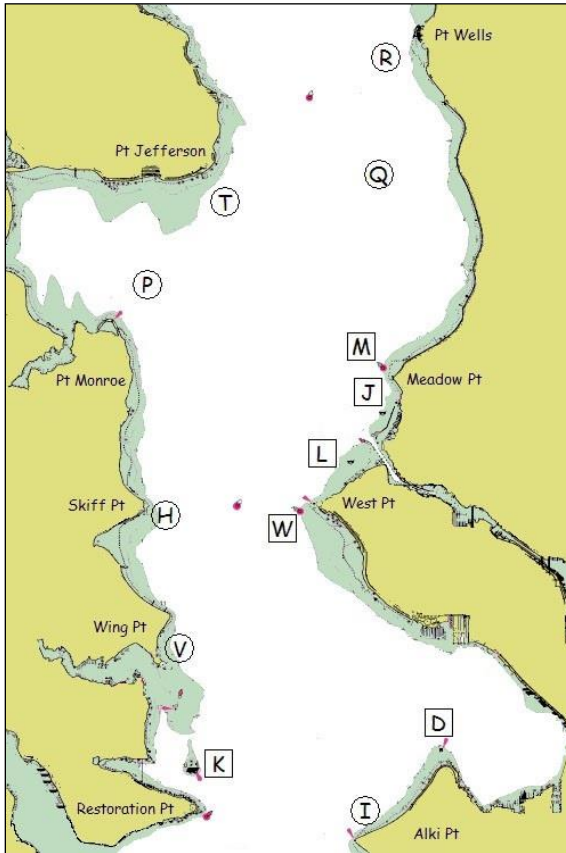


The course diagram for buoy course marks shows the general orientation of the Race Committee signal boat "R/C", other marks, (identified by the letters S, A, B, C, O, G, X, Y, Z and F), and the intended wind direction. All marks other than the race committee signal boat are inflatable buoys. Positions are approximate and the diagram is not to scale.

S When a starting mark is for a downwind start, it may be on either side of the race committee boat.



## Geographic Marks (position based on location)



Bearings are magnetic. Distances are nautical miles (NM). Bearings, distances, and positions are approximate. Each temporary mark is shown with its label in a circle. Each permanent mark is near its label in a square box.

- D Duwamish Head Lt. (LL #16910)
- H Temporary mark 0.3 NM E of Skiff Pt.
- I Temporary mark 0.5 NM N of Alki Pt.
- J Shilshole Bay N Mooring Buoy 0.25 NM SSW of N entrance
- K Blakely Rock (LL #16830)
- L Shilshole Bay S Mooring Buoy 0.5 NM SW of S entrance
- M Meadow Pt. Buoy (LL #16765)
- P Temporary mark 0.75 NM NNE of Pt. Monroe
- Q Temporary mark 3.0 NM bearing 340° from Meadow Pt. Buoy
- R Temporary mark 0.5 NM SW of Pt. Wells
- T Temporary mark 0.5 NM SE of Pt. Jefferson
- V Temporary mark 0.3 NM NNE of Wing Pt.
- W West Pt. Buoy (LL #16805)



Race Committee Boat - Portage Bay

## Tri-Island Series - Notice of Race SYC Protection Island Race

**Date:** Starts April 29, 2017 (Saturday)

**Location:** Northern Puget Sound, Admiralty Inlet, and southeastern Straits of Juan de Fuca. The starting line and finishing line will be in Shilshole Bay between Meadow Point and West Point.

**Course:**

Long Course: Start by leaving the starting mark buoy to port, round Protection Island to starboard, and finish by leaving the finishing mark buoy to port.

Short Course: Start by leaving the starting mark to port, round Double Bluff Lighted Buoy 1 (LL #16525) to port, and finish by leaving the finishing mark to port.

Sport Boat Course: Same as short course (scored separately).

Cruiser/Racer Course:

Start by leaving the starting mark to port, round **Scatchet Head Lighted Gong Buoy (LL#16555)** to port, and finish by leaving the finishing mark to port.

**Time of First Warning:** 0900

**Time Limits:**

Long Course: 30 hours

Short Course / Sport Boat Course: 14 hours

Cruiser/Racer Course: 9 hours

**Classes to Race:** ORC, IRC, PHRF-NW, including Cruiser/Racer, and one-design keelboat.

**Equipment Requirement Category:**

<b>Long Course:</b>	SER Coastal or OSR 3
<b>Short Course/Sport Boat Course:</b>	SER Inshore or OSR 4
<b>Cruiser/Racer Course:</b>	SER Inshore or OSR 4

Other Provisions:

- Notice of Race amended by the SYC General Notice of Race.
- The short course is available to boats rating 75 and slower. The sport boat course is open to boats 33 feet or less rating faster than 75.
- A shortened course option will be available for boats that take their time at a designated shortened course option finishing line. Boats using the shortened course option will be considered finishers and will be scored in class and overall based on their time and the distance for the shortened course starting immediately behind boats finishing the full course.
- This race is part of the SYC Tri-Island Series. There will be no scoring exclusions for the series. This changes RRS A2.

**Awards:** 1<sup>st</sup> overall on each course. For the Tri-Island Series, 1<sup>st</sup> overall per course and 1<sup>st</sup>, 2<sup>nd</sup>, 3<sup>rd</sup> in class. Awards will be presented at the awards party.

**Series Awards Party**

**[The Tri-Island Series Awards Party after the Blake Island Race on June 3rd will be at the Seattle Yacht Club Elliott Bay Outstation at Elliott Bay Marina from 3 to 9 PM.](#)**

**Registration Deadline:** April 27, 2017 (Thursday)

**Registration Fee:** \$70 (or \$180 for SYC Tri-Island Series)

**Regatta Chair:** Rhonda Halfman, [rhondaha@gmail.com](mailto:rhondaha@gmail.com)



Seattle Yacht Club hosts Jr. Olympics Regatta

## Notice of Race SYC Mark Mayer Opening Day Race

**Date:** May 7, 2017 (Sunday)

**Location:** Lake Washington north of the SR-520 Bridge. The start and finish will be in the area between Webster Point, Hunts Point, and Sand Point.

**Course:** The courses will be as designated in the Sailing Instructions.

**Time of First Warning:** 1200

**Time Limit:** 5 hours

**Classes to Race:** ORC, IRC, PHRF-NW, or any One-Design or other classes of at least five boats may apply.

**Equipment Requirement Category:** SER Nearshore or OSR 5 One-design classes shall comply with their class rules.

**Other Provisions:** Notice of Race amended by SYC Notice of Race Addendum.

**Awards:** 1<sup>st</sup>, 2<sup>nd</sup>, and 3<sup>rd</sup> place in class, plus other awards as deemed necessary!!

**Social Activities:** Party immediately after the race at Seattle Yacht Club in the Heritage Room and on the adjacent lawn.

**Registration Deadline:** 6pm, May 6, 2017 (Saturday)

**Registration Fee:** Free!

**Regatta Chair:** Naomi Medley, [naomi.medley@comcast.net](mailto:naomi.medley@comcast.net)

## Notice of Race

### SYC Tri-Island Vashon Island Race

**Date:** May 13, 2017 (Saturday)

**Location:** Puget Sound. The starting line and finishing line will be in Shilshole Bay between Meadow Point and West Point.

**Course:**

Long Course: Start by leaving the starting mark buoy to port, round Maury Island and Vashon Island to starboard, and finish by leaving the finishing mark buoy to port.

Short Course: Start by leaving the starting mark buoy to port, round a temporary buoy north of Point Robinson at approximately 47° 24.0' N, 122° 23.0' W (47.400N 122.383W) to port, and finish by leaving the finishing mark buoy to port.

Sport Boat Course: Same as short course (scored separately).

Cruiser/Racer Course: Start by leaving the starting mark buoy to port, round Blakely Rock (LL #16830) "K" to port. Round Duwamish Head Lt. (LL #16910) "D" to port, and finish by leaving the finishing mark buoy to port.

**Time of First Warning:** 0900

**Time Limit:**

Long Course: 19 hours

Short Course / Sport Boat Course: 14 hours

Cruiser/Racer Course: 9 hours

**Classes to Race:** ORC, IRC, PHRF-NW. Other classes of at least five boats may apply.

**Equipment Requirement Category:**

**Long Course:** SER Coastal or OSR 3

**Short Course / Sport Boat Course:** SER Nearshore or OSR 5

**Cruiser/Racer Course:** SER Nearshore or OSR 5

**Other Provisions:**

- Notice of Race amended by SYC Notice of Race Addendum.
- The short course is available to boats rating 75 PHRF and slower. The sport boat course is open to boats 33 feet and less rating faster than 75.
- A shortened course option will be available for boats that take their time at a designated shortened course option finishing line. Boats using this option will be considered finishers and will be scored in class and overall based on their time and the distance for the shortened course starting immediately behind boats finishing the full course.
- This race is part of the SYC Tri-Island Series. There will be no scoring exclusions for the series. This changes RRS A2.

**Awards:** 1<sup>st</sup> overall on each course. For the Tri-Island Series, 1<sup>st</sup> overall per course and 1<sup>st</sup>, 2<sup>nd</sup>, 3<sup>rd</sup> in class. Awards will be presented at the awards party.

**Series Awards Party**

**The Tri-Island Series Awards Party after the Blake Island Race on June 3rd will be at the Seattle Yacht Club Elliott Bay Outstation at Elliott Bay Marina from 3 to 9 PM.**

**Registration Deadline:** May 11, 2017 (Thursday)

**Registration Fee:** \$70 (or \$180 for SYC Tri-Island Series)

**Regatta Chair:** Rhonda Halfman, [rhondaha@gmail.com](mailto:rhondaha@gmail.com)



Tri-Island Series consist of three distance races of varying lengths with individual race winners and Overall series champions.

## Notice of Race

### SYC Tri-Island Blake Island Race

**Date:** June 3, 2016 (Saturday)

**Location** Puget Sound. The starting line will be in Shilshole Bay between Meadow Point and West Point. The finishing line will be in the northern part of Elliott Bay off the Elliott Bay Marina breakwater.

**Course:**

Long Course: Start by leaving the starting mark buoy to port, round Blake Island to port or starboard, round a temporary mark approximately 0.3 NM SSE of West Point Lighted Buoy 1 (LL #16805) at approximately 47° 39.3' N, 122° 26.4' W (47.655N 122.440W) to starboard, and finish by leaving the finishing mark buoy to starboard.

Short Course: Same as long course.

Sport Boat Course: Same as long course (scored separately).

Cruiser/Racer Course: Start by leaving the starting mark buoy to port, round Blakely Rock ("K") to port, round a temporary mark approximately 0.3 NM SSE of West Point Lighted Buoy 1 (LL #16805) at approximately 47° 39.3' N, 122° 26.4' W (47.655N 122.440W) to starboard, and finish by leaving the finishing mark buoy to starboard.

**Time of First Warning:** 0900

**Time Limits:**

Long Course:	Earlier of 8 hours or 1900
Short Course / Sport Boat Course:	Earlier of 8 hours or 1900
Cruiser/Racer Class Course:	Earlier of 8 hours or 1900

**Classes to Race:** ORC, IRC, PHRF-NW. Other classes of at least five boats may apply.

**Equipment Requirement Category:** SER Nearshore or OSR 5

**Other Provisions:**

- Notice of Race amended by SYC Notice of Race Addendum.
- The short course is available to boats rating 75 PHRF and slower. The sport boat course is open to boats 33 feet and less rating faster than 75.
- A shortened course option will be available for boats that take their time at a designated shortened course option finishing line. Boats using the shortened course option will be considered finishers and will be scored in class and overall based on their time and the distance for the shortened course starting immediately behind boats finishing the full course.
- This race is part of the SYC Tri-Island Series. There will be no scoring exclusions for the series. This changes RRS A2.

**Awards:** 1<sup>st</sup> overall on each course. For the Tri-Island Series, 1<sup>st</sup> overall per course and 1<sup>st</sup>, 2<sup>nd</sup>, 3<sup>rd</sup> in class. Awards will be presented at the awards party.

## **Series Awards Party**

**The Tri-Island Series Awards Party** after the Blake Island Race on June 3rd will be at the **Seattle Yacht Club Elliott Bay Outstation** at Elliott Bay Marina from 3 to 9 PM.

**Registration Deadline:** June 1, 2017 (Thursday)

**Registration Fee:** \$70 (or \$180 for SYC Tri-Island Series)

**Regatta Chair:** Rhonda Halfman, [rhondaha@gmail.com](mailto:rhondaha@gmail.com)



Tri-Island Series Party at the Elliott Bay Marina clubhouse



## **Race Information**

### **41st Annual Grand Prix Regatta**

*Note: This is an informal announcement, not a Notice of Race, and is not part of the rules of the event. For more information, please see the Notice of Race at [www.seattleyachtclub.org/regattas](http://www.seattleyachtclub.org/regattas).*

**Dates:** October 27-29, 2017 (Friday, Saturday, and Sunday)

**Location:** The racing area is Puget Sound north of Alki Pt. and south of Pt. Wells. The starting line will be in the vicinity of Shilshole Bay and the area north of Meadow Point.

**Course:** The racing will be a mix of long buoy races, or middle distance point to point races. One or more buoy or mid-distance races may be sailed each day, based on wind conditions. The courses will be as designated in the Sailing Instructions.

#### **Scheduled Time of First Warning:**

Friday: 1300  
Saturday and Sunday: 1030

**Classes to Race:** IRC, ORC, PHRF-NW and one-design keelboats of at least 24 feet with at least five boats. Other classes may apply at the discretion of the organizing authority. Monohulls and multihulls will race in separate classes. There will be no Cruiser-Racer Class.

**Equipment Requirement Category:** SER Nearshore or OSR 5 One-design classes shall comply with their class rules.

#### **Other Provisions:**

- Qualifying Events – Only boats that qualify based on their performance in selected races in the prior year and are invited, at the discretion of the organizing authority, will be eligible to register. Boats may also qualify at the discretion of the organizing authority. For more information, see the Qualifying Events section, below.
- One Design Fleets – A whole one-design class may qualify if several boats of the class have qualified and can register a number of boats suitable for a one design class start. For more information, please contact the regatta organizers listed below.
- Permanent trophy recognition will be awarded for each class.
- The race committee will have on-the-water discretion to run one or more races each day with an emphasis on buoy courses.

**Awards:** 1<sup>st</sup>, 2<sup>nd</sup>, and 3<sup>rd</sup> place in class

**Social Activities:** There will be parties after racing each day, location TBD. The awards dinner will be after racing on Sunday at Seattle Yacht Club.

**Registration Deadline:** October 25, 2017 (Wednesday)

#### **Registration Fee (based on boat length):**

Under 30': \$175  
30' to under 40': \$225  
40' and over: \$275

**Chairpersons:** Regan Edwards, [rledwards35@gmail.com](mailto:rledwards35@gmail.com)

## **Qualifying Events:**

The following events are qualifiers in racing classes with at least four boats registered:

### **Seattle Yacht Club Events (1st, 2nd or 3rd in class)**

SYC Tri-Island Series and races:	SYC Mark Mayer Regatta
SYC Smith / Protection Island Race	
SYC Vashon Island Race	SYC Star & Bar Regatta
SYC Blake Island Race	SYC Grand Prix Regatta (prior year)

### **Other Events (1st, 2nd, or 3rd in class)**

SSSS South Sound Series and races:	WVYC Southern Straits
TYC Vashon Island	CYC PSSR
TTPYC Duwamish Head	RVicYC Swiftsure (S,CF,UCF,JF,UJF)
OYC Toliva Shoal	Whidbey Island Race Week
GHYC Islands	CBSA Cowichan Bay Regatta
CYC Center Sound Series and races	Van Isle 360
CYC Blakely Rock	RVanYC/LYC Vic-Maui
CYC Scatchet Head	CYC PSSC
CYC Three Tree Point	OIYC Round the County

### **Other Events (1st in class)**

STYC Iceberg	RVanYC Easter Seals Regatta
RVanYC VARC Opener	NYC SIN
STYC Blakely Rock Benefit	
RVicYC THRASH	AYC Northern Century
FCYC VARC Spring	BYC PITCH
SBYC/STYC Ballard Cup Series (I-III)	MBYC Maple Bay Regatta
STYC Race to the Straits	SBYC Trans-Puget
SISC Round Saltspring	CYCE Foulweather Bluff
Sail Northwest J-Fest	STYC Fall
RVanYC WAVES	

## SYC Deception Class Mini-12 Fleet

With twenty active boats and over 175 races every year, the Seattle Yacht Club Deception Class Mini-12 Fleet is the most active One Design fleet in the Pacific Northwest!

The Deception, built in Victoria B.C., is a 13' sloop designed by two Royal Victoria Yacht Club members to about one-fifth the scale of the 1980's America's Cup yachts. We have forty members as individual boat owners or in boat partnerships, which is a practical way to keep the costs down and get all the boats out for the regattas.

Every year we have seven series consisting of five regattas each. And with our friends at Royal Victoria Yacht Club and their ten boats, our two clubs alternate as host for an annual Inter-Club Team Race Regatta. The Interclub Regatta will be held at Royal Vancouver Yacht Club, April 8 - 9, 2017.



Mini-12's racing on Portage Bay

No regattas are held in July and August, when some members go on vacation or cruising. To accommodate our members who leave town for skiing or golfing, we score our Fleet Championship using their best five series. Each of our ownerships teams will act as race committee for about two regattas per year.

The Mini-12's rest upon yard trailers aboard two barges at the inshore end of Dock 3 at SYC. These barges are equipped with an electric hoist to make launch and recovery easy. Take a close look at the boats and picture getting out racing on Portage Bay as captain and crew! The Mini-12 fleet is a great place to get started in your sailing career and learn from many of the regions finest and most experienced sailors.

Contact Fleet Captain [Robert Hale](#) to come out for a sail.

## SYC Deception Class 2017 schedule

Date	Day	Time	Event	Race Committee
<b>JANUARY</b>				
1/8/2017	Sunday	2:00	Winter Series, Regatta 5	USA 6
1/15/2017	Sunday	2:00	Late Winter Series, Regatta 1	USA 7
1/22/2017	Sunday	2:00	Late Winter Series, Regatta 2	USA 8
1/29/2017	Sunday	2:00	Late Winter Series, Regatta 3	USA 9
<b>FEBRUARY</b>				
2/5/2017	Sunday	2:00	Late Winter Series, Regatta 4	USA 10
2/12/2017	Sunday	2:00	Late Winter Series, Regatta 5	USA 11
2/19/2017	Sunday	2:00	Spring Series, Regatta 1	USA 13
2/26/2017	Sunday	2:00	Spring Series, Regatta 2	USA 14
<b>MARCH</b>				
3/5/2017	Sunday	2:00	Spring Series, Regatta 3	USA 15
3/12/2017	Sunday	2:00	Spring Series, Regatta 4	USA 16
3/19/2017	Sunday	2:00	Spring Series, Regatta 5	USA 17
3/26/2017	Sunday	2:00	Team Racing Practice 1	USA 18
<b>APRIL</b>				
4/2/2017	Sunday	2:00	Team Racing Practice 2	USA 19
4/8/2017	Saturday	6:00	Interclub Team Racing RVYC	RVYC
4/9/2017	Sunday	6:00	Interclub Team Racing RVYC	RVYC
4/12/2017	Wednesday	6:00	Late Spring Series, Regatta 1	USA 20
4/19/2017	Wednesday	6:00	Late Spring Series, Regatta 2	USA 21
4/26/2017	Wednesday	6:00	Late Spring Series, Regatta 3	USA 24
<b>MAY</b>				
5/3/2017	Wednesday	All Day	No Racing	
5/5/2017	Thursday	6:00	Canadian Exchange Regatta	TBD
5/6/2017	Saturday	2:00	Opening Day	
5/11/2017	Wednesday	6:00	Late Spring Series, Regatta 4	USA 1
5/18/2017	Wednesday	6:00	Late Spring Series, Regatta 5	USA 2
5/25/2017	Wednesday	6:00	Summer Series, Regatta 1	USA 3
<b>JUNE</b>				
6/7/2017	Wednesday	6:00	Summer Series, Regatta 2	USA 4
6/14/2017	Wednesday	6:00	Summer Series, Regatta 3	USA 5
6/21/2017	Wednesday	6:00	Summer Series, Regatta 4	USA 6
6/28/2017	Wednesday	6:00	Summer Series, Regatta 5	USA 7
<b>JULY</b>				
7/5/2017	Wednesday		No Racing – Happy 4 <sup>th</sup> of July!!	
7/12/2017	Wednesday	6:00	Summer Fun Series, Regatta 1	TBD
7/19/2017	Wednesday	6:00	Summer Fun Series, Regatta 2	TBD
7/26/2017	Wednesday		No Racing	
<b>AUGUST</b>				
8/2/2017	Wednesday		No Racing	
8/9/2017	Wednesday		No Racing	
8/16/2017	Wednesday	6:00	Summer Fun Series, Regatta 3	TBD
8/23/2017	Wednesday	6:00	Summer Fun Series, Regatta 4	TBD
8/30/2017	Wednesday	6:00	Summer Fun Series, Regatta 5	TBD
<b>SEPT/OCT</b>				
9/10/2017	Sunday	3:00	Fall Series, Regatta 1	USA 8
9/17/2017	Sunday	3:00	Fall Series, Regatta 2	USA 9
9/24/2017	Sunday	3:00	Fall Series, Regatta 3	USA 10
10/1/2017	Sunday	3:00	Fall Series, Regatta 4/Fleet Mtg	USA 11
10/8/2017	Sunday	3:00	Fall Series, Regatta 5	USA 12

# SYC Sailboat Cruising Program

Cruising events are for members of Seattle Yacht Club, except as noted.

- Overview of Sailboat Cruising Events
- Winter and Spring Power/Sail Mini Cruises
- Leukemia Cup
- Cruise & Snooze
- NORPAC

## Overview of Sailboat Cruising Events

### Winter and Spring Power/Sail Mini Cruises

These early-season cruises are open to all SYC boaters, power and sail. Each cruise starts off Shilshole on a Saturday and goes to a nearby destination. AI's are encouraged to attend; kids welcome. IF there are small craft warnings, the cruise will be cancelled. There is no charge for Mini-Cruises and they are a terrific way to get a jump on the season and enjoy time on the water with your friends.

### Leukemia Cup

Seattle Yacht Club is a proud participant in the annual Leukemia Cup Regatta to benefit the Leukemia and Lymphoma Society with a casual race in Elliott Bay and tropical themed auction party. This event is open to everyone. We typically raise \$125,000 to \$150,000 in the name of the Seattle area boating and sailing community. Come take part in doing something fun and good with our sport and join the 80 or so boats and 300 people at the party at Elliott Bay Marina to enjoy the food and drink, the band, the games, and the good company!

### Cruise & Snooze and Sailboat Rendezvous

This time-honored cruising event is ideal for families. With a reverse start and non-flying sails, everyone is guaranteed to have a great time and the racing is optional. Come and enjoy the company of your SYC sailing friends at a casual event. Spend the night at Port Madison and race back the next day.

### Commodore's Cruise and Sunshine Coast Cruise

Join friends, and make some new ones, on the week-long Commodore's Cruise from Henry Island to Ovens Island, with casual races most days and overnight stops along the way. Follow it up the week after with the Sunshine Coast Cruise from Ovens to the doorstep of Desolation Sound, with interesting anchorages along the way.

## Winter and Spring Power/Sail Mini Cruises

OK boaters here is the POWER/SAIL Mini Cruise schedule. AI's are encouraged to attend; kids welcome. If there are small craft warnings, the event is cancelled.

This is classified semi-official non-event event which means there is no charge for TONS of fun and adventure.

Greenbox usually starts around 1730. Dinner is potluck or at a local restaurant as below. Bring an appetizer for the Greenboxes, and something to share for the potlucks.

**Registration Deadline:** For information or to sign up, e-mail or phone the chairperson by 1800 on the Friday before each cruise.

**Chairpersons:** Christina Marie Kimball, [ChristinaMarieKimball@gmail.com](mailto:ChristinaMarieKimball@gmail.com)

<u>Date</u>	<u>Destination</u>	<u>Dinner</u>
January 7-8	Port Madison	Potluck dinner
February 4-5	Bell Harbor	Anthony's
March 4-5	Eagle Harbor	Doc's
April 8-9	Blake Island	Potluck dinner
May 27-29	Poulsbo	Dinner at Italian restaurant

## Leukemia Cup Regatta

### *Let's do something good with our great sport!*

Seattle Yacht Club is a proud participant of the annual Leukemia Cup Regatta. There are plenty of worthy causes and top charities. Whether or not it's our particular personal cause, the point is to pick one for our community that fits with our style and is big enough to be noticeable and widely appreciated, and focus what we can do together.

The party at Elliott Bay Marina had over 300 people who enjoyed the food, the rum, the band, and the games. Our efforts over the last nineteen years, here and across the country, have raised over thirty-eight million dollars!

Boat owners and crew can participate just by registering and showing up for the casual format sailboat regatta and/or the party that evening. If interested, we'll attempt to match you with patients and their families to be your guests on the water for a much appreciated getaway. You will feel like you did something just by sharing what you're already doing.



**Date:** June 10, 2017 (Saturday)

### **Location and Schedule (all at Elliott Bay Marina):**

Registration	1000 – 1300 (SYC station at Elliott Bay Marina)
Skipper's Meeting	1245 (SYC station at Elliott Bay Marina)
Regatta	1400 - 1700
Party	1700 - 2130

Elliott Bay Marina has offered free guest moorage for Friday and Saturday nights. Boats will likely be assigned to raft on the east side of dock N. Please contact the marina for availability and assignment at 206-285-4817 or VHF 78A.

**Course:** Two laps in Elliott Bay. Everyone is welcome to race or cruise.

**Registration Donation:** \$150 to the Leukemia and Lymphoma Society (includes two party tickets). Additional party tickets \$25.

**Registration:** Please register online at [www.leukemicup.org/wa](http://www.leukemicup.org/wa)

**SYC Contact:** Rhonda Halffman, 425-246-3612, [rhondaha@gmail.com](mailto:rhondaha@gmail.com)

# SYC Sailboat Rendezvous & SYC Cruise & Snooze

## Power boaters encouraged to attend

Sailboat Rendezvous is about SYC sailboat community with family events, please meet over at Pt Madison Saturday for the event. Cruise & Snooze is a fun race over to Port Madison, spend the night, and sail back the next day. No flying sails. Pursuit format starts so fewer boats start together. Super green box. Potluck dinner with more than enough to eat. Kids welcome.

### Date:

Races A/B (Saturday/Sunday): June 24 – 25, 2017  
Races C/D (Saturday/Sunday): September 9-10, 2017

**Location:** Puget Sound in the vicinity of Shilshole Bay. The start will be off Shilshole on Saturday and off Point Monroe on Sunday.

**Course:** The courses will be cruiser/racer and announced prior to racing.

### Time of First Warning:

Races A and C (Saturdays): 1100  
Races B and D (Sundays): 1200

**Time Limit:** 1700 each day

**Classes to Race:** Sailboats! Though helpful, you do not need a PHRF-NW rating to race. Performance handicaps will be assigned for this event as necessary.

### Other Provisions:

- Notice of Race amended by SYC Notice of Race Addendum.
- No spinnakers or other flying sails may be used. Only one working sail may be flown on its stay at any time, except during sail changes.
- All races will be pursuit format with handicaps applied at the start.
- SYC members only event.

**Awards:** Special awards will be made at the conclusion of each Saturday race. Recipients will be selected by the chairpersons. The Cruise & Snooze Cannon Trophy will be awarded to the series overall winner.

**Social Activities:** GreenBox at 1700 on Saturday after racing. Dinner will follow at 1830. Main course is provided. When you sign up to attend, please let the front desk know whether you will bring a main dish, salad, or dessert for twelve people. A logger's breakfast will be served at 0800 on Sunday morning.

### Registration Deadline:

Races A/B (Saturday/Sunday): June 22, 2017 (Thursday)  
Races C/D (Saturday/Sunday): September 7, 2017 (Thursday)

**Registration Fee:** \$50 for A/B, \$50 for C/D. The fee provides for two adults per boat and \$15 extra for each additional adult on board to help pay for food. No charge for kids.

**Event Chairs:** Diane Haelsing, (425) 747-9822, [diane@haelsing.com](mailto:diane@haelsing.com)  
Phil Calvert, 206-910-7977, [phil.calvert@comcast.net](mailto:phil.calvert@comcast.net)



## Commodore's Cruise (San Juan and Gulf Islands)

The Commodore's Cruise is a power and sail event! Tons of fun! Starts at Henry Island and ends at Oven's Island.

**Dates:** July 16 to July 21, 2017 (Sunday to Friday)

Sunday	Greenbox at Henry Island 1730 w/event schedule and info
Monday	Race #1 to Sydney, huge greenbox at Sydney Marina
Tuesday	Race #2 to Ganges, greenbox at outstation
Wednesday	Lay day, star raft in Montague Harbor
Thursday	Race #3 to Oven's Island, awards, barbeque, prizes
Friday	Lead sinker pancake breakfast

**Registration:** Please register by June 15 at the front desk at SYC.

**Chairpersons:** Phil Calvert, 206-910-7977, [phil.calvert@comcast.net](mailto:phil.calvert@comcast.net)

## Sunshine Coast Cruise (British Columbia)

This is a power and sail event. Destinations and anchorages selected will be weather dependent and large enough to accommodate all boats safely. Be prepared to anchor in 10 fathoms of water. We will raft as much as we can. This is an EXTREMELY COOL semi-official non-event event, meaning there is no charge.

This cruise starts after the Commodore's Cruise at Ovens Island and ends on the doorstep to Desolation Sound at the Cortes Island outstation. We will visit places around the Straits of Georgia rarely seen by SYCers like Lasqueti Island, Hornby Island, Comox, and Savary Island. Guests may arrive or depart by scheduled air service at Nanaimo and Comox. You can join or leave the cruise at any point.

**Dates:** July 22 to July 28, 2017 (Saturday to Friday, be prepared to be flexible)

Saturday	From Ovens Island to Nanaimo. Greenbox on <i>Panther</i> .
Sunday	Depart Nanaimo for Lasqueti. Greenbox.
Monday	Depart Lasqueti for Tribune Bay. Greenbox.
Tuesday	Lay day.
Wednesday	Depart Hornby for Comox Marina via Baynes Sound.
Thursday	Depart Comox for Savary Island or Gorge Harbor.
Friday	Depart Savary Island or Gorge Harbor for Cortez Island.

**Chairpersons:** Chris Warner and Pam Murray, 206-782-1277, [panther@seanet.com](mailto:panther@seanet.com)

# SYC Sailing School and Junior Race Team

The Sailing School and Junior Race Team offer small boat sailing for members and guests of all ages with an emphasis on junior sailing development.

## Summer Sailing School

The Seattle Yacht Club has a long-standing tradition of providing an outstanding Junior Sailing School program for children in the Seattle area. We offer classes for children from 7-18 years of age with a wide variety of class options. Over 600 young sailors participate in a total of 40 classes over a ten week period each summer. The instructional staff is trained through US SAILING, and CPR and First Aid certified.

This year's program will run from June 19 through September 1, 2017. Classes run from 9:00 AM - 4:00 PM, Monday through Friday. Students can sign up for a week at a time, and for multiple weeks during the summer!!



Opti sailing in Portage Bay

**Member Registration:** SYC Members will be able to register from March 20-21 online, via mail, or in person. After this period, the policy will be first-come, first-served whether member or non-member. We ask that you use your SYC membership number for billing purposes. Member prices include members' children, grandchildren, and junior members.

**Non-member Registration:** Guest registration will begin on Wednesday, March 22 from 8:30 AM – 4:30 PM, both on-line and in the Sailing Office, located near the south entrance to the Seattle Yacht Club Portage Bay clubhouse. Class availability will be on a first come, first-served basis. Registrations will also be accepted online and via mail, or email.

## Seattle Yacht Club Junior Race Team

The SYC Race Team invites all young sailors to join in the fun, support, friendships, and camaraderie that develop from being a part of a nationally competitive sailing team. SYC Race Team sailors can take part in scheduled practices and enjoy support from our coaching crew at seven regional regattas. Advanced sailors compete in both national and international events, and over the years, the SYC program has helped in the development of many Olympic class sailors as well.

### Northwest Youth Race Circuit Schedule

#### Fleet Racing

- April 22 - 23 RVYC Kitten Cup Regatta, Vancouver, BC  
Contact: James McDonald ([sail\\_dir@royalvan.com](mailto:sail_dir@royalvan.com))
- June 24 - 25 Steve Williams Regatta, Portland, OR  
Contact: Dave Cannard ([dave@netequality.org](mailto:dave@netequality.org))
- July 1 - 2 CGRA WIND Youth Regatta, Cascade Locks, Oregon  
Contact: Jarvis Brecker ([jarvis@cgra.org](mailto:jarvis@cgra.org))
- July 15 - 16 Ray Jarecki Youth Regatta  
Contact: Burke Thomas ([orcassailingcoach@gmail.com](mailto:orcassailingcoach@gmail.com))
- Aug 5 - 6 Bellingham YC Ski to Sea Youth Regatta  
Contact: Scott Wilson ([scotjwilson@gmail.com](mailto:scotjwilson@gmail.com))
- Aug 26 - 27 SYC Northwest Junior Olympics  
Shilshole Bay Marina, Seattle, Washington  
Contact: Brian Ledbetter ([brianl@seattleyachtclub.org](mailto:brianl@seattleyachtclub.org))
- Sept 9 - 10 Jonny Adams Memorial Regatta, Port Madison, Washington  
Contact: Stephanie Ahlquist ([stephofcourse@aol.com](mailto:stephofcourse@aol.com))
- Sept 16 - 17 CYC/SSP Octoberfest, Seattle, Washington (Sand Point)

#### Team Racing

- Aug 12 - 13 McCurdy Cup Jr. Team Race Championship  
Hosted by Seattle Yacht Club at Sail Sand Point  
Contact: Cameron Hoard([choard@gmail.com](mailto:choard@gmail.com))

## Tuesday Night Sailing

Come to the Seattle Yacht Club on Tuesday Nights in the summer for sailing, casual races, dinner and games on the lawn! All of the small sailboats are available for SYC members and their guests, as well as members of the Race Team. Sailing Instructors will be on hand to assist participants on and off the water. Younger sailors are encouraged to pair up with parents or older Race Team members!! Sailing runs Tuesdays, June 20 to August 29, 5:00 to 7:00 PM. Taco/Burrito bar dinner at 7:15 on the lawn, or order from the menu upstairs and take out to the lawn.

## High School Sailing at SYC

To help promote High School Sailing in Seattle and create a place for graduates of our sailing school to begin participating in the sport, we are now offering a membership to the SYC Race Team for the High School season.



Vanguard 15: multi-purpose, double-handed one design (fun too)

This program is open to all kids from 7th- 12th grade and does not require your school to form a team. We will mix and match sailors from all schools. Opti sailors are welcome to practice, but might not meet the grade requirement to race. This year we are providing practices at SYC twice a week during the spring season from March till late May. This will also include coaching at many local events (check <http://www.nwisa.hsssailing.org> for the most up-to-date schedule).

## Opti Green Fleet Program

Interested in taking the first step to becoming a racer? The Opti Green Fleet is the best place to start for kids ages 8-13. The group meets each summer on Thursday evenings from 5:00 to 7:30 at SYC on Portage Bay. Using our club boats, you will learn the basics of racing, advanced rigging, and boat handling. A coach will also be on hand at three local regattas. Once you feel ready to head out to Shilshole and sail with the regular Opti Team, your fee can be forwarded toward the regular Race Team annual fee.

## Adult Sailing Courses

Seattle Yacht Club's adult sailing sessions offer an excellent way to get out on the water and learn the basics of small boat sailing. Using the club's Vanguard-15's, 420's, Lasers, and J/22's the classes start with the basics including rigging, points of sail, sail trim, boat-handling, and boating safety. Students develop their skills

through on-the-water sessions, “chalk talk” discussions, and work in textbooks. Classes are open to all levels, and advanced sessions are offered for more experienced sailors ready to learn racing tactics.

## Private Sailing Lessons

Enjoy the individual attention and customized instruction of private lessons at Seattle Yacht Club. Whether you're looking to learn from scratch, refresh your basic sailing skills, or learn more advanced techniques, private lessons provide the opportunity to learn what you want when you want.



J/22 on Lake Union

## The Small Boat Fleet at SYC

SYC is committed to our program to grow boating with the acquisition and maintenance of our small boat fleet and support boats, including twenty Lasers, twenty-nine Optimists, two 29ers, twelve Vanguard 15's, six 420's, six J/22's, five Avon inflatables, six Boston Whalers, one Grady White, and the 40' m/v *Portage Bay* trawler.

The **Optimist** is an eight foot, kid-sized single-handed dinghy that is easy to manage and fun to sail.

The **Vanguard-15** is the primary training boat at SYC. This stable, double-handed boat with a main and jib is the national standard for novice and advanced sailors to master the basics and to develop teamwork.

The Olympic-Class **Laser** is a high performance single-handed dinghy for intermediate and advanced sailors. It is a great platform to build boat-handling and racing skills. This boat has two different size sails, allowing us to tailor the boat to the weight of the sailor.

The **420** is an ideal entry-level training boat for all ages. This is a double-handed boat with main and jib. Advanced sailors can rig the spinnaker and trapeze for an exhilarating thrill.

The **J/22** fleet is a closely match set of 6 keelboats available to all SYC members for a small usage fee. Match Racing, Team Racing, one-design regattas, or an afternoon sail are all perfect uses for our new fleet.



## Sailing Office Contact Information

The Sailing Office is located at the SYC Portage Bay clubhouse on the bottom floor near the south entrance. Please contact the Sailing Office personnel for any questions or information.

Brian Ledbetter, Sailing Director

[brianl@seattleyachtclub.org](mailto:brianl@seattleyachtclub.org)

Angela Frost, Sailing Programs Coordinator

[angela@seattleyachtclub.org](mailto:angela@seattleyachtclub.org)

Cameron Hoard, Race Team Coach

[choard@gmail.com](mailto:choard@gmail.com)

Phone: 206-926-1011

# Awards and Recognition

Thank you and congratulations to everyone who volunteered and competed.

## Junior Sailing Awards

<u>Trophy</u>	<u>Event</u>	<u>Recipient</u>
Bill Burdick Trophy	Junior Sailor of the Year	Talia Toland
Ernest Gann Award	Outstanding Jr. Instructor	Danielle Erjavec
Captain Lovejoy Trophy	Most Improved Sailor	Deiter Creitz
Joe Duthie Trophy	Top Girl- Jr. Olympics	Megan Skene
Stimson Trophy	Top Boy – Jr. Olympics	Owen Timms
Brent Nichols Trophy	Outstanding Sportsmanship / Inspirational Sailor	Jack Carroll
Larry McCarthy Trophy	Perseverance	Audrey Prewitt
Club Championship	Top Crew	MirMattia Ottaviani
	Top Skipper	Talia Toland

## Outstanding Achievement in Sailing

<u>Trophy</u>	<u>Event</u>	<u>Recipient</u>
Outstanding Cruising Family Trophy	Cruising Sailboat of the Year	<i>Gypsy Wind - Alex and Christina Marie Kimball</i>
Ruptured Eardrum Trophy	Outstanding Race Committee Member	Ed Snyders
Bob Gibbons Trophy	One-Design Sailor of the Year	Talia Toland
Lake Union Sailing Trophy	Outstanding Crew Member	Ben Glass and crew of Jungle Kitty, R2AK
Golden Potlatch Trophy	Outstanding Cruiser/Racer	<i>Puffin,</i> Jim Medley
Kelly O'Neil Henson Trophy	Best SYC Swiftsure	<i>Joy Ride</i>
Bates McKee Memorial Trophy	Sailboat of the Year	<i>Joy Ride,</i> John Murkowski
Marymont Trophy	Sailor of the Year	Helena Scutt, 2016 Olympian
Perpetual Sailboat Trophy	William W. Heylman Memorial Award	No Nominations

# Appendix

In this section:

- Seattle Yacht Club Leadership Team
- Sailing Program Contacts

## Seattle Yacht Club Leadership Team

Commodore	Lynn Wingard
Vice Commodore	Tyler Ellison
Rear Commodore	John Van Duzor
Fleet Captain Sail	Rhonda Halfman
Junior Commodore	Tera Richardson
Junior Vice Commodore	Miranda O'Keefe
Junior Rear Commodore	Tim Mansker
Junior Secretary	Austin Baker
Junior Advisor	Dan Clarkson
Race Committee (as of prior year)	Roman Budzianowski, Phil Calvert, Pat Crockett, Bill Elmer, Dave Ferguson, Rhonda Halfman, Denny Johnson, Keith Johnson, Chuck Stephens, Brian Ledbetter, Angela Frost, Jim Medley, Warren Pawley, Charlie Pelly, Fred Pot, Karole Sherlock, Mike Sherlock, Leslie Keller Catherine Picha, Susan Weiss, Ed Snyders, Megan Sanford



## Sailing Program Contacts

Fleet Captain Sail	Rhonda Halfman	<a href="mailto:Rhondaha@gmail.com">Rhondaha@gmail.com</a>
Race Committee Chair	Chuck Stephens	<a href="mailto:Chuckstephens482@gmail.com">Chuckstephens482@gmail.com</a>
Racing Operations	Phil Calvert	<a href="mailto:Phil.Calvert@comcast.net">Phil.Calvert@comcast.net</a>
Cruising Director	Christina Marie Kimball	<a href="mailto:christinamarielimball@gmail.com">christinamarielimball@gmail.com</a>
Commodores Cruise	Phil Calvert	<a href="mailto:Phil.Calvert@comcast.net">Phil.Calvert@comcast.net</a>
Sunshine Coast Cruise	TBD	<u>TBD</u>
Protest Committee Chair	Jim Medley	<a href="mailto:jim.medley@comcast.net">jim.medley@comcast.net</a>
Race Scoring	Fred Pot Dave Ferguson Susan Weiss	<a href="mailto:FPot@comcast.net">FPot@comcast.net</a> <a href="mailto:Dave@clanfergus.net">Dave@clanfergus.net</a> <a href="mailto:balsuesails@gmail.com">balsuesails@gmail.com</a>
PHRF-NW Handicapper	Iain Christenson	<a href="mailto:iainchristenson@gmail.com">iainchristenson@gmail.com</a>
PIYA Representative	Keith Johnson	<a href="mailto:kjohnsonna@aol.com">kjohnsonna@aol.com</a>
Mini 12 Fleet Chair	Robert Hale	<a href="mailto:Surprise.37@hotmail.com">Surprise.37@hotmail.com</a>
T-37 Fleet Chair	Allan Van Ness	<a href="mailto:van.ness444@gmail.com">van.ness444@gmail.com</a>
J22 Fleet Captains	Phil Calvert Stuart Cavness	<a href="mailto:Phil.Calvert@comcast.net">Phil.Calvert@comcast.net</a> <a href="mailto:Stuart.Cavness@gmail.com">Stuart.Cavness@gmail.com</a>
Seattle Area Racing Council Representative	Brian Ledbetter	<a href="mailto:brianl@seattleyachtclub.org">brianl@seattleyachtclub.org</a>
US Sailing Association Representative	Chris Tutmark	<a href="mailto:chris.tutmark@gmail.com">chris.tutmark@gmail.com</a>
SYC Club Challenge Coordinator	TBD	TBD
SYC Sailing Director	Brian Ledbetter	<a href="mailto:brianl@seattleyachtclub.org">brianl@seattleyachtclub.org</a>
See Notices of Race for Regatta chairpersons.		



*Madrona* approaching West Point in the Vashon Island Race.

# Please thank our sponsors for supporting sailing through SYC



**Fisheries Supply**  
Marine Supplies Since 1928





[www.SeattleYachtClub.org](http://www.SeattleYachtClub.org)