



Seattle Yacht Club

Established in 1892

2015 Star North American Championship

Sponsored by CSR Marine

SAILING INSTRUCTIONS

1 Rules:

1.1 The regatta will be governed by the rules as defined in The Racing Rules of Sailing (RRS) except as any of these are modified by the Notice of Race and/or Sailing Instructions and any amendments thereto.

1.2 RRS Appendix P will apply. RRS Appendix P1 is changed to permit the hail to a protested boat to be either sail number or bow number.

1.3 The prescriptions of the national authority, US Sailing, that apply are stated in Paragraph 22.

1.4 For the purpose of safety, STCR 31.26 will be amended. The OA encourages all boats to carry a VHF radio aboard while racing for the purpose of receiving information from the Race Committee, or transmitting in case of an emergency. The Race Committee will attempt to notify all boats that are OCS by VHF radio on Channel 72, and may provide information regarding their intentions while on the water. Failure to do so by Race Committee shall not be grounds for redress. This changes RRS 62

2 Notices to Competitors:

2.1 Notices to competitors will be posted on the Official Notice Board located at the east entrance to the Corinthian Yacht Club clubhouse.

3 Crew Weight:

3.1 Crews must comply with class rule 31.1.3 prior to end of measurement, which is 1700 2 September 2015.

4 Changes in the Sailing Instructions:

4.1 Changes in the Sailing Instructions will be approved by the Jury and the Organizing Authority and will be posted before 0900 hours on the day they will take effect, except that any change in the schedule of races will be posted by 2000 hours on the day before it will take effect.

5 Signals Ashore:

5.1 Signals made ashore will be displayed from the flag pole on the Corinthian Yacht Club clubhouse.

5.2 Code flag "AP" when displayed ashore means that the start has been postponed. The Warning Signal will be made not less than 60 minutes after the lowering of the signal ashore. This changes RRS Race Signals.

6 Schedule:

6.1 Schedule of Measurement, Registration and Races;

Registration/Measurement/Weigh-in

Tuesday and Wednesday 1-2 September, 1000-1700

Regatta Schedule:

Wednesday 2 September –Practice Race - Time TBD

Thursday 3 September – Racing

Friday 4 September – Racing

Saturday 5 September – Racing

Sunday 6 September - Racing

6.2 The Race Committee may change the schedule. No more than 3 races per day may be sailed as per STCR 34.3.7, Format B. Only 1 race is scheduled for Sunday 6 September. This changes NOR 5.2.

6.3 The scheduled time of the warning signal for the first race each day is 1100.



Seattle Yacht Club

Established in 1892

6.4 No warning signal will be made after 1430 on Sunday 6 September. This changes NOR 5.2.

7 Class Flag:

7.1 The Class Flag will be a Silver Star on a white background.

8 Racing Area:

8.1 The racing area will be on the Puget Sound in the Shilshole Bay area and areas to the north of Meadow Point..

9 Course:

9.1 As outlined in Appendix 1 to these Instructions, Course “0”, “1”, “3”, or “4”, STCR 34.3, will be used. Format B STCR 34.3.7 will be used. The Race Committee signal boat will display the course number by placard to indicate the course.

9.2 The approximate compass bearing and distance from Mark 3 to Mark 1 will also be displayed on the Race Committee signal boat prior to or with the Warning Signal.

9.3 The courses will not be shortened. This changes RRS 32.

9.4 Lengths of legs of the course will not be changed after the Preparatory Signal, this changes RRS 33b.

10 Marks:

10.1 Marks will be 5’ green cone buoys, except as provided for in SI 10.2, 12.1 and 14.1

10.2 A new mark will be a 5’ yellow cone buoy. If a new mark is subsequently changed, it will be replaced with a mark of the original color

10.3 Mark 3 will be a single mark and not a leeward gate.

10.4 For Courses “3” and “4”, Mark 2 will be a red buoy.

10.5 At any mark beginning a downwind leg on courses “0” or “1”, the Race Committee may set an off-set mark. In that case, boats shall pass Mark 1 to port, and then round the off-set mark to port.

11 Check In:

11.1 Prior to the first Warning Signal of the first race a boat sails each day, boats shall sail past the stern of the Race Committee signal boat to be recorded. RRS A4.1 is changed to provide that boats not complying with this instruction will receive the same score as a boat not starting without a hearing. This also changes RRS 63.1 and A5.

12 The Start:

12.1 The starting line will be between the staff from which an orange flag is displayed on the Race Committee signal boat and a 5’ red cone buoy.

12.2 A boat not starting within 10 minutes after the Starting Signal will be scored DNS without a hearing. This changes RRS A4 and 63.1.

12.3 Boats hailed as OCS per SI 1.5 shall be identified by bow number or sail number. Failure of a boat to receive, failure of the Race Committee to hail, or the order that boats are hailed shall not be grounds for redress. This changes RRS 62.

12.4 A Race Committee boat displaying Code flag “G” may pass to windward of the fleet in the event of abandonment, postponement or general recall which means: “The Race Committee has signaled an abandonment, postponement or general recall. Boats are to return to the starting area immediately.”

12.5 A Race Committee boat displaying Code flag “X” positioned near Mark 1 will attempt to notify premature starters and will display their bow numbers.

12.6 A Race Committee boat displaying a black flag positioned near Mark 1 will attempt to notify boats that have been disqualified in accordance with RRS 30.3 and will display their bow numbers. Any boat notified that she has



Seattle Yacht Club

Established in 1892

been disqualified shall leave the race course immediately. However, if there are multiple races scheduled for that day, boats having been disqualified in a race may stand by in an area outside the race course for the subsequent race.

13 Change of Position of the Next Mark:

13.1 To change the position of the next mark, the race committee will lay a new mark (or move the finishing line) and remove the original mark as soon as practicable. The change will be signaled before the leading boat has begun the leg, although the mark may not yet be in position.

14 The Finish:

14.1 The finishing line will be between the staff from which an orange flag is displayed on a Race Committee boat and a 5' conical red buoy.

15 Time Limit:

15.1 The time limit will be as described in STCR 34.3.7 Format B. (40 minute maximum for first beat, 3 hour maximum time limit for the completed course.)

15.2 RRS 35, A4 and A5 is changed to provide that boats finishing more than 60 minutes after the first boat to finish will be scored "Did Not Finish" without a hearing.

16 Protests:

16.1 Protest forms are available in the Corinthian Yacht Club at the jury table. Protests shall be delivered there within the Protest Time limit.

16.2 Protests must be delivered within one hour of the Race Committee signal boat docking time. Protest Time will be posted on the Notice Board. The same Protest Time limit applies to all protests by the Race Committee and Jury about incidents they observe in the racing area and to request redress. This changes RRS 61.3 and 62.2.

16.3 Notices will be posted on the official notice board within 30 minutes of the Protest Time limit to inform competitors of hearings in which they are parties or named as witnesses. Hearings will be held on the lower level of the Corinthian Yacht Club at the time posted.

16.4 A list of boats that have been penalized for breaking RRS 42 will be posted as soon as possible after the protest time limit.

16.5 Boats recorded on the finishing list as having not started or not finished will be posted on the Notice Board 30 minutes before the end of Protest Time.

16.6 On the last day of racing a request for reopening a hearing shall be delivered:

- (a) Within the protest time limit if the requesting party was informed of the decision on the previous day;
- (b) No later than 30 minutes after the requesting party was informed

This changes RRS 66.

16.7 On the last day of racing a request for redress based on a jury decision shall be delivered no later than 30 minutes after the decision was posted. This changes rule 62.2.

16.8 The Penalty for breaking SI 11, 18.2, 19.1, 20, and 21 will be at the discretion of the jury. For SI 20 the penalty may be applied to all boats associated with the team or private support boat.

17 Scoring:

17.1 A boats series score will be the total of her race scores with her worst score discarded when five (5) or more races are completed. 7 races are scheduled, of which four (4) races shall be completed to constitute a series.

17.2 There will be a Master's Division for skippers aged 50 years and over by the start of the first race. Entrants in this division will be competing for both the Masters' Championship and the overall Championship.

17.3 There will be a Grand Master's Division for skippers aged 60 years and over by the start of the first race. Entrants in this division will be competing for both the Grand Masters' Championship and the overall Championship.



Seattle Yacht Club

Established in 1892

18 Liability and Safety:

18.1 The safety of a boat and her entire management, including insurance, shall be the sole and inescapable responsibility of the owner and/or entrant.

18.2 Competitors leaving the race course before the end of a race shall inform the Race Committee via VHF channel 72 or a mark boat as soon as possible. Competitors not leaving the dock on a race day shall inform the Race Committee via VHF channel 72, or call the Seattle Yacht Club front desk at 206.325.1000.

19 Crew Changes:

19.1 Any request for a change of crew must be submitted to the jury in writing prior to 0900 hours on the day of the race for which the change is to be made. If the jury grants permission, it will do so in writing and post such notice on the Notice Board.

19.2 A change of helmsman will not be permitted.

20 Team and Private Support Boats:

20.1 Coach boats will be required to register with the Organizing Authority.

20.2 Coach boats and private spectator boats are expected to render assistance to a boat in danger when requested by the boat, or at the request of the Race Committee or jury. Coaches and coach boats shall monitor VHF 72 at all times while on the water.

20.3 Team leaders, coaches and other support personnel shall stay 100 meters outside areas where boats are racing from the time of the Warning Signal until all boats have finished racing.

20.4 A yacht shall receive no outside assistance from support boats or otherwise once she has left the dock for the day until the finish of the last race of the day, except in the case of emergency and/or towing supplied by the organizer and available to all participants

20.5 The Penalty for breaking SI 20.1, 20.2, 20.3 or 20.4 will be at the discretion of the jury up to and including disqualification of all boats associated with the team or private support boat.

21 Haul out Restrictions:

21.1 All boats must be kept at the Shilshole Bay Marina North Dry Storage Compound commencing on 2 September 2015 at 1700 hours until the end of the Championship.

21.2 Boats will be assigned bow numbers. Trailers will be tagged and numbered with boat parking locations assigned using bow numbers

22 Prescriptions that apply:

22.1 After RRS 67 add:

US Sailing prescribes that:

- (a) A boat that retires from a race or accepts a penalty does not, by that action alone, admit liability for damages.
- (b) A protest committee shall find facts and make decisions only in compliance with the rules. No protest committee or US Sailing appeal authority shall adjudicate any claim for damages. Such a claim is subject to the jurisdiction of the courts.
- (c) A basic purpose of the rules is to prevent contact between boats. By participating in an event governed by the rules, a boat agrees that responsibility for damages arising from any breach of the rules shall be based on fault as determined by the application of the rules, and that she shall not be governed by the legal doctrine of "assumption of risk" for monetary damages resulting from contact with other boats.

22.2 After RRS 76.1 add:

US Sailing prescribes that an organizing authority or race committee shall not reject or cancel the entry of a boat or exclude a competitor eligible under the notice of race and sailing instructions for an arbitrary or capricious reason or for reason of race, color, religion, national origin, gender, sexual orientation, or age.

23 Prizes:

23.1 Perpetual Trophies will be awarded in accordance with STCR 24.



Seattle Yacht Club

Established in 1892

23.2 Prizes will be awarded to the skipper and crew, as follows:

Championship Series – 1st through 5th.

Daily Races – 1st through 3rd.

Master's Division – 1st thru 3rd.

Grand Masters Division – 1st thru 3rd

Top Junior Boat – under 25 years old or next youngest.

Top Female Skipper

First Classic Boat - <7300

24 Disclaimer of Liability:

Participants agree that no person or organization involved in the conduct of this Championship will be liable for any accident, injury, fatality, or damage or loss of boat or personal property arising out of a participant's preparation for or participation in any on-the-water or on-shore activities (whether social, recreational, launching, hauling, boat storage or otherwise) associated with the Championship. Nothing in these Sailing Instructions or oral statements by the Organizing Authority, their officers, directors or agents, shall modify or otherwise impair the effect of the Waiver of Liability Form, the execution of which is a condition of entry.



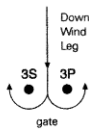
Seattle Yacht Club

Established in 1892

Appendix #1 Star Class Course Illustrations

Star Class Courses (STCR 34.3 and 34.4)

In case of small regattas the starting line may be set up at mark 3 and the finishing line at mark 1 or mark 3.



Courses 0, 1, 2, 3 and 4 are diagramed as described in STCR 34.3 and modified in the diagrams as allowed by STCR 34.4.

In Gold and Silver events, Course 0, 1, 3 or 4 shall be used. Course 2 may be used in Silver events if requested by the sponsoring fleet and approved by the Continental Committee.

In Blue and Green events Course 0, 1, 2, 3, and 4 shall be used.

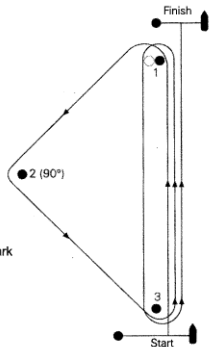
No course may be shortened during Gold, Silver, Blue or Green Events.

In Red events and Qualifications the above courses are not mandatory and may be shortened.

Course "0"

Start
1
2
3
1
3 (or gate 3A - 3B)
Finish (upwind)

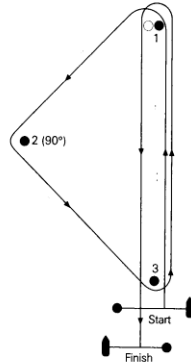
○ = optional offset mark



Course "1"

Start
1
2
3
1
(or 1 + offset mark)
Finish (downwind)

○ = optional offset mark



Course "2"

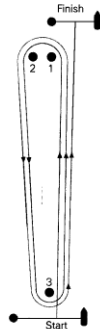
The same Course as Course "0"

Start
1
2
3
1
(or 1 + offset mark)
3 (or gate 3A - 3B)
Finish (upwind)

Course 2 may not be used at Gold events, and may only be used at Silver events with approval of the continental committee. (STCR 34.3.1)

Course "3"

Start
1
2
3 (or gate 3A-3B)
1
2
3 (or gate 3A-3B)
Finish (upwind)



Course "4"

Start
1
2
3 (or gate 3A - 3B)
1
2
Finish (downwind)

