



Seattle Yacht Club

Established in 1892

2015 Sailboat Race Book and Sailing Program Information





Glory – Seattle Yacht Club 2014 Sailboat of the Year

Seattle Yacht Club

Sailboat Race Book and Sailing Program Information

1807 East Hamlin Street
Seattle, Washington 98112

www.seattleyachtclub.org

SYC Front Desk	206.325.1000
Sailing Office	206.926.1011
Sailing Office Fax	206.324.8784

Table of Contents

Welcome to the 2015 Sailing Season.....	1
Sailboat Activity Calendar.....	3
Race Registration Procedure.....	4
Registration Checklist.....	5
SYC Sailboat Racing Program.....	6
Overview of Sailboat Racing Events.....	6
SYC Notice of Race Addendum.....	8
Puget Sound Sailboat Safety Regulations.....	10
Buoy Course Marks (position relative to R/C).....	11
Geographic Marks (position based on location).....	12
Notice of Race	
SYC Tri-Island Protection Island Race.....	13
Notice of Race	
SYC Mark Mayer Regatta.....	15
Notice of Race	
SYC Tri-Island Vashon Island Race.....	16
Race Information	
SYC Tri-Island Blake Island Race.....	18
Race Information	
SYC Grand Prix Invitational Regatta.....	20
SYC Deception Class Mini-12 Fleet.....	23
SYC Sailboat Cruising Program.....	25
Overview of Sailboat Cruising Events.....	25
Winter and Spring Power/Sail Mini Cruises.....	26
Leukemia Cup Regatta.....	27
Notice of Race	
SYC Sailboat Rendezvous and Cruise & Snooze.....	28
Commodore's Cruise.....	29
Sunshine Coast Cruise.....	29
SYC Sailing School and Junior Race Team.....	30
Summer Sailing School.....	30
Junior Race Team.....	31
Tuesday Night Sailing.....	31
High School Sailing at SYC.....	32
Opti Green Fleet Program.....	32
Adult Sailing Courses.....	32
Private Sailing Lessons.....	33
The Small Boat Fleet at SYC.....	33
Sailing Office Contact Information.....	34
Awards and Recognition.....	35
Junior Sailing Awards.....	35
Outstanding Achievement in Sailing.....	35
Sailing Performance Awards.....	36
Appendix.....	39
Sailing Program Leadership Team.....	39
Sailing Program Contacts.....	40

Welcome to the 2015 Sailing Season



The Seattle Yacht Club has a long history of organizing a broad range of public events to promote boating in the Pacific Northwest for all the boating community. I am very excited for the 2015 season!

Our events happen because enthusiastic people decide to take action, as follows: (1) A couple dozen member and guest volunteers plan and run the events, (2) the members of Seattle Yacht Club and their leadership choose to allocate coveted funds into programs that mitigate expenses but don't cover their total costs, and (3) hundreds of people get their families and friends on the water and into our events. Whichever role you play, thank you! Your participation makes more sailing happen and enriches the lives of everyone involved.

[Paul Walchenbach](#) is our Race Chair for all our regattas. Paul is looking to invigorate the outstanding regattas SYC runs and to continue the rich history of racing throughout the Pacific Northwest,

[Andrew Harvilla](#) is our Cruising Activities Chair providing his energetic leadership on cruising events and sailboat dinners. The dinners are scheduled for the second Thursday most months and feature speakers on sailing topics. This is a great place to meet other cruisers and racers and introduce guests to the Club.

[Karole Sherlock](#) is Race Committee Chair. Under Karole's leadership, volunteers will have excellent instruction on specific race committee duties. Please contact Karole to get out on the water as a member of the race committee team providing top level racing services to our regatta participants.

[Jim Medley](#) is our Protest Committee Chair and brings a history of World and National sailing experience to our program. Jim's knowledge is a welcome addition to the regatta program at SYC.

[Rhonda Halfman Hannah](#) is our Public Relations Chair who will work closely with all the Chairs to promote the SYC events. Rhonda is very excited to share all the SYC events through many media outlets that are available.

SYC is continuing our long standing involvement in the Leukemia Cup, with a low-key race/parade around Elliott Bay and a huge party on site at Elliott Bay Marina. In parallel with your individual causes, whatever they may be, please consider joining your fellow boaters at this fun and meaningful event. This is also a perfect way to make use of your boat and help you develop your crew into a team. Just being there is all you have to do to support our community.

The T-37 remote control sailboat program led by [Allan Van Ness](#) has quickly become one of the hottest sailing fleets anywhere. They have regular casual races and some

more serious championships. Anyone can play, the cost of entry is low, and the community is welcoming. Contact Allan to get involved.

The cruiser/race class is key to the soul and future of our sport. These boats sail with fewer crew on shorter, relaxed courses while the more race-optimized boats sail longer courses. Start your season by signing up for Tri-Island.

The Sailboat Committee meetings are at 6:30 p.m. on the first Thursday of most months. Whatever your interest in sailing, please come and lend a hand.

Phil Calvert, (206) 910-7977, phil.calvert@comcast.net
Fleet Captain Sail



Runaway on Lake Union

Sailboat Activity Calendar

2015 SCHEDULE

JANUARY

- 8 Sailboat Business Meeting
- 10-11 Mini-Cruise/Remote Control Derby – Port Madison
- 18 Junior Awards

FEBRUARY

- 5 Sailboat Business Meeting
- 7-8 Mini-Cruise – Port Orchard
- 12 Sailboat Dinner

MARCH

- 7 High School Opener Regatta
- 7-8 Mini-Cruise – Eagle Harbor
- 5 Sailboat Business Meeting
- 12 Sailboat Dinner

APRIL

- 2 Sailboat Business Meeting
- 9 Sailboat Dinner
- 18 T-37 NW Regionals
- 18-19 Mini-Cruise – Gig Harbor
- 25-26 Protection Island Race

MAY

- 2 SYC Opening Day
- 3 Mark Mayer Opening Day Race and Party (Free)
- 7 Sailboat Business Meeting
- 9 Vashon Island Race
- 15-17 NOOD Regatta
- 21 Sailboat Dinner (w/Power)
- 23-24 Mini-Cruise – Poulsbo
- 30 Blake Island Race

JUNE

- 4 Sailboat Business Meeting
- 6 Leukemia Cup
- 27-28 Sailboat Rendezvous **AND** Cruise & Snooze A/B

JULY

- 3 Mini-Cruise – Liberty Bay
- 26-31 Commodores Cruise

AUGUST

- 1-7 Sunshine Coast Cruise
- 15-16 McCurdy Trophy Regatta
- 22-23 Junior Olympics

SEPTEMBER

- 1-6 Star North Americans
- 3 Sailboat Business Meeting
- 10 Sailboat Dinner
- 12-13 Cruise & Snooze C/D
- 12-19 NYYC Invitational Cup

OCTOBER

- 1 Sailboat Business Meeting
- 3 T-37 Nationals
- 8 Sail/Power Dinner
- 23 GP Packets
- 23-25 Grand Prix Regatta

NOVEMBER

- 5 Sailboat Business Meeting
- 20 Annual Sailboat Awards

DECEMBER

- 3 Sailboat Business Meeting
- 10 Sail/Power Gift Exchange

Race Registration Procedure

Online Registration

Online race registration is available from the Seattle Yacht Club website at www.seattleyachtclub.org/regattas.

Entry Forms

Race entry forms are available at the Seattle Yacht Club Portage Bay clubhouse front desk. Please return your completed form with entry fees to the attention of the Sailing Office at the Seattle Yacht Club.

Deadlines

Registrations must be submitted online or received by Seattle Yacht Club by close of business (normally 1700 hours) on the entry deadline for each race. The deadline is typically the Thursday preceding the race unless otherwise indicated in the Notice of Race. Registrations accepted at the discretion of the race committee after the deadline may be assessed a \$30 late fee.

Season Fee Package

A season fee is available for the Tri-Island Series. The deadline is the deadline for the first race in the package.

Contact

For registration issues, please contact the Seattle Yacht Club Sailing Director, Brian Ledbetter, in the SYC Sailing Office.

Phone: 206.926.1011. Fax: 206.324.8784. Email: brian@seattleyachtclub.org



High School Nationals on Lake Union

Registration Checklist

Date	Event	Cruiser/ Racer	Entry Fee	Deadline ²	Enter
(3 events)	Tri-Island Package	Yes	\$150	April 23	<input type="checkbox"/>
April 25	Smith Island (Tri-Island #1)	Yes	\$60 ¹	April 23	<input type="checkbox"/>
May 3	Mark Mayer Opening Day Race	Yes	Free !!	May 3	<input type="checkbox"/>
May 9	Vashon Island (Tri-Island #2)	Yes	\$60 ¹	May 7	<input type="checkbox"/>
May 30	Blake Island (Tri-Island #3)	Yes	\$60 ¹	May 28	<input type="checkbox"/>
June 6	Leukemia Cup www.Leukemicup.org	Yes	\$150	ASAP	<input type="checkbox"/>
June 27-28	Cruise & Snooze A/B*	Yes	\$50	June 26	<input type="checkbox"/>
July 26 -31	Commodore's Cruise*	Yes	\$150	July 15	<input type="checkbox"/>
Aug 1-7	Sunshine Coast Cruise*	Yes	Free	July 31	<input type="checkbox"/>
Aug 22-23	Junior Olympics	No	\$60	Aug 22	<input type="checkbox"/>
Sept 1- 6	Star NorthAmericans www.StarClass.org	No	\$400	Aug 14	<input type="checkbox"/>
Sept 12-13	Cruise & Snooze C/D*	Yes	\$50	Sept 11	<input type="checkbox"/>
Oct 23-25	Grand Prix Invitational Boats under 30' 30' to under 40' 40' and over	No	\$150 \$200 \$250	Oct 22	<input type="checkbox"/>

¹ Tri-Island Series Package (Protection, Vashon, and Blake Island Races) is available for \$150.

² Registrations received after deadline date, (typically Thursday midnight before event), may be assessed a \$30 late fee.

*Requires membership for use of outstations.

SYC Sailboat Racing Program

With events ranging from one-design championships to the longer-distance Tri-Island races, Seattle Yacht Club actively promotes a variety of racing here in the great Pacific Northwest. In this section:

- Overview of Sailboat Racing Events
- SYC Notice of Race Addendum
- SYC Smith/Protection Island Race
- SYC Mark Mayer Regatta
- SYC Vashon Island Race
- SYC Blake Island Race
- Star North American Championship
- SYC Grand Prix Invitational Regatta

Overview of Sailboat Racing Events

Hosted and Away Regattas

Each year we look for a regional or national regatta to host locally, or we send a team to a major event hosted outside our area. This year, Seattle Yacht Club has been invited and will be competing in the New York Yacht Club Invitational Cup Qualifying Series in September, with the top 3 American YC teams earning a spot in the 2015 Invitational Cup. See our website under “Sailing/Sail Team Seattle” for additional information about our campaign to represent Pacific Northwest sailors in this event.

This year the Seattle Yacht Club will host the Star North American Championships, September 1-6. A talented, international field of Star class sailors will assemble for this major continental championship to compete for the “Silver Star” awarded to the champion.

Tri-Island Series

The Tri-Island series continues the tradition of offering longer courses to test your stamina and strategic knowledge of Puget Sound. Pre parties will be held on the Fridays prior to Smith Island and Vashon Island. The series award party will be held at the Elliott Bay Station after the Blake Island Race. A shorter Cruiser/Racer course will be offered for each race.

Smith/Protection Island Race

Alternating between Smith Island and Protection Island each year, these courses are our longest races for the year, with several challenging decision points and the opportunity to experience more wind, waves, and current conditions than normal.

Vashon Island Race

The Vashon Island course is one of the most popular races, with several distinct racing phases. Get ahead and go for a breakaway, or, if not so fortunate, hope to bring the wind to your competitors waiting at the next corner. These tactical courses will take you south with scenic views of Elliott Bay and Mt. Rainier.

Blake Island Race

Whether you're testing your mettle or rolling the dice, you select which way to round Blake Island. Finish off Elliott Bay Marina with series awards party at the Seattle Yacht Club Elliott Bay station.

Mark Mayer Regatta

The Mark Mayer Regatta is coordinated with the Opening Day weekend. The course is just north of the Evergreen Point Bridge on Lake Washington. A post-race party will be at the Seattle Yacht Club Portage Bay clubhouse.

Star North American Championship

The Star North American Championship is a special event for 2015. Seattle Yacht Club will be hosting this event and the last time a Star Championship was held here was 1971.

Grand Prix Invitational Regatta

The season's racing activities culminate with the Grand Prix Invitational Regatta. Boats must qualify for this prestigious invitation-only event. Whole one design fleets with representative qualifiers may also be invited. Grand Prix primarily tests buoy racing skills and, if conditions are right, middle distance racing skills over a three-day period with parties every evening.



Cruiser/Racer competition at Tri-Island, Mark Mayer, and Cruise & Snooze

SYC Notice of Race Addendum

The SYC Notice of Race Addendum is common language that a particular Notice of Race may specifically incorporate. If a Notice of Race and the SYC Notice of Race Addendum are in conflict, the Notice of Race shall have precedence.

The organizing authority is the Seattle Yacht Club (SYC).

1 Rules

- 1.1 This regatta will be governed by the rules as defined in the Racing Rules of Sailing (RRS).
- 1.2 The prescriptions of US Sailing to the following rules shall apply: 34, 40, 48.1, 56, 60, 61.4, 63.2, 63.4, 64.3(b), 67, 70.5(a), 76.1, 82, 86.3, 88.2, Appendix G, R, and T. The text of these prescriptions is available from the US Sailing website at raceadmin.ussailing.org/rules/prescriptions.
- 1.3 Other changes to the rules may be noted elsewhere in the Notice of Race or Sailing Instructions. If the Notice of Race and Sailing Instructions are in conflict, the Sailing Instructions shall have precedence.
- 1.4 Changes to the Notice of Race will be available from the Seattle Yacht Club website at www.seattleyachtclub.org/regattas or, if not available from the website, on the notice board at the Seattle Yacht Club south entrance.

2 Eligibility and Entry

- 2.1 Entrants must register online at www.seattleyachtclub.org, or by form delivered to Seattle Yacht Club, and pay appropriate fees by the registration deadline. Registration after the deadline may be accepted at the discretion of the organizing authority and may require an additional late fee.
- 2.2 A boat wishing to use sails with identification different from her own must receive permission from the organizing authority by the registration deadline or when her late registration is accepted. This changes RRS 77.
- 2.3 A boat racing in a handicap class must ensure that her correct rating is issued and recorded by the class organization by the registration deadline or when her late registration is accepted. Boats participating without a valid class certificate will not be entered or scored and her entry fee may not be refunded.
- 2.4 A change in a boat's handicap class rating will take effect on the day it is recorded by the class organization. Changes are not retroactive. When a boat's rating changes between races that are part of a series, the boat shall remain in the same class in which she started the series.
- 2.5 A boat rated by her handicap class in consideration of water ballast may use water ballast as rated. This changes RRS 51.

3 Operating and Equipment Requirements

- 3.1 Sailing is an activity that has an inherent risk of damage and injury. Competitors in this event are participating entirely at their own risk. See RRS 4, Decision to Race. The responsibility for a boat's decision to participate in a race or to continue racing is hers alone. The race organizers (organizing authority, race committee, protest committee, host club, sponsors, or any other organization or official) will not be responsible for damage to any boat or other property or the injury to any competitor, including death, sustained as a result

of participation in this event. By participating in this event, each competitor agrees to release the race organizers from any and all liability associated with such competitor's participation in this event to the fullest extent permitted by law.

- 3.2 A monohull boat racing in a PHRF handicap class must comply with one of the two following sets of equipment requirements, (a) or (b). For multihulls or boats racing in an IRC class they must comply with (b):
- a) Pacific International Yachting Association (PIYA) Safety Equipment Requirements according to the category requirement identified in the Notice of Race. The text of these regulations is available from the PIYA website at www.piyasailing.net.
 - b) ISAF Offshore Special Regulations (OSR), without US Sailing prescriptions, according to the category requirement identified in the Notice of Race. The text of these regulations is available from the International Sailing Federation (ISAF) website at www.sailing.org/documents/special-regs. The following changes apply to OSR Categories 3 and 4:
 - (4) OSR 3.27.5 not required for permanently sealed, non-serviceable LED fixtures.
 - (5) OSR 3.28.1 required as in SER Nearshore Category. If using outboard motor, it shall be on its operating mount and easily inserted into the water for immediate use including during severe sea and wind conditions.
 - (6) OSR 3.28.3 required as in Nearshore and Inshore Categories and (b) duration requirement changed to 6 hours.
 - (13) OSR 4.26.4 (g) is changed to: mainsail reefing to reduce the luff by at least 10%.
 - (14) OSR 5.01.1 (a) and (b) replaced by US Sailing prescription to RRS 40, (c) required from one hour before sunset until sunrise.
- 3.3 Boats must comply with U.S. Coast Guard regulations.
- 3.4 Boats must be operated in accordance with the Puget Sound Sailboat Safety Regulations, available in the appendix of this Race Book.
- 3.5 The race committee may inspect a boat any time before or after racing for compliance with requirements.
- 3.6 Penalties under SYC Notice of Race Addendum 3 may be less than disqualification. This changes RRS 64.1.
- 4 Scoring
- 4.1 The time limit is the maximum allowable time from each boat's starting signal to her finish time or a time of day. Boats that do not finish within their time limit will be scored Did Not Finish (DNF). This changes RRS 35.
- 4.2 A boat that did not start (DNC, DNS, OCS), did not finish (DNF), retired (RET), or is disqualified (DSQ, DNE, DGM, BFD) will be scored the number of finishers plus one. This changes RRS A4.2 and A9.
- 5 Sailing Instructions
- 5.1 Sailing Instructions will be available by the Thursday before the first race from the Seattle Yacht Club website at www.seattleyachtclub.org/regattas or, if not available from the website, on the notice board at the Seattle Yacht Club Portage Bay clubhouse south entrance.

Puget Sound Sailboat Safety Regulations

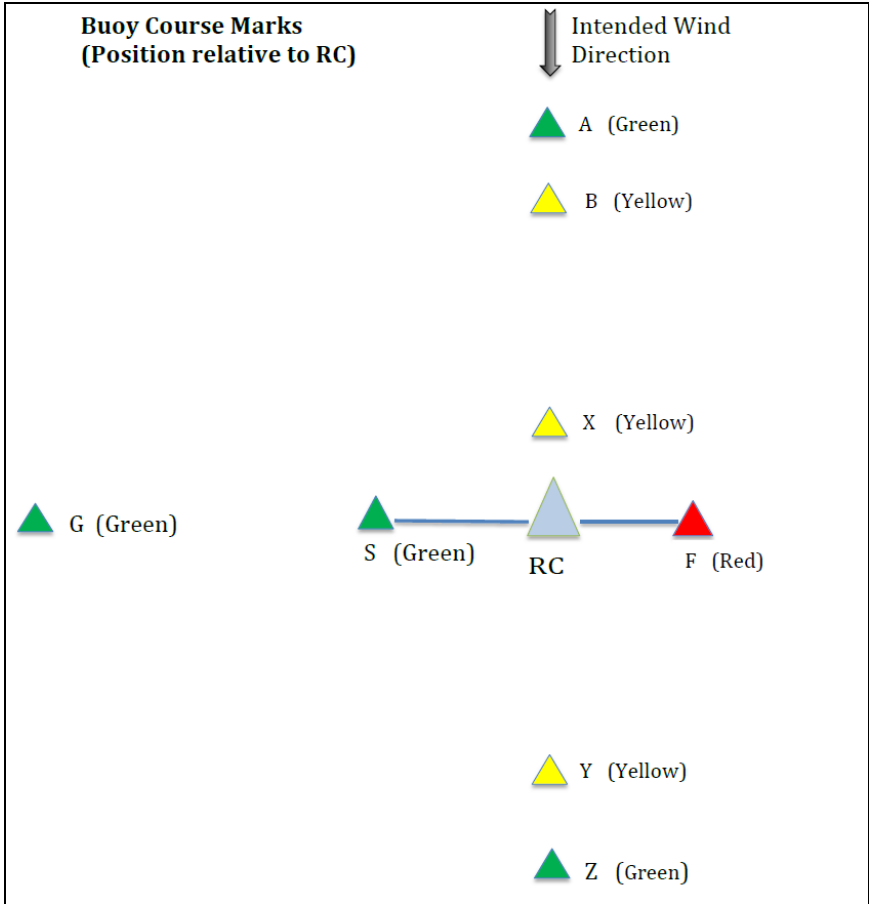
2002 Revision as adopted by the Shilshole Bay, Sloop Tavern, Corinthian of Seattle, and Seattle Yacht Clubs

We must share Puget Sound with its commercial traffic, including many deep-water vessels and tows. It is sobering to note that, if your boat is one mile dead-ahead of a freighter coming down the Sound at normal speed, and the freighter's helm is put hard over to avoid you, the freighter's bow will miss you, but her stern will not! Obviously, this implies that early and decisive action is required to keep your boat out of the path of a large oncoming vessel or tow.

1. Yachts must not sail across a tow line, too close ahead, or too close alongside of commercial traffic. Deep water vessels have limited ability to change course and speed. Barges under tow can yaw unexpectedly well out to the side at speeds essentially the same as they are being towed. Yachts should not pass less than one mile ahead and 1/4 mile to the side of large vessels.
2. Rule 10 of the International and Inland Rules to Prevent Collisions at Sea (COLREGS) requires that no power-driven vessel less than 20 meters (66 feet) in length, and no sailing vessel (of any size) may impede the safe passage of a power-driven vessel following a Vessel Traffic System (VTS) Lane.
3. Rule 9 of the COLREGS requires that no power vessel of less than 20 meters (66 feet) in length and no sailing vessel (of any length) shall impede the safe passage of any vessel which can navigate only within a narrow channel or fairway. Puget Sound can be considered a "narrow channel" for most large commercial traffic. "Impede" means to cause to alter speed or course or to take evasive action.
4. A yacht in position where it may impede commercial traffic must exit from the "danger area" immediately, under auxiliary power if necessary. If power is used, it must be reported to the Race Committee at the finish line. Also, a written report must be made on a protest form, showing the location, time, duration of power use, speed, direction of exit, and that the competitive position of the yacht was not improved. If the last item cannot be demonstrated adequately, a time penalty may be imposed.
5. Radar reflectors must be flown at all times when racing. They must meet IMO recommendations (i.e., of metal plates of sufficient rigidity to maintain a 90 degree angle), be not less than 12 1/2 inches in diameter, and be installed not less than 4 meters (13 ft.) above the water. See PIYA Special Regulations paragraph 3.8.
6. Navigation lights must be shown between sunset and sunrise as required by the International Rules of the Road.
7. Observed and/or reported violations of the safety regulations may be protested. The Race Committee shall have the option of issuing a "warning" when deemed appropriate. Warnings are recorded and may be considered when judging any future reports.

Buoy Course Marks (position relative to RC)

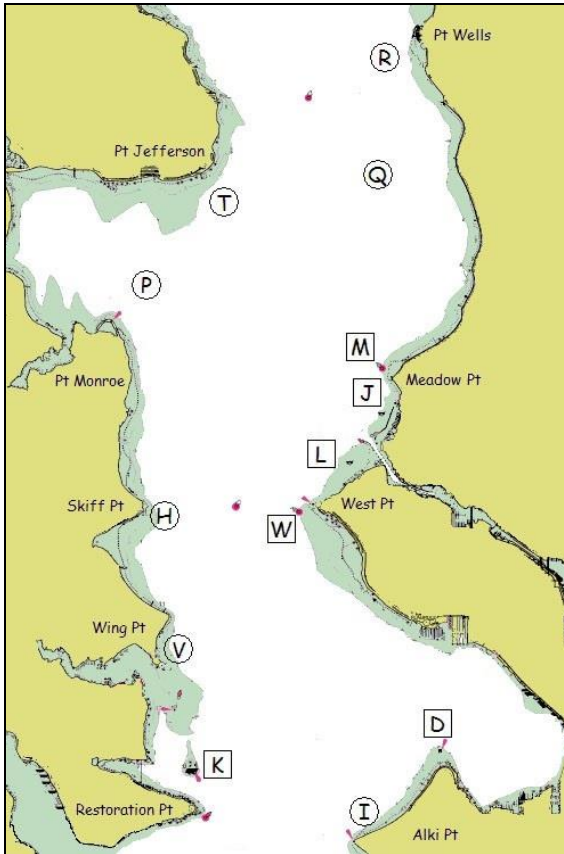
Please note that the Sailing Instructions for a particular race may use modified or different mark descriptions than described here.



The course diagram for buoy course marks shows the general orientation of the Race Committee signal boat "R/C", other marks, (identified by the letters S, A, B, C, O, G, X, Y, Z and F), and the intended wind direction. All marks other than the race committee signal boat are inflatable buoys. Positions are approximate and the diagram is not to scale.

S When a starting mark is for a downwind start, it may be on either side of the race committee boat.

Geographic Marks (position based on location)



Bearings are magnetic. Distances are nautical miles (NM). Bearings, distances, and positions are approximate. Each temporary mark is shown with its label in a circle. Each permanent mark is near its label in a square box.

- D Duwamish Head Lt. (LL #16910)
- H Temporary mark 0.3 NM E of Skiff Pt.
- I Temporary mark 0.5 NM N of Alki Pt.
- J Shilshole Bay N Mooring Buoy 0.25 NM SSW of N entrance
- K Blakely Rock (LL #16830)
- L Shilshole Bay S Mooring Buoy 0.5 NM SW of S entrance
- M Meadow Pt. Buoy (LL #16765)
- P Temporary mark 0.75 NM NNE of Pt. Monroe
- Q Temporary mark 3.0 NM bearing 340° from Meadow Pt. Buoy
- R Temporary mark 0.5 NM SW of Pt. Wells
- T Temporary mark 0.5 NM SE of Pt. Jefferson
- V Temporary mark 0.3 NM NNE of Wing Pt.
- W West Pt. Buoy (LL #16805)



Race Committee Boat - *Portage Bay*

Notice of Race

SYC Tri-Island Protection Island Race

Date: Starts April 25, 2015 (Saturday)

Location: Northern Puget Sound, Admiralty Inlet, and southeastern Straits of Juan de Fuca. The starting line and finishing line will be in Shilshole Bay between Meadow Point and the Shilshole Bay Approach Buoy.

Course:

Long Course: Start by leaving the starting mark buoy to port, round Protection Island to starboard, and finish by leaving the finishing mark buoy to port.

Short Course: Start by leaving the starting mark to port, round Double Bluff Lighted Buoy 1 (LL #16525) to port, and finish by leaving the finishing mark to port.

Sport Boat Course: Same as short course (scored separately).

Cruiser/Racer Course: Start by leaving the starting mark to port, round a temporary mark located off Edmonds at approximately 47° 53.0' N, 122° 24.0' W (47.88N 122.40W) to port, and finish by leaving the finishing mark to port.

Time of First Warning: 0900

Time Limits:

Long Course: 30 hours

Short Course / Sport Boat Course: 18 hours

Cruiser/Racer Course: 8 hours

Classes to Race: PHRF-NW, including Cruiser/Racer, and one-design keelboat.

Equipment Requirement Category:

Long Course:	SER Coastal or OSR 3
Short Course/Sport Boat Course:	SER Inshore or OSR 4
Cruiser/Racer Course:	SER Inshore or OSR 4

Other Provisions:

- Notice of Race amended by the SYC General Notice of Race.
- The short course is available to boats rating 75 and slower. The sport boat course is open to boats 33 feet and less rating faster than 75.
- A shortened course option will be available for boats that take their time at a designated shortened course option finishing line. Boats using the shortened course option will be considered finishers and will be scored in class and overall based on their time and the distance for the shortened course starting immediately behind boats finishing the full course.
- This race is part of the SYC Tri-Island Series. There will be no scoring exclusions for the series. This changes RRS A2.

Awards: 1st overall on each course. For the Tri-Island Series, 1st overall per course and 1st, 2nd, 3rd in class. Awards will be presented at the awards party.

Social Activities: The traditional pre-parties with free beer and free moorage will be on Friday, April 24, and on Friday, May 8 at the SYC Elliott Bay station. Elliott Bay Marina has offered free guest moorage, based on availability for Friday nights during the series. Please contact the marina for availability and assignment at 206-285-4817 or VHF 78A.

The series Awards Party will be after the Blake Island race on Saturday May 30th at the SYC station at Elliott Bay Marina from 4 to 9 PM. The party will have free appetizers, a no-host bar, a live band, and participation prizes for each boat.

Registration Deadline: April 23, 2015 (Thursday)

Registration Fee: \$60 (or \$150 for SYC Tri-Island Series)

Chairpersons: Paul Walchenbach, 206-948-7095 paul@walchenbachlaw.com



Seattle Yacht Club hosts Jr. Olympics Regatta

Notice of Race SYC Mark Mayer Regatta

Date: May 3, 2015 (Sunday)

Location: Lake Washington north of the SR-520 Bridge. The start and finish will be in the area between Webster Point, Hunts Point, and Sand Point.

Course: The courses will be as designated in the Sailing Instructions.

Time of First Warning: 1200

Time Limit: 4 hours

Classes to Race: PHRF-NW. Other classes of at least five boats may apply.

Equipment Requirement Category: SER Nearshore or OSR 5 One-design classes shall comply with their class rules.

Other Provisions: Notice of Race amended by SYC Notice of Race Addendum.

Awards: 1st, 2nd, and 3rd place in class

Social Activities: Party immediately after the race at Seattle Yacht Club.

Registration Deadline: 6pm, May 3, 2015 (Saturday)

Registration Fee: Free!

Event Chairperson: Rhonda Halfman, 425-246-3612, rhondaha@gmail.com

Notice of Race

SYC Tri-Island Vashon Island Race

Date: May 9, 2015 (Saturday)

Location: Puget Sound. The starting line and finishing line will be in Shilshole Bay between Meadow Point and the Shilshole Bay Approach Buoy.

Course:

Long Course: Start by leaving the starting mark buoy to port, round Maury Island and Vashon Island to starboard, and finish by leaving the finishing mark buoy to port.

Short Course: Start by leaving the starting mark buoy to port, round a temporary buoy north of Point Robinson at approximately 47° 24.0' N, 122° 23.0' W (47.400N 122.383W) to port, and finish by leaving the finishing mark buoy to port.

Sport Boat Course: Same as short course (scored separately).

Cruiser/Racer Course: Start by leaving the starting mark buoy to port, round Blake Island to port or starboard, and finish by leaving the finishing mark buoy to port.

Time of First Warning: 0900

Time Limit:

Long Course: 19 hours

Short Course / Sport Boat Course: 19 hours

Cruiser/Racer Course: 9 hours

Classes to Race: PHRF-NW. Other classes of at least five boats may apply.

Equipment Requirement Category:

Long Course: SER Coastal or OSR 3

Short Course / Sport Boat Course: SER Nearshore or OSR 5

Cruiser/Racer Course: SER Nearshore or OSR 5

Other Provisions:

- Notice of Race amended by SYC Notice of Race Addendum.
- The short course is available to boats rating 75 PHRF and slower. The sport boat course is open to boats 33 feet and less rating faster than 75.
- A shortened course option will be available for boats that take their time at a designated shortened course option finishing line. Boats using this option will be considered finishers and will be scored in class and overall based on their time and the distance for the shortened course starting immediately behind boats finishing the full course.
- This race is part of the SYC Tri-Island Series. There will be no scoring exclusions for the series. This changes RRS A2.

Awards: 1st overall on each course. For the Tri-Island Series, 1st overall per course and 1st, 2nd, 3rd in class. Awards will be presented at the awards party.

Social Activities: The traditional pre-parties with free beer and free moorage will be on Friday, April 24, and on Friday, May 8 at the SYC Elliott Bay station. Elliott Bay Marina has offered free guest moorage, based on availability for Friday nights

during the series. Please contact the marina for availability and assignment at 206-285-4817 or VHF 78A.

The series Awards Party will be after the Blake Island race on Saturday May 30th at the SYC station at Elliott Bay Marina from 4 to 9 PM. The party will have free appetizers, a no-host bar, a live band, and participation prizes for each boat.

Registration Deadline: May 7, 2015 (Thursday)

Registration Fee: \$60 (or \$150 for SYC Tri-Island Series)

Chairpersons: Paul Walchenbach, 206-948-7095 paul@walchenbachlaw.com



Race committee volunteers aboard *Portage Bay* keeping track of the fleet.



J-105s crossing the Sound during Tri-Island Series.

Notice of Race

SYC Tri-Island Blake Island Race

Date: May 30, 2015 (Saturday)

Location: Puget Sound. The starting line will be in Shilshole Bay between Meadow Point and the Shilshole Bay Approach Buoy. The finishing line will be in the northern part of Elliott Bay off the Elliott Bay Marina breakwater.

Course:

Long Course: Start by leaving the starting mark buoy to port, round Blake Island to port or starboard, round a temporary mark approximately 0.3 NM SSE of West Point Lighted Buoy 1 (LL #16805) at approximately 47° 39.3' N, 122° 26.4' W (47.655N 122.440W) to starboard, and finish by leaving the finishing mark buoy to starboard.

Short Course: Same as long course.

Sport Boat Course: Same as long course (scored separately).

Cruiser/Racer Course: Start by leaving the starting mark buoy to port, round Blakely Rock ("K") to port, round the Duwamish Head Light ("D") to port, round a temporary mark approximately 0.3 NM SSE of West Point Lighted Buoy 1 (LL #16805) at approximately 47° 39.3' N, 122° 26.4' W (47.655N 122.440W) to starboard, and finish by leaving the finishing mark buoy to starboard.

Time of First Warning: 0900

Time Limits:

Long Course: Earlier of 8 hours or 1900

Short Course / Sport Boat Course: Earlier of 8 hours or 1900

Cruiser/Racer Class Course: Earlier of 8 hours or 1900

Classes to Race: PHRF-NW. Other classes of at least five boats may apply.

Equipment Requirement Category: SER Nearshore or OSR 5

Other Provisions:

- Notice of Race amended by SYC Notice of Race Addendum.
- The short course is available to boats rating 75 PHRF and slower. The sport boat course is open to boats 33 feet and less rating faster than 75.
- A shortened course option will be available for boats that take their time at a designated shortened course option finishing line. Boats using the shortened course option will be considered finishers and will be scored in class and overall based on their time and the distance for the shortened course starting immediately behind boats finishing the full course.
- This race is part of the SYC Tri-Island Series. There will be no scoring exclusions for the series. This changes RRS A2.

Awards: 1st overall on each course. For the Tri-Island Series, 1st overall per course and 1st, 2nd, 3rd in class. Awards will be presented at the awards party.

Social Activities: The traditional pre-parties with free beer and free moorage will be on Friday, April 24, and on Friday, May 8 at the SYC Elliott Bay station. Elliott Bay Marina has offered free guest moorage, based on availability for Friday nights

during the series. Please contact the marina for availability and assignment at 206-285-4817 or VHF 78A.

The series Awards Party will be after the Blake Island race on Saturday May 30th at the SYC station at Elliott Bay Marina from 4 to 9 PM. The party will have free appetizers, a no-host bar, a live band, and participation prizes for each boat.

Registration Deadline: May 28, 2015 (Thursday)

Registration Fee: \$60 (or \$150 for SYC Tri-Island Series)

Chairpersons: Paul Walchenbach, 206-948-7095 paul@walchenbachlaw.com



Tri-Island Series Party at the Elliott Bay Marina clubhouse

Race Information

SYC Grand Prix Regatta

Note: This is an informal announcement, not a Notice of Race, and is not part of the rules of the event. For more information, please see the Notice of Race at www.seattleyachtclub.org/regattas.

Dates: October 23-25, 2015 (Friday, Saturday, and Sunday)

Location: The racing area is Puget Sound north of Alki Pt. and south of Pt. Wells. The starting line will be in the vicinity of Shilshole Bay and the area north of Meadow Point.

Course: One or more buoy or mid-distance races may be sailed each day. The courses will be as designated in the Sailing Instructions.

Scheduled Time of First Warning:

Friday: 1300
Saturday and Sunday: 1030

Classes to Race: PHRF-NW and one-design keelboats of at least 24 feet with at least five boats. Other classes may apply at the discretion of the organizing authority. Monohull, multihull, and cruiser/racer boats will race in separate classes.

Equipment Requirement Category: SER Nearshore or OSR 5 One-design classes shall comply with their class rules.

Other Provisions:

- Qualifying Events – Only boats that qualify based on their performance in selected races in the prior year and are invited, at the discretion of the organizing authority, will be eligible to register. Boats may also qualify at the discretion of the organizing authority. For more information, see the Qualifying Events section, below.
- One Design Fleets – A whole one-design class may qualify if several boats of the class have qualified and can register a number of boats suitable for a one design class start. For more information, please contact the regatta organizers listed below.
- Permanent trophy recognition will be awarded for each class.
- The race committee will have on-the-water discretion to run one or more races each day with an emphasis on buoy courses.

Awards: 1st, 2nd, and 3rd place in class

Social Activities: There will be parties after racing each day, location TBD. The awards dinner will be after racing on Sunday at Seattle Yacht Club.

Registration Deadline: October 22, 2015 (Thursday)

Registration Fee (based on boat length):

Under 30': \$150
30' to under 40': \$200
40' and over: \$250

Chairpersons: Paul Walchenbach, 206-948-7095, paul@walchenbachlaw.com

Qualifying Events:

The following events are qualifiers in racing classes with at least four boats registered:

Seattle Yacht Club Events (1st, 2nd or 3rd in class)

SYC Tri-Island Series and races:	SYC Mark Mayer Regatta
SYC Smith / Protection Island Race	SYC Jack & Jill Regatta
SYC Vashon Island Race	SYC Star & Bar Regatta
SYC Blake Island Race	SYC Grand Prix Regatta (prior year)
SYC/CYC NOOD Regatta	

Other Events (1st, 2nd, or 3rd in class)

SSSS South Sound Series and races:	WVYC Southern Straits
TYC Vashon Island	CYC PSSR
TTPYC Duwamish Head	RVicYC Swiftsure (S,CF,UCF,JF,UJF)
OYC Toliva Shoal	Whidbey Island Race Week
GHYC Islands	CBSA Cowichan Bay Regatta
CYC Center Sound Series and races	Van Isle 360
CYC Blakely Rock	RVanYC/LYC Vic-Maui
CYC Scatchet Head	CYC PSSC
CYC Three Tree Point	OIYC Round the County

Other Events (1st in class)

STYC Iceberg	RVanYC Easter Seals Regatta
RVanYC VARC Opener	NYC SIN
STYC Blakely Rock Benefit	
RVicYC THRASH	AYC Northern Century
FCYC VARC Spring	BYC PITCH
SBYC/STYC Ballard Cup Series (I-III)	MBYC Maple Bay Regatta
STYC Race to the Straits	SBYC Trans-Puget
SISC Round Saltspring	CYCE Foulweather Bluff
AYC Windermere Cup	STYC Fall
Sail Northwest J-Fest	RVanYC VARC Closer
RVanYC WAVES	

Prior Award Winners

2013	
Wasabi	Greg Slyngstad
Terremoto	William Weinstein
Tamtyv	Stuart Burnell
Delirium	Jerry Diercks
Trophy Wife	Glenn Klute
Patricia	Chris Tutmark
White Wing	Joe Williams
2012	
FreeByrd	Neil Fiske
Sachem	William Buchan
Absolutely	Charlie Macaulay
Delirium	Jerry Diercks
Slick	Bob Mayfield / Pat Nelson
2011	
Flash	Steve Travis
Voodoo Child	Brian Duchin
Tantivy	Stuart Burnell
Shoot the Moon	Don Wills II
Here & Now	Pat Denney
Arturo	Dan Westra

2010	
Flash	Steve Travis
Tachyon	Shaun Breese
Absolutely	Charlie Macaulay
Dos	Paul Faget
Trophy Wife	Glenn Klute
More Uff Da	Ben Braden
2009	
Banshee	Derek Campbell
Dos	Brad Butler
Declaration of Independence	Brian Watkins
Karma	Peter Shorett
Money Shot	Mike Schiltz
Here & Now	Pat Denney
Ladybug	Mark Brink

2008		
Braveheart	Charles Burnett III	
Banshee	Derek Campbell	
Declaration of Independence	Brian Watkins	
Money Shot	Mike Schiltz	
Gaucho	John Cahill	
Three Ring Circus	Nate Creitz	
Jude Stoller	Makika	
Tikanga	Dalton Bergan	
2007		
Makika	Jude Stoller	
Braveheart	Charles Burnett	
Ballistic	Gordy Cole	
Declaration of Independence	Brian Watkins	
Astral Plane	Adam Korbin	
Grafix	Dave Martin	
Money Shot	Mike Schiltz	
Time Warp	Peter Nelson	
Three Ring Circus	Nate Creitz	
2006		
Makika	Jude Stoller	
Coruba	Rob Fleming	
Ballistic	Gordy Cole	
Finale	Roger Hills	
Sunday Ticket	Lance McDonough	
Trophy Wife	Glenn Klute	
Time Warp	Peter Nelson	
Here & Now	Pat Denney	
Three Ring Circus	Nate Creitz	
2005		
Makika	Jude Stoller	
Braveheart	Colin Booth	
Storyville	Darrin Towe / John Hoag	
Declaration of Independence	Brian Watkins	
Corvo	Tom Kerr	
Judo Chop	Herb Cole	
Gaucho	John Cahill	
Percussive Maintenance	Hans Spiller	
2004		
Coruba	Rob Fleming	
Midsummer	Stig Osterberg	
Gaia	Bob Riggie	
Break'n Wind	Matt MacGregor	
Ginny	Charles Mottl	
Eclipse	Brad Butler	
Dragonfly	Pat McGarry	
2003		
Coruba	Rob Fleming	
Midsummer	Stig Osterberg	
Declaration of Independence	Brian Watkins	
Elixir	Mike Milburn	
Isabeau	Carl Freund	
Morphine	Brad Butler	
Scooter	Mike Wright	
2002		
Go Dog Go	Herb Cole	
Elixir	Mike Milburn	
Dangerous When Wet	Chris Winnard	
Sibling Rivalry	Will Marken	
2001		
Go Dog Go	Herb Cole	
X-S	Colin Nichols	
Morphine	Brad Butler	
2000		
Elixir	Mike Milburn	
Eclipse	Brad Butler	
Coral Reefer	Dave Dupree	
1999		
Paddywagon	Brian Huse	
Ginny	Charles Mottel	
Dragonfly	Patrick McGarry	

1998		
China Cloud	Bill Buchan	
Jubilee	Bill Burnett	
Splash Tango 2	Stacey Wilson	
Capella	Sherwood/Powley/Kubas	
1998		
China Cloud	Bill Buchan	
Jubilee	Bill Burnett	
Splash Tango 2	Stacey Wilson	
Capella	Sherwood/Powley/Kubas	
1997		
China Cloud	Bill Buchan	
Jubilee	Bill Burnett	
Roxanne	Gordon Stoll	
Kurrewa	Bob Henderson	
Hail Merry	Trevor Hayward	
Hanoman	Thomas Reese	
1996		
Cassiopeia	Charles Burnett	
Charisma	Roser/Robins	
Showtime	Bob Mayfield	
Fairwind	Putman/Joblonski	
Francesca	James Miller	
Alderbaran	Sherwood/Kubas	
Bedford Lass	John Sterry	
Hanoman	Thomas Reese	
1995		
Cassiopeia	Charles Burnett	
War Pig	Jeff Good	
Aldebaran	Steve Kubas	
Magic	Dave Schutte	
1994		
Oaxaca	Gene Twiner	
Aldebaran	Steve Kubas	
Choices II	Dave Champion	
Mustang Sally	Pryde/Schiltz	
1993		
Oaxaca	Gene Twiner	
White Lies	James Marta	
Elixir	Mike Milburn	
Twinkle	Alex Kimball	
White Squall	Roger Deitz	
1992		
Oaxaca	Gene Twiner	
Mustard Seed	Stacey Wilson	
Sirius	Ken & Joanna Hays	
Another Child	Lloyd Mathison	
Rascal	Bill Watkins	
1991		
Oaxaca	Gene Twiner	
Schuss	Ed Webb	
Wild Turkey	David Lynch	
The Morgan	Ken & Sandy Robbins	
Tiger Rag	Bill Headden	
1990		
Jack Rabbit	Don Hebard	
Starfire	Nelson/Benjamin	
Impulse	Ken & Sandy Robbins	
Mo Betta Two	Chuck Pepka	
1989		
Snook	Erik Bentzen	
Teddy Bear	Grey Hawken	
Keladi	Ray Fiedler	
Lady Bug	Alan Holt	
1988		
Sachem	Bill Buchan	
Gadzooks	Willis/Willhite	
Rev	John Thompson	
1987		
Bonnie	Badgley/Callaghan	
Lucille	Stamper/ Stamper	
Flamenco	Rocky Goodhope	

SYC Deception Class Mini-12 Fleet

With twenty active boats and over 175 races every year, the Seattle Yacht Club Deception Class Mini-12 Fleet is the most active One Design fleet in the Pacific Northwest!

The Deception, built in Victoria B.C., is a 13' sloop designed by two Royal Victoria Yacht Club members to about one-fifth the scale of the 1980's America's Cup yachts. We have forty members as individual boat owners or in boat partnerships, which is a practical way to keep the costs down and get all the boats out for the regattas.

Every year we have seven series consisting of five regattas each. And with our friends at Royal Victoria Yacht Club and their ten boats, our two clubs alternate as host for an annual Inter-Club Team Race Regatta. The Interclub Regatta will be held at Royal Vancouver Yacht Club, April 11-12, 2015.



Mini-12's racing on Portage Bay

No regattas are held in July and August, when some members go on vacation or cruising. To accommodate our members who leave town for skiing or golfing, we score our Fleet Championship using their best five series. Each of our ownerships teams will act as race committee for about two regattas per year.

The Mini-12's rest upon yard trailers aboard two barges at the inshore end of Dock 3 at SYC. These barges are equipped with an electric hoist to make launch and recovery easy. Take a close look at the boats and picture getting out racing on Portage Bay as captain and crew! The Mini-12 fleet is a great place to get started in your sailing career and learn from many of the regions finest and most experienced sailors.

Contact Fleet Captain [Robert Hale](#) to come out for a sail.

SYC Deception Class 2015 schedule

Date	Day	Time	Event
JANUARY 2015			
1/4/2015	Sunday	2:00	Winter Series, Regatta 5
1/11/2015	Sunday	2:00	Late Winter Series, Regatta 1
1/25/2015	Sunday	2:00	Late Winter Series, Regatta 2
FEBRUARY 2015			
2/1/2015	Sunday	2:00	Late Winter Series, Regatta 3

2/8/2015	Sunday	2:00	Late Winter Series, Regatta 4
2/22/2015	Sunday	2:00	Late Winter Series, Regatta 5
MARCH 2015			
3/1/2015	Sunday	2:00	Spring Series, Regatta 1
3/8/2015	Sunday	2:00	Spring Series, Regatta 2
3/15/2015	Sunday	2:00	Spring Series, Regatta 3
3/22/2015	Sunday	2:00	Spring Series, Regatta 4
3/29/2015	Sunday	2:00	Spring Series, Regatta 5
APRIL 2015			
4/1/2015	Wednesday	6:00	Team Racing, Practice 1
4/5/2015	Sunday	2:00	TeamRacing,Practice2
4/8/2015	Wednesday	6:00	Team Racing, Practice 3
4/10/2015	Friday	6:00	Social Welcome for SYC Sailors at RVicYC
4/11-12/2015	SAT & SUN	All Day	Inter-Club Team Racing Regatta @ RVicYC
4/15/2015	Wednesday	6:00	Late Spring Series, Regatta 1
4/22/2015	Wednesday	6:00	Late Spring Series, Regatta 2
4/29/2015	Wednesday	6:00	Late Spring Series, Regatta 3
4/30/2015	Thursday	2:00	Canadian Exchange Regatta
MAY 2015			
5/2/2015	Saturday	Noon	Opening Day
5/6/2015	Wednesday	6:00	Late Spring Series, Regatta 4
5/13/2015	Wednesday	6:00	Late Spring Series, Regatta 5
5/16/2015	SAT	All Day	Lake Union Regatta
5/20/2015	Wednesday	6:00	Summer Series, Regatta 1
JUNE 2015			
6/3/2015	Wednesday	6:00	Summer Series, Regatta 2
6/10/2015	Wednesday	6:00	Summer Series, Regatta 3
6/17/2015	Wednesday	6:00	Summer Series, Regatta 4
6/24/2015	Wednesday	6:00	Summer Series, Regatta 5
JULY & AUGUST 2015			
No Racing Scheduled			
SEPTEMBER 2015			
9/6/2015	Sunday	3:00	Fall Series, Regatta 1
9/13/2015	Sunday	3:00	Fall Series, Regatta 2
9/20/2015	Sunday	3:00	Fall Series, Regatta 3
9/27/2015	Sunday	3:00	Fall Series, Regatta 4
10/4/2015	Sunday	3:00	Fall Series, Regatta 5
10/4/2015	Sunday	5:00	Annual Fleet Owners Meeting

SYC Sailboat Cruising Program

Cruising events are for members of Seattle Yacht Club, except as noted.

- Overview of Sailboat Cruising Events
- Winter and Spring Power/Sail Mini Cruises
- Leukemia Cup
- Cruise & Snooze
- Commodore's Cruise and Sunshine Coast Cruise

Overview of Sailboat Cruising Events

Winter and Spring Power/Sail Mini Cruises

These early-season cruises are open to all SYC boaters, power and sail. Each cruise starts off Shilshole on a Saturday and goes to a nearby destination. AI's are encouraged to attend; kids welcome. IF there are small craft warnings, the cruise will be cancelled. There is no charge for Mini-Cruises and they are a terrific way to get a jump on the season and enjoy time on the water with your friends.

Leukemia Cup

Seattle Yacht Club is a proud participant in the annual Leukemia Cup Regatta to benefit the Leukemia and Lymphoma Society with a casual race in Elliott Bay and tropical themed auction party. This event is open to everyone. We typically raise \$125,000 to \$150,000 in the name of the Seattle area boating and sailing community. Come take part in doing something fun and good with our sport and join the 80 or so boats and 300 people at the party at Elliott Bay Marina to enjoy the food and drink, the band, the games, and the good company!

Cruise & Snooze and Sailboat Rendezvous

This time-honored cruising event is ideal for families. With a reverse start and non-flying sails, everyone is guaranteed to have a great time and the racing is optional. Come and enjoy the company of your SYC sailing friends at a casual event. Spend the night at Port Madison and race back the next day.

Commodore's Cruise and Sunshine Coast Cruise

Join friends, and make some new ones, on the week-long Commodore's Cruise from Henry Island to Ovens Island, with casual races most days and overnight stops along the way. Follow it up the week after with the Sunshine Coast Cruise from Ovens to the doorstep of Desolation Sound, with interesting anchorages along the way.

Winter and Spring Power/Sail Mini Cruises

OK boaters here is the POWER/SAIL Mini Cruise schedule. AI's are encouraged to attend; kids welcome. If there are small craft warnings, the event is cancelled.

This is classified semi-official non-event event which means there is no charge for TONS of fun and adventure.

Greenbox usually starts around 1730. Dinner is potluck or at a local restaurant as below. Bring an appetizer for the Greenboxes, and something to share for the potlucks.

Registration Deadline: For information or to sign up, e-mail or phone the chairperson by 1600 on the Friday before each cruise.

Chairpersons: Andrew Cross, 206-599-9454, andrewcross8@gmail.com

Date	Destination	Dinner
January 10-11	Port Madison	Potluck dinner
February 7-8	Port Orchard	Dinner at Doc's Marina Grill
March 7-8	Eagle Harbor	Potluck dinner
April 18-19	Gig Harbor	Dinner at Amy's on the Bay
May 23-24	Poulsbo	Dinner at Italian restaurant
July 3	Liberty Bay	Anchor raft-up w/potluck dinner

Leukemia Cup Regatta

Let's do something good with our great sport!

Seattle Yacht Club is a proud participant of the annual Leukemia Cup Regatta. There are plenty of worthy causes and top charities. Whether or not it's our particular personal cause, the point is to pick one for our community that fits with our style and is big enough to be noticeable and widely appreciated, and focus what we can do together.

The party at Elliott Bay Marina had over 300 people who enjoyed the food, the rum, the band, and the games. Our efforts over the last nineteen years, here and across the country, have raised over thirty-eight million dollars!

Boat owners and crew can participate just by registering and showing up for the casual format sailboat regatta and/or the party that evening. If interested, we'll attempt to match you with patients and their families to be your guests on the water for a much appreciated getaway. You will feel like you did something just by sharing what you're already doing.



Date: June 6, 2015 (Saturday)

Location and Schedule (all at Elliott Bay Marina):

Registration	1000 – 1300 (SYC station at Elliott Bay Marina)
Skipper's Meeting	1245 (SYC station at Elliott Bay Marina)
Regatta	1400 - 1700
Party	1700 - 2130

Elliott Bay Marina has offered free guest moorage for Friday and Saturday nights. Boats will likely be assigned to raft on the east side of dock N. Please contact the marina for availability and assignment at 206-285-4817 or VHF 78A.

Course: Two laps in Elliott Bay. Everyone is welcome to race or cruise.

Registration Donation: \$150 to the Leukemia and Lymphoma Society (includes two party tickets). Additional party tickets \$25.

Registration: Please register online at www.leukemicup.org/wa.

SYC Contact: Phil Calvert, 206-910-7977, phil.calvert@comcast.net

Notice of Race

SYC Sailboat Rendezvous & SYC Cruise & Snooze

Power boaters encouraged to attend

Sailboat Rendezvous is about SYC sailboat community with family events, please meet over at Pt Madison Saturday for the event. Cruise & Snooze is a fun race over to Port Madison, spend the night, and sail back the next day. No flying sails. Pursuit format starts so fewer boats start together. Super green box. Potluck dinner with more than enough to eat. Kids welcome.

Date:

Races A/B (Saturday/Sunday): June 27-28, 2015

Races C/D (Saturday/Sunday): September 12-13, 2015

Location: Puget Sound in the vicinity of Shilshole Bay. The start will be off Shilshole on Saturday and off Point Monroe on Sunday.

Course: The courses will be cruiser/racer and announced prior to racing.

Time of First Warning:

Races A and C (Saturdays): 1100

Races B and D (Sundays): 1200

Time Limit: 1700 each day

Classes to Race: Sailboats! Though helpful, you do not need a PHRF-NW rating to race. Performance handicaps will be assigned for this event as necessary.

Other Provisions:

- Notice of Race amended by SYC Notice of Race Addendum.
- No spinnakers or other flying sails may be used. Only one working sail may be flown on its stay at any time, except during sail changes.
- All races will be pursuit format with handicaps applied at the start.
- SYC members only event.

Awards: Special awards will be made at the conclusion of each Saturday race. Recipients will be selected by the chairpersons. The Cruise & Snooze Cannon Trophy will be awarded to the series overall winner.

Social Activities: GreenBox at 1700 on Saturday after racing. Dinner will follow at 1830. Main course is provided. When you sign up to attend, please let the front desk know whether you will bring a main dish, salad, or dessert for twelve people. A logger's breakfast will be served at 0800 on Sunday morning.

Registration Deadline:

Races A/B (Saturday/Sunday): June 18, 2015 (Thursday)

Races C/D (Saturday/Sunday): September 3, 2015 (Thursday)

Registration Fee: \$50 for A/B, \$50 for C/D. The fee provides for two adults per boat and \$15 extra for each additional adult on board to help pay for food. No charge for kids.

Chairpersons: Diane Haelsig, (425) 747-9822, diane@haelsig.com
Phil Calvert, 206-910-7977, phil.calvert@comcast.net

Commodore's Cruise (San Juan and Gulf Islands)

The Commodore's Cruise is a power and sail event! Tons of fun! Starts at Henry Island and ends at Oven's Island.

Dates: July 26 to July 31, 2015 (Sunday to Friday)

Sunday	Greenbox at Henry Island 1730 w/event schedule and info
Monday	Race #1 to Sydney, huge greenbox at Sydney Marina
Tuesday	Race #2 to Ganges, greenbox at outstation
Wednesday	Lay day, star raft in Montague Harbor
Thursday	Race #3 to Oven's Island, awards, barbeque, prizes
Friday	Lead sinker pancake breakfast

Registration: Please register by June 15 at the front desk at SYC.

Chairpersons: Phil Calvert, 206-910-7977, phil.calvert@comcast.net

Sunshine Coast Cruise (British Columbia)

This is a power and sail event. Destinations and anchorages selected will be weather dependent and large enough to accommodate all boats safely. Be prepared to anchor in 10 fathoms of water. We will raft as much as we can. This is an EXTREMELY COOL semi-official non-event event, meaning there is no charge.

This cruise starts after the Commodore's Cruise at Ovens Island and ends on the doorstep to Desolation Sound at the Cortes Island outstation. We will visit places around the Straits of Georgia rarely seen by SYCers like Lasqueti Island, Hornby Island, Comox, and Savary Island. Guests may arrive or depart by scheduled air service at Nanaimo and Comox. You can join or leave the cruise at any point.

Dates: August 1 to August 8, 2015 (Saturday to Friday, be prepared to be flexible)

Saturday	From Ovens Island to Nanaimo. Greenbox on <i>Panther</i> .
Sunday	Depart Nanaimo for Lasqueti. Greenbox.
Monday	Depart Lasqueti for Tribune Bay. Greenbox.
Tuesday	Lay day.
Wednesday	Depart Hornby for Comox Marina via Baynes Sound.
Thursday	Depart Comox for Savary Island or Gorge Harbor.
Friday	Depart Savary Island or Gorge Harbor for Cortez Island.

Chairpersons: Chris Warner and Pam Murray, 206-782-1277, panther@seanet.com

SYC Sailing School and Junior Race Team

The Sailing School and Junior Race Team offer small boat sailing for members and guests of all ages with an emphasis on junior sailing development.

Summer Sailing School

The Seattle Yacht Club has a long-standing tradition of providing an outstanding Junior Sailing School program for children in the Seattle area. We offer classes for children from 7-18 years of age with a wide variety of class options. Over 600 young sailors participate in a total of 40 classes over a ten week period each summer. The instructional staff is trained through US SAILING, and CPR and First Aid certified.

This year's program will run from June 22 through August 28, 2015. Classes run from 9:00 AM - 4:00 PM, Monday through Friday. Students can sign up for a week at a time.



Opti sailing in Portage Bay

Member Registration: SYC Members will be able to register from March 16-17 online, via fax, mail, or in person. After this period, the policy will be first-come, first-served whether member or non-member. We ask that you use your SYC membership number for billing purposes. Member prices include members' children, grandchildren, and junior members.

Non-member Registration: Guest registration will begin on Wednesday, March 18 from 8:30 AM - 6:00 PM in the Sailing Office, located near the south entrance to the Seattle Yacht Club Portage Bay clubhouse. Class availability will be on a first come, first-served basis. Registrations will also be accepted online, via mail, or fax.

Junior Race Team

The SYC Race Team invites aspiring young sailors to join in the fun, support, friendships, and camaraderie that develop from being a part of a nationally competitive sailing team. SYC Race Team sailors can take part in 75 scheduled practices and enjoy support from our coaching crew at seven regional regattas. Advanced sailors compete in both national and international events, and over the years, the SYC program has helped in the development of many Olympic class sailors as well.

Northwest Youth Race Circuit Schedule

Fleet Racing

- April 25-26 RVYC Kitten Cup Regatta, Vancouver, BC
Contact: James McDonald (sail_dir@royalvan.com)
- May 16-17 Steve Williams Regatta, Portland, OR
Contact: Dave Cannard (dave@netequality.org)
- July 11 - 12 CGRA WIND Youth Regatta, Cascade Locks, Oregon
Contact: Jarvis Brecker (jarvis@cgra.org)
- June 27-28 CGRA Opti Gorge Regatta, Cascade Locks, Oregon
Contact: Jarvis Brecker (jarvis@cgra.org)
- Aug 8 - 9 Bellingham YC Ski to Sea Youth Regatta
Contact: Scott Wilson (scotjwilson@gmail.com)
- Aug 22-23 SYC Northwest Junior Olympics
Shilshole Bay Marina, Seattle, Washington
Contact: Brian Ledbetter (brianl@seattleyachtclub.org)
- Sept 12-13 Jonny Adams Memorial Regatta, Port Madison, Washington
Contact: Stephanie Ahlquist (stephofcourse@aol.com)
- Oct 3-4 CYC/SSP Octoberfest, Seattle, Washington (Sand Point)
Contact:

Team Racing

- Aug 15-16 McCurdy Cup Jr. Team Race Championship
Hosted by Seattle Yacht Club at Sail Sand Point
Contact: Cameron Hoard (choard@gmail.com)

Tuesday Night Sailing

Come to the clubhouse on Tuesday Nights in the summer for sailing, casual races, dinner and games on the lawn! All of the small sailboats are available for SYC members and their guests, as well as members of the Race Team. Sailing Instructors will be on hand to assist participants on and off the water. Dinner is served on the lawn afterwards. Fun for all ages. Younger sailors are encouraged to pair up with parents or older Race Team members!! Sailing runs Tuesdays, June 23 to August 25, 5:00 to 7:00 PM.

High School Sailing at SYC

To help promote High School Sailing in Seattle and create a place for graduates of our sailing school to begin participating in the sport, we are now offering a membership to the SYC Race Team for the High School season.



Vanguard 15: multi-purpose, double-handed one design (fun too)

This program is open to all kids from 7th- 12th grade and does not require your school to form a team. We will mix and match sailors from all schools. Opti sailors are welcome to practice, but might not meet the grade requirement to race. This year we are providing practices at SYC twice a week during the spring season from March till late May. This will also include coaching at many local events (check <http://www.nwisa.hssailing.org> for the most up-to-date schedule).

Opti Green Fleet Program

Interested in taking the first step to becoming a racer? The Opti Green Fleet is the best place to start for kids ages 8-13. The group meets each summer on Wednesday evenings from 5:00 to 7:30 at SYC on Portage Bay. Using our club boats, you will learn the basics of racing, advanced rigging, and boat handling. A coach will also be on hand at three local regattas. Once you feel ready to head out to Shilshole and sail with the regular Opti Team, your fee can be forwarded toward the regular Race Team annual fee.

Adult Sailing Courses

Seattle Yacht Club's adult sailing sessions offer an excellent way to get out on the water and learn the basics of small boat sailing. Using the club's Vanguard-15's, 420's, Lasers, and J/22's the classes start with the basics including rigging, points of sail, sail trim, boat-handling, and boating safety. Students develop their skills

through on-the-water sessions, “chalk talk” discussions, and work in textbooks. Classes are open to all levels, and advanced sessions are offered for more experienced sailors ready to learn racing tactics.

Private Sailing Lessons

Enjoy the individual attention and customized instruction of private lessons at Seattle Yacht Club. Whether you're looking to learn from scratch, refresh your basic sailing skills, or learn more advanced techniques, private lessons provide the opportunity to learn what you want when you want.



Double-handed 420 in Shilshole Bay

The Small Boat Fleet at SYC

SYC is committed to our program to grow boating with the acquisition and maintenance of our small boat fleet and support boats, including twenty Lasers, twenty-nine Optimists, one 29er, twelve Vanguard 15's, eight 420's, five Avon inflatables, six Boston Whalers, one Grady White, and the 40' m/v *Portage Bay* trawler.

The **Optimist** is an eight foot, kid-sized single-handed dinghy that is easy to manage and fun to sail. The "Opti" is a great boat for juniors to begin sailing, and advance to racing easily.

The **Vanguard-15** is the primary training boat at SYC. This stable, double-handed boat with a main and jib is the national standard for novice and advanced sailors to master the basics and to develop teamwork.

The Olympic-Class **Laser** is a high performance single-handed dinghy for intermediate and advanced sailors. It is a great platform to build boat-handling and racing skills. This boat has two different size sails, allowing us to tailor the boat to the weight of the sailor.

The **420** is an ideal entry-level training boat for all ages. This is a double-handed boat with main and jib. Advanced sailors can rig the spinnaker and trapeze for an exhilarating thrill.

The *new* **J/22** fleet is a closely match set of 6 keelboats available to all members for a small usage fee. Match Racing, Team Racing, one-design regattas, or an afternoon sail are all perfect uses for our new fleet.



Sailing Office Contact Information

The Sailing Office is located at the SYC Portage Bay clubhouse on the bottom floor near the south entrance. Please contact the Sailing Office personnel for any questions or information.

Brian Ledbetter, Sailing Director

brianl@seattleyachtclub.org

Angela Frost, Sailing Programs Coordinator

angela@seattleyachtclub.org

Cameron Hoard, Race Team Coach

choard@gmail.com

Phone: 206-926-1011

Fax: 206-324-8784

Awards and Recognition

Thank you and congratulations to everyone who volunteered and competed.

Junior Sailing Awards

<u>Trophy</u>	<u>Event</u>	<u>Recipient</u>
Bill Burdick Trophy	Junior Sailor of the Year	Owen Timms
Ernest Gann Award	Outstanding Jr. Instructor	Katie Cramer
Captain Lovejoy Trophy	Most Improved Sailor	Abbie Carlson
Joe Duthie Trophy	Top Girl- Jr. Olympics	Talia Toland
Stimson Trophy	Top Boy – Jr. Olympics	Justin Skene
Brent Nichols Trophy	Outstanding Sportsmanship / Inspirational Sailor	Jack Holbrook
Larry McCarthy Trophy	Perseverance	Hunter Hong
Club Championship	Top Crew	Mirmattia Ottaviani
	Top Skipper	Talia Toland

Outstanding Achievement in Sailing

<u>Trophy</u>	<u>Event</u>	<u>Recipient</u>
Outstanding Cruising Family Trophy	Cruising Sailboat of the Year	<i>Appa</i> , Marcus and Jennifer Reichert
Ruptured Eardrum Trophy	Outstanding Race Committee Member	Chuck Stephens
Bob Gibbons Trophy	One-Design Sailor of the Year	Helena Scutt
Lake Union Sailing Trophy	Outstanding Crew Member	Trish Larson
Golden Potlatch Trophy	Outstanding Cruiser/Racer	<i>Yachtzee</i> Andrew and Jill Cross
Kelly O'Neil Henson Trophy	Best SYC Swiftsure	<i>Glory</i> John Buchan
Bates McKee Memorial Trophy	Sailboat of the Year	<i>Glory</i> John Buchan
Marymont Trophy	Sailor of the Year	W. Andrew Loe III
Perpetual Sailboat Trophy	William W. Heylman Memorial Award	Paul Thorlakson

Sailing Performance Awards

Tri-Island Series

Smith Island Race

Jerry Bryant Trophy (Long)	William Weinstein	<i>Terremoto</i>
Old Salt Trophy (Short)	Tom Kerr	<i>Corvo</i>
Lady Medina (C/R)	Brian Berg	<i>Magician</i>
IRC	John Buchan	<i>Glory</i>

Vashon Island Race

Salt Chuck Trophy (L)	William Weinstein	<i>Terremoto</i>
Rawson Trophy (S)	Fred Creitz	<i>Flim Flam</i>
Cruiser/Racer (C/R)	Kim Bottles	<i>Francis Lee</i>
IRC	John Tenneson	<i>Jedi</i>

Blake Island Race

Blake Island Trophy (L)	William Weinstein	<i>Terremoto</i>
Blake Island-Short (S)	Allen Johnson, Mike Brooks	<i>Pegasus</i>
Gamwell Trophy (C/R)	Bill Elmer	<i>Anomaly</i>
IRC	Lou Bianco	<i>Artemis</i>

Tri Island Series Overall

Walt Little Trophy (L)	William Weinstein	<i>Terremoto</i>
First President's Trophy (S)	Tom Kerr	<i>Corvo</i>
Tri-Island Cannon (C/R)	Mike Milburn	<i>Sunshine</i>
IRC	Lou Bianco	<i>Artemis</i>

Mark Mayer

Mark Mayer Bowl	Jim Marta	<i>Eye Candy</i>
Mark Mayer Trophy	Scott & Susan Burbank	<i>RockOn!!!</i>
Cruiser/Racer	Phil Calvert	<i>Runaway</i>
J/22	Dave Ferguson	<i>Jinx</i>
Thunderbird	James Frazier	<i>Valkyrie</i>

NOOD Regatta

J/105	Jerry Diercks	<i>Delirium</i>
J/80	Bryan Rhodes	<i>Crazy Ivan</i>
Farr 30	Andrew Hamilton	<i>Through</i>
International 6 Meter	Rodger Phillips	<i>Frenzy</i>
Viper 640	Garrett Johns	<i>Kaa</i>

J/24	Pat Dore/Chris Snow	<i>Baba Louie</i>
Thunderbird	Craig Burnell	<i>Predator</i>
Melges 24	Kevin Welch	<i>Mikey</i>
J/70	Sail Northwest	<i>Just Listed</i>
San Juan 21	Marc Vander Schalie	<i>Kermit</i>
Merit 25	Todd Bassham	<i>Nausicaa</i>
Formula 18	Ben Colwell	<i>Rum Line</i>
Snipe	Katia Smith	<i>MindRacer</i>
Laser	Michael O'Brien	<i>Feats of Strength</i>
Star	Derek DeCouteau	<i>Misty</i>
Hoot	Todd Twigg	<i>ular</i>
North Rally Class	Paul Kalina	<i>Perfectly Strange</i>

NORPAC

Haida Trophy	Steve Leonard	<i>Flyer</i>
--------------	---------------	--------------

Whidbey Island Race Week (Best SYC Finish)

Xzora Trophy	John Hoag	<i>Shrek (1st Place)</i>
--------------	-----------	-------------------------------------

McCurdy Trophy Regatta

1 st Place	Meydenbauer YC
2 nd Place	Willamette Sailing Club
3 rd Place	Seattle Yacht Club

Northwest Jr. Olympics

FJ	Hanna Brush/ Thomas Hope	WSC
Laser	Blake Bentzen	CYC
Laser Radial	Alexa Ripple	WSC
Optimist (Blue)	Casey Pickett	WSC
Optimist (Red)	Justin Skene	SYC
Optimist (White)	Dieter Creitz	SYC

New York Yacht Club Invitational Cup US Qualifying Series 2014

3 rd Place	W. Andrew Loe III Lindsay Bergan Anthony Boscolo Jay Renehan	Seattle YC
-----------------------	---	------------

Cruise & Snooze

Cruising

Racing

Overall (Cannon Award)

Bill Elmer

Bill Elmer

*Anomaly**Anomaly***Star & Bar**

PHRF 1

Farr 30

J/105

PHRF 4

PHRF 5

Charlie Macaulay

Chris Tutmark

Erik Kristen

Alex Krawarik

Alexia Fischer

*Absolutely**Patricia**Jubilee**Rogue**Zipper***Grand Prix**

Cadranell Trophy

Robert H. Perry Trophy

Charles Ross Trophy

Griffiths Trophy

Kennel Windpennant

Farr 30

Cruiser/Racer

John Buchan

William Weinstein

Charlie Macaulay

Brad Butler

Y. Ken Chin

Lance Staughton

Joe Williams

*Glory**Terremoto**Absolutely**Uno**Kowloon**Bat out of Hell**White Wing*

Appendix

In this section:

- Sailing Program Leadership Team
- Sailing Program Contacts

Sailing Program Leadership Team

Commodore	Roger Anderson
Vice Commodore	Don Glockner
Rear Commodore	Lynn Wingard
Fleet Captain Sail	Phil Calvert
Cruising Activities Chairman	Andrew Harvilla
Junior Commodore	Bryce Baker
Junior Vice Commodore	Cameron Ferguson
Junior Rear Commodore	Tera Richardson
Junior Secretary	Kit Stoll
Junior Advisor	Holly Huttunen, PJ Baker
Race Committee (as of prior year)	Roman Budzianowski, Phil Calvert, Pat Crockett, Bill Elmer, Dave Ferguson, Rhonda Halfman, Denny Johnson, Keith Johnson, Chuck Stephens, Brian Ledbetter, Angela Frost, Jim Medley, Mike Milburn, Roger Pawley, Lyn Pawley, Warren Pawley, Charlie Pelly, Fred Pot, Karole Sherlock, Mike Sherlock, Seth Siegal, Gordon Stoll, Paul Thorlakson, Paul Walchenbach, Dan & Lee Rees
Sailing Director	Brian Ledbetter

Sailing Program Contacts

Fleet Captain Sail	Phil Calvert	Phil.Calvert@comcast.net 206-910-7977
Cruising Activities Chair	Andrew Harvilla	aharvilla@msn.com 425.357.8045
Director Racing Operations	Karole Sherlock	karolesherlock@gmail.com 425-941-4617
Protest Committee Chair	Jim Medley	jim.medley@comcast.net 206-605-9255
PHRF-NW Handicapper	Iain Christenson	iainchristenson@gmail.com 425.941.8652
Mini 12 Fleet Chair	Robert Hale	Surprise.37@hotmail.com 425.885.6912
T-37 Fleet Chair	Allan Van Ness	van.ness444@gmail.com 206-920-2854
Sailboat Dinner Programs	Andrew Harvilla	aharvilla@msn.com 425.357.8045
SYC Sailing Director	Brian Ledbetter	brianl@seattleyachtclub.org 206-325-1000

See Notices of Race for individual event chairpersons.



Madrona approaching West Point in the Vashon Island Race.

Please thank our sponsors for supporting sailing through SYC





www.SeattleYachtClub.org