



Seattle Yacht Club

Established in 1892

SAILBOAT RACE BOOK

2013





Sachem – Seattle Yacht Club 2012 Sailboat of the Year

Seattle Yacht Club Sailboat Race Book 2013

1807 East Hamlin Street
Seattle, Washington 98112

www.seattleyachtclub.org

SYC Front Desk	206.325.1000
Sailing Office	206.926.1011
Sailing Office Fax	206.324.8784

Table of Contents

Welcome to the 2013 Sailing Season.....	1
Sailboat Activity Calendar	2
Race Registration Procedure.....	3
Registration Checklist.....	4
SYC Sailboat Racing Program.....	5
Overview of Sailboat Racing Events	5
SYC Notice of Race Addendum.....	7
Notice of Race SYC Tri-Island Protection Island Race	10
Notice of Race SYC Mark Mayer Regatta	11
Notice of Race SYC Tri-Island Vashon Island Race.....	12
Race Information Sperry Top-Sider NOOD Regatta	13
Notice of Race SYC Tri-Island Blake Island Race.....	14
Notice of Race SYC Jack & Jill Race	15
Notice of Race SYC Star & Bar Regatta.....	17
Race Information SYC Grand Prix Invitational Regatta	18
SYC Deception Class Mini-12 Fleet.....	21
SYC Sailboat Cruising Program	23
Overview of Sailboat Cruising Events	23
Winter and Spring Power/Sail Mini Cruises	24
Leukemia Cup Regatta	25
Notice of Race SYC Cruise & Snooze.....	26
Commodore's Cruise (San Juan and Gulf Islands).....	27
Sunshine Coast Cruise (British Columbia)	27
SYC Sailing School and Junior Race Team	28
Summer Sailing School	28
Junior Race Team	29
Tuesday Night Sailing.....	29
High School Sailing at SYC.....	30
Opti Green Fleet Program	30
Adult Sailing Courses.....	30
Private Sailing Lessons.....	31
The Small Boat Fleet at SYC.....	31
Sailing Office Contact Information	32
Awards and Recognition	33
Junior Sailing Awards.....	33
Outstanding Achievement in Sailing.....	33
Sailing Performance Awards	34
Appendix.....	37
Sailing Program Leadership Team.....	37
Sailing Program Contacts	38
Puget Sound Sailboat Safety Regulations	39
Buoy Course Marks (position relative to R/C).....	40
Geographic Marks (position based on location)	41

Welcome to the 2013 Sailing Season



The Seattle Yacht Club organizes a broad range of public events to promote boating in the Pacific Northwest and help people find those unique life experiences available under sail. Why do we do it? Because a world with more boating and sailing is the world we want to live in! We feel so good about it we want to open the community and share the lifestyle with more people.

Our events happen because particular people decide to take action, as follows: (1) A couple dozen member and guest volunteers plan and run the events, (2) the members of Seattle Yacht Club and their leadership choose to allocate coveted funds into programs that mitigate expenses but don't cover their total costs, and (3) hundreds of people get their families and friends on the water and into our events. Whichever role you play, thank you! Your participation makes more sailing happen and enriches the lives of everyone involved.

Fred Pot is our Cruising Activities Chair providing his energetic leadership on cruising events and sailboat dinners. The dinners are scheduled for the second Thursday most months and feature speakers on sailing topics. This is a great place to meet other cruisers and racers and introduce guests to the Club.

Karole Sherlock is our Director of Racing Operations. Under Karole's leadership, volunteers will have excellent instruction on specific race committee duties. Please contact Karole to get out on the water as a member of the race committee team providing top level racing services to our regatta participants.

SYC is continuing our longstanding involvement in the Leukemia Cup, with a low-key race/parade around Elliott Bay and a huge party on site at Elliott Bay Marina. In parallel with your individual causes, whatever they may be, please consider joining your fellow boaters at this fun and meaningful event. This is also a perfect way to make use of your boat and help you develop your crew into a team. Just being there is all you have to do to support our community.

The T-37 remote control sailboat program lead by Allan Van Ness has quickly become one of the hottest sailing fleets anywhere. They have regular casual races and some more serious championships. Anyone can play, the cost of entry is low, and the community is welcoming. Contact Allan to get involved.

The cruiser/race class is key to the soul and future of our sport. These boats sail with fewer crew on shorter, relaxed courses while the more race-optimized boats sail longer courses. Start your season by signing up for Tri-Island.

The Sailboat Committee meetings are at 6:30 p.m. on the first Thursday of most months. Whatever your interest in sailing, please come and lend a hand.

Brian Watkins,
Fleet Captain Sail

Sailboat Activity Calendar

JANUARY

- 5-6 Mini-Cruise – Port Madison
- 10 Sailboat Dinner
- 26-27 Mini-Cruise – Eagle Harbor

FEBRUARY

- 7 Sailboat Business Meeting
- 6 Sailboat Dinner

MARCH

- 2-3 High School Opener Regatta
- 2-3 Mini-Cruise – Gig Harbor
- 7 Sailboat Business Meeting
- 14 Sailboat Dinner

APRIL

- 4 Sailboat Business Meeting
- 11 Sailboat Dinner
- 13-14 Mini-12 Interclub Regatta
- 20-21 Mini-Cruise – Port Orchard
- 27-28 Protection Island Race

MAY

- 4 Opening Day
- 5 Mark Mayer Regatta
- 9 Sailboat Business Meeting
- 11 Vashon Island Race
- 17-19 NOOD Regatta
- 23 Sailboat Dinner (w/Power)
- 25-26 Mini-Cruise – Poulsbo

JUNE

- 1 Blake Island Race
- 6 Sailboat Business Meeting
- 8 Leukemia Cup
- 22-23 Cruise & Snooze A/B

JULY

- 3 Mini-Cruise – Liberty Bay
- 21-26 Commodore's Cruise
- 27 SYC Jack & Jill Race

AUGUST

- 17-18 McCurdy Trophy Regatta
- 24-25 Junior Olympics

SEPTEMBER

- 5 Sailboat Business Meeting
- 12 Sailboat Dinner
- 7-8 Cruise & Snooze C/D
- 14-15 Star & Bar Regatta

OCTOBER

- 10 Sail/Power Dinner
- 24 Business Meeting (at CYC)
- 25-27 Grand Prix Regatta

NOVEMBER

- 7 Sailboat Business Meeting
- 15 Annual Sailing Party

DECEMBER

- 5 Sailboat Business Meeting
- 12 Sail/Power Gift Exchange

Race Registration Procedure

Online Registration

Online race registration is available from the Seattle Yacht Club website at www.seattleyachtclub.org under "Sailing / Regattas".

Entry Forms

Race entry forms are available at the Seattle Yacht Club Portage Bay clubhouse front desk. Please return your completed form with entry fees to the attention of the Sailing Office at the Seattle Yacht Club.

Deadlines

Registrations must be submitted online or received by Seattle Yacht Club by close of business (normally 1700 hours) on the entry deadline for each race. The deadline is typically the Thursday preceding the race unless otherwise indicated in the Notice of Race. Registrations accepted at the discretion of the race committee after the deadline may be assessed a \$20 late fee.

Season Fee Package

A season fee is available for the Tri-Island Series, SYC Jack & Jill, Mark Mayer, and Star & Bar. The deadline is the deadline for the first race in the package.

Contact

For registration issues, please contact the SYC Sailing Director, Brian Ledbetter, in the SYC Sailing Office.

Phone: 206.926.1011. Fax: 206.324.8784. Email: brianl@seattleyachtclub.org



Thank you for racing and making our sport stronger. Every boat counts!

Registration Checklist

Date	Event	Cruiser/ Racer	Entry Fee	Deadline ²	Enter
(6 events)	Season Package (TI, SYC J&J, MM, S&B)	Partial	\$255	April 25	<input type="checkbox"/>
(3 events)	Tri-Island Package	Yes	\$150	April 25	<input type="checkbox"/>
April 27	Protection Island (Tri-Island #1)	Yes	\$60 ¹	April 25	<input type="checkbox"/>
May 5	Mark Mayer	Yes	Free	May 3	<input type="checkbox"/>
May 11	Vashon Island (Tri-Island #2)	Yes	\$60 ¹	May 9	<input type="checkbox"/>
May 17-19	Sperry Top-Sider NOOD Regatta (sailingworld.com)		See NOR	May 6	<input type="checkbox"/>
June 1	Blake Island (Tri-Island #3)	Yes	\$60 ¹	May 30	<input type="checkbox"/>
June 8	Leukemia Cup	Yes	\$150	ASAP	<input type="checkbox"/>
June 22-23	Cruise & Snooze A/B*	Yes	\$50	June 20	<input type="checkbox"/>
July 21-26	Commodore's Cruise*	Yes	\$150	June 15	<input type="checkbox"/>
July 27	SYC Jack & Jill		\$40 ¹	July 25	<input type="checkbox"/>
Sept 7-8	Cruise & Snooze C/D*	Yes	\$50	Sept 5	<input type="checkbox"/>
Sept 14-15	Star & Bar Regatta		\$105 ¹	Sept 12	<input type="checkbox"/>
Oct 25-27	Grand Prix Invitational Boats under 30' 30' to under 40' 40' and over	Yes	\$135 \$170 \$205	Oct 23	<input type="checkbox"/>

¹ Season Package for Tri-Island Series, SYC Jack & Jill, Mark Mayer, and Star & Bar is available for \$255. Tri-Island Series Package is available for \$150.

² Registrations received after close of business on deadline may be assessed a \$20 late fee.

*Requires membership for use of outstations.

SYC Sailboat Racing Program

With events ranging from one-design championships to the longer-distance Tri-Island races, Seattle Yacht Club actively promotes a variety of racing here in the great Pacific Northwest. In this section:

- Overview of Sailboat Racing Events
- SYC Notice of Race Addendum
- SYC Smith/Protection Island Race
- SYC Mark Mayer Regatta
- SYC Vashon Island Race
- Sperry Top-Sider NOOD Regatta
- SYC Blake Island Race
- SYC Jack & Jill Race
- SYC Star & Bar Regatta
- SYC Grand Prix Invitational Regatta

Overview of Sailboat Racing Events

Hosted and Away Regattas

Each year we look for a regional or national regatta to host locally, or we send a team to a major event hosted outside our area. This year, thanks to the successful qualifying team in 2012, Seattle Yacht Club has been invited and will be competing in the New York Yacht Club Invitational Cup in 2013, an exclusive event with four teams selected from the US qualifier series and teams representing twenty other countries. See our website for additional information about our campaign to represent Pacific Northwest sailors in this event.

Tri-Island Series

The Tri-Island series continues the tradition of offering longer courses to test your stamina and strategic knowledge of Puget Sound. At the end of the series, the club will open its doors to all those who have participated for an awards party. A shorter Cruiser/Racer course will be offered for each race.

Smith/Protection Island Race

Alternating between Smith Island and Protection Island each year, these courses are our longest race for the year, with several challenging decision points and the opportunity to experience more wind, waves, and current conditions than normal.

Vashon Island Race

The Vashon Island course is one of the most popular races with several distinct racing phases. Get ahead and go for a breakaway, or, if not so fortunate, hope to bring the wind to your competitors waiting at the next corner. These tactical courses will take you south with scenic views of Elliott Bay and Mt. Rainier.

Blake Island Race

Whether you're testing your mettle or rolling the dice, you select which way to round Blake Island. Finish off Elliott Bay Marina with series awards party at the Seattle Yacht Club Elliott Bay station.

Mark Mayer Regatta

The Mark Mayer Regatta is coordinated with the Opening Day weekend. The course is just north of the Evergreen Point Bridge on Lake Washington. A post-race party will be at the Seattle Yacht Club Portage Bay clubhouse.

Sperry Top-Sider NOOD Regatta

The National Offshore One Design (NOOD) Regatta, sponsored by Sperry Top-Sider and organized by Sailing World Magazine, is co-hosted by Seattle Yacht Club and Corinthian Yacht Club of Seattle. The regatta celebrates tight buoy racing and May is a great month for sailing. Make sure your one-design or level-rated class is signed up early! Each night will feature a post-race party.

SYC Jack and Jill Race

The SYC Jack & Jill is part of the Puget Sound Jack & Jill interclub series. The SYC race is out of Elliott Bay Marina with a social at our station afterwards and free guest moorage Friday and Saturday for an in-town getaway.

Star & Bar Regatta

This two-day regatta tests around-the-buoys racing skills, with September providing a good chance for dependable wind and warm weather on the last weekend of the summer. Classes for both one-design and PHRF will be available. Post-race parties each day after racing.

Grand Prix Invitational Regatta

The season's racing activities culminate with the Grand Prix Invitational Regatta. Boats must qualify for this prestigious invitation-only event. Whole one design fleets with representative qualifiers may also be invited. Grand Prix primarily tests buoy racing skills and, if conditions are right, middle distance racing skills over a three-day period with parties every evening.



Cruiser/Racer competition at Tri-Island, Mark Mayer, and Cruise & Snooze

SYC Notice of Race Addendum

The SYC Notice of Race Addendum is common language that a particular Notice of Race may specifically incorporate. If a Notice of Race and the SYC Notice of Race Addendum are in conflict, the Notice of Race shall have precedence.

The organizing authority is the Seattle Yacht Club (SYC).

1 Rules

- 1.1 This regatta will be governed by the rules as defined in the Racing Rules of Sailing (RRS).
- 1.2 The prescriptions of US Sailing to the following rules shall apply: 34, 40, 48.1, 56, 60, 61.4, 63.2, 63.4, 64.3(b), 67, 70.5(a), 76.1, 82, 86.3, 88.2, Appendix G, R, and T. The text of these prescriptions is available from the US Sailing website at raceadmin.ussailing.org/rules/prescriptions.
- 1.3 Other changes to the rules may be noted elsewhere in the Notice of Race or Sailing Instructions. If the Notice of Race and Sailing Instructions are in conflict, the Sailing Instructions shall have precedence.
- 1.4 Changes to the Notice of Race will be available from the Seattle Yacht Club website at www.seattleyachtclub.org or, if not available from the website, on the notice board at the Seattle Yacht Club south entrance.

2 Eligibility and Entry

- 2.1 Entrants must register online at www.seattleyachtclub.org, or by form delivered to Seattle Yacht Club, and pay appropriate fees by the registration deadline. Registration after the deadline may be accepted at the discretion of the organizing authority and may require an additional late fee.
- 2.2 A boat wishing to use sails with identification different from her own must receive permission from the organizing authority by the registration deadline or when her late registration is accepted. This changes RRS 77.
- 2.3 A boat racing in a handicap class must ensure that her correct rating is issued and recorded by the class organization by the registration deadline or when her late registration is accepted. Boats participating without a valid class certificate will not be entered or scored and her entry fee may not be refunded.
- 2.4 A change in a boat's handicap class rating will take effect on the day it is recorded by the class organization. Changes are not retroactive. When a boat's rating changes between races that are part of a series, the boat shall remain in the same class in which she started the series.
- 2.5 A boat rated by her handicap class in consideration of water ballast may use water ballast as rated. This changes RRS 51.

3 Operating and Equipment Requirements

- 3.1 Sailing is an activity that has an inherent risk of damage and injury. Competitors in this event are participating entirely at their own risk. See RRS 4, Decision to Race. The responsibility for a boat's decision to participate in a race or to continue racing is hers alone. The race organizers (organizing authority, race committee, protest committee, host club, sponsors, or any other organization or official) will not be responsible for

damage to any boat or other property or the injury to any competitor, including death, sustained as a result of participation in this event. By participating in this event, each competitor agrees to release the race organizers from any and all liability associated with such competitor's participation in this event to the fullest extent permitted by law.

3.2 A boat racing in a handicap class must comply with one of the two following sets of equipment requirements, (a) or (b):

(a) *Pacific International Yachting Association (PIYA) Special Regulations Governing Minimum Equipment and Accommodation Standards* (PIYASR) according to the category requirement identified in the Notice of Race. The text of these regulations is available from the PIYA website at www.piyasailing.net. The following changes apply:

(1) PIYASR 3.8 interpreted that a radar reflector with any dimension less than 6 inches does not meet the requirement.

NOTICE: The PIYASR option may not be available for 2014 season.

(b) *ISAF Offshore Special Regulations (OSR)*, without US Sailing prescriptions, according to the category requirement identified in the Notice of Race. The text of these regulations is available from the International Sailing Federation (ISAF) website at www.sailing.org/documents/special-regs. The following changes apply to OSR Categories 3 and 4:

(1) OSR 3.02.1, 3.11, 3.19, and 3.22 not required for boats under 9 meters or boats under 12 meters with crew torso position inboard and mostly below the local sheerline except briefly to perform a necessary task.

(2) OSR 3.12 not required.

(3) OSR 3.14 not required for boats under 9 meters without lifelines or boats under 12 meters without lifelines with crew torso position inboard and mostly below the local sheerline except briefly to perform a necessary task.

(4) OSR 3.27.5 not required for permanently sealed, non-serviceable LED fixtures.

(5) OSR 3.28.1 required as in Category 3. If using outboard motor, it shall be on its operating mount and easily inserted into the water for immediate use including during severe sea and wind conditions.

(6) OSR 3.28.3 required as in Category 3 and (b) duration requirement changed to 6 hours.

(7) OSR 3.29.1 (a)(i) changed to "an emergency antenna" and (b)(ii) not required.

(8) OSR 4.04.2 (c) not required.

(9) OSR 4.06.1 each anchor required must include commercially manufactured anchor which meets the anchor manufacturer's recommendations based on the specifications of the vessel, and dedicated suitable rode which is at least 150' in length which includes at least one half boat length of suitable chain.

- (10) OSR 4.07.1 (b) changed to "two watertight flashlights".
 - (11) OSR 4.10.1 (a)(iii) radar reflector must have a minimum dimension of 150 mm (6 inches) or greater.
 - (12) OSR 4.14 not required.
 - (13) OSR 4.26.4 (f) and (g) not required.
 - (14) OSR 5.01.1 (a) and (b) replaced by US Sailing prescription to RRS 40, (c) required from one hour before sunset until sunrise.
- 3.3 Boats must comply with U.S. Coast Guard regulations.
 - 3.4 Boats must be operated in accordance with the Puget Sound Sailboat Safety Regulations, available in the appendix of this Race Book.
 - 3.5 The race committee may inspect a boat any time before or after racing for compliance with requirements.
 - 3.6 Penalties under SYC Notice of Race Addendum 3 may be less than disqualification. This changes RRS 64.1.
- 4 Scoring
 - 4.1 The time limit is the maximum allowable time from each boat's starting signal to her finish time or a time of day. Boats that do not finish within their time limit will be scored Did Not Finish (DNF). This changes RRS 35.
 - 4.2 A boat that did not start (DNC, DNS, OCS), did not finish (DNF), retired (RET), or is disqualified (DSQ, DNE, DGM, BFD) will be scored the number of finishers plus one. This changes RRS A4.2 and A9.
 - 5 Sailing Instructions
 - 5.1 Sailing Instructions will be available by the Thursday before the first race from the Seattle Yacht Club website at www.seattleyachtclub.org or, if not available from the website, on the notice board at the Seattle Yacht Club Portage Bay clubhouse south entrance.



m/v Portage Bay

Notice of Race

SYC Tri-Island Protection Island Race

Date: April 27, 2013 (Saturday)

Location: Northern Puget Sound, Admiralty Inlet, and southeastern Straits of Juan de Fuca. The starting line and finishing line will be in Shilshole Bay between Meadow Point and the Shilshole Bay Approach Buoy.

Course:

Long Course: Start by leaving the starting mark buoy to port, round Protection Island to starboard, and finish by leaving the finishing mark buoy to port.

Short Course: Start by leaving the starting mark buoy to port, round Double Bluff Lighted Buoy 1 (LL #16525) to port, and finish by leaving the finishing mark buoy to port.

Sport Boat Course: Same as short course (scored separately).

Cruiser/Racer Course: Start by leaving the starting mark buoy to port, round a temporary mark located off Edmonds at approximately 47° 52.8' N, 122° 25.2' W (47.880N 122.420W) to port, and finish by leaving the finishing mark buoy to port.

Time of First Warning: 0900

Time Limits:

Long Course:	30 hours
Short Course / Sport Boat Course:	12 hours
Cruiser/Racer Course:	8 hours

Classes to Race: PHRF-NW. Other classes of at least five boats may apply.

Equipment Requirement Category:

Long Course:	PIYASR II or OSR 3
Short Course / Sport Boat Course:	PIYASR III or OSR 4
Cruiser/Racer Course:	PIYASR III or OSR 4

Other Provisions:

- Notice of Race amended by SYC Notice of Race Addendum.
- The short course is available to boats rating 75 PHRF and slower. The sport boat course is open to boats 33 feet and less rating faster than 75.
- A shortened course option will be available for boats that take their time at a designated shortened course option finishing line. Boats using this option will be considered finishers and will be scored in class and overall based on their time and the distance for the shortened course starting immediately behind boats finishing the full course.
- This race is part of the SYC Tri-Island Series. There will be no scoring exclusions for the series. This changes RRS A2.

Awards: 1st overall on each course. For the Tri-Island Series, 1st overall per course and 1st, 2nd, 3rd in class. Awards will be presented at the awards party.

Social Activities: The series Awards Party will be at the SYC station at Elliott Bay Marina from 5 to 9 PM after the Blake Island race.

Registration Deadline: April 25, 2013 (Thursday)

Registration Fee: \$60 (or \$150 for SYC Tri-Island Series)

Chairpersons: Rhonda Halfman, 425-246-3612, rhondaha@gmail.com

Mike Milburn, 206-780-2525, milburn69802@msn.com



Young sailors waiting for the Shilshole wind to come up at the SYC Jr. Olympics

Notice of Race SYC Mark Mayer Regatta

Date: May 5, 2013 (Sunday)

Location: Lake Washington north of the SR520 Bridge. The start and finish will be in the area between Webster Point, Hunts Point, and Sand Point.

Course: The courses will be as designated in the Sailing Instructions.

Time of First Warning: 1200

Time Limit: 4 hours

Classes to Race: PHRF-NW. Other classes of at least five boats may apply.

Other Provisions: Notice of Race amended by SYC Notice of Race Addendum.

Awards: 1st, 2nd, and 3rd place in class

Social Activities: Party immediately after the race at Seattle Yacht Club.

Registration Deadline: May 3, 2013 (Friday)

Registration Fee: Free!

Event Chairperson: Dan Krier, 206-323-2405, dan@marinesc.com

Notice of Race

SYC Tri-Island Vashon Island Race

Date: May 11, 2013 (Saturday)

Location: Puget Sound. The starting line and finishing line will be in Shilshole Bay between Meadow Point and the Shilshole Bay Approach Buoy.

Course:

Long Course: Start by leaving the starting mark buoy to port, round Maury Island and Vashon Island to starboard, and finish by leaving the finishing mark buoy to port.

Short Course: Start by leaving the starting mark buoy to port, round a temporary buoy north of Point Robinson at approximately 47° 24.0' N, 122° 23.0' W (47.400N 122.383W) to port, and finish by leaving the finishing mark buoy to port.

Sport Boat Course: Same as short course (scored separately).

Cruiser/Racer Course: Start by leaving the starting mark buoy to port, round a temporary buoy north of Blake Island at approximately 47° 33.6' N, 122° 30.0' W (47.560N 122.500W) to port, and finish by leaving the finishing mark buoy to port.

Time of First Warning: 0900

Time Limit:

Long Course: 19 hours

Short Course / Sport Boat Course: 12 hours

Cruiser/Racer Course: 7 hours

Classes to Race: PHRF-NW. Other classes of at least five boats may apply.

Equipment Requirement Category:

Long Course: PIYASR II or OSR 3

Short Course / Sport Boat Course: PIYASR III or OSR 4

Cruiser/Racer Course: PIYASR III or OSR 4

Other Provisions:

- Notice of Race amended by SYC Notice of Race Addendum.
- The short course is available to boats rating 75 PHRF and slower. The sport boat course is open to boats 33 feet and less rating faster than 75.
- A shortened course option will be available for boats that take their time at a designated shortened course option finishing line. Boats using this option will be considered finishers and will be scored in class and overall based on their time and the distance for the shortened course starting immediately behind boats finishing the full course.
- This race is part of the SYC Tri-Island Series. There will be no scoring exclusions for the series. This changes RRS A2.

Awards: 1st overall on each course. For the Tri-Island Series, 1st overall per course and 1st, 2nd, 3rd in class. Awards will be presented at the awards party.

Social Activities: The series Awards Party will be at the SYC station at Elliott Bay Marina from 5 to 9 PM after the Blake Island race.

Registration Deadline: May 9, 2013 (Thursday)

Registration Fee: \$60 (or \$150 for SYC Tri-Island Series)

Chairpersons: Rhonda Halfman, 425-246-3612, rhondaha@gmail.com
Mike Milburn, 206-780-2525, milburn69802@msn.com



What an amazing sport

Race Information

Sperry Top-Sider NOOD Regatta

Seattle Yacht Club and Corinthian Yacht Club of Seattle will be hosting the National Offshore One Design (NOOD) Regatta in Seattle. The information below is subject to change. Deadline for classes to form is May 6, 2013 (Monday).

Dates: May 17-19, 2013 (Friday, Saturday, and Sunday)

Classes to Race: One design or level rated classes, as follows:

- Keelboat classes may include Santana 20, San Juan 24, Thunderbird, Star, Moore 24, J/24, 6 Meter, Etchells, J/105, Melges 24, J/109, Farr 30, and other keelboat classes with a prospective minimum of 7 boats registered.
- Centerboard classes may include Laser, Laser Radial, Snipe, Vanguard 15, Tasar, International 14, Thistle, 505, 49er, A-Cat, and other centerboard classes with a prospective minimum of 7 boats registered.

Registration and Information: www.sailingworld.com

Contacts: Roger Pawley, 425-890-2751, sailrap@msn.com
Steve Travis, 425-753-2701, stravis998@aol.com

Notice of Race

SYC Tri-Island Blake Island Race

Date: June 1, 2013(Saturday)

Location: Puget Sound. The starting line will be in Shilshole Bay between Meadow Point and the Shilshole Bay Approach Buoy. The finishing line will be in the northern part of Elliott Bay off the Elliott Bay Marina breakwater.

Course:

Long Course: Start by leaving the starting mark buoy to port, round Blake Island to port or starboard, round a temporary mark approximately 0.3 NM SSE of West Point Lighted Buoy 1 (LL #16805) at approximately 47° 39.3' N, 122° 26.4' W (47.655N 122.440W) to starboard, and finish by leaving the finishing mark buoy to starboard.

Short Course: Same as long course.

Sport Boat Course: Same as long course (scored separately).

Cruiser/Racer Course: Start by leaving the starting mark buoy to port, round Blakely Rock ("K") to port, round the Duwamish Head Light ("D") to port, round a temporary mark approximately 0.3 NM SSE of West Point Lighted Buoy 1 (LL #16805) at approximately 47° 39.3' N, 122° 26.4' W (47.655N 122.440W) to starboard, and finish by leaving the finishing mark buoy to starboard.

Time of First Warning: 0900

Time Limits:

Long Course: Earlier of 8 hours or 1900

Short Course / Sport Boat Course: Earlier of 8 hours or 1900

Cruiser/Racer Class Course: Earlier of 8 hours or 1900

Classes to Race: PHRF-NW. Other classes of at least five boats may apply.

Equipment Requirement Category: PIYASR III or OSR 4

Other Provisions:

- Notice of Race amended by SYC Notice of Race Addendum.
- The short course is available to boats rating 75 PHRF and slower. The sport boat course is open to boats 33 feet and less rating faster than 75.
- A shortened course option will be available for boats that take their time at a designated shortened course option finishing line. Boats using the shortened course option will be considered finishers and will be scored in class and overall based on their time and the distance for the shortened course starting immediately behind boats finishing the full course.
- This race is part of the SYC Tri-Island Series. There will be no scoring exclusions for the series. This changes RRS A2.

Awards: 1st overall on each course. For the Tri-Island Series, 1st overall per course and 1st, 2nd, 3rd in class. Awards will be presented at the awards party.

Social Activities: The series Awards Party will be at the SYC station at Elliott Bay Marina from 5 to 9 PM after the Blake Island race.

Elliott Bay Marina has offered free guest moorage, based on availability, for Friday and Saturday nights. At our request, boats will be assigned to raft on the east side of easternmost pier, dock N. Please contact the marina for availability and assignment at 206-285-4817 or VHF 78A.

Registration Deadline: May 30, 2013 (Thursday)

Registration Fee: \$60 (or \$150 for SYC Tri-Island Series)

Chairpersons: Rhonda Halfman, 425-246-3612, rhondaha@gmail.com

Mike Milburn, 206-780-2525, milburn69802@msn.com



Hanging out at the Elliott Bay Marina clubhouse after Blake Island

Notice of Race SYC Jack & Jill Race

Date: July 27, 2013 (Saturday)

Location: Puget Sound in the vicinity of Elliott Bay and Shilshole Bay. The race committee signal boat will make its first signal in the northern part of Elliott Bay near or between Elliott Bay Marina and West Point.

Course: The courses will be as designated in the Sailing Instructions.

Skipper's Meeting: 1130 at SYC station at Elliott Bay Marina

Time of First Warning: 1300

Time Limit: The time limit will be defined in the Sailing Instructions and will not exceed 5 hours.

Classes to Race: PHRF-NW. Other classes of at least five boats may apply.

Equipment Requirement Category: PIYASR III or OSR 4

Other Provisions:

- Notice of Race amended by SYC Notice of Race Addendum.
- There will be up to three classes: Jack & Jill (crew of one male and one female), Double Handed (two crew total), and Single Handed (one crew)

total). Entrants in the Jack & Jill class will also be entrants in the Double Handed class.

- Children 12 or under and up to two other guests are allowed on board, but may not help sail the boat or hike outside the cockpit.
- Boats may elect to use flying sails or not during the race. Boats will be rated for flying sails by default. Boats will be rated for non-flying sails if they do not use flying sails and immediately after finishing report to the race committee signal boat that they did not use flying sails. This is not a separate class.
- No auto pilots or wind vanes are allowed.
- All crew must wear a USCG certified personal flotation device while racing.

Awards: 1st, 2nd, and 3rd place in class. There will also be a 1st place award for the lowest scoring non-flying sails boat in the Jack & Jill class.

Social Activities: Please join your competitors at the awards party at the Seattle Yacht Club station at Elliott Bay Marina after racing.

Moorage: Elliott Bay Marina has offered free guest moorage, based on availability, for Friday and Saturday nights. At our request, boats will likely be assigned to raft on the east side of easternmost pier, dock N. Please contact the marina for availability and assignment at 206-285-4817 or VHF 78A.

Registration Deadline: July 25, 2013 (Thursday). Note: Register at skipper's meeting if absolutely necessary.

Registration Fee: \$40

Chairperson: Brian Watkins, 206-276-1445, brian.watkins.syc@live.com



Race committee volunteers aboard *Portage Bay* keeping track of the fleet

Notice of Race SYC Star & Bar Regatta

Date: September 14-15, 2013 (Saturday and Sunday)

Location: Puget Sound in the vicinity of Shilshole Bay and the area north of Meadow Point.

Course: The courses will be as designated in the Sailing Instructions.

Time of First Warning: 1030 each day

Time Limit: In the Sailing Instructions and will not exceed 2 hours per race.

Classes to Race: PHRF-NW. Other classes of at least five boats may apply.

Equipment Requirement Category: PIYASR III or OSR 4 (for handicap classes)

Other Provisions: Notice of Race amended by SYC Notice of Race Addendum.

Awards: 1st, 2nd, and 3rd place in class

Social Activities: Parties after each day of racing at CYC Shilshole clubhouse.

Registration Deadline: September 12, 2013 (Thursday)

Registration Fee: \$105

Chairperson: Brian Watkins, 206-276-1445, brian.watkins.syc@live.com



The Star & Bar Regatta stands ready to serve one design fleets

Race Information

SYC Grand Prix Invitational Regatta

Note: This is an informal announcement, not a Notice of Race, and is not part of the rules of the event. For more information, please see the Notice of Race at www.seattleyachtclub.org under Sailing / Regattas.

Dates: October 25-27, 2013 (Friday, Saturday, and Sunday)

Location: The racing area is Puget Sound north of Alki Pt. and south of Pt. Wells. The starting line will be in the vicinity of Shilshole Bay and the area north of Meadow Point.

Course: One or more buoy or mid-distance races may be sailed each day. The courses will be as designated in the Sailing Instructions.

Scheduled Time of First Warning:

Friday: 1330
Saturday and Sunday: 1030

Classes to Race: PHRF-NW and one-design keelboats of at least 24 feet with at least five boats. Other classes may apply at the discretion of the organizing authority. Monohull, multihull, and cruiser/racer boats will race in separate classes.

Other Provisions:

- Qualifying Events – Only boats that qualify based on their performance in selected races in the prior year and are invited, at the discretion of the organizing authority, will be eligible to register. Boats may also qualify at the discretion of the organizing authority. For more information, see the Qualifying Events section, below.
- One Design Fleets – A whole one-design class may qualify if several boats of the class have qualified and can register a number of boats suitable for a one design class start. For more information, please contact the regatta organizers listed below.
- A cruiser/racer class will be open to boats that competed in the cruiser/racer class of any Seattle Yacht Club race.
- Permanent trophy recognition will be awarded for each class.
- The race committee will have on-the-water discretion to run one or more races each day with an emphasis on buoy courses.

Awards: 1st, 2nd, and 3rd place in class

Social Activities: There will be parties after racing each day. The awards dinner will be after racing on Sunday at Seattle Yacht Club.

Registration Deadline: October 23, 2013 (Wednesday)

Registration Fee (based on boat length):

Under 30': \$135
30' to under 40': \$170
40' and over: \$205

Chairpersons: Paul Walchenbach, 206-948-7095, paul@walchenbachlaw.com

Qualifying Events:

The following events are qualifiers in racing classes with at least four boats registered:

Seattle Yacht Club Events (1st, 2nd or 3rd in class)

SYC Tri-Island Series and races:	SYC Mark Mayer Regatta
SYC Smith / Protection Island Race	SYC Jack & Jill Regatta
SYC Vashon Island Race	SYC Star & Bar Regatta
SYC Blake Island Race	SYC Grand Prix Regatta (prior year)
SYC/CYC NOOD Regatta	

Other Events (1st, 2nd, or 3rd in class)

SSSS South Sound Series and races:	WVYC Southern Straits
TYC Vashon Island	CYC PSSR
TTPYC Duwamish Head	RVicYC Swiftsure (S,CF,UCF,JF,UJF)
OYC Toliva Shoal	Whidbey Island Race Week
GHYC Islands	CBSA Cowichan Bay Regatta
CYC Center Sound Series and races	Van Isle 360
CYC Blakely Rock	RVanYC/LYC Vic-Maui
CYC Scatchet Head	CYC PSSC
CYC Three Tree Point	OIYC Round the County

Other Events (1st in class)

STYC Iceberg	RVanYC Easter Seals Regatta
RVanYC VARC Opener	NYC SIN
STYC Blakely Rock Benefit	RIPS Canadian Race Week
RVicYC THRASH	AYC Northern Century
FCYC VARC Spring	BYC PITCH
SBYC/STYC Ballard Cup Series (I-III)	MBYC Maple Bay Regatta
STYC Race to the Straits	SBYC Trans-Puget
SISC Round Saltspring	CYCE Foulweather Bluff
AYC Windermere Cup	STYC Fall
Sail Northwest J-Fest	RVanYC VARC Closer
RVanYC WAVES	

Prior Award Winners

2012	
FreeByrd	Neil Fiske
Sachem	William Buchan
Absolutely	Charlie Macaulay
Delirium	Jerry Diercks
Slick	Bob Mayfield / Pat Nelson
2011	
Flash	Steve Travis
Voodoo Child	Brian Duchin
Tantivy	Stuart Burnell
Shoot the Moon	Don Wills II
Here & Now	Pat Denney
Arturo	Dan Westra
2010	
Flash	Steve Travis
Tachyon	Shaun Breese
Absolutely	Charlie Macaulay
Dos	Paul Faget
Trophy Wife	Glenn Klute
More Uff Da	Ben Braden

2009	
Banshee	Derek Campbell
Dos	Brad Butler
Declaration of Independence	Brian Watkins
Karma	Peter Shorett
Money Shot	Mike Schiltz
Here & Now	Pat Denney
Ladybug	Mark Brink
2008	
Braveheart	Charles Burnett III
Banshee	Derek Campbell
Declaration of Independence	Brian Watkins
Money Shot	Mike Schiltz
Gauche	John Cahill
Three Ring Circus	Nate Creitz
Jude Stoller	Makika
Tikanga	Dalton Bergan

2007	
Makika	Jude Stoller
Braveheart	Charles Burnett
Ballistic	Gordy Cole
Declaration of Independence	Brian Watkins
Astral Plane	Adam Korbin
Grafix	Dave Martin
Money Shot	Mike Schiltz
Time Warp	Peter Nelson
Three Ring Circus	Nate Creitz
2006	
Makika	Jude Stoller
Coruba	Rob Fleming
Ballistic	Gordy Cole
Finale	Roger Hills
Sunday Ticket	Lance McDonough
Trophy Wife	Glenn Klute
Time Warp	Peter Nelson
Here & Now	Pat Denney
Three Ring Circus	Nate Creitz
2005	
Makika	Jude Stoller
Braveheart	Colin Booth
Storyville	Darrin Towe / John Hoag
Declaration of Independence	Brian Watkins
Corvo	Tom Kerr
Judo Chop	Herb Cole
Gaucho	John Cahill
Percussive Maintenance	Hans Spiller
2004	
Coruba	Rob Fleming
Midsummer	Stig Osterberg
Gaia	Bob Riggle
Break'n Wind	Matt MacGregor
Ginny	Charles Mottl
Eclipse	Brad Butler
Dragonfly	Pat McGarry
2003	
Coruba	Rob Fleming
Midsummer	Stig Osterberg
Declaration of Independence	Brian Watkins
Elixir	Mike Milburn
Isabeau	Carl Freund
Morphine	Brad Butler
Scooter	Mike Wright
2002	
Go Dog Go	Herb Cole
Elixir	Mike Milburn
Dangerous When Wet	Chris Winnard
Sibling Rivalry	Will Marken
2001	
Go Dog Go	Herb Cole
X-S	Colin Nichols
Morphine	Brad Butler
2000	
Elixir	Mike Milburn
Eclipse	Brad Butler
Coral Reefer	Dave Dupree
1999	
Paddywagon	Brian Huse
Ginny	Charles Mottel
Dragonfly	Patrick McGarry
1998	
China Cloud	Bill Buchan
Jubilee	Bill Burnett
Splash Tango 2	Stacey Wilson
Capella	Sherwood/Powley/Kubas

1998	
China Cloud	Bill Buchan
Jubilee	Bill Burnett
Splash Tango 2	Stacey Wilson
Capella	Sherwood/Powley/Kubas
1997	
China Cloud	Bill Buchan
Jubilee	Bill Burnett
Roxanne	Gordon Stoll
Kurrewa	Bob Henderson
Hail Merry	Trevor Hayward
Hanoman	Thomas Reese
1996	
Cassiopeia	Charles Burnett
Charisma	Roser/Robins
Showtime	Bob Mayfield
Fairwind	Putman/Joblonski
Francesca	James Miller
Alderbaran	Sherwood/Kubas
Bedford Lass	John Sterry
Hanoman	Thomas Reese
1995	
Cassiopeia	Charles Burnett
War Pig	Jeff Good
Aldebaran	Steve Kubas
Magic	Dave Schutte
1994	
Oaxaca	Gene Twiner
Aldebaran	Steve Kubas
Choices II	Dave Champion
Mustang Sally	Pryde/Schiltz
1993	
Oaxaca	Gene Twiner
White Lies	James Marta
Elixir	Mike Milburn
Twinkle	Alex Kimball
White Squall	Roger Deitz
1992	
Oaxaca	Gene Twiner
Mustard Seed	Stacey Wilson
Sirius	Ken & Joanna Hays
Another Child	Lloyd Mathison
Rascal	Bill Watkins
1991	
Oaxaca	Gene Twiner
Schuss	Ed Webb
Wild Turkey	David Lynch
The Morgan	Ken & Sandy Robbins
Tiger Rag	Bill Headden
1990	
Jack Rabbit	Don Hebard
Starfire	Nelson/Benjamin
Impulse	Ken & Sandy Robbins
Mo Beta Two	Chuck Pepka
1989	
Snook	Erik Bentzen
Teddy Bear	Grey Hawken
Keladi	Ray Fiedler
Lady Bug	Alan Holt
1988	
Sachem	Bill Buchan
Gadzooks	Willis/Willhite
Rev	John Thompson
1987	
Bonnie	Badgley/Callaghan
Lucille	Stamper/ Stamper
Flamenco	Rocky Goodhope

SYC Deception Class Mini-12 Fleet

With twenty active boats and over 175 races every year, the Seattle Yacht Club Deception Class Mini-12 Fleet is the most active One Design fleet in the Pacific Northwest!

The Deception, built in Victoria B.C., is a 13' sloop designed by two Royal Victoria Yacht Club members to about one-fifth the scale of the 1980's America's Cup yachts. We have forty members as individual boat owners or in boat partnerships, which is a practical way to keep the costs down and get all the boats out for the regattas.

Every year we have seven series consisting of five regattas each. And with our friends at Royal Victoria Yacht Club and their ten boats, our two clubs alternate as host for an annual Inter-Club Team Race Regatta..



Mini-12's racing on Portage Bay

No regattas are held in July and August, when some members go on vacation or cruising. To accommodate our members who leave town for skiing or golfing, we score our Fleet Championship using their best five series. Each of our ownerships teams will organize about two regattas per year.

The Mini-12's rest upon yard trailers aboard two barges at the inshore end of Dock 3 at SYC. These barges are equipped with an electric hoist to make launch and recovery easy. Take a close look at the boats and picture getting out racing on Portage Bay as captain and crew! The Mini-12 fleet is a great place to get started in your sailing career and learn from many of the regions finest and most experienced sailors.

Contact Fleet Captain Bill Boyeson to come out for a sail.

Date	Day	Time	Event	Committee
OCTOBER 2012				
14	Sunday	2:00	Late Fall Series, Regatta 1 (NFS)	USA 9
21	Sunday	2:00	Late Fall Series, Regatta 2 (NFS)	USA 10
28	Sunday	2:00	Late Fall Series, Regatta 3 (NFS)	USA 11
NOVEMBER				
4	Sunday	2:00	Late Fall Series, Regatta 4 (NFS)	USA 13
11	Sunday	2:00	Late Fall Series, Regatta 5 (NFS)	USA 14
16	Friday	5:30	Annual SYC Sailboat Awards	
18	Sunday	2:00	Winter Series, Regatta 1	USA 15
25	Sunday	2:00	Winter Series, Regatta 2	USA 16
DECEMBER				
9	Sunday	2:00	Winter Series, Regatta 3	USA 17
16	Sunday	2:00	Winter Series, Regatta 4	USA 18
JANUARY 2013				
6	Sunday	2:00	Winter Series, Regatta 5	USA 19
13	Sunday	2:00	Late Winter Series, Regatta 1 (NFS)	USA 20
28	Sunday	2:00	Late Winter Series, Regatta 2 (NFS)	USA 21
FEBRUARY				
3	Sunday	2:00	Late Winter Series, Regatta 3 (NFS)	USA 1
10	Sunday	2:00	Late Winter Series, Regatta 4 (NFS)	USA 2
24	Sunday	2:00	Late Winter Series, Regatta 5 (NFS)	USA 3
MARCH				
3	Sunday	2:00	Spring Series, Regatta 1	USA4
10	Sunday	2:00	Spring Series, Regatta 2	USA 5
17	Sunday	2:00	Spring Series, Regatta 3	USA 6
24	Sunday	2:00	Spring Series, Regatta 4	USA 7
26	Tuesday	3:00	Team Racing, Practice 1	USA 8
APRIL				
2	Tuesday	6:00	Team Racing, Practice 2	USA 9
7	Sunday	1:00	Spring Series, Regatta 5	USA 10
7	Sunday	3:00	Team Racing, Practice 3	USA 10
9	Tuesday	6:00	Team Racing, Practice 4	USA 11
13-14	Sat & Sun	All Day	Team Racing Regatta @ RVicYC	Host YC
16	Tuesday	6:00	Late Spring Series, Regatta 1	USA 13
23	Tuesday	6:00	Late Spring Series, Regatta 2	USA 14
30	Tuesday	6:00	Late Spring Series, Regatta 3	USA 15
MAY				
2	Thursday	2:00	Canadian Exchange Regatta	TBA
4	Saturday	Noon	Opening Day	
7	Tuesday	6:00	Late Spring Series, Regatta 4	USA 16
14	Tuesday	6:00	Late Spring Series, Regatta 5	USA 17
18-19	Sat & Sun	All Day	NOOD Regatta, Lake Union	TBA
21	Tuesday	6:00	Summer Series, Regatta 1	USA18
JUNE (no racing July or August)				
4	Tuesday	6:00	Summer Series, Regatta 2	USA 19
11	Tuesday	6:00	Summer Series, Regatta 3	USA 20
18	Tuesday	6:00	Summer Series, Regatta 4	USA 21
25	Tuesday	6:00	Summer Series, Regatta 5	USA 1
SEPTEMBER				
8	Sunday	3:00	Fall Series, Regatta 1	USA 2
15	Sunday	3:00	Fall Series, Regatta 2	USA 3
22	Sunday	3:00	Fall Series, Regatta 3	USA 4
29	Sunday	3:00	Fall Series, Regatta 4	USA 5
OCTOBER				
6	Sunday	3:00	Fall Series, Regatta 5	USA 6
6	Sunday	5:00	Annual Fleet Owners Meeting	

SYC Sailboat Cruising Program

Cruising events are for members of Seattle Yacht Club, except as noted.

- Overview of Sailboat Cruising Events
- Winter and Spring Power/Sail Mini Cruises
- Leukemia Cup
- Cruise & Snooze
- Commodore's Cruise and Sunshine Coast Cruise

Overview of Sailboat Cruising Events

Winter and Spring Power/Sail Mini Cruises

These early-season cruises are open to all SYC boaters, power and sail. Each cruise starts off Shilshole on a Saturday and goes to a nearby destination. They're a terrific way to get a jump on the season and enjoy time on the water with your friends.

Leukemia Cup

Seattle Yacht Club is a proud participant in the annual Leukemia Cup Regatta to benefit the Leukemia and Lymphoma Society with a casual race in Elliott Bay and tropical themed auction party. This event is open to everyone. We typically raise \$125,000 to \$150,000 in the name of the Seattle area boating and sailing community. Come take part in doing something fun and good with our sport and join the 80 or so boats and 300 people at the party at Elliott Bay Marina to enjoy the food and drink, the band, the games, and the good company!

Cruise & Snoozes

This time-honored cruising event is ideal for families. With a reverse start and non-flying sails, everyone is guaranteed to have a great time and the racing is optional. Come and enjoy the company of your SYC sailing friends at a casual event.

Commodore's Cruise and Sunshine Coast Cruise

Join friends, and make some new ones, on the week-long Commodore's Cruise from Henry Island to Ovens Island, with casual races most days and overnight stops along the way. Follow it up the week after with the Sunshine Coast Cruise from Ovens to the doorstep of Desolation Sound, with interesting anchorages along the way.

Winter and Spring Power/Sail Mini Cruises

OK boaters here is the POWER/SAIL Mini Cruise schedule. AI's are encouraged to attend; kids welcome. If there are small craft warnings, the event is cancelled. This is classified semi-official non-event event which means there is no charge for TONS of fun and adventure.

Always bring a Greenbox; usually starts around 1730. Dinner is potluck or at a local restaurant as below.

Registration Deadline: For information or to sign up, e-mail or phone the chairperson by 1600 on the Friday before each cruise.

Chairpersons: Fred Pot, 206-850-7664, fpot@comast.net

<u>Date</u>	<u>Destination</u>	<u>Dinner</u>
January 5-6	Port Madison	Potluck dinner
January 26-27	Eagle Harbor	Dinner at the pub
March 2-3	Gig Harbor	Potluck dinner
April 20-21	Port Orchard	Potluck or pub
May 25-26	Poulsbo	Dinner at Italian restaurant
July 3	Liberty Bay	Anchor raft-up w/potluck dinner



Sharing race committee know-how at the Star & Bar Regatta

Leukemia Cup Regatta

Let's do something good with our great sport!

Seattle Yacht Club is a proud participant of the annual Leukemia Cup Regatta. There are plenty of worthy causes and top charities. Whether or not it's our particular personal cause, the point is to pick one for our community that fits with our style and is big enough to be noticeable and widely appreciated, and focus what we can do together.

The party at Elliott Bay Marina had over 300 people who enjoyed the food, the rum, the band, and the games. Our efforts over the last nineteen years, here and across the country, have raised over thirty-eight million dollars!

Boat owners and crew can participate just by registering and showing up for the casual format sailboat regatta and/or the party that evening. If interested, we'll attempt to match you with patients and their families to be your guests on the water for a much appreciated getaway. You will feel like you did something just by sharing what you're already doing.



Date: June 8, 2013 (Saturday)

Location and Schedule (all at Elliott Bay Marina):

Registration	1000 – 1300 (SYC station at Elliott Bay Marina)
Skipper's Meeting	1245 (SYC station at Elliott Bay Marina)
Regatta	1400 - 1700
Party	1700 - 2130

Elliott Bay Marina has offered free guest moorage for Friday and Saturday nights. Boats will likely be assigned to raft on the east side of dock N. Please contact the marina for availability and assignment at 206-285-4817 or VHF 78A.

Course: Two laps in Elliott Bay. Everyone is welcome to race or cruise.

Registration Donation: \$150 to the Leukemia and Lymphoma Society (includes two party tickets). Additional party tickets \$25.

Registration: Please register online at www.leukemicup.org/wa.

SYC Contact: Brian Watkins, 206-276-1445, brian.watkins.sail@live.com

Notice of Race

SYC Cruise & Snooze

Power boaters encouraged to attend

This is a great event. Sail over to Port Madison, spend the night, and sail back the next day. No flying sails. Pursuit format starts so fewer boats start together. Super green box. Potluck dinner with more than enough to eat. Kids welcome.

Date:

Races A/B (Saturday/Sunday): June 22-23, 2013
Races C/D (Saturday/Sunday): September 7-8, 2013

Location: Puget Sound in the vicinity of Shilshole Bay. The start will be off Shilshole on Saturday and off Point Monroe on Sunday.

Course: The courses will be cruiser/racer and announced prior to racing.

Time of First Warning:

Races A and C (Saturdays): 1100
Races B and D (Sundays): 1200

Time Limit: 1700 each day

Classes to Race: Sailboats! Though helpful, you do not need a PHRF-NW rating to race. Performance handicaps will be assigned for this event as necessary.

Other Provisions:

- Notice of Race amended by SYC Notice of Race Addendum.
- No spinnakers or other flying sails may be used. Only one working sail may be flown on its stay at any time, except during sail changes.
- All races will be pursuit format with handicaps applied at the start.
- SYC members only event.

Awards: Special awards will be made at the conclusion of each Saturday race. Recipients will be selected by the chairpersons. The Cruise & Snooze Cannon Trophy will be awarded to the series overall winner.

Social Activities: Greenbox at 1700 on Saturday after racing. Dinner will follow at 1830. Main course is provided. When you sign up to attend, please let the front desk know whether you will bring a main dish, salad, or dessert for twelve people. A logger's breakfast will be served at 0800 on Sunday morning.

Registration Deadline:

Races A/B (Saturday/Sunday): June 20, 2013 (Thursday)
Races C/D (Saturday/Sunday): September 5, 2013 (Thursday)

Registration Fee: \$50 for A/B, \$50 for C/D. The fee provides for two adults per boat and \$15 extra for each additional adult on board to help pay for food. No charge for kids.

Chairpersons: Phil Calvert, 206-910-7977, phil.calvert@comcast.net
Darrin Towe, 425-891-2535, darrin.towe@gmail.com

Commodore's Cruise (San Juan and Gulf Islands)

The Commodore's Cruise is a power and sail event! Tons of fun! Starts at Henry Island and ends at Oven's Island.

Dates: July 21 to July 26, 2013 (Sunday to Friday)

Sunday	Greenbox at Henry Island 1730 w/event schedule and info
Monday	Race #1 to Sydney, huge greenbox at Sydney Marina
Tuesday	Race #2 to Ganges, greenbox at outstation
Wednesday	Lay day, star raft in Montague Harbor
Thursday	Race #3 to Oven's Island, awards, barbeque, prizes
Friday	Lead sinker pancake breakfast

Registration: Please register by June 15 at the front desk at SYC.

Chairpersons: Roger and Lyn Pawley, 425-890-2751, sailrap@msn.com

Sunshine Coast Cruise (British Columbia)

This is a power and sail event. Destinations and anchorages selected will be weather dependent and large enough to accommodate all boats safely. Be prepared to anchor in 10 fathoms of water. We will raft as much as we can. This is an EXTREMELY COOL semi-official non-event event, meaning there is no charge.

This cruise starts after the Commodore's Cruise at Ovens Island and ends on the doorstep to Desolation Sound at the Cortes Island outstation. We will visit places around the Straits of Georgia rarely seen by SYCers like Lasqueti Island, Hornby Island, Comox, and Savary Island. Guests may arrive or depart by scheduled air service at Nanaimo and Comox. You can join or leave the cruise at any point.

Dates: July 27 to August 2, 2013 (Saturday to Friday, be prepared to be flexible)

Saturday	From Ovens Island to Nanaimo. Greenbox on <i>Panther</i> .
Sunday	Depart Nanaimo for Lasqueti. Greenbox.
Monday	Depart Lasqueti for Tribune Bay. Greenbox.
Tuesday	Lay day.
Wednesday	Depart Hornby for Comox Marina via Baynes Sound.
Thursday	Depart Comox for Savary Island or Gorge Harbor.
Friday	Depart Savary Island or Gorge Harbor for Cortez Island.

Chairpersons: Chris Warner and Pam Murray, 206-782-1277, panther@seanet.com

SYC Sailing School and Junior Race Team

The Sailing School and Junior Race Team offer small boat sailing for members and guests of all ages with an emphasis on junior sailing development.

Summer Sailing School

The Seattle Yacht Club has a long-standing tradition of providing an outstanding Junior Sailing School program for children in the Seattle area. We offer classes for children from 7-17 years of age with a wide variety of class options. Over 500 young sailors participate in a total of 39 classes over a ten week period each summer. The instructional staff is trained through US SAILING, and CPR and First Aid certified.

This year's program will run from June 17 through August 30, 2013. Classes run from 9:00 AM - 4:00 PM Monday through Friday. Students can sign up for a week at a time.



Opti sailing in Portage Bay

Member Registration. Members will be able to register from March 25-27 online, via fax, mail, or in person. After this period, the policy will be first-come, first-served whether member or non-member. We ask that you use your SYC membership number for billing purposes. Member prices include members' children, grandchildren, and junior members.

Non-member Registration. Guest registration will begin on Thursday, March 28 from 8:30 AM - 6:00 PM in the Sailing Office, located near the south entrance to the Seattle Yacht Club Portage Bay clubhouse. Class availability will be on a first come, first-served basis. After this period, registrations will be accepted online, via mail, or fax.

Junior Race Team

The SYC Race Team invites aspiring young sailors to join in the fun, support, friendships, and camaraderie that develop from being a part of a nationally competitive sailing team. SYC Race Team sailors can take part in 75 scheduled practices and enjoy support from our coaching crew at seven regional regattas. Advanced sailors compete in both national and international events, and over the years, the SYC program has helped in the development of many Olympic class sailors as well.

Northwest Youth Race Circuit Schedule

Fleet Racing

- April 20-21 RVYC Kitten Cup Regatta, Vancouver, BC
Contact: James McDonald (sail_dir@royalvan.com)
- June 29-30 VLSC Vancouver Lake Regatta, Vancouver, Washington
Contact: Dave Cannard (dave@netequality.org)
- July 20-21 CGRA WIND Youth Regatta, Cascade Locks, Oregon
Contact: Jarvis Brecker (jarvis@cgra.org)
- July 26-28 CGRA Opti Gorge Regatta, Cascade Locks, Oregon
Contact: Jarvis Brecker (jarvis@cgra.org)
- Aug 10-11 Bellingham YC Ski to Sea Youth Regatta
Contact: Scott Wilson (scotjwilson@gmail.com)
- Aug 24-25 SYC Northwest Junior Olympics
Shilshole Bay Marina, Seattle, Washington
Contact: Brian Ledbetter (brianl@seattleyachtclub.org)
- Sept 7-8 Jonny Adams Memorial Regatta, Port Madison, Washington
Contact: Stephanie Ahlquist (stephofcourse@aol.com)
- Sept 28-29 CYC/SSP Octoberfest, Seattle, Washington (Sand Point)
Contact: Morgan Collins (morgan@sailsandpoint.org)

Team Racing

- Aug 17-18 McCurdy Cup Jr Team Race Championship
Hosted by Seattle Yacht Club at Sail Sand Point
Contact: Cameron Hoard(choard@gmail.com)

Tuesday Night Sailing

Come to the clubhouse on Tuesday Nights in the summer for sailing, casual races, dinner and games on the lawn! All of the small sailboats are available for members and their guests, as well as members of the Race Team. Sailing Instructors will be on hand to assist participants on and off the water. Dinner is served on the lawn afterwards. Fun for all ages. Younger sailors are encouraged to pair up with parents or older Race Team members!! Sailing runs Tuesdays, June 18 to August 27, 5:00 PM to 7:00 PM.

High School Sailing at SYC

To help promote High School Sailing in Seattle and create a place for graduates of our sailing school to begin participating in the sport, we are now offering a membership to the SYC Race Team for the High School season.



Vanguard 15: multi-purpose, double-handed one design (fun too)

This program is open to all kids from 7th- 12th grade and does not require your school to form a team. We will mix and match sailors from all schools. Opti sailors are welcome to practice, but might not meet the grade requirement to race. This year we are providing practices at SYC twice a week during the spring season from March till late May. This will also include coaching at many local events (check www.nwisa.org for the most up-to-date schedule).

Opti Green Fleet Program

Interested in taking the first step to becoming a racer? The Opti Green Fleet is the best place to start for kids ages 8-13. The group meets each summer on Wednesday evenings from 5:00 to 7:30 at SYC on Portage Bay. Using our club boats, you will learn the basics of racing, advanced rigging, and boat handling. A coach will also be on hand at three local regattas. Once you feel ready to head out to Shilshole and sail with the regular Opti Team, your fee can be forwarded toward the regular Race Team annual fee.

Adult Sailing Courses

Seattle Yacht Club's adult sailing sessions offer an excellent way to get out on the water and learn the basics of small boat sailing. Using the club's Vanguard-15's, 420's, and Lasers, the classes start with the basics including rigging, points of sail, sail trim, boat-handling, and boating safety. Students develop their skills through on-the-water sessions, "chalk talk" discussions, and work in textbooks. Classes are open to all levels, and advanced sessions are offered for more experienced sailors ready to learn racing tactics.

Private Sailing Lessons

Enjoy the individual attention and customized instruction of private lessons at Seattle Yacht Club. Whether you're looking to learn from scratch, refresh your basic sailing skills, or learn more advanced techniques, private lessons provide the opportunity to learn what you want when you want.



Double-handed 420 in Shilshole Bay

The Small Boat Fleet at SYC

SYC is committed to our program to grow boating with the acquisition and maintenance of our small boat fleet and support boats, including twenty Lasers, twenty-nine Optimists, one 29er, twelve Vanguard 15's, eight 420's, five Avon inflatables, six Boston Whalers, one Grady White, and the 40' m/v *Portage Bay* trawler.

The **Optimist** is an eight foot, kid-sized single-handed dinghy that is easy to manage and fun to sail. The "Opti" is a great boat for juniors to begin sailing, and advance to racing easily.

The **Vanguard-15** is the primary training boat at SYC. This stable, double-handed boat with a main and jib is the national standard for novice and advanced sailors to master the basics and to develop teamwork.

The Olympic-Class **Laser** is a high performance single-handed dinghy for intermediate and advanced sailors. It is a great platform to build boat-handling and racing skills. This boat has two different size sails, allowing us to tailor the boat to the weight of the sailor.

The **420** is an ideal entry-level training boat for all ages. This is a double-handed boat with main and jib. Advanced sailors can rig the spinnaker and trapeze for an exhilarating thrill.

Sailing Office Contact Information

The Sailing Office is located at the SYC Portage Bay clubhouse on the bottom floor near the south entrance. Please contact the Sailing Office personnel for any questions or information.

Brian Ledbetter, Sailing Director

brianl@seattleyachtclub.org

Angela Frost, Sailing Programs Coordinator

angela@seattleyachtclub.org

Cameron Hoard, Race Team Coach

choard@gmail.com

Sydney DelaCruz, Race Team Assistant Coach

palma6@hotmail.com

Phone: 206-926-1011

Fax: 206-324-8784



The Olympic class Laser, Laser Radial, and Laser 4.7

Awards and Recognition

Thank you and congratulations to everyone who volunteered and competed.

Junior Sailing Awards

<u>Trophy</u>	<u>Event</u>	<u>Recipient</u>
Bill Burdick Trophy	Junior Sailor of the Year	Hanne Weaver
Ernest Gann Award	Outstanding Jr. Instructor	Helen Chyz
Captain Lovejoy Trophy	Most Improved Sailor	Justin Skene
Joe Duthie Trophy	Top Girl- Club Championship Regatta	AnaLucia Clarkson
Stimson Trophy	Top Boy – Club Championship Regatta	David Brink
Brent Nichols Trophy	Outstanding Sportsmanship / Inspirational Sailor	Alex Tong

Outstanding Achievement in Sailing

<u>Trophy</u>	<u>Event</u>	<u>Recipient</u>
Outstanding Cruising Family Trophy	Cruising Sailboat of the Year	<i>Gratitude</i> , Susan & Charlie Stillman
Ruptured Eardrum Trophy	Outstanding Race Committee Member	Paul Thorlakson
Bob Gibbons Trophy	One-Design Sailor of the Year	Hanne Weaver
Lake Union Sailing Trophy	Outstanding Crew Member	Brad Baker
Golden Potlatch Trophy	Outstanding Cruiser/Racer	<i>Sunshine</i> , Mike Milburn
Kelly O'Neil Henson Trophy	Best SYC Swiftsure	<i>Lunch Box</i> , Josh Larsen
Bates McKee Memorial Trophy	Sailboat of the Year	<i>Sachem</i> , William Buchan
Marymont Trophy	Sailor of the Year	Tom Huseby
Perpetual Sailboat Trophy	William W. Heylman Memorial Award	Chris Otorowski

Sailing Performance Awards

Tri-Island Series

Protection Island Race

Jerry Bryant Trophy (Long)	William Weinstein	<i>Terremoto</i>
Old Salt Trophy (Short)	Tom Kerr	<i>Corvo</i>
Lady Medina (C/R)	Mike Milburn	<i>Sunshine</i>

Vashon Island Race

Salt Chuck Trophy (L)	Greg Slyngstad	<i>Wasabi</i>
Rawson Trophy (S)	Paul Walchenbach	<i>Mata Hari</i>
Cruiser/Racer (C/R)	Mike Milburn	<i>Sunshine</i>

Blake Island Race

Blake Island Trophy (L)	Stuart Burnell	<i>Tantivy</i>
Blake Island-Short (S)	Jerry Diercks	<i>Delirium</i>
Gamwell Trophy (C/R)	Jim Medley	<i>Puffin</i>

Tri Island Series Overall

Walt Little Trophy (L)	Stuart Burnell	<i>Tantivy</i>
First President's Trophy (S)	Tom Kerr	<i>Corvo</i>
Tri-Island Cannon (C/R)	Mike Milburn	<i>Sunshine</i>

Mark Mayer

Mark Mayer Bowl	Tom Huseby	<i>Double Take</i>
Mark Mayer Trophy	Dan Krier	<i>Bullet</i>
Cruiser/Racer	Jim Medley	<i>Puffin</i>

NOOD Regatta

J/105	Jerry Diercks	<i>Delirium</i>
J/80	William McKinnon	<i>Skye Rocket</i>
Performance 30	Laney Gale	<i>Blue Martini</i>
International 6 Meter	Andy Parker	<i>Finnegan</i>
Viper 640	Chris Winnard	<i>Disaster Area</i>
J/24	Mark Laura	<i>Tundra Rose</i>
Thunderbird	Ken Lane	<i>Raptor</i>
Melges 24	Dan Kaseler	<i>pTeron</i>
San Juan 21 (NFS)	Sean Randle	<i>Osprey</i>
San Juan 21	Marc VanderSchalie	<i>Kermit</i>
San Juan 24	Kenneth Johnson	<i>Grauer Geist</i>
Formula 18	Ben Colwell	<i>Rum Line</i>
29er / Open Skiff	Carl Schulmiester	<i>433</i>
Laser	David Brink	<i>175942</i>

Mini-12	Stacey Wilson	<i>Three Stooges</i>
CSR Marine Melges 24 National Championship		
1st Place	Harry Melges	<i>Zenda Express,</i> Lake Geneva YC
2nd Place	Alan Field	<i>WTF,</i> California YC
3rd Place	Warwick Rooklyn	<i>Bandit,</i> Cruising YC of AUS
1st Place Corinthian (11th)	Stig Osterberg	<i>Midsummer,</i> Port Townsend YC
2nd Place Corinthian (12th)	Derek Campbell	<i>Banshee,</i> Seattle YC
3rd Place Corinthian (13th)	Keith Hammer / Matt MacGregor	<i>Meat Head,</i> Seattle YC

Whidbey Island Race Week

Xzora Trophy	John Hoag	<i>Shrek</i> (1 st Place)
--------------	-----------	--------------------------------------

SYC Jack & Jill

No wind

McCurdy Trophy Regatta

1st Place	Bainbridge Island HS
2nd Place	North Kitsap HS
3rd Place	Sehome Varsity HS

Northwest Jr. Olympics

29er	A. Demmler / A. Tong	SYC
Laser	Adam DiDomizio	SSP
Laser Radial	David Brink	SYC
Optimist	Nicolas Martin	CYC
Bic	Kara Ashpole	GHYC
FJ	Shaan /Yumi Shridhar	SSP

New York Yacht Club Invitational Cup US Qualifying Series

1st Place (Qualifying)		Larchmont YC
2nd Place (Qualifying)	W. Andrew Loe III Lindsay Bergan Anthony Boscolo Michael Karas	Seattle YC
3rd Place (Qualifying)		San Francisco YC

Cruise & Snooze

Cruising	Jenna Miller	<i>Sophie</i>
Racing	William Elmer	<i>Anomaly</i>
Overall (Cannon Award)	Jenna Miller	<i>Sophie</i>

Star & Bar

PHRF 1	Greg Slyngstad	<i>Wasabi</i>
PHRF 2	William Buchan	<i>Sachem</i>
J/105	Jerry Diercks	<i>Delirium</i>
PHRF 4	John Cahill	<i>Gacho</i>
PHRF 5	Bob Mayfield Pat Nelson	<i>Slick</i>
6 Meter	Trevor DiMarco	<i>St. Francis V</i>

Grand Prix

Cadranell Trophy	Neil Fiske	<i>FreeByrd</i>
Robert H. Perry Trophy	William Buchan	<i>Sachem</i>
Charles Ross Trophy	Charlie Macaulay	<i>Absolutely</i>
Griffiths Trophy	Jerry Diercks	<i>Delirium</i>
Kennel Windpennant	Bob Mayfield, Pat Nelson	<i>Slick</i>

T-37 National Championship Regatta

Team Racing Championship	Buchan, McKee, Footh	Seattle Yacht Club
--------------------------	----------------------	--------------------

Mini-12 Awards

Fleet Championship	Wilson, Brain, Stoll	<i>Three Stooges</i>
--------------------	----------------------	----------------------



A fine day at the 2012 CSR Marine Melges 24 US Nationals

Appendix

In this section:

- Sailing Program Leadership Team
- Sailing Program Contacts
- Puget Sound Sailboat Safety Regulations
- Mark Descriptions
- Buoy Course Marks Diagram
- Puget Sound Marks Diagram

Sailing Program Leadership Team

Commodore	Rob Rothe
Vice Commodore	Chris Warner
Rear Commodore	Roger Anderson
Fleet Captain Sail	Brian Watkins
Cruising Activities Chairman	Fred Pot
Junior Commodore	Danielle Erjavec
Junior Vice Commodore	Sheridan Ferguson
Junior Rear Commodore	Biko Kavalam
Junior Secretary	Bryce Baker
Junior Advisor	Suzanne Lusnia, PJ Baker
Race Committee (as of prior year)	Roman Budzianowski, Phil Calvert, Iain Christenson, Pat Crockett, Bill Elmer, Dave Ferguson, Brian Ferris, Don Glockner, Rhonda Halfman, Denny Johnson, Keith Johnson, Dan Krier, Brian Ledbetter, Angela Leffingwell, Sarah Mars, Jim Medley, Mike Milburn, Chris Otorowski, Roger Pawley, Lyn Pawley, Warren Pawley, Charlie Pelly, Marda Phelps, Brian Pistay, Fred Pot, Barbara Reid, Karole Sherlock, Mike Sherlock, Seth Siegal, Gordon Stoll, Paul Thorlakson, Paul Walchenbach, Chris Warner, Curt Warner, Brian Watkins, Tom Weingarten, Carin Weinrich, Stacey Wilson
Sailing Director	Brian Ledbetter

Sailing Program Contacts

Fleet Captain Sail	Brian Watkins	brian.watkins.syc@live.com 206-276-1445
Cruising Activities Chair	Fred Pot	fpot@comcast.net 206-850-7664
Director Racing Operations	Karole Sherlock	karolesherlock@gmail.com 425-941-4617
Protest Committee Chair	Jim Medley	jim.medley@comcast.net 206-605-9255
PHRF-NW Handicapper	Mike Milburn	milburn69802@msn.com 206-780-2525
Mini 12 Fleet Chair	Bill Boyeson	j.boyeson@frontier.com 206-922-9933
T-37 Fleet Chair	Allan Van Ness	van.ness444@gmail.com 206-920-2854
Sailboat Dinner Programs	Fred Pot	fpot@comcast.net 206-850-7664
SYC Sailing Director	Brian Ledbetter	brianl@seattleyachtclub.org 206-325-1000

See Notices of Race for individual event chairpersons.



Madrona approaching West Point in the Vashon Island Race

Puget Sound Sailboat Safety Regulations

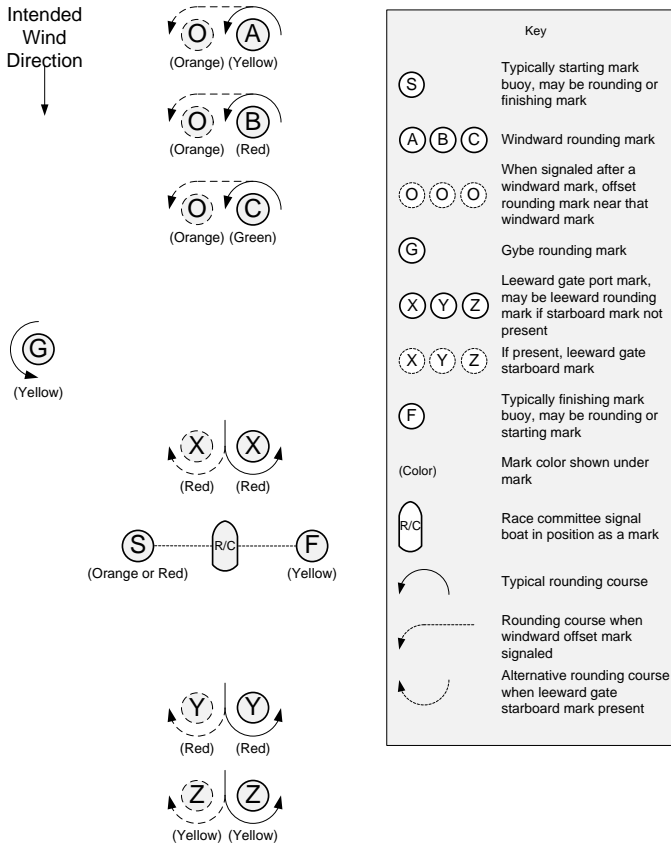
2002 Revision as adopted by the Shilshole Bay, Sloop Tavern, Corinthian of Seattle, and Seattle Yacht Clubs

We must share Puget Sound with its commercial traffic, including many deep-water vessels and tows. It is sobering to note that, if your boat is one mile dead-ahead of a freighter coming down the Sound at normal speed, and the freighter's helm is put hard over to avoid you, the freighter's bow will miss you, but her stern will not! Obviously, this implies that early and decisive action is required to keep your boat out of the path of a large oncoming vessel or tow.

1. Yachts must not sail across a tow line, too close ahead, or too close alongside of commercial traffic. Deep water vessels have limited ability to change course and speed. Barges under tow can yaw unexpectedly well out to the side at speeds essentially the same as they are being towed. Yachts should not pass less than one mile ahead and 1/4 mile to the side of large vessels.
2. Rule 10 of the International and Inland Rules to Prevent Collisions at Sea (COLREGS) requires that no power-driven vessel less than 20 meters (66 feet) in length, and no sailing vessel (of any size) may impede the safe passage of a power-driven vessel following a Vessel Traffic System (VTS) Lane.
3. Rule 9 of the COLREGS requires that no power vessel of less than 20 meters (66 feet) in length and no sailing vessel (of any length) shall impede the safe passage of any vessel which can navigate only within a narrow channel or fairway. Puget Sound can be considered a "narrow channel" for most large commercial traffic. "Impede" means to cause to alter speed or course or to take evasive action.
4. A yacht in position where it may impede commercial traffic must exit from the "danger area" immediately, under auxiliary power if necessary. If power is used, it must be reported to the Race Committee at the finish line. Also, a written report must be made on a protest form, showing the location, time, duration of power use, speed, direction of exit, and that the competitive position of the yacht was not improved. If the last item cannot be demonstrated adequately, a time penalty may be imposed.
5. Radar reflectors must be flown at all times when racing. They must meet IMO recommendations (i.e., of metal plates of sufficient rigidity to maintain a 90 degree angle), be not less than 12 1/2 inches in diameter, and be installed not less than 4 meters (13 ft.) above the water. See PIYA Special Regulations paragraph 3.8.
6. Navigation lights must be shown between sunset and sunrise as required by the International Rules of the Road.
7. Observed and/or reported violations of the safety regulations may be protested. The Race Committee shall have the option of issuing a "warning" when deemed appropriate. Warnings are recorded and may be considered when judging any future reports.

Buoy Course Marks (position relative to R/C)

Please note that the Sailing Instructions for a particular race may use modified or different mark descriptions than described here.

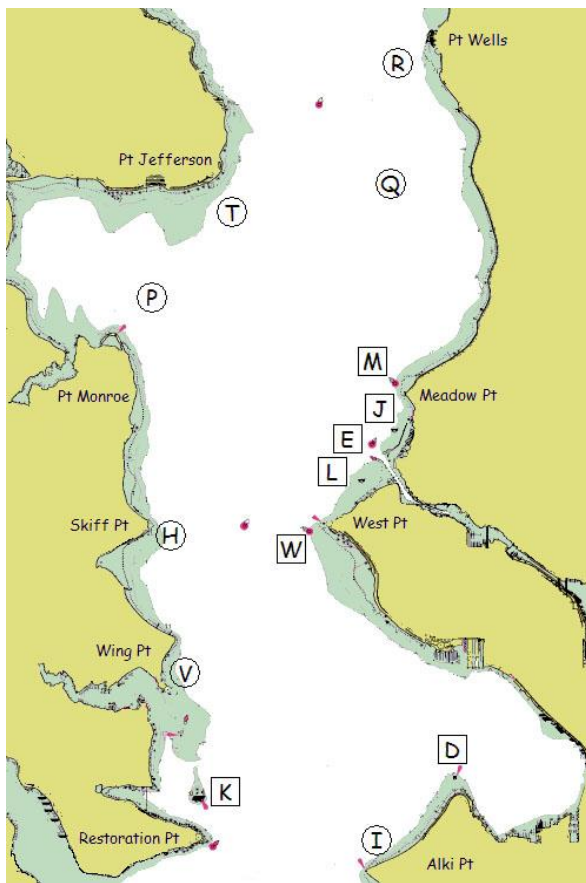


The course diagram for buoy course marks shows the general orientation of the race committee signal boat ("R/C"), other marks (identified by the letters S, A, B, C, O, G, X, Y, Z and F), and the intended wind direction. All marks other than the race committee signal boat are inflatable buoys. Positions are approximate and the diagram is not to scale.

Notes:

- S When a starting mark for a downwind start, may be on either side of the race committee signal boat.

Geographic Marks (position based on location)



Bearings are magnetic. Distances are nautical miles (NM). Bearings, distances, and positions are approximate. Each temporary mark is shown with its label in a circle. Each permanent mark is near its label in a square box.

- D Duwamish Head Lt. (LL #16910)
- E Shilshole Bay Approach Buoy (LL #16785)
- H Temporary mark 0.3 NM E of Skiff Pt.
- I Temporary mark 0.5 NM N of Alki Pt.
- J Shilshole Bay N Mooring Buoy 0.25 NM SSW of N entrance
- K Blakely Rock (LL #16830)
- L Shilshole Bay S Mooring Buoy 0.5 NM SW of S entrance
- M Meadow Pt. Buoy (LL #16765)
- P Temporary mark 0.75 NM NNE of Pt. Monroe
- Q Temporary mark 3.0 NM bearing 340° from Meadow Pt. Buoy
- R Temporary mark 0.5 NM SW of Pt. Wells
- T Temporary mark 0.5 NM SE of Pt. Jefferson
- V Temporary mark 0.3 NM NNE of Wing Pt.
- W West Pt. Buoy (LL #16805)

Please thank our sponsors for supporting sailing through SYC





www.seattleyachtclub.org