



Seattle Yacht Club

Established in 1892

SAILBOAT RACE BOOK

2012





Shoot the Moon – Seattle Yacht Club 2011 Sailboat of the Year

Seattle Yacht Club Sailboat Race Book 2012

1807 East Hamlin Street
Seattle, Washington 98112

www.seattleyachtclub.org

SYC Front Desk	206.325.1000
Sailing Office	206.926.1011
Sailing Office Fax	206.324.8784

Table of Contents

Welcome to the 2012 Sailing Season.....	1
Sailboat Activity Calendar	2
Race Registration Procedure.....	3
Registration Checklist.....	4
SYC Sailboat Racing Program.....	5
Overview of Sailboat Racing Events	5
SYC General Notice of Race.....	7
Notice of Race SYC Tri-Island Smith Island Race	10
Notice of Race SYC Mark Mayer Regatta	11
Notice of Race SYC Tri-Island Vashon Island Race.....	12
Race Information Sperry Top-Sider NOOD Regatta	14
Notice of Race SYC Tri-Island Blake Island Race.....	14
Notice of Race SYC Jack & Jill Race	16
Notice of Race SYC Star & Bar Regatta.....	17
Race Information SYC Grand Prix Invitational Regatta	18
SYC Deception Class Mini-12 Fleet.....	21
SYC Sailboat Cruising Program	23
Overview of Sailboat Cruising Events	23
Winter and Spring Power/Sail Mini Cruises	24
Leukemia Cup Regatta	25
Notice of Race SYC Cruise & Snooze.....	26
NorPac Regatta Barkley Sound, British Columbia.....	27
SYC Sailing School and Junior Race Team	28
Summer Sailing School	28
Junior Race Team	29
Tuesday Night (Family Night) Race Series.....	29
High School Sailing at SYC.....	29
Opti Green Fleet Program	30
Adult Sailing Courses.....	30
Private Sailing Lessons.....	30
The Small Boat Fleet at SYC.....	31
Sailing Office Contact Information	32
Awards and Recognition	33
Junior Sailing Awards.....	33
Outstanding Achievement in Sailing.....	33
Sailing Performance Awards	34
Appendix	37
Sailing Program Leadership Team.....	37
Sailing Program Contacts	38
Puget Sound Sailboat Safety Regulations	39
Buoy Course Marks (position relative to R/C).....	40
Geographic Marks (position based on location)	41

Welcome to the 2012 Sailing Season



The Seattle Yacht Club organizes a broad range of public events to promote boating in the Pacific Northwest and help people find those unique life experiences available under sail. Why do we do it? Because a world with more boating and sailing is the world we want to live in, and we feel so good about it we want to open the community and share the lifestyle with more people.

Our events happen because particular people decide to take action, as follows: (1) A couple dozen member and guest volunteers plan and run the events, (2) the members of Seattle Yacht Club and their leadership choose to allocate coveted funds into programs that mitigate expenses but don't cover their total costs, and (3) hundreds of people get their families and friends on the water and into our events. Whichever role you play, thank you! Your participation makes more sailing happen and enriches the lives of everyone involved.

Fred Pot is our Cruising Activities Chair providing his energetic leadership on cruising events and sailboat dinners. The dinners are scheduled for the second Thursday most months and feature speakers on sailing topics. This is a great place to meet other cruisers and racers and introduce guests to the Club.

Karole Sherlock is our Director of Racing Operations. Under Karole's leadership, volunteers will have excellent instruction on specific race committee duties. Please contact Karole to get out on the water as a member of the race committee team providing top level racing services to our regatta participants.

SYC is continuing our longstanding involvement in the Leukemia Cup, with a low-key race/parade around Elliott Bay and a huge party on site at Elliott Bay Marina. In parallel with your individual causes, whatever they may be, please consider joining your fellow boaters at this fun and meaningful event. By pooling our efforts, the Leukemia Cup gives us a ready-made opportunity to make a major charity expression in the name of our boating community.

The T-37 remote control boat program lead by Allan Van Ness is really taking off. This program includes regular 'fun' races and some more serious championships. Anyone can play, the cost of entry is low, and the community is welcoming. Contact Allan to get involved.

The cruiser/race class is continuing to generate interest. These boats sail with fewer crew on shorter, relaxed courses while the more racey boats sail their longer courses. Start your cruiser/racer season by signing up for Tri-Island.

The Sailboat Committee meetings are at 6:30 p.m. on the first Thursday of most months. Whatever your interest in sailing, please come and lend a hand.

Brian Watkins,
Fleet Captain Sail

Sailboat Activity Calendar

JANUARY

- 5 Sailboat Committee Meeting
- 7-8 Mini-Cruise to Port Madison
- 12 Sailboat Dinner
- 28-29 Mini-Cruise to Eagle Harbor

FEBRUARY

- 2 Sailboat Committee Meeting
- 9 Sailboat Dinner

MARCH

- 1 Sailboat Committee Meeting
- 3-4 High School Opener Regatta
- 3-4 Mini-Cruise to Gig Harbor
- 8 Sailboat Dinner

APRIL

- 5 Sailboat Committee Meeting
- 12 Sailboat Dinner
- 14-15 Mini-12 Interclub Regatta
- 21-22 Mini-Cruise to Bremerton
- 28-29 Smith Island Race

MAY

- 5 Opening Day
- 6 Mark Mayer Regatta
- 10 Sailboat Committee Meeting
- 11-13 High School Nat'l's (Mallory)
- 12 Vashon Island Race
- 18-20 NOOD Regatta
- 22 Sailboat Dinner (w/Power)
- 26-27 Mini-Cruise to Poulsbo

JUNE

- 2 Blake Island Race
- 7 Sailboat Committee Meeting
- 9 Leukemia Cup
- 14 Power/Sail Dinner
- 14-17 CSR Marine Melges 24 Nat'l's
- 23-24 Cruise & Snooze A/B

JULY

- 3 Mini-Cruise to Liberty Bay
- 15-20 NORPAC
- 26-5 Skookum Cruise
- 28 SYC Jack & Jill Race

AUGUST

- 18-19 McCurdy Trophy Regatta
- 25-26 Junior Olympics

SEPTEMBER

- 6 Sailboat Committee Meeting
- 8-9 Cruise & Snooze C/D
- 13 Sailboat Dinner
- 15-16 Star and Bar Regatta

OCTOBER

- 11 Power/Sail Dinner
- 25 Sailboat Cmte Meeting (@CYC)
- 26-28 Grand Prix Regatta

NOVEMBER

- 1 Sailboat Committee Meeting
- 8 Sailboat Dinner
- 16 Sailing End of Season Party

DECEMBER

- 6 Sailboat Committee Meeting
- 13 Sail/Power Gift Exchange

Race Registration Procedure

Online Registration

Online race registration is available from the Seattle Yacht Club website at www.seattleyachtclub.org under "Sailing / Regattas".

Entry Forms

Race entry forms are available at the Seattle Yacht Club Portage Bay clubhouse front desk. Please return your completed form with entry fees to the attention of the Sailing Office at the Seattle Yacht Club.

Deadlines

Registrations must be submitted online or received by Seattle Yacht Club by close of business (normally 1700 hours) on the entry deadline for each race. The deadline is typically the Thursday preceding the race unless otherwise indicated in the Notice of Race. Registrations accepted at the discretion of the race committee after the deadline may be assessed a \$20 late fee.

Season Fee Package

A season fee is available for the Tri-Island Series, SYC Jack & Jill, Mark Mayer, and Star & Bar. The deadline is the deadline for the first race in the package.

Contact

For registration issues, please contact the SYC Sailing Director, Brian Ledbetter, in the SYC Sailing Office.

Phone: 206.926.1011. Fax: 206.324.8784. Email: brianl@seattleyachtclub.org



Thank you for racing and making our sport stronger. Every boat counts!

Registration Checklist

Date	Event	Cruiser/ Racer	Entry Fee	Deadline ³	Enter
(6 events)	Season Package (TI, SYC J&J, MM, S&B)	Partial	\$255	April 26	<input type="checkbox"/>
(3 events)	Tri-Island Package	Yes	\$150	April 26	<input type="checkbox"/>
April 28	Smith Island (Tri-Island #1)	Yes	\$60 ¹	April 26	<input type="checkbox"/>
May 6	Mark Mayer	Yes	Free	May 4	<input type="checkbox"/>
May 12	Vashon Island (Tri-Island #2)	Yes	\$60 ¹	May 10	<input type="checkbox"/>
May 18-20	Sperry Top-Sider NOOD Regatta (Sailingworld.com)		See NOR	May 7	<input type="checkbox"/>
June 2	Blake Island (Tri-Island #3)	Yes	\$60 ¹	May 31	<input type="checkbox"/>
June 9	Leukemia Cup	Yes	\$150	ASAP	<input type="checkbox"/>
June 14-17	CSR Melges 24 Nat'l's		\$395	June 4	<input type="checkbox"/>
June 23-24	Cruise & Snooze A/B*	Yes	\$50	June 21	<input type="checkbox"/>
July 15-20	NORPAC	Yes	\$150	June 15	<input type="checkbox"/>
July 28	SYC Jack & Jill		\$40 ¹	July 26	<input type="checkbox"/>
Sept 8-9	Cruise & Snooze C/D*	Yes	\$50	Sept 6	<input type="checkbox"/>
Sept 15-16	Star & Bar Regatta		\$105 ¹	Sept 13	<input type="checkbox"/>
Oct 26-28	Grand Prix Invitational Boats under 30' 30' to under 40' 40' and over	Yes	\$135 ² \$170 ² \$205 ²	Oct 24	<input type="checkbox"/>

¹ Season Package for the Tri-Island Series, SYC Jack & Jill, Mark Mayer, and Star & Bar is available for \$255. Tri-Island Series Package is available for \$155.

² An early signup discount of \$20 available for Grand Prix (within 2 weeks of first qualification or by May 1).

³ Registrations received after close of business on deadline may be assessed a \$20 late fee.

* Requires membership for use of outstations.

SYC Sailboat Racing Program

With events ranging from one-design championships to the longer-distance Tri-Island races, Seattle Yacht Club actively promotes a variety of racing here in the great Pacific Northwest. In this section:

- Overview of Sailboat Racing Events
- General Notice of Race
- SYC Smith/Protection Island Race
- SYC Mark Mayer Regatta
- SYC Vashon Island Race
- Sperry Top-Sider NOOD Regatta
- SYC Blake Island Race
- SYC Jack & Jill Race
- SYC Star & Bar Regatta
- SYC Grand Prix Invitational Regatta

Overview of Sailboat Racing Events

Hosted Regattas

Each year we look to bring in a regional or national regatta to host locally. This year we are proud to be hosting the **CSR Marine 2012 Melges 24 US National Championship** and helping to host the **High School Sailing National Championship**. See our website for additional information about these events.

Tri-Island Series

The Tri-Island series continues the tradition of offering longer courses to test your stamina and strategic knowledge of Puget Sound. At the end of the series, the club will open its doors to all those who have participated for an awards party. A shorter Cruiser/Racer course will be offered for each race.

Smith/Protection Island Race

Alternating between Smith Island and Protection Island each year, these courses are our longest race for the year, with several challenging decision points and the opportunity to experience more wind, waves, and current conditions than normal.

Vashon Island Race

The Vashon Island course is one of the most popular races with several distinct racing phases. Get ahead and go for a breakaway, or, if not so fortunate, hope to bring the wind to your competitors waiting at the next corner. These tactical courses will take you south with scenic views of Elliott Bay and Mt. Rainier.

Blake Island Race

Whether you're testing your mettle or rolling the dice, you select which way to round Blake Island. Finish off Elliott Bay Marina with series awards party at the Seattle Yacht Club Elliott Bay Station.

Mark Mayer Regatta

The Mark Mayer Regatta is coordinated with the Opening Day weekend. The course is just north of the Evergreen Point Bridge on Lake Washington. A post-race party will be at the Seattle Yacht Club Portage Bay clubhouse.

Sperry Top-Sider NOOD Regatta

The National Offshore One Design (NOOD) Regatta, sponsored by Sperry Top-Sider and organized by Sailing World Magazine, is co-hosted by Seattle Yacht Club and Corinthian Yacht Club of Seattle. The regatta celebrates tight buoy racing and May is a great month for sailing. Make sure your one-design or level-rated class is signed up early! Each night will feature a post-race party.

SYC Jack and Jill Race

The SYC Jack & Jill is part of the Puget Sound Jack & Jill interclub series. The SYC race is out of Elliott Bay Marina with a social at our station afterwards and free guest moorage Friday and Saturday for an in-town getaway.

Star & Bar Regatta

This two-day regatta tests around-the-buoys racing skills, with September providing a good chance for dependable wind and warm weather on the last weekend of the summer. Classes for both one-design and PHRF will be available. Post-race parties each day after racing.

Grand Prix Invitational Regatta

The season's racing activities culminate with the Grand Prix Invitational Regatta. Boats must qualify for this prestigious invitation-only event. Whole one design fleets with representative qualifiers may also be invited. Grand Prix primarily tests buoy racing skills and, if conditions are right, middle distance racing skills over a three-day period with parties every evening.



Cruiser/Racer competition at Tri-Island, Mark Mayer, and Cruise & Snooze

SYC General Notice of Race

A Notice of Race may be amended by the SYC General Notice of Race. If the SYC General Notice of Race and a Notice of Race are in conflict, the Notice of Race shall have precedence.

The organizing authority is the Seattle Yacht Club (SYC).

1 Rules

- 1.1 This regatta will be governed by the rules as defined in the Racing Rules of Sailing (RRS).
- 1.2 The prescriptions of US Sailing to the following rules shall apply: 34, 40, 48, 55, 60, 61.4, 63.2, 63.4, 64.3(b), 68, 70.5(a), 76.1, 76.3, 82, 86.3, 88.2, Appendix F, and G2. The text of these prescriptions is available from the US Sailing web site at raceadmin.ussailing.org/rules/prescriptions.
- 1.3 Other changes to the rules may be noted elsewhere in the Notice of Race or Sailing Instructions. If the Notice of Race and Sailing Instructions are in conflict, the Sailing Instructions shall have precedence.
- 1.4 Changes to the Notice of Race will be available from the Seattle Yacht Club web site at www.seattleyachtclub.org or, if not available from the web site, on the notice board at the Seattle Yacht Club south entrance.

2 Eligibility and Entry

- 2.1 Entrants must register online at www.seattleyachtclub.org, or by form delivered to Seattle Yacht Club, and pay appropriate fees by the registration deadline. Registration after the deadline may be accepted at the discretion of the organizing authority and may require an additional late fee.
- 2.2 A boat wishing to use sails with identification different from her own must notify and receive permission to do so from the organizing authority by the registration deadline or when her late registration is accepted. This changes RRS 77.
- 2.3 A boat racing in a handicap class must ensure that her correct rating is issued and recorded by the class organization by the registration deadline or when her late registration is accepted. Boats participating without a valid class certificate will not be entered or scored and her entry fee may not be refunded.
- 2.4 A change in a boat's handicap class rating will take effect on the day it is recorded by the class organization. Changes are not retroactive. When a boat's rating changes between races that are part of a series, the boat shall remain in the same class in which she started the series.
- 2.5 A boat rated by her handicap class in consideration of water ballast may use water ballast as rated. This changes RRS 51.

3 Operating and Equipment Requirements

- 3.1 Sailing is an activity that has an inherent risk of damage and injury. Competitors in this event are participating entirely at their own risk. See RRS 4, Decision to Race. The responsibility for a boat's decision to participate in a race or to continue racing is hers alone. The race organizers (organizing authority, race committee, protest committee, host club,

sponsors, or any other organization or official) will not be responsible for damage to any boat or other property or the injury to any competitor, including death, sustained as a result of participation in this event. By participating in this event, each competitor agrees to release the race organizers from any and all liability associated with such competitor's participation in this event to the fullest extent permitted by law.

3.2 A boat racing in a handicap class must comply with one of the two following sets of equipment requirements, (a) or (b):

(a) *Pacific International Yachting Association (PIYA) Special Regulations Governing Minimum Equipment and Accommodation Standards* (PIYASR) according to the category requirement identified in the Notice of Race. The text of these regulations is available from the PIYA web site at www.piyasailing.net. The following changes apply:

(1) PIYASR 3.8 interpreted that a radar reflector with any dimension less than 6 inches does not meet the requirement.

NOTICE: The PIYASR option will not be available for 2013 season.

(b) *ISAF Offshore Special Regulations (OSR)*, without US Sailing prescriptions, according to the category requirement identified in the Notice of Race. The text of these regulations is available from the International Sailing Federation (ISAF) web site at www.sailing.org/documents/special-regs. The following changes apply to OSR Categories 3 and 4:

(1) OSR 3.02.1, 3.11, 3.19, and 3.22 not required for boats under 9 meters or boats under 12 meters with crew torso position inboard and mostly below the local sheerline except briefly to perform a necessary task.

(2) OSR 3.12 not required.

(3) OSR 3.14 not required for boats under 9 meters without lifelines or boats under 12 meters without lifelines with crew torso position inboard and mostly below the local sheerline except briefly to perform a necessary task.

(4) OSR 3.27.5 not required for permanently sealed, non-serviceable LED fixtures.

(5) OSR 3.28.1 required as in Category 3. If using outboard motor, it shall be on its operating mount and easily inserted into the water for immediate use including during severe sea and wind conditions.

(6) OSR 3.28.3 required as in Category 3 and (b) duration requirement changed to 6 hours.

(7) OSR 3.29.1 (a)(i) changed to "an emergency antenna" and (b)(ii) not required.

(8) OSR 4.04.2 (c) not required.

(9) OSR 4.06.1 each anchor required must include anchor and 150' of rode consisting of chain and line with rode minimum weight $LOA^2/80$ lbs. and combined anchor and rode minimum weight of $(LOA/17)^3 + LOA^2/80$ lbs. (LOA in feet.)

- (10) OSR 4.07.1 (b) changed to "two watertight flashlights".
 - (11) OSR 4.10.1 (a)(iii) radar reflector must have a minimum dimension of 150 mm (6 inches) or greater.
 - (12) OSR 4.14 not required.
 - (13) OSR 4.26.4 (f) and (g) not required.
 - (14) OSR 5.01.1 (a) and (b) replaced by US Sailing prescription to RRS 40, (c) required from one hour before sunset until sunrise.
- 3.3 Boats must comply with U.S. Coast Guard regulations.
 - 3.4 Boats must be operated in accordance with the Puget Sound Sailboat Safety Regulations, available from the Seattle Yacht Club web site at www.seattleyachtclub.org.
 - 3.5 The race committee may inspect a boat any time before or after racing for compliance with requirements.
 - 3.6 Penalties under SYC General Notice of Race 3 may be less than disqualification. This changes RRS 64.1(a).
- 4 Scoring
 - 4.1 The time limit is the maximum allowable time from each boat's starting signal to her finish time or a time of day. Boats that do not finish within their time limit will be scored Did Not Finish (DNF). This changes RRS 35.
 - 4.2 A boat that did not start (DNC, DNS, OCS), did not finish (DNF), retired after finishing (RAF), or is disqualified (DSQ, DNE, DGM, BFD) will be scored the number of finishers plus one. This changes RRS A4.2 and A9.
 - 5 Sailing Instructions
 - 5.1 Sailing Instructions will be available by the Thursday before the first race from the Seattle Yacht Club web site at www.seattleyachtclub.org or, if not available from the web site, on the notice board at the Seattle Yacht Club Portage Bay clubhouse south entrance.



m/v Portage Bay

Notice of Race

SYC Tri-Island Smith Island Race

Date: April 28, 2012 (Saturday)

Location: Northern Puget Sound, Admiralty Inlet, and southeastern Straits of Juan de Fuca. The starting line and finishing line will be in Shilshole Bay between Meadow Point and the Shilshole Bay Approach Buoy.

Course:

Long Course: Start by leaving the starting mark to port, round Minor Island to port, round Smith Island to port, and finish by leaving the finishing mark to port.

Short Course: Start by leaving the starting mark to port, round Double Bluff Lighted Buoy 1 (LL #16525) to port, and finish by leaving the finishing mark to port.

Sport Boat Course: Same as short course (scored separately).

Cruiser/Racer Course: Start by leaving the starting mark to port, round a temporary mark located off Edmonds at approximately 47° 53.0' N, 122° 24.0' W (47.88N 122.40W) to port, and finish by leaving the finishing mark to port.

Time of First Warning: 0900

Time Limits:

Long Course:	30 hours
Short Course / Sport Boat Course:	12 hours
Cruiser/Racer Course:	8 hours

Classes to Race: PHRF-NW, including Cruiser/Racer, and one-design keelboat

Equipment Requirement Category:

Long Course:	PIYASR II or OSR 3
Short Course / Sport Boat Course:	PIYASR III or OSR 4
Cruiser/Racer Course:	PIYASR III or OSR 4

Other Provisions:

- Notice of Race amended by the SYC General Notice of Race.
- The short course is available to boats rating 75 and slower. The sport boat course is open to boats 33 feet and less rating faster than 75.
- A shortened course option will be available for boats that take their time at a designated shortened course option finishing line. Boats using the shortened course option will be considered finishers and will be scored in class and overall based on their time and the distance for the shortened course starting immediately behind boats finishing the full course.
- This race is part of the SYC Tri-Island Series. There will be no scoring exclusions for the series. This changes RRS A2.

Awards: 1st overall on each course. For the Tri-Island Series, 1st overall per course and 1st, 2nd, 3rd in class. Awards will be presented at the awards party.

Social Activities: The series Awards Party will be at the SYC station at Elliott Bay Marina from 5 to 9 PM after the Blake Island race. The party will have free appetizers, a no-host bar, music, and participation prizes for each boat.

Registration Deadline: April 26, 2012 (Thursday)

Registration Fee: \$60 (or \$150 for SYC Tri-Island Series)

Chairpersons: Rhonda Halfman, 425-246-3612, rhondaha@gmail.com

Phil Calvert, 206-910-7977, phil.calvert@comcast.net

Mike Milburn, 206-780-2525, milburn69802@msn.com

Gary Morgan, 206-303-7411, soling2003@hotmail.com



Young sailors waiting for the Shilshole wind to come up at the SYC Jr. Olympics

Notice of Race SYC Mark Mayer Regatta

Date: May 6, 2012 (Sunday)

Location: Lake Washington north of the SR520 Bridge. The start and finish will be in the area between Webster Point, Hunts Point, and Sand Point.

Course: One buoy race will be sailed. The courses will be as designated in the Sailing Instructions.

Time of First Warning: 1200

Time Limit: 4 hours

Classes to Race: PHRF-NW, including Cruiser/Racer, and one-design keelboat

Equipment Requirement: US Coast Guard regulations

Other Provisions: Notice of Race amended by the SYC General Notice of Race.

Awards: 1st, 2nd, and 3rd place in class

Social Activities: Party immediately after the race at Seattle Yacht Club.

Registration Deadline: May 4, 2012 (Friday)

Registration Fee: Free!

Event Chairperson: Dan Krier, 206-323-2405, dan@marinesc.com

Notice of Race

SYC Tri-Island Vashon Island Race

Date: May 12, 2012 (Saturday)

Location: Puget Sound. The starting line and finishing line will be in Shilshole Bay between Meadow Point and the Shilshole Bay Approach Buoy.

Course:

Long Course: Start by leaving the starting mark to port, round Maury Island and Vashon Island to starboard, and finish by leaving the finishing mark to port.

Short Course: Start by leaving the starting mark to port, round a temporary buoy north of Point Robinson at approximately 47° 24.0' N, 122° 23.0' W (47.40N 122.38W) to port, and finish by leaving the finishing mark to port.

Sport Boat Course: Same as short course (scored separately).

Racer/Cruiser Course: Start by leaving the starting mark to port, round Blakely Rocks ("K") to port, round the Duwamish Head Light ("D") to port, and finish by leaving the finishing mark to port.

Time of First Warning: 0900

Time Limit:

Long Course: 19 hours

Short Course / Sport Boat Course: 12 hours

Cruiser/Racer Course: 7 hours

Classes to Race: PHRF-NW, including Cruiser/Racer, and one-design keelboat

Equipment Requirement Category:

Long Course: PIYASR II or OSR 3

Short Course / Sport Boat Course: PIYASR III or OSR 4

Cruiser/Racer Course: PIYASR III or OSR 4

Other Provisions:

- Notice of Race amended by the SYC General Notice of Race.
- The short course is available to boats rating 75 and slower. The sport boat course is open to boats 33 feet and less rating faster than 75.
- A shortened course option will be available for boats that take their time at a designated shortened course option finishing line. Boats using the shortened course option will be considered finishers and will be scored in class and overall based on their time and the distance for the

shortened course starting immediately behind boats finishing the full course.

- This race is part of the SYC Tri-Island Series. There will be no scoring exclusions for the series. This changes RRS A2.

Awards: 1st overall on each course. For the Tri-Island Series, 1st overall per course and 1st, 2nd, 3rd in class. Awards will be presented at the awards party.

Social Activities: The series Awards Party will be at the SYC station at Elliott Bay Marina from 5 to 9 PM after the Blake Island race. The party will have free appetizers, a no-host bar, music, and participation prizes for each boat.

Registration Deadline: May 10, 2012 (Thursday)

Registration Fee: \$60 (or \$150 for SYC Tri-Island Series)

Chairpersons: Rhonda Halfman, 425-246-3612, rhondaha@gmail.com

Phil Calvert, 206-910-7977, phil.calvert@comcast.net

Mike Milburn, 206-780-2525, milburn69802@msn.com

Gary Morgan, 206-303-7411, soling2003@hotmail.com



Finishing the final race after a very full day of racing at the NOOD Regatta

Race Information

Sperry Top-Sider NOOD Regatta

The Seattle Yacht Club and the Corinthian Yacht Club of Seattle will be hosting the National Offshore One Design (NOOD) Regatta in Seattle. The information below is subject to change. DEADLINE for classes to form is May 7, 2012 (Monday).

Dates: May 18-20, 2012 (Friday, Saturday, and Sunday)

Classes to Race: One design or level rated classes, as follows:

- Keelboat classes may include Santana 20, San Juan 24, Thunderbird, Star, Moore 24, J/24, 6 Meter, Etchells, J/105, Melges 24, J/109, Melges 32, C&C 115 and other keelboat classes with a prospective minimum of 7 boats registered.
- Centerboard classes may include Laser, Laser Radial, Snipe, Vanguard 15, Tasar, International 14, Thistle, 505, 49er, A-Cat, and other centerboard classes with a prospective minimum of 7 boats registered.

Registration and Information: www.sailingworld.com

Contacts: Roger Pawley, 425-890-2751, sailrap@msn.com
Steve Travis, 425-753-2701, stravis998@aol.com

Notice of Race

SYC Tri-Island Blake Island Race

Date: June 2, 2012(Saturday)

Location: Puget Sound. The starting line will be in Shilshole Bay between Meadow Point and the Shilshole Bay Approach Buoy. The finishing line will be in the northern part of Elliott Bay near or between Elliott Bay Marina and West Point.

Course:

Long Course: Start by leaving the starting mark to port, round Blake Island to port or starboard, round a temporary mark approximately 0.2 NM SSE of West Point Lighted Buoy 1 (LL #16805) to starboard, and finish by leaving the finishing mark to starboard.

Short Course: Same as long course.

Sport Boat Course: Same as long course (scored separately).

Racer/Cruiser Course: Same as long course, however, if the race committee signal boat displays flag "S" at the warning signal, start by leaving the start mark to port, round Decatur Reef Lighted Buoy 2 off Restoration Point (LL #16835) to port, and finish by leaving the finishing mark to starboard.

Time of First Warning: 0900

Time Limits:

Long Course: Earlier of 8 hours or 1900

Short Course / Sport Boat Course: Earlier of 8 hours or 1900

Cruiser/Racer Class Course: Earlier of 8 hours or 1900

Classes to Race: PHRF-NW, including Cruiser/Racer, and one-design keelboat

Equipment Requirement Category: PIYASR III or OSR 4

Other Provisions:

- Notice of Race amended by the SYC General Notice of Race.
- The short course is available to boats rating 75 and slower. The sport boat course is open to boats 33 feet and less rating faster than 75.
- A shortened course option will be available for boats that take their time at a designated shortened course option finishing line. Boats using the shortened course option will be considered finishers and will be scored in class and overall based on their time and the distance for the shortened course starting immediately behind boats finishing the full course.
- This race is part of the SYC Tri-Island Series. There will be no scoring exclusions for the series. This changes RRS A2.

Awards: 1st overall on each course. For the Tri-Island Series, 1st overall per course and 1st, 2nd, 3rd in class. Awards will be presented at the awards party.

Social Activities: The series Awards Party will be at the SYC station at Elliott Bay Marina from 5 to 9 PM after the Blake Island race. The party will have free appetizers, a no-host bar, music, and participation prizes for each boat.

Elliott Bay Marina has offered free guest moorage, based on availability, for Friday and Saturday nights. At our request, boats will be assigned to raft on the east side of easternmost pier, dock N. Please contact the marina for availability and assignment at 206-285-4817 or VHF 78A.

Registration Deadline: May 31, 2012 (Thursday)

Registration Fee: \$60 (or \$150 for SYC Tri-Island Series)

Chairpersons: Rhonda Halfman, 425-246-3612, rhondaha@gmail.com

Phil Calvert, 206-910-7977, phil.calvert@comcast.net

Mike Milburn, 206-780-2525, milburn69802@msn.com

Gary Morgan, 206-303-7411, soling2003@hotmail.com



Race committee volunteers working aboard *Portage Bay*

Notice of Race

SYC Jack & Jill Race

Date: July 28, 2012 (Saturday)

Location: Puget Sound in the vicinity of Elliott Bay and Shilshole Bay. The race committee signal boat will make its first signal in the northern part of Elliott Bay near or between Elliott Bay Marina and West Point.

Course: The courses will be as designated in the Sailing Instructions.

Skipper's Meeting: 1130 at SYC Elliott Bay outstation at Elliott Bay Marina

Time of First Warning: 1300

Time Limit: The time limit will be defined in the Sailing Instructions and will not exceed 5 hours.

Classes to Race: PHRF-NW

Equipment Requirement Category: PIYASR III or OSR 4

Other Provisions:

- Notice of Race amended by the SYC General Notice of Race.
- There will be up to three classes: Jack & Jill (crew of one male and one female), Double Handed (two crew total), and Single Handed (one crew total). Entrants in the Jack & Jill class will also be entrants in the Double Handed class.
- Children 12 or under and up to two other guests are allowed on board, but may not help sail the boat or hike outside the cockpit.
- Boats may elect to use flying sails or not during the race. Boats will be rated for flying sails by default. Boats will be rated for non-flying sails if they do not use flying sails and immediately after finishing report to the race committee signal boat that they did not use flying sails. This is not a separate class.
- No auto pilots or wind vanes are allowed.
- All crew must wear a USCG certified personal flotation device while racing.

Awards: 1st, 2nd, and 3rd place in class. There will also be a 1st place award for the lowest scoring non-flying sails boat in the Jack & Jill class.

Social Activities: All competitors are invited to attend the awards presentation at the Seattle Yacht Club Elliott Bay station after racing.

Moorage: Elliott Bay Marina has offered free guest moorage, based on availability, for Friday and Saturday nights. At our request, boats will likely be assigned to raft on the east side of easternmost pier, dock N. Please contact the marina for availability and assignment at 206-285-4817 or VHF 78A.

Registration Deadline: July 26, 2012 (Thursday). Note: Register at skipper's meeting if absolutely necessary.

Registration Fee: \$40

Chairperson: Brian Watkins, 206-276-1445, brian.watkins.sail@live.com

Notice of Race SYC Star & Bar Regatta

Date: September 15-16, 2012 (Saturday and Sunday)

Location: Puget Sound in the vicinity of Shilshole Bay and the area north of Meadow Point.

Course: The courses will be as designated in the Sailing Instructions.

Time of First Warning: 1030 each day

Time Limit: In the Sailing Instructions and will not exceed 2 hours per race.

Classes to Race: PHRF-NW and one-design keelboat

Equipment Requirement Category: PIYASR III or OSR 4 (for handicap classes)

Other Provisions: Notice of Race amended by the SYC General Notice of Race.

Awards: 1st, 2nd, and 3rd place in class

Social Activities: Parties after each day of racing at CYC Shilshole clubhouse.

Registration Deadline: September 13, 2012 (Thursday)

Registration Fee: \$105

Chairperson: Gary Morgan, 206-303-7411, soling2003@hotmail.com



The Star & Bar Regatta stands ready to serve one design fleets

Race Information

SYC Grand Prix Invitational Regatta

Note: This is an informal announcement, not a Notice of Race, and is not part of the rules of the event. For more information, please see the Notice of Race at www.seattleyachtclub.org under Sailing / Regattas.

Dates: October 26-28, 2012 (Friday, Saturday, and Sunday)

Location: The racing area is Puget Sound north of Alki Pt. and south of Pt. Wells. The starting line will be in the vicinity of Shilshole Bay and the area north of Meadow Point.

Course: One or more buoy or mid-distance races may be sailed each day. The courses will be as designated in the Sailing Instructions.

Scheduled Time of First Warning:

Friday: 1330
Saturday and Sunday: 1030

Classes to Race: Classes to race are PHRF Northwest handicap and one-design keelboats of at least 24 feet. Monohull, multihull, and cruiser/racer boats will race in separate classes. Other classes may race at the discretion of the organizing authority.

Other Provisions:

- Qualifying Events – Only boats that qualify based on their performance in selected races in the prior year and are invited, at the discretion of the organizing authority, will be eligible to register. Boats may also qualify at the discretion of the organizing authority. For more information, see the Qualifying Events section, below.
- One Design Fleets – A whole one-design class may qualify if several boats of the class have qualified and can register a number of boats suitable for a one design class start. For more information, please contact the regatta organizers listed below.
- A cruiser/racer class will be open to boats that competed in the cruiser/racer class of any Seattle Yacht Club race.
- Permanent trophy recognition will be awarded for each class.
- The race committee will have on-the-water discretion to run one or more races each day with an emphasis on buoy courses.

Awards: 1st, 2nd, and 3rd place in class

Social Activities: There will be parties after racing each day. The awards dinner will be after racing on Sunday at Seattle Yacht Club.

Registration Deadline: October 24, 2012 (Wednesday)

Registration Fee (based on boat length):

Under 30': \$135
30' to under 40': \$170
40' and over: \$205

Chairpersons: Paul Walchenbach, 206-948-7095, paul@walchenbachlaw.com
Brian Watkins, 206-276-1445, brian.watkins.sail@live.com

Qualifying Events:

The following events are qualifiers in racing classes with at least four boats registered:

Seattle Yacht Club Events (1st, 2nd or 3rd in class)

- | | |
|------------------------------------|-------------------------------------|
| SYC Tri-Island Series and races: | SYC Mark Mayer Regatta |
| SYC Smith / Protection Island Race | SYC Jack & Jill Regatta |
| SYC Vashon Island Race | SYC Star & Bar Regatta |
| SYC Blake Island Race | SYC Grand Prix Regatta (prior year) |
| SYC/CYC NOOD Regatta | |

Other Events (1st, 2nd or 3rd in class)

- | | |
|------------------------------------|------------------------------------|
| SSSS South Sound Series and races: | WVYC Southern Straits |
| TYC Vashon Island | CYC PSSR |
| TTPYC Duwamish Head | RVicYC Swiftsure (S,CF,UCF,JF,UJF) |
| OYC Toliva Shoal | Whidbey Island Race Week |
| GHYC Islands | CBSA Cowichan Bay Regatta |
| CYC Center Sound Series and races | Van Isle 360 |
| CYC Blakely Rock | RVanYC/LYC Vic-Maui |
| CYC Scatchet Head | CYC PSSC |
| CYC Three Tree Point | OIYC Round the County |

Other Events (1st in class)

- | | |
|--------------------------------------|-----------------------------|
| STYC Iceberg | RVanYC Easter Seals Regatta |
| RVanYC VARC Opener | NYC SIN |
| STYC Blakely Rock Benefit | RIPS Canadian Race Week |
| RVicYC THRASH | AYC Northern Century |
| FCYC VARC Spring | BYC PITCH |
| SBYC/STYC Ballard Cup Series (I-III) | MBYC Maple Bay Regatta |
| STYC Race to the Straits | SBYC Trans-Puget |
| SISC Round Saltspring | CYCE Foulweather Bluff |
| AYC Windermere Cup | STYC Fall |
| Sail Northwest J-Fest | RVanYC VARC Closer |
| RVanYC WAVES | |

Prior Award Winners

2011	
Flash	Steve Travis
Voodoo Child	Brian Duchin
Tantivy	Stuart Burnell
Shoot the Moon	Don Wills II
Here & Now	Pat Denney
Arturo	Dan Westra
2010	
Flash	Steve Travis
Tachyon	Shaun Breese
Absolutely	Charlie Macaulay
Dos	Paul Faget
Trophy Wife	Glenn Klute
More Uff Da	Ben Braden
2009	
Banshee	Derek Campbell
Dos	Brad Butler
Declaration of Independence	Brian Watkins
Karma	Peter Shorett
Money Shot	Mike Schiltz
Here & Now	Pat Denney
Ladybug	Mark Brink

2008	
Braveheart	Charles Burnett III
Banshee	Derek Campbell
Declaration of Independence	Brian Watkins
Money Shot	Mike Schiltz
Gaucho	John Cahill
Three Ring Circus	Nate Creitz
Jude Stoller	Makika
Tikanga	Dalton Bergan
2007	
Makika	Jude Stoller
Braveheart	Charles Burnett
Ballistic	Gordy Cole
Declaration of Independence	Brian Watkins
Astral Plane	Adam Korbin
Grafix	Dave Martin
Money Shot	Mike Schiltz
Time Warp	Peter Nelson
Three Ring Circus	Nate Creitz

2006	
Makika	Jude Stoller
Coruba	Rob Fleming
Ballistic	Gordy Cole
Finale	Roger Hills
Sunday Ticket	Lance McDonough
Trophy Wife	Glenn Klute
Time Warp	Peter Nelson
Here & Now	Pat Denney
Three Ring Circus	Nate Creitz
2005	
Makika	Jude Stoller
Braveheart	Colin Booth
Storyville	Darrin Towe / John Hoag
Declaration of Independence	Brian Watkins
Corvo	Tom Kerr
Judo Chop	Herb Cole
Gauche	John Cahill
Percussive Maintenance	Hans Spiller
2004	
Coruba	Rob Fleming
Midsummer	Stig Osterberg
Gaia	Bob Riggle
Break'n Wind	Matt MacGregor
Gimpy	Charles Mottl
Eclipse	Brad Butler
Dragonfly	Pat McGarry
2003	
Coruba	Rob Fleming
Midsummer	Stig Osterberg
Declaration of Independence	Brian Watkins
Elixir	Mike Milburn
Isabeau	Carl Freund
Morphine	Brad Butler
Scooter	Mike Wright
2002	
Go Dog Go	Herb Cole
Elixir	Mike Milburn
Dangerous When Wet	Chris Winnard
Sibling Rivalry	Will Marken
2001	
Go Dog Go	Herb Cole
X-S	Colin Nichols
Morphine	Brad Butler
2000	
Elixir	Mike Milburn
Eclipse	Brad Butler
Coral Reefer	Dave Dupree
1999	
Paddywagon	Brian Huse
Ginny	Charles Mottel
Dragonfly	Patrick McGarry
1998	
China Cloud	Bill Buchan
Jubilee	Bill Burnett
Splash Tango 2	Stacey Wilson
Capella	Sherwood/Powley/Kubas
1998	
China Cloud	Bill Buchan
Jubilee	Bill Burnett
Splash Tango 2	Stacey Wilson
Capella	Sherwood/Powley/Kubas

1997	
China Cloud	Bill Buchan
Jubilee	Bill Burnett
Roxanne	Gordon Stoll
Kurrewa	Bob Henderson
Hail Merry	Trevor Hayward
Hanoman	Thomas Reese
1996	
Cassiopeia	Charles Burnett
Charisma	Roser/Robins
Showtime	Bob Mayfield
Fairwind	Putman/Joblonski
Francesca	James Miller
Alderbaran	Sherwood/Kubas
Bedford Lass	John Sterry
Hanoman	Thomas Reese
1995	
Cassiopeia	Charles Burnett
War Pig	Jeff Good
Aldebaran	Steve Kubas
Magic	Dave Schutte
1994	
Oaxaca	Gene Twiner
Aldebaran	Steve Kubas
Choices II	Dave Champion
Mustang Sally	Pryde/Schultz
1993	
Oaxaca	Gene Twiner
White Lies	James Marta
Elixir	Mike Milburn
Twinkle	Alex Kimball
White Squall	Roger Deitz
1992	
Oaxaca	Gene Twiner
Mustard Seed	Stacey Wilson
Sirius	Ken & Joanna Hays
Another Child	Lloyd Mathison
Rascal	Bill Watkins
1991	
Oaxaca	Gene Twiner
Schuss	Ed Webb
Wild Turkey	David Lynch
The Morgan	Ken & Sandy Robbins
Tiger Rag	Bill Headden
1990	
Jack Rabbit	Don Hebard
Starfire	Nelson/Benjamin
Impulse	Ken & Sandy Robbins
Mo Betta Two	Chuck Pepka
1989	
Snook	Erik Bentzen
Teddy Bear	Grey Hawken
Keladi	Ray Fiedler
Lady Bug	Alan Holt
1988	
Sachem	Bill Buchan
Gadzooks	Willis/Willhite
Rev	John Thompson
1987	
Bonnie	Badgley/Callaghan
Lucille	Stamper/ Stamper
Flamenco	Rocky Goodhope

SYC Deception Class Mini-12 Fleet

With twenty active boats and over 175 races every year, the Seattle Yacht Club Deception Class Mini-12 Fleet is the most active One Design fleet in the Pacific Northwest!

The Deception, built in Victoria B.C., is a 13' sloop designed by two Royal Victoria Yacht Club members to about one-fifth the scale of the 1980's America's Cup yachts. We have forty members as individual boat owners or in boat partnerships, which is a practical way to keep the costs down and get all the boats out for the regattas.

Every year we have seven series consisting of five regattas each. And with our friends at Royal Victoria Yacht Club and their ten boats, our two clubs alternate as host for an annual Inter-Club Team Race Regatta.

This year the Inter-Club Regatta will be sailed from the Center for Wooden Boats with teams from Royal Victoria Yacht Club and Royal Vancouver Yacht Club.



Mini-12's racing on Portage Bay

No regattas are held in August, when some members go on vacation or cruising. To accommodate our members who leave town for skiing or golfing, we score our Fleet Championship using the best five series. Each of our ownerships teams will organize about two regattas per year.

The Mini-12's rest upon yard trailers aboard two barges at the inshore end of Dock 3 at SYC. These barges are equipped with an electric hoist to make launch and recovery easy. Take a close look at the boats and picture getting out racing on Portage Bay as captain and crew! The Mini-12 fleet is a great place to get started in your sailing career and learn from many of the regions finest and most experienced sailors.

Contact Fleet Captain Stacey Wilson to come out for a sail.

Mini-12 Race Calendar

Date	Day	Time	Event	Committee
JANUARY				
8	Sunday	1:00	Winter Series, Regatta 5	USA 21
22	Sunday	1:00	Late Winter Series, Regatta 1	USA 1
29	Sunday	1:00	Late Winter Series, Regatta 2	USA 2
FEBRUARY				
5	Sunday	1:00	Late Winter Series, Regatta 3	USA 3
12	Sunday	1:00	Late Winter Series, Regatta 4	USA 4
26	Sunday	1:00	Late Winter Series, Regatta 5	USA 5
MARCH				
4	Sunday	1:00	Spring Series, Regatta 1	USA 6
11	Sunday	1:00	Spring Series, Regatta 2	USA 7
18	Sunday	1:00	Spring Series, Regatta 3	USA 8
25	Sunday	1:00	Spring Series, Regatta 4	USA 9
		3:00	Team Racing, Practice 1	
APRIL				
1	Sunday	1:00	Spring Series, Regatta 5	USA 10
		3:00	Team Racing, Practice 2	
3	Tuesday	6:00	Team Racing, Practice 3	USA 11
10	Tuesday	6:00	Team Racing, Practice 4	USA 16
14-15	Sat & Sun	All Day	Inter-Club Team Racing Regatta @ SYC	USA 15
17	Tuesday	6:00	Late Spring Series, Regatta 1	USA 13
24	Tuesday	6:00	Late Spring Series, Regatta 2	USA 14
MAY				
1	Tuesday	6:00	Late Spring Series, Regatta 3	USA 17
3	Thursday	2:00	Canadian Exchange Regatta	TBA
5	Saturday	Noon	Opening Day	
8	Tuesday	6:00	Late Spring Series, Regatta 4	USA 18
15	Tuesday	6:00	Late Spring Series, Regatta 5	USA 19
19-20	Sat & Sun	All Day	NOOD Regatta, LK Union	TBA
22	Tuesday	6:00	Summer Series, Regatta 1	USA 20
JUNE				
5	Tuesday	6:00	Summer Series, Regatta 2	USA 21
12	Tuesday	6:00	Summer Series, Regatta 3	USA 1
19	Tuesday	6:00	Summer Series, Regatta 4	USA 2
26	Tuesday	6:00	Summer Series, Regatta 5	USA 3
JULY				
No Racing Scheduled				
AUGUST				
No Racing Scheduled				
SEPTEMBER				
9	Sunday	3:00	Fall Series, Regatta 1	USA 4
16	Sunday	3:00	Fall Series, Regatta 2	USA 5
23	Sunday	3:00	Fall Series, Regatta 3	USA 6
30	Sunday	3:00	Fall Series, Regatta 4	USA 7
OCTOBER				
7	Sunday	3:00	Fall Series, Regatta 5	USA 8
		5:00	Annual Fleet Owners Meeting	

SYC Sailboat Cruising Program

Cruising events are for members of Seattle Yacht Club, except as noted.

- Overview of Sailboat Cruising Events
- Winter and Spring Power/Sail Mini Cruises
- Leukemia Cup
- Cruise & Snooze
- NORPAC

Overview of Sailboat Cruising Events

Winter and Spring Power/Sail Mini Cruises

These early-season cruises are open to all SYC boaters, power and sail. Each cruise starts off Shilshole on a Saturday and goes to a nearby destination. They're a terrific way to get a jump on the season and enjoy time on the water with your friends.

Leukemia Cup

Seattle Yacht Club is a proud participant in the annual Leukemia Cup Regatta to benefit the Leukemia and Lymphoma Society with a casual race in Elliott Bay and tropical themed auction party. This event is open to everyone. We typically raise over \$125,000 in the name of the Seattle area boating and sailing community. Come take part in doing something fun and good with our sport and join the 80 or so boats and 300 people at the auction party at Elliott Bay Marina to enjoy the food and drink, the band, the games, and the good company!

Cruise & Snoozes

This time-honored cruising event is ideal for families. With a reverse start and non-flying sails, everyone is guaranteed to have a great time and the racing is optional. Come and enjoy the company of your SYC sailing friends at a casual event.

NORPAC

NorPac is a fun, cruiser-style regatta held biennially in Vancouver Island's beautiful Barkley Sound in mid-July. All are welcome, including non-SYC boats, but space is limited to 30 boats! We especially welcome those who want an introduction to the wild side of Vancouver Island along with the comfort of a congenial group of sailors.

Winter and Spring Power/Sail Mini Cruises

OK boaters here is the POWER/SAIL Mini Cruise schedule. AI's are encouraged to attend; kids welcome. If there are small craft warnings, the event is cancelled. This is classified semi-official non-event event which means there is no charge for TONS of fun and adventure.

Always bring a Greenbox; usually starts around 1730. Dinner is potluck or at a local restaurant as below.

Registration Deadline: For information or to sign up, e-mail or phone Chris Warner as noted below, by 1600 on the Friday before each cruise.

Chairpersons: Fred Pot, 206-850-7664, fpot@comast.net

<u>Date</u>	<u>Destination</u>	<u>Dinner</u>
January 7-8	Port Madison	Potluck dinner
January 28-29	Eagle Harbor	Dinner at the pub
March 3-4	Gig Harbor	Potluck dinner
April 21-22	Bremerton	Potluck or Anthony's
May 26-27	Poulsbo	Dinner at Italian restaurant
July 3	Liberty Bay	Anchor raft-up w/potluck dinner



Sharing race committee know-how at the Star & Bar Regatta

Leukemia Cup Regatta

Let's do something good with our great sport!

Seattle Yacht Club is a proud participant of the annual Leukemia Cup Regatta to benefit the Leukemia and Lymphoma Society. There are plenty of worthy causes and many top tier charities. In this case, the boating community is lucky to have been working with one of these first class organizations for many years: the Leukemia and Lymphoma Society. Whether or not it's our particular personal cause, the point is to pick one for our community. With our focus on this charity, they've helped us do something good with our great sport, to make a compassionate expression from our community that fits with our style and is big enough to be noticeable and widely appreciated.

Last year we had over 80 boats and raised over \$125,000 in the name of the Pacific Northwest boating community. The auction party at Elliott Bay Marina had over 300 people who enjoyed the food, the rum, the band, and the games. Our efforts over the last eighteen years, here and across the country, have raised over thirty-eight million dollars and over \$800,000 from our efforts here in Seattle in just the last five years.

Boat owners and crew can participate in many ways, including just by registering and showing up for the casual format sailboat regatta and/or the auction party that evening. By participating, you make the event bigger and more attractive to corporate sponsors (sailing has a very marketable image) and you also help us reach more potential fundraisers, donors, and volunteers. We're also looking for power boaters to help develop a spectator fleet and corporate outing offering for sponsors.

If participants are interested, we'll attempt to match them with patients to possibly bring as guests on the water, if the patients are able, for a much appreciated get away. Skipper and crew will feel like they did something good just by sharing what they're already doing.

Date: June 9, 2012 (Saturday)

Location and Schedule (all at Elliott Bay Marina):

Registration	1000 – 1300 (SYC Elliott Bay Marina Station)
Skipper's Meeting	1245 (SYC Elliott Bay Marina Station)
Regatta	1400 - 1700
Party	1700 - 2130

Elliott Bay Marina has offered free guest moorage, based on availability, for Friday and Saturday nights. At our request, boats will likely be assigned to raft on the east side of easternmost pier, dock N. Please contact the marina for availability and assignment at 206-285-4817 or VHF 78A.

Course: Two laps in Elliott Bay.

Classes to Race: Everyone is welcome to race or cruise.

Registration Donation: \$150 to the Leukemia and Lymphoma Society (includes two party tickets). Additional party tickets \$25.

Registration: Please register with the Leukemia and Lymphoma Society online at www.leukemicup.org/wa.

SYC Contact: Brian Watkins, 206-276-1445, brian.watkins.sail@live.com

Notice of Race

SYC Cruise & Snooze

Power boaters encouraged to attend

This is a great event. Sail over to Port Madison, spend the night, and sail back the next day. No flying sails. Pursuit format starts so fewer boats start together. Super green box. Potluck dinner with more than enough to eat. Kids welcome.

Date:

Races A/B (Saturday/Sunday): June 23-24, 2012
Races C/D (Saturday/Sunday): September 8-9, 2012

Location: Puget Sound in the vicinity of Shilshole Bay. The start will be off Shilshole on Saturday and off Point Monroe on Sunday.

Course: The courses will be cruiser/racer and announced prior to racing.

Time of First Warning:

Races A and C (Saturdays): 1100
Races B and D (Sundays): 1200

Time Limit: 1700 each day

Classes to Race: Sailboats! Though helpful, you do not need a PHRF-NW rating to race. Performance handicaps will be assigned for this event as necessary.

Other Provisions:

- Notice of Race amended by the SYC General Notice of Race.
- No spinnakers or other flying sails may be used. Only one working sail may be flown on its stay at any time, except during sail changes.
- All races will be pursuit format with handicaps applied at the start.
- SYC members only event.

Awards: Special awards will be made at the conclusion of each Saturday race. Recipients will be selected by the chairpersons. The Cruise & Snooze Cannon Trophy will be awarded to the series overall winner.

Social Activities: Greenbox at 1700 on Saturday after racing. Dinner will follow at 1830. Main course is provided. When you sign up to attend, please let the front desk know whether you will bring a main dish, salad, or dessert for twelve people. A logger's breakfast will be served at 0800 on Sunday morning.

Registration Deadline:

Races A/B (Saturday/Sunday): June 21, 2012 (Thursday)
Races C/D (Saturday/Sunday): September 6, 2012 (Thursday)

Registration Fee: \$50 for A/B, \$50 for C/D. The fee provides for two adults per boat and \$15 extra for each additional adult on board to help pay for food. No charge for kids.

Chairpersons: Brian Ferris (A/B)
Michael Hendrick (C/D)

NorPac Regatta

Barkley Sound, British Columbia

NorPac is a fun, cruiser-style regatta held biennially in Vancouver Island's beautiful Barkley Sound. All are welcome, but space is limited to 30 boats! We especially welcome those who want an introduction to the wild side of Vancouver Island along with the comfort of a congenial group of sailors.

The fleet assembles Sunday afternoon at the Port Alberni Yacht Club station in Robbers Passage for our first night in Barkley Sound. Pre-race meeting will be held during the Greenbox Sunday evening. The sailing fleet will then race once per day, except Wednesday, using navigational marks and natural obstructions within the Sound. Racing is done cruiser-style, with no flying sails. Finally, on Friday we will dock at the marina in Ucluelet for an awards banquet at Black Rock Resort followed by optional extension activities in Ucluelet and Clayoquot Sound.

Cruise itinerary:

Saturday	Gather in Sooke, fleet departs early Sunday (optional)
Sunday	Greenbox at Port Alberni YC Robbers Passage Outstation
Monday	Race #1 to Pinkerton Islands
Tuesday	Race #2 to Eagle Nook Lodge
Wednesday	Lay day, potluck dinner
Thursday	Race #3 to Effingham Island
Friday	Race #4 to Ucluelet and Awards Banquet at Black Rock Resort

This year we have identified opportunities for visiting the ocean beaches and other shore side activities in the Ucluelet area. After all, once you have cruised to Barkley it makes sense to stay another week and see Clayoquot Sound, Flores Island, Hot Springs Cove and Tofino. If you are interested, we have prepared a great handout about these activities. A possible "follow-on" cruise to Clayoquot Sound, just a short hop further up the coast of Vancouver Island, will continue the fun.

Dates:

NorPac Regatta: July 15 to July 20 (Sunday to Friday)

Skookum Cruise: July 26 to August 4 (Thursday to Saturday)

Awards: Daily class prizes will be awarded each evening. Overall series trophies are announced during the awards dinner at Ucluelet on Friday evening.

Registration: Please register by June 15 at the front desk at SYC. This event is open to members of any yacht club and is limited to 30 boats racing under PHRF-NW rules without flying sails. Register early so we can help set up group travel plans.

Chairpersons: Taylor Clark, 425-443-7408, taylor@realfolks.org
Lee Rogge, 206-524-2975

SYC Sailing School and Junior Race Team

The Sailing School and Junior Race Team offer small boat sailing for members and guests of all ages with an emphasis on junior sailing development.

Summer Sailing School

The Seattle Yacht Club has a long-standing tradition of providing an outstanding Junior Sailing School program for children in the Seattle area. We offer classes for children from 7-17 years of age with a wide variety of class options. Over 500 young sailors participate in a total of 39 classes over a ten week period each summer. The instructional staff is trained through US SAILING, and CPR and First Aid certified.

This year's program will run from June 18 through August 31, 2012. Classes run from 9:00 am - 4:00 pm Monday through Friday. Students can sign up for a week at a time.



Opti sailing in Portage Bay

Member Registration. Members will be able to register from March 12th-14th via fax, mail, or in person. After the 14th, the policy will be first-come, first-served whether member or non-member. We ask that you use your SYC membership number for billing purposes. Member prices include members' children, grandchildren, and junior members.

Non-member Registration. Guest registration will begin on Thursday, March 15th from 8:30 a.m. - 6:00 p.m. at the south entrance to the Seattle Yacht Club Portage Bay clubhouse in the Sailing Office. Class availability will be on a first come, first-served basis. After March 15th, registrations will be accepted via mail or fax.

Junior Race Team

The SYC Race Team invites aspiring young sailors to join in the fun, support, friendships, and camaraderie that develop from being a part of a nationally competitive sailing team. SYC Race Team sailors can take part in 75 scheduled practices and enjoy support from our coaching crew at seven regional regattas. Advanced sailors compete in both national and international events, and over the years, the SYC program has helped in the development of many Olympic class sailors as well.

Northwest Youth Race Circuit Schedule

April 28-29	RVYC Kitten Cup Regatta, Vancouver, BC Contact: James McDonald (sail_dir@royalvan.com)
June 23-24	VLSC Vancouver Lake Regatta, Vancouver, Washington Contact: Dave Cannard (dave@netequality.org)
July 14-15	CGRA WIND Youth Regatta, Cascade Locks, Oregon Contact: Jarvis Brecker (jarvis@cgra.org)
July 28-29	CGRA Opti Gorge Regatta, Cascade Locks, Oregon Contact: Jarvis Brecker (jarvis@cgra.org)
Aug 25-26	SYC Northwest Junior Olympics, Seattle, Washington (Shilshole Bay Marina) Contact: Brian Ledbetter (brianl@seattleyachtclub.org)
Sept 8-9	Jonny Adams Memorial Regatta, Port Madison, Washington Contact: Stephanie Ahlquist (stephofcourse@aol.com)
Sept 29-30	CYC/SSP Octoberfest, Seattle, Washington (Sand Point) Contact: Morgan Collins (morgan@sailsandpoint.org)

Tuesday Night (Family Night) Race Series

Members of the Race Team, club members, and their guests are welcome to sail Tuesday evenings in Portage Bay on Vanguard 15's, Lasers, Optimists, and 420's. This is a great place for those new to racing to gain confidence, time on the water, and transition to Race Team sailing. Younger sailors are encouraged to pair up with parents, or older Race Team members!! Sailing runs Tuesdays, June 19 to August 28, 5:00 PM to 7:00 PM. Sailing, games on the lawn, and taco bar for 9 bucks.

High School Sailing at SYC

To help promote High School Sailing in Seattle and create a place for graduates of our sailing school to begin participating in the sport, we are now offering a membership to the SYC Race Team for the High School season.



Vanguard 15: multi-purpose, double-handed one design (fun too)

This program is open to all kids from 7th- 12th grade and does not require your school to form a team. We will mix and match sailors from all schools. Opti sailors are welcome to practice, but might not meet the grade requirement to race. This year we are providing practices at SYC twice a week during the spring season from March till late May. This will also include coaching at many local events (check www.nwisa.org for the most up-to-date schedule).

Opti Green Fleet Program

Interested in taking the first step to becoming a racer? The Opti Green Fleet is the best place to start for kids ages 8-13. The group meets each summer on Wednesday evenings from 5:00 to 7:30 at SYC on Portage Bay. Using our club boats, you will learn the basics of racing, advanced rigging, and boat handling. A coach will also be on hand at three local regattas. Once you feel ready to head out to Shilshole and sail with the regular Opti Team, your fee can be forwarded toward the regular Race Team annual fee.

Adult Sailing Courses

Seattle Yacht Club's adult sailing sessions offer an excellent way to get out on the water and learn the basics of small boat sailing. Using the club's Vanguard-15's, 420's, and Lasers, the classes start with the basics including rigging, points of sail, sail trim, boat-handling, and boating safety. Students develop their skills through on-the-water sessions, "chalk talk" discussions, and work in textbooks. Classes are open to all levels, and advanced sessions are offered for more experienced sailors ready to learn racing tactics.

Private Sailing Lessons

Enjoy the individual attention and customized instruction of private lessons at Seattle Yacht Club. Whether you're looking to learn from scratch, refresh your

basic sailing skills, or learn more advanced techniques, private lessons provide the opportunity to learn what you want when you want.



Double-handed 420 in Shilshole Bay

The Small Boat Fleet at SYC

SYC is committed to our program to grow boating with the acquisition and maintenance of our small boat fleet and support boats, including twenty Lasers, twenty-nine Optimists, one 29er, twelve Vanguard 15's, eight 420's, five Avon inflatables, six Boston Whalers, one Grady White, and the 40' m/v *Portage Bay* trawler.

The **Optimist** is an eight foot, kid-sized single-handed dinghy that is easy to manage and fun to sail. The "Opti" is a great boat for juniors to begin sailing, and advance to racing easily.

The **Vanguard-15** is the primary training boat at SYC. This stable, double-handed boat with a main and jib is the national standard for novice and advanced sailors to master the basics and to develop teamwork.

The Olympic-Class **Laser** is a high performance single-handed dinghy for intermediate and advanced sailors. It is a great platform to build boat-handling and racing skills. This boat has two different size sails, allowing us to tailor the boat to the weight of the sailor.

The **420** is an ideal entry-level training boat for all ages. This is a double-handed boat with main and jib. Advanced sailors can rig the spinnaker and trapeze for an exhilarating thrill.

Sailing Office Contact Information

The Sailing Office is located at the SYC main clubhouse on the bottom floor near the south entrance. Please contact the Sailing Office personnel for any questions or information.

Brian Ledbetter, Sailing Director

brianl@seattleyachtclub.org

Angela Leffingwell, Sailing Programs Coordinator

angela@seattleyachtclub.org

Cameron Hoard, Race Team Coach

choard@gmail.com

Sydney DelaCruz, Race Team Assistant Coach

palma6@hotmail.com

Phone: 206-926-1011

Fax: 206-324-8784



The Olympic class Laser, Laser Radial, and Laser 4.7

Awards and Recognition

Thank you and congratulations to everyone who volunteered and competed.

Junior Sailing Awards

<u>Trophy</u>	<u>Event</u>	<u>Recipient</u>
Bill Burdick Trophy	Junior Sailor of the Year	Jack Toland
Ernest Gann Award	Outstanding Jr. Instructor	Burgess Malarkey
Captain Lovejoy Trophy	Most Improved Sailor	Hanne Weaver
Joe Duthie Trophy	Top Girl- Club Championship Regatta	Kate Shaner
Stimson Trophy	Top Boy – Club Championship Regatta	Charlie Fratt
Brent Nichols Trophy	Outstanding Sportsmanship / Inspirational Sailor	Talia Toland

Outstanding Achievement in Sailing

<u>Trophy</u>	<u>Event</u>	<u>Recipient</u>
Outstanding Cruising Family Trophy	Cruising Sailboat of the Year	<i>Evolo</i> , Brian, Karen & Betty Ferris
Ruptured Eardrum Trophy	Outstanding Race Committee Member	Pat Crockett
Bob Gibbons Trophy	One-Design Sailor of the Year	Allan Van Ness
Lake Union Sailing Trophy	Outstanding Crew Member	Matt Pistay
Golden Potlatch Trophy	Outstanding Cruiser/Racer	<i>Strider</i> , Keith Johnson
Kelly O'Neil Henson Trophy	Best SYC Swiftsure	<i>Lunch Box</i> , Josh Larson
Bates McKee Memorial Trophy	Sailboat of the Year	<i>Shoot the Moon</i> , Andrew Wills
Marymont Trophy	Sailor of the Year	Derick Vranizan
Perpetual Sailboat Trophy	William W. Heylman Memorial Award	Brian Ledbetter

Sailing Performance Awards

Tri-Island Series

Protection Island Race

Jerry Bryant Trophy (Long)	Don Wills II	<i>Shoot the Moon</i>
Old Salt Trophy (Short)	Paul Faget	<i>Dos</i>
Lady Medina (C/R)	Paul Walchenbach	<i>Mata Hari</i>

Vashon Island Race

Salt Chuck Trophy (L)	Jim Marta	<i>Eye Candy</i>
Rawson Trophy (S)	Charles Hill	<i>Different Drummer</i>
Cruiser/Racer (C/R)	Bill Boyeson	<i>Jiminy</i>

Blake Island Race

Blake Island Trophy (L)	Gary Morgan / Chris Yob	<i>What a Tripp</i>
Blake Island-Short (S)	Gay Morris / Curt Brady	<i>Xcentric</i>
Gamwell Trophy (C/R)	Mike Milburn	<i>Starbird</i>

Tri Island Series Overall

Walt Little Trophy (L)	Don Wills II	<i>Shoot the Moon</i>
First President's Trophy (S)	Gay Morris / Curt Brady	<i>Xcentric</i>
Tri-Island Cannon (C/R)	Bill Boyeson	<i>Jiminy</i>

Mark Mayer

Mark Mayer Bowl	Bill Elmer	<i>Anomaly</i>
Mark Mayer Trophy	Dan Krier	<i>Bullet</i>
Cruiser/Racer	Peter May	<i>Yankee III</i>

NOOD Regatta

J/109	Stuart Burnell	<i>Tantivy</i>
J/105	Lorenzo Migliorini	<i>Allegro Vivace</i>
J/80	Chris White	<i>Crazy Ivan</i>
Performance 30	Laney Gale	<i>Blue Martini</i>
J/24	Harry Dursch	<i>Self Abuse</i>
Thunderbird	Duane Emnott	<i>Thunderbaby</i>
Melges 24	Herb Cole	<i>Midsummer</i>
San Juan 21 (NFS)	Mary McCollum	<i>Yellow Jacket</i>
San Juan 21	Marc VanderSchalie	<i>Kermit</i>
San Juan 24	Kenneth Johnson	<i>Grauer Geist</i>
Sport Boat	Mark Dobie	<i>Zipper</i>
Formula 18	Brian Hunt	<i>Team Storm</i>
29er / Open Skiff	Chris Maas	<i>Angel of Attack</i>
29erXX	Jen Morgan Glass	<i>Rio '16</i>

505	Carol Buchan	<i>Yellow Jacket</i>
Laser	Joe Burcar	<i>196836</i>
A-Cat	Ken Marshack	<i>USA 192</i>
Snipe	Kirk Smith	<i>MindRacer</i>
Vanguard 15	Dalton Bergan	<i>SYC 11</i>
Weta	David Berntsen	<i>583</i>

Laser Pacific Coast Championship

Laser	Elliot Drake	U of O
Laser 4.7	Jack Toland	SYC
Laser Radial	Natalia Montemayor	RVanYC

Commodore's Cruise

Keith Johnson	<i>Strider</i>
---------------	----------------

Whidbey Island Race Week

Xzora Trophy	John Hoag	<i>Shrek</i>
--------------	-----------	--------------

Northwest Jr. Olympics

29er	Jack Toland	SYC
Laser	Teddy Weaver	SYC
Laser Radial	Hanne Weaver	SYC
Optimist	Nicolas Martin	CYC
Bic	Kara Ashpole	GHYC
FJ	Louise Currie	SSP
Vanguard 15	Senai Doss	TYC

SYC Jack & Jill

PHRF	Kathryn Meyer / Bill Blodgett	<i>More Cowbell</i>
------	----------------------------------	---------------------

Cruise & Snooze

Class 1	Jim Marta	<i>Eye Candy</i>
Class 2	Mike Milburn	<i>Starbird</i>
Class 3	Paul Walchenbach	<i>Mata Hari</i>
Overall	Jim Marta	<i>Eye Candy</i>

Star & Bar

PHRF 1	Greg Slyngstad	<i>Wasabi</i>
--------	----------------	---------------

PHRF 2
PHRF 3
J/105
PHRF 5

Glenn Klute
Graeme Esarey
Erik Kristen
Laney Gale

Trophy Wife
Kotuku
Jubilee
Blue Martini

Grand Prix

Cadranell Trophy
Robert. H. Perry Trophy
Charles Ross Trophy
Griffiths Trophy
Kennell Windpennant
Centennial Trophy

Steve Travis
Brian Duchin
Stuart Burnell
Don Wills II
Pat Denney
Dan Westra

Flash
Voodoo Child
Tantivy
Shoot the Moon
Here & Now
Arturo

Mini-12 Awards

Fleet Championship

Stacey Wilson

Three Stooges



Another fine day of sailing at the Grand Prix Regatta

Appendix

In this section:

- Sailboat Leadership Team
- Sailboat Program Contacts
- Puget Sound Sailboat Safety Regulations
- Mark Descriptions
- Buoy Course Marks Diagram
- Puget Sound Marks Diagram

Sailing Program Leadership Team

Commodore	Chuck Lowry
Vice Commodore	Rob Rothe
Rear Commodore	Chris Warner
Fleet Captain Sail	Brian Watkins
Cruising Activities Chairman	Fred Pot
Junior Commodore	Ryan Green
Junior Vice Commodore	Danielle Erjavec
Junior Rear Commodore	Sheridan Ferguson
Junior Secretary	Stephanie Forbis
Junior Advisor	Carol Clemett
Race Committee (as of prior year)	Roman Budzianowski, Phil Calvert, Iain Christenson, Pat Crockett, Bill Elmer, Dave Ferguson, Brian Ferris, Don Glockner, Rhonda Halfman, Denny Johnson, Keith Johnson, Dan Krier, Brian Ledbetter, Angela Leffingwell, Sarah Mars, Jim Medley, Mike Milburn, Chris Otorowski, Roger Pawley, Lyn Pawley, Warren Pawley, Charlie Pelly, Marda Phelps, Brian Pistay, Fred Pot, Barbara Reid, Karole Sherlock, Mike Sherlock, Seth Siegal, Gordon Stoll, Paul Thorlakson, Paul Walchenbach, Chris Warner, Curt Warner, Brian Watkins, Tom Weingarten, Carin Weinrich, Stacey Wilson
Sailing Director	Brian Ledbetter

Sailing Program Contacts

Fleet Captain Sail	Brian Watkins	brian.watkins.sail@live.com 206-276-1445
Cruising Activities Chair	Fred Pot	fpot@comcast.net 206-850-7664
Director Racing Operations	Karole Sherlock	karolesherlock@gmail.com 425-941-4617
Protest Committee Chair	Jim Medley	jim.medley@comcast.net 206-361-0513
PHRF-NW Handicapper	Mike Milburn	milburn69802@msn.com 206-780-2525
Mini 12 Fleet Chair	Stacey Wilson	wwisail2@msn.com 206-553-9941
T-37 Fleet Chair	Allan Van Ness	van.ness444@gmail.com 206-920-2854
Sailboat Dinner Programs	Fred Pot	fpot@comcast.net 206-850-7664
SYC Sailing Director	Brian Ledbetter	brianl@seattleyachtclub.org 206-325-1000

See Notices of Race for individual event chairpersons.



Madrona rounding Point Robinson in the Vashon Island Race

Puget Sound Sailboat Safety Regulations

2002 Revision as adopted by the Shilshole Bay, Sloop Tavern, Corinthian of Seattle, and Seattle Yacht Clubs

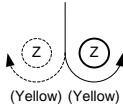
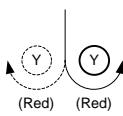
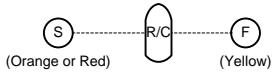
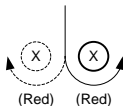
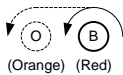
We must share Puget Sound with its commercial traffic, including many deep-water vessels and tows. It is sobering to note that, if your boat is one mile dead-ahead of a freighter coming down the Sound at normal speed, and the freighter's helm is put hard over to avoid you, the freighter's bow will miss you, but her stern will not! Obviously, this implies that early and decisive action is required to keep your boat out of the path of a large oncoming vessel or tow.

1. Yachts must not sail across a tow line, too close ahead, or too close alongside of commercial traffic. Deep water vessels have limited ability to change course and speed. Barges under tow can yaw unexpectedly well out to the side at speeds essentially the same as they are being towed. Yachts should not pass less than one mile ahead and 1/4 mile to the side of large vessels.
2. Rule 10 of the International and Inland Rules to Prevent Collisions at Sea (COLREGS) requires that no power-driven vessel less than 20 meters (66 feet) in length, and no sailing vessel (of any size) may impede the safe passage of a power-driven vessel following a Vessel Traffic System (VTS) Lane.
3. Rule 9 of the COLREGS requires that no power vessel of less than 20 meters (66 feet) in length and no sailing vessel (of any length) shall impede the safe passage of any vessel which can navigate only within a narrow channel or fairway. Puget Sound can be considered a "narrow channel" for most large commercial traffic. "Impede" means to cause to alter speed or course or to take evasive action.
4. A yacht in position where it may impede commercial traffic must exit from the "danger area" immediately, under auxiliary power if necessary. If power is used, it must be reported to the Race Committee at the finish line. Also, a written report must be made on a protest form, showing the location, time, duration of power use, speed, direction of exit, and that the competitive position of the yacht was not improved. If the last item cannot be demonstrated adequately, a time penalty may be imposed.
5. Radar reflectors must be flown at all times when racing. They must meet IMO recommendations (i.e., of metal plates of sufficient rigidity to maintain a 90 degree angle), be not less than 12 1/2 inches in diameter, and be installed not less than 4 meters (13 ft.) above the water. See PIYA Special Regulations paragraph 3.8.
6. Navigation lights must be shown between sunset and sunrise as required by the International Rules of the Road.
7. Observed and/or reported violations of the safety regulations may be protested. The Race Committee shall have the option of issuing a "warning" when deemed appropriate. Warnings are recorded and may be considered when judging any future reports.

Buoy Course Marks (position relative to R/C)

Please note that the Sailing Instructions for a particular race may use modified or different mark descriptions than described here.

Intended
Wind
Direction
↓



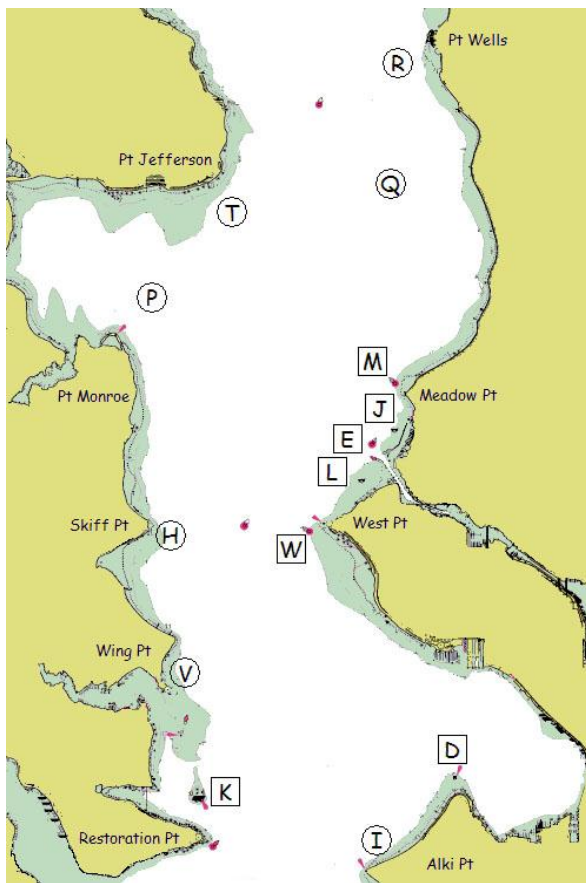
Key	
	Typically starting mark, may be rounding or finishing mark
	Weather rounding mark
	When signaled after a weather mark, offset rounding mark near that weather mark
	Gybe rounding mark
	Leeward rounding mark, may be port gate if starboard gate mark present
	If present, leeward rounding mark starboard gate
	Typically finishing mark, may be rounding or starting mark
(Color)	Mark color shown under mark on diagram
	Race committee signal boat in position as a mark
	Typical rounding direction
	Rounding course with optional weather offset mark
	Alternative rounding course with optional leeward gate mark

The course diagram for buoy course marks shows the general orientation of the race committee signal boat ("R/C"), other marks (identified by the letters S, A, B, C, O, G, X, Y, Z and F), and the intended wind direction. All marks other than the race committee signal boat are inflatable buoys. Positions are approximate and the diagram is not to scale.

Notes:

S When a starting mark for a downwind start, may be on either side of the race committee signal boat.

Geographic Marks (position based on location)



Bearings are magnetic. Distances are nautical miles (NM). Bearings, distances, and positions are approximate. Each temporary mark is shown with its label in a circle. Each permanent mark is near its label in a square box.

- D Duwamish Head Lt. (LL #16910)
- E Shilshole Bay Approach Buoy (LL #16785)
- H Temporary mark 0.3 NM E of Skiff Pt.
- I Temporary mark 0.5 NM N of Alki Pt.
- J Shilshole Bay N Mooring Buoy 0.25 NM SSW of N entrance
- K Blakely Rock (LL #16830)
- L Shilshole Bay S Mooring Buoy 0.5 NM SW of S entrance
- M Meadow Pt. Buoy (LL #16765)
- P Temporary mark 0.75 NM NNE of Pt. Monroe
- Q Temporary mark 3.0 NM bearing 340° from Meadow Pt. Buoy
- R Temporary mark 0.5 NM SW of Pt. Wells
- T Temporary mark 0.5 NM SE of Pt. Jefferson
- V Temporary mark 0.3 NM NNE of Wing Pt.
- W West Pt. Buoy (LL #16805)

**Please thank these prime sponsors
for supporting sailing**



Fisheries Supply

Marine Supplies Since 1928



www.seattleyachtclub.org