



Seattle Yacht Club

Established in 1892

SAILBOAT RACE BOOK

2011





Eye Candy – SYC 2010 Sailboat of the Year

Seattle Yacht Club Sailboat Race Book 2011

1807 East Hamlin Street
Seattle, Washington 98112

www.seattleyachtclub.org

SYC Front Desk	206.325.1000
Sailing Office	206.926.1011
Sailing Office Fax	206.324.8784

Table of Contents

Greetings from the Fleet Captain Sail.....	1
Sailboat Activity Calendar.....	2
Race Registration Procedure.....	3
Registration Checklist.....	4
SYC Sailboat Racing Program	5
Overview of Sailboat Racing Events.....	5
SYC General Notice of Race.....	7
Notice of Race SYC Tri-Island Protection Island Race.....	10
Notice of Race SYC Mark Mayer Regatta	11
Notice of Race SYC Tri-Island Vashon Island Race.....	12
Race Information Sperry Top-Sider NOOD Regatta.....	13
Notice of Race SYC Tri-Island Blake Island Race.....	14
Notice of Race SYC Jack & Jill Race	16
Notice of Race SYC Star & Bar Regatta.....	17
Race Information SYC Grand Prix Invitational Regatta	18
SYC Deception Class Mini-12 Fleet.....	21
SYC Sailboat Cruising Program	23
Overview of Sailboat Cruising Events	23
Winter and Spring Power/Sail Mini Cruises	24
Leukemia Cup Regatta.....	25
Notice of Race SYC Cruise & Snooze	26
Commodore's Cruise San Juan and Gulf Islands	27
Sunshine Coast Cruise British Columbia	27
Notice of Race SYC Fall Equinox Regatta	28
SYC Sailing School and Junior Race Team.....	29
Summer Sailing School.....	29
Junior Race Team.....	30
Tuesday Night (Family Night) Race Series.....	30
High School Sailing at SYC.....	31
Opti Green Fleet Program	31
Adult Sailing Courses	31
Private Sailing Lessons	32
The Small Boat Fleet at SYC	32
Sailing Office Contact Information	33
Awards and Recognition	35
Junior Sailing Awards	35
Outstanding Achievement in Sailing.....	35
Sailing Performance Awards.....	36
Appendix	39
Sailing Program Leadership Team (October – September).....	39
Sailing Program Contacts.....	40
Puget Sound Sailboat Safety Regulations	41
Mark Descriptions.....	42
Buoy Course Marks Diagram.....	43
Puget Sound Marks Diagram	44

Greetings from the Fleet Captain Sail

Welcome to SYC Sailing Activities for 2011. This year we continue our traditional array of racing and cruising events and add a couple of new ones.

The cruising events will be under the leadership of Chris Warner, Cruising Activities Chair. Events start in January with the first mini cruise to Port Madison. There are five such cruises (no racing) for those who simply like to be on the water with friends. However, if you prefer your boating after the weather gets a little warmer, you will not want to miss the weekend Cruise 'n' Snoozes and the Fall Equinox Regatta. For more extended cruising and adventure, the Commodore Cruise and Sunshine Coast Cruise are an excellent way to get yourself north in late July and early August. Sailboat Dinners with featured speakers are scheduled for the second Thursday every month. These are a great place to meet other SYC sailors too.

Brian Watkins returns as Racing Activities Chair for 2011. Distance racers will want to participate in the Tri-Island Series and buoy racers will want to put both the NOOD Regatta and the Star & Bar Regatta on their calendars. Remember, too, that the Mini-12 Fleet races on Sundays in the winter, and evenings in the summer. For the more laid back racer we still offer the Cruiser/Racer (C/R) class for family-oriented boats that are less competitive for PHRF racing, but whose owners and crews would like to test their skills with other similar, displacement-oriented boats. C/R class handicaps include adjustments in many areas, i.e., less-than-optimal sails, roller furling equipment, bottom condition.

I am pleased to report that our focus on a strong sailing community has resulted in some new offerings. Among them is model boat sailing, which has doubled in participation and attracted national events to the area, and kiteboarding regattas on Lake Washington. In the small keelboat arena, years of effort by our members on the viability of a fleet for match and team racing have culminated in the formation of a separate non-profit called the Northwest Amateur Sailing and Racing Association. NASRA is working with local supporters to build a fleet of matched J/22's to be moored at Elliott Bay Marina. This fleet will be used as a platform to promote and grow awareness of sailing and racing with the goal of reaching out to more people to join the boating community. We are excited to work with NASRA to attract national and international events and interclub competitions.

Our Race Committee, headed by Roger Pawley, will continue working with other clubs in an effort to educate Race Committee members and interested sailors in some of the finer points of race administration. If you have ever wondered about what happens on the upper deck of Portage Bay, please join us.

The Sailboat Committee Meetings are at 7 P.M. on the first Thursday of each month (except May, July, and August). Whatever your interest in sailing, we want you to be a part of it. The old adage applies that the more you put in the more you get out and there's plenty of fun to go around. I'll see you out there.

Dave Ferguson
Fleet Captain, Sail

Sailboat Activity Calendar

JANUARY

- 6 Sailboat Business Meeting
- 13 Sailboat Dinner
- 22-23 Mini-Cruise – Eagle Harbor

FEBRUARY

- 3 Sailboat Business Meeting
- 10 Sailboat Dinner

MARCH

- 3 Sailboat Business Meeting
- 5 High School Kick Off Regatta
- 10 Sailboat Dinner
- 19-20 Mini-Cruise – Gig Harbor

APRIL

- 7 Sailboat Business Meeting
- 14 Sailboat Dinner
- 23-24 Mini-Cruise – Bremerton
- 30 Protection Island Race

MAY

- 7 Opening Day
- 8 Mark Mayer Race
- 12 Sailboat Business Meeting
- 14 Vashon Island Race
- 20-22 NOOD Regatta
- 28-29 Mini-Cruise – Poulsbo

JUNE

- 2 Sailboat Business Meeting
- 3-5 Laser Pacific Coast Champs
- 4 Blake Island Race
- 11 Leukemia Cup
- 25-26 Cruise & Snooze A/B

JULY

- 24-29 Commodore's Cruise
- 30-8/5 Sunshine Coast Cruise

AUGUST

- 20-21 Junior Olympics
- 27 SYC Jack & Jill Race

SEPTEMBER

- 1 Sailboat Business Meeting
- 8 Sailboat Dinner
- 10-11 Cruise & Snooze C/D
- 17-18 Star and Bar Regatta
- 24-25 Fall Equinox Regatta

OCTOBER

- 6 Sailboat Business Meeting
- 13 Sail/Power Dinner
- 21-23 Grand Prix Regatta
- 29-30 McCurdy Trophy Regatta

NOVEMBER

- 3 Sailboat Business Meeting
- 10 Sailboat Dinner
- 18 Sailboat Awards Dinner

DECEMBER

- 1 Sailboat Business Meeting
- 8 Sail/Power Gift Exchange

Race Registration Procedure

Online Registration

Online race registration is available from the SYC website under the “Sailboat Racing” link at www.seattleyachtclub.org.

Entry Forms

Race entry forms are available at the SYC Portage Bay clubhouse front desk. Please return your completed form with entry fees to the attention of the Sailing Office at the Seattle Yacht Club.

Deadlines

Registrations must be submitted online or received by the Seattle Yacht Club at the Portage Bay clubhouse by close of business (normally 1700 hours) on the entry deadline for each race. The deadline is typically the Thursday preceding the race unless otherwise indicated in the Notice of Race. Registrations accepted at the discretion of the race committee after the deadline may be assessed a \$20 late fee.

Cancellations

To withdraw, please contact the SYC Sailing Director, listed below.

Season Fee Package

A season fee of \$225 is available for the Tri-Island Series, SYC Jack & Jill, Mark Mayer, and Star & Bar. The deadline for getting a season fee is the deadline for the first race included in the package.

Contact

For questions, comments, season packages, or cancellations, please call or email the SYC Sailing Director, Brian Ledbetter, in the SYC Sailing Office.

Phone: 206.926.1011. Fax: 206.324.8784. Email: BrianL@seattleyachtclub.org



Thank you for racing and making our sport stronger. Every boat counts!
(Photo of Star & Bar Regatta)

Registration Checklist

Date	Event	Cruiser/ Racer	Entry Fee	Deadline ³	Enter
(6 events)	Season Package (TI, SYC J&J, MM, S&B)	Partial	\$225	April 28	<input type="checkbox"/>
(3 events)	Tri-Island Package	Yes	\$125	April 28	<input type="checkbox"/>
April 30	Protection Island (Tri-Island #1)	Yes	\$50 ¹	April 28	<input type="checkbox"/>
May 8	Mark Mayer	Yes	Free	May 6	<input type="checkbox"/>
May 14	Vashon Island (Tri-Island #2)	Yes	\$50 ¹	May 12	<input type="checkbox"/>
May 20-22	Sperry Top-Sider NOOD Regatta (Sailingworld.com)		See NOR	May 9	<input type="checkbox"/>
June 4	Blake Island (Tri-Island #3)	Yes	\$50 ¹	June 2	<input type="checkbox"/>
June 11	Leukemia Cup	Yes	\$150	ASAP	<input type="checkbox"/>
June 25-26	Cruise & Snooze A/B*	Yes	\$40	June 23	<input type="checkbox"/>
July 24-29	Commodore's Cruise*	Only	\$150	June 15	<input type="checkbox"/>
July 30-5	Sunshine Coast Cruise*	Only	Free	None	<input type="checkbox"/>
Aug 27	SYC Jack & Jill		\$40 ¹	Aug 25	<input type="checkbox"/>
Sept 10-11	Cruise & Snooze C/D*	Yes	\$40	Sept 8	<input type="checkbox"/>
Sept 17-18	Star & Bar Regatta		\$90 ¹	Sept 15	<input type="checkbox"/>
Sept 24-25	Fall Equinox Regatta*	Yes	\$40	Sept 22	<input type="checkbox"/>
Oct 21-23	Grand Prix Invitational Boats under 30' 30' to 39' 40' and over	Yes	\$125 ² \$160 ² \$195 ²	Oct 19	<input type="checkbox"/>

¹ Season Package for the Tri-Island Series, SYC Jack & Jill, Mark Mayer, and Star & Bar is available for \$225. Tri-Island Series Package is available for \$125.

² An early signup discount of \$20 available for Grand Prix (within 2 weeks of first qualification or by March 1).

³ Registrations received after close of business on the deadline may be assessed a \$20 late fee.

*Requires membership for use of outstations.

SYC Sailboat Racing Program

With events ranging from one-design championships to the longer-distance Tri-Island races, Seattle Yacht Club actively promotes a variety of racing here in the great Pacific Northwest. In this section:

- Overview of Sailboat Racing Events
- General Notice of Race
- SYC Protection Island Race
- SYC Jack & Jill Race
- SYC Mark Mayer Regatta
- SYC Vashon Island Race
- Sperry Top-Sider NOOD Regatta
- SYC Blake Island Race
- SYC Star & Bar Regatta
- SYC Grand Prix Invitational Regatta

Overview of Sailboat Racing Events

Tri-Island Series

The SYC Tri-Island series continues the tradition of offering longer courses to test your stamina and strategic knowledge of Puget Sound. Winning a Tri-Island will place your yacht's name on one of the most prestigious trophies in the club. At the end of the series, the club will open its doors to all those who have participated for an awards party. A shorter Cruiser/Racer course will be offered for each race.

Protection Island / Double Bluff

The Protection Island course provides our longest race for the year, with several challenging decision points on the course and the opportunity to experience more wind, waves, and current than normal. The Double Bluff course now offers a new destination with new challenges and opportunities. Start off from Shilshole, head north toward Admiralty Inlet, round your mark, and finish back at Shilshole.

Vashon Island / Point Robinson

The Vashon Island course is one of the most popular races with several distinct racing phases. Get ahead and go for a breakaway, or, if not so fortunate, hope to bring the wind to your competitors waiting at the next corner. The short course to Point Robinson now lets you go a little farther than in previous years and face your decisions from a slightly different angle. These tactical courses will take you south with scenic views of Elliott Bay and Mt. Rainier.

Blake Island

The third race in the series takes the Tri-Island racers around Blake Island. Whether you're testing your mettle or rolling the dice, you select which way to round the island.

Mark Mayer Regatta

The Mark Mayer Race is coordinated with the Opening Day weekend. The course is just north of the Evergreen Point Bridge on Lake Washington. A post-race party will be held at the SYC clubhouse.

Sperry Top-Sider NOOD Regatta

The National Offshore One Design (NOOD) Regatta, sponsored by Sperry Top-Sider and organized by Sailing World Magazine, will be co-hosted by Seattle Yacht Club and Corinthian Yacht Club of Seattle. The regatta celebrates tight buoy racing and May is a great month for sailing on Puget Sound with sunshine and consistent wind. Make sure your one-design class is signed up early! Each night will feature a post-race party.

SYC Jack and Jill

The SYC Jack and Jill race is one of several local Jack & Jill races coordinated with different area yacht clubs as a series. Competing in three or more of the races qualifies you for the series overall. The overall award is presented at the SYC awards banquet at the end of the season.

Star & Bar Regatta

This two-day regatta tests around-the-buoys racing skills, with September providing a good chance for dependable wind and warm weather on the last weekend of the summer. Classes for both one-design and PHRF will be available. Post-race parties each day after racing.

Grand Prix Invitational

The season's racing activities culminate with the Grand Prix Invitational Regatta. Boats must qualify for this prestigious invitation-only event. Qualification criteria can be found in the Notice of Race. Whole one design fleets with representative qualifiers may also be invited. You have several chances to qualify, so get out there and give it a shot. Grand Prix tests buoy racing skills and, if conditions are right, middle distance racing skills over a three-day period with parties every evening. What a great way to wrap up the racing season!



Cruiser/Racer competition at SYC Tri-Island, Cruise & Snooze, and Fall Equinox

SYC General Notice of Race

A Notice of Race may be amended by the SYC General Notice of Race. To the extent the SYC General Notice of Race conflicts with a Notice of Race, the Notice of Race takes precedence.

The organizing authority is the Seattle Yacht Club (SYC).

1 Rules

- 1.1 This regatta will be governed by the rules as defined in the Racing Rules of Sailing (RRS).
- 1.2 The prescriptions of US Sailing to the following rules shall apply: 34, 40, 48, 55, 60, 61.4, 63.2, 63.4, 64.3(b), 68, 70.5(a), 76.1, 76.3, 82, 86.3, 88.2, Appendix F, and G2. The text of these prescriptions is available from the US Sailing web site at raceadmin.ussailing.org/rules/prescriptions.
- 1.3 Other changes to the rules may be noted elsewhere in the Notice of Race or Sailing Instructions. If the Notice of Race and Sailing Instructions are in conflict, the Sailing Instructions shall have precedence.
- 1.4 Changes to the Notice of Race will be available from the Seattle Yacht Club web site at www.seattleyachtclub.org or, if not available from the web site, on the notice board at the Seattle Yacht Club south entrance.

2 Eligibility and Entry

- 2.1 Entrants must register online at www.seattleyachtclub.org, or by form delivered to Seattle Yacht Club, and pay appropriate fees by the registration deadline. Registration after the deadline may be accepted at the discretion of the organizing authority and may require an additional late fee.
- 2.2 A boat wishing to use sails with identification different from her own must notify and receive permission to do so from the organizing authority by the registration deadline or when her late registration is accepted. This changes RRS 77.
- 2.3 A boat racing in a handicap class must ensure that her correct rating is issued and recorded by the class organization by the registration deadline or when her late registration is accepted. Boats participating without a valid class certificate will not be entered or scored and her entry fee may not be refunded.
- 2.4 A change in a boat's handicap class rating will take effect on the day it is recorded by the class organization. Changes are not retroactive. When a boat's rating changes between races that are part of a series, the boat shall remain in the same class in which she started the series.
- 2.5 A boat rated by her handicap class in consideration of water ballast may use water ballast as rated. This changes RRS 51.

3 Responsibility

- 3.1 Competitors participate in the regatta entirely at their own risk. See RRS 4, Decision to Race. The organizing authority, Seattle Yacht Club, will not accept any liability for material damage or personal injury or death sustained in conjunction with or prior to, during, or after the regatta. It is the responsibility of each skipper to competently inform their crew of the risks of sailboat racing, to make sure their crew understands and accepts those risks, to decide whether

their crew is competent and their equipment adequate for the event, and to decide whether to start or continue in a race.

4 Equipment and Operating Requirements

4.1 A boat racing in a handicap class must comply with one of the two following sets of equipment requirements, (a) or (b):

(a) *Pacific International Yachting Association (PIYA) Special Regulations Governing Minimum Equipment and Accommodation Standards* (PIYASR) according to the category requirement identified in the Notice of Race. The text of these regulations is available from the PIYA web site at www.ussailing.net/piya. The following changes apply:

- (1) PIYASR 3.8 interpreted that a radar reflector with any dimension less than 6 inches does not meet the requirement.
- (2) PIYASR 5.3 deleted.

(b) *ISAF Offshore Special Regulations* (OSR), without US Sailing prescriptions, according to the category requirement identified in the Notice of Race. The text of these regulations is available from the International Sailing Federation (ISAF) web site at www.sailing.org/documents/special-regs. The following changes apply to OSR Categories 3 and 4:

- (1) OSR 3.02.1, 3.11, 3.19, and 3.22 not required for boats under 9 meters or boats under 12 meters with crew torso position inboard and mostly below the local sheerline except briefly to perform a necessary task.
- (2) OSR 3.14 not required for boats under 9 meters without lifelines or boats under 12 meters without lifelines with crew torso position inboard and mostly below the local sheerline except briefly to perform a necessary task.
- (3) OSR 3.27.5 not required for permanently sealed, non-serviceable LED fixtures.
- (4) OSR 3.28.1 required as in Category 3. If using outboard motor, it shall be on its operating mount and easily inserted into the water for immediate use including during severe sea and wind conditions.
- (5) OSR 3.28.3 required as in Category 3 and (b) duration requirement changed to 6 hours.
- (6) OSR 3.29.1 (a)(i) changed to "an emergency antenna", (b)(ii) not required, and (f) not required.
- (7) OSR 4.04.2 (c) not required.
- (8) OSR 4.06.1 each anchor required must include anchor and 150' of rode consisting of chain and line with rode minimum weight $LOA^2/80$ lbs. and combined anchor and rode minimum weight of $(LOA/17)^3 + LOA^2/80$ lbs. (LOA in feet.)
- (9) OSR 4.07.1 (b) changed to "two watertight flashlights".
- (10) OSR 4.10.1 octahedral radar reflector minimum diagonal measurement changed to 300 mm (12 inches). In addition, radar reflector must have a minimum dimension of 150mm (6 inches) or greater.
- (11) OSR 4.14 not required.
- (12) OSR 4.26.4 (f) and (g) not required.

- (13) OSR 5.01.1 (a) and (b) replaced by US Sailing prescription to RRS 40, (c) required from one hour before sunset until sunrise.
- 4.2 Boats must comply with U.S. Coast Guard regulations.
 - 4.3 Boats must be operated in accordance with the Puget Sound Sailboat Safety Regulations, available from the Seattle Yacht Club web site at www.seattleyachtclub.org.
 - 4.4 The race committee may inspect a boat any time before or after racing for compliance with requirements.
 - 4.5 Penalties under Notice of Race 4 may be less than disqualification. This changes RRS 64.1(a).
- 5 Scoring
- 5.1 The time limit is the maximum allowable time from each boat's starting signal to her finish time or a time of day. Boats that do not finish within their time limit will be scored Did Not Finish (DNF). This changes RRS 35.
 - 5.2 A boat that did not start (DNC, DNS, OCS), did not finish (DNF), retired after finishing (RAF), or is disqualified (DSQ, DNE, DGM, BFD) will be scored the number of finishers plus one. This changes RRS A4.2 and A9.
- 6 Sailing Instructions
- 6.1 Sailing Instructions will be available by the Thursday before the first race from the Seattle Yacht Club web site at www.seattleyachtclub.org or, if not available from the web site, on the notice board at the Seattle Yacht Club south entrance.



m/v Portage Bay

Notice of Race

SYC Tri-Island Protection Island Race

Date: April 30, 2011 (Saturday)

Location: Northern Puget Sound, Admiralty Inlet, and southeastern Straits of Juan de Fuca. The starting line and finishing line will be in Shilshole Bay between Meadow Point and the Shilshole Bay Approach Buoy.

Course:

Long Course: Start by leaving the starting mark to port, round Protection Island to starboard, and finish by leaving the finishing mark to port.

Short Course: Start by leaving the starting mark to port, round Double Bluff Lighted Buoy 1 (LL #16525) to port, and finish by leaving the finishing mark to port.

Sport Boat Course: Same as short course (scored separately).

Cruiser/Racer Course: Start by leaving the starting mark to port, round a temporary mark located off Edmonds at approximately 47° 53.0' N, 122° 24.0' W (47.88N 122.40W) to port, and finish by leaving the finishing mark to port.

Time of First Warning: 0900

Time Limits:

Long Course: 30 hours

Short Course / Sport Boat Course: 12 hours

Cruiser/Racer Course: 8 hours

Classes to Race: PHRF-NW, including Cruiser/Racer, and one-design keelboat

Equipment Requirement Category:

Long Course: PIYASR II or OSR 3

Short Course / Sport Boat Course: PIYASR III or OSR 4

Cruiser/Racer Course: PIYASR III or OSR 4

Other Provisions:

- Notice of Race amended by the SYC General Notice of Race.
- The short course is available to boats rating 75 and slower. The sport boat course is open to boats 33 feet and less rating faster than 75.
- A shortened course option will be available for boats that take their time at a designated shortened course option finishing line. Boats using the shortened course option will be considered finishers and will be scored in class and overall based on their time and the distance for the shortened course starting immediately behind boats finishing the full course.
- This race is part of the SYC Tri-Island Series. There will be no scoring exclusions for the series. This changes RRS A2.

Awards: 1st place overall on each course. For the SYC Tri-Island Series, 1st overall per course and 1st, 2nd, and 3rd in class. Awards will be presented at the awards party.

Social Activities: The series Awards Party will be at the Seattle Yacht Club outstation at Elliott Bay Marina from 5 to 9 PM after the Blake Island race. The party will have plenty of free appetizers, a no-host bar, a live band, and participation prizes for each boat.

Registration Deadline: April 28, 2011 (Thursday)

Registration Fee: \$50 (or \$125 for SYC Tri-Island Series)

Event Chairpersons:

Rhonda Halfman, 425-246-3612, rhondaha@gmail.com

Phil Calvert, 206-910-7977, phil.calvert@comcast.net

Mike Milburn, 206-780-2525, milburn69802@msn.com



Young sailors waiting for the Shilshole wind to come up at the SYC Jr. Olympics

Notice of Race SYC Mark Mayer Regatta

Date: May 8, 2011 (Sunday)

Location: Lake Washington north of the SR520 Bridge. The start and finish will be in the area between Webster Point, Hunts Point, and Sand Point.

Course: One buoy race will be sailed. The courses will be as designated in the Sailing Instructions.

Time of First Warning: 1200

Time Limit: 4 hours

Classes to Race: PHRF-NW, including Cruiser/Racer, and one-design keelboat

Equipment Requirement: US Coast Guard regulations

Other Provisions: Notice of Race amended by the SYC General Notice of Race.

Awards: 1st, 2nd, and 3rd place in class

Social Activities: Party immediately after the race at Seattle Yacht Club.

Registration Deadline: May 6, 2011 (Friday)

Registration Fee: Free!

Event Chairperson: Dan Krier, 206-323-2405, dan@marinesc.com

Notice of Race

SYC Tri-Island Vashon Island Race

Date: May 14, 2011 (Saturday)

Location: Puget Sound. The starting line and finishing line will be in Shilshole Bay between Meadow Point and the Shilshole Bay Approach Buoy.

Course:

Long Course: Start by leaving the starting mark to port, round Maury Island and Vashon Island to starboard, and finish by leaving the finishing mark to port.

Short Course: Start by leaving the starting mark to port, round a temporary buoy north of Point Robinson at approximately 47° 24.0' N, 122° 23.0' W (47.40N 122.38W) to port, and finish by leaving the finishing mark to port.

Sport Boat Course: Same as short course (scored separately).

Racer/Cruiser Course: Start by leaving the starting mark to port, round Blakely Rocks ("K") to port, round the Duwamish Head Light ("D") to port, and finish by leaving the finishing mark to port.

Time of First Warning: 0900

Time Limit:

Long Course: 19 hours

Short Course / Sport Boat Course: 12 hours

Cruiser/Racer Course: 7 hours

Classes to Race: PHRF-NW, including Cruiser/Racer, and one-design keelboat

Equipment Requirement Category:

Long Course: PIYASR II or OSR 3

Short Course / Sport Boat Course: PIYASR III or OSR 4

Cruiser/Racer Course: PIYASR III or OSR 4

Other Provisions:

- Notice of Race amended by the SYC General Notice of Race.
- The short course is available to boats rating 75 and slower. The sport boat course is open to boats 33 feet and less rating faster than 75.
- A shortened course option will be available for boats that take their time at a designated shortened course option finishing line. Boats using the shortened course option will be considered finishers and will be scored in class and overall based on their time and the distance for the shortened course starting immediately behind boats finishing the full course.
- This race is part of the SYC Tri-Island Series. There will be no scoring exclusions for the series. This changes RRS A2.

Awards: 1st place overall on each course. For the SYC Tri-Island Series, 1st overall per course and 1st, 2nd, and 3rd in class. Awards will be presented at the awards party.

Social Activities: The series Awards Party will be at the Seattle Yacht Club outstation at Elliott Bay Marina from 5 to 9 PM after the Blake Island race. The party will have plenty of free appetizers, a no-host bar, a live band, and participation prizes for each boat.

Registration Deadline: May 12, 2011 (Thursday)

Registration Fee: \$50 (or \$125 for SYC Tri-Island Series)

Event Chairpersons:

Rhonda Halffman, 425-246-3612, rhondaha@gmail.com

Phil Calvert, 206-910-7977, phil.calvert@comcast.net

Mike Milburn, 206-780-2525, milburn69802@msn.com

Race Information

Sperry Top-Sider NOOD Regatta

The Seattle Yacht Club and the Corinthian Yacht Club of Seattle will be hosting the National Offshore One Design (NOOD) Regatta in Seattle. The information below is subject to change. DEADLINE for classes to form is May 9, 2011.

Dates: May 20, 21, and 22, 2011 (Friday, Saturday, and Sunday)

Classes to Race: One design or level rated classes, as follows:

- Keelboat classes may include Santana 20, San Juan 24, Thunderbird, Star, Moore 24, J/24, 6 Meter, Etechells, J/105, Melges 24, J/109, Flying Tiger, Melges 32, C&C 115 and other keelboat classes with a prospective minimum of 7 boats registered.
- Centerboard classes may include Laser, Laser Radial, Snipe, Vanguard 15, Tasar, International 14, Thistle, 505, 49er, A-Cat, and other centerboard classes with a prospective minimum of 7 boats registered.

Registration and Information: www.sailingworld.com

SYC Contacts:

Roger Pawley, 425-890-2751, sailrap@msn.com

Steve Travis, 425-753-2701, stravis998@aol.com



2010 US National Team Race Championship for the Hinman Trophy



A nice start at Grand Prix in light air

Notice of Race

SYC Tri-Island Blake Island Race

Date: June 4, 2011(Saturday)

Location: Puget Sound. The starting line will be in Shilshole Bay between Meadow Point and the Shilshole Bay Approach Buoy. The finishing line will be in the northern part of Elliott Bay near or between Elliott Bay Marina and West Point.

Course:

Long Course: Start by leaving the starting mark to port, round Blake Island to port or starboard, round a temporary mark approximately 0.2 NM SSE of West Point Lighted Buoy 1 (LL #16805) to starboard, and finish by leaving the finishing mark to starboard.

Short Course: Same as long course.

Sport Boat Course: Same as long course (scored separately).

Racer/Cruiser Course: Same as long course, however, if the race committee signal boat displays flag "S" at the warning signal, start by leaving the start mark to port, round Decatur Reef Lighted Buoy 2 off Restoration Point (LL #16835) to port, and finish by leaving the finishing mark to starboard.

Time of First Warning: 0900

Time Limits:

Long Course: Earlier of 8 hours or 1900

Short Course / Sport Boat Course: Earlier of 8 hours or 1900

Cruiser/Racer Class Course: Earlier of 8 hours or 1900

Classes to Race: PHRF-NW, including Cruiser/Racer, and one-design keelboat

Equipment Requirement Category: PIYASR III or OSR 4

Other Provisions:

- Notice of Race amended by the SYC General Notice of Race.

- The short course is available to boats rating 75 and slower. The sport boat course is open to boats 33 feet and less rating faster than 75.
- A shortened course option will be available for boats that take their time at a designated shortened course option finishing line. Boats using the shortened course option will be considered finishers and will be scored in class and overall based on their time and the distance for the shortened course starting immediately behind boats finishing the full course.
- This race is part of the SYC Tri-Island Series. There will be no scoring exclusions for the series. This changes RRS A2.

Awards: 1st place overall on each course. For the SYC Tri-Island Series, 1st overall per course and 1st, 2nd, and 3rd in class. Awards will be presented at the awards party.

Social Activities: The series Awards Party will be at the Seattle Yacht Club outstation at Elliott Bay Marina from 5 to 9 PM after the Blake Island race. The party will have plenty of free appetizers, a no-host bar, a live band, and participation prizes for each boat.

Elliott Bay Marina has offered free guest moorage, based on availability, for Friday and Saturday nights. At our request, boats will likely be assigned to raft on the east side of easternmost pier, dock N. Please contact the marina for availability and assignment at 206-285-4817 or VHF 78A.

Registration Deadline: June 2, 2011 (Thursday)

Registration Fee: \$50 (or \$125 for SYC Tri-Island Series)

Event Chairpersons:

Rhonda Halfman, 425-246-3612, rhondaha@gmail.com

Phil Calvert, 206-910-7977, phil.calvert@comcast.net

Mike Milburn, 206-780-2525, milburn69802@msn.com



Race committee volunteers finishing boats aboard Portage Bay

Notice of Race

SYC Jack & Jill Race

Date: August 27, 2011 (Saturday)

Location: Puget Sound in the vicinity of Elliott Bay and Shilshole Bay. The race committee signal boat will make its first signal in the northern part of Elliott Bay near or between Elliott Bay Marina and West Point.

Course: The courses will be as designated in the Sailing Instructions.

Skipper's Meeting: 1130 at SYC Elliott Bay outstation at Elliott Bay Marina

Time of First Warning: 1300

Time Limit: The time limit will be defined in the Sailing Instructions and will not exceed 5 hours.

Classes to Race: PHRF-NW

Equipment Requirement Category: PIYASR III or OSR 4

Other Provisions:

- Notice of Race amended by the SYC General Notice of Race.
- There will be up to three classes: Jack & Jill (crew of one male and one female), Double Handed (two crew total), and Single Handed (one crew total). Entrants in the Jack & Jill class will also be entrants in the Double Handed class.
- Children 12 or under and up to two other guests are allowed on board, but may not help sail the boat or hike outside the cockpit.
- Boats may elect to use flying sails or not during the race. Boats will be rated for flying sails by default. Boats will be rated for non-flying sails if they do not use flying sails and immediately after finishing report to the race committee signal boat that they did not use flying sails. This is not a separate class.
- No auto pilots or wind vanes are allowed.
- All crew must wear a USCG certified personal flotation device while racing.

Awards: 1st, 2nd, and 3rd place in class. There will also be a 1st place award for the lowest scoring non-flying sails boat in the Jack & Jill class.

Social Activities: All competitors are invited to attend the awards presentation at the SYC Elliott Bay outstation after racing.

Moorage: Elliott Bay Marina has offered free guest moorage, based on availability, for Friday and Saturday nights. At our request, boats will likely be assigned to raft on the east side of easternmost pier, dock N. Please contact the marina for availability and assignment at 206-285-4817 or VHF 78A.

Registration Deadline: August 25, 2011 (Thursday). Note: Register at skipper's meeting if absolutely necessary.

Registration Fee: \$40

Event Chairperson: Brian Watkins, 206-276-1445, brwatki_sail@live.com

Notice of Race SYC Star & Bar Regatta

Date: September 17-18, 2011 (Saturday and Sunday)

Location: Puget Sound in the vicinity of Shilshole Bay and the area north of Meadow Point.

Course: The courses will be as designated in the Sailing Instructions.

Time of First Warning: 1030 each day

Time Limit: In the Sailing Instructions and will not exceed 2 hours per race.

Classes to Race: PHRF-NW and one-design keelboat

Equipment Requirement Category: PIYASR III or OSR 4 (for handicap classes)

Other Provisions: Notice of Race amended by the SYC General Notice of Race.

Awards: 1st, 2nd, and 3rd place in class

Social Activities: Parties after each day of racing at CYC Shilshole clubhouse.

Registration Deadline: September 15, 2011 (Thursday)

Registration Fee: \$90

Event Chairperson: Brian Watkins, 206-276-1445, brwatki_sail@live.com



Skipper spotted trimming spinnaker, hang on

Race Information

SYC Grand Prix Invitational Regatta

Note: This is an informal announcement, not a Notice of Race, and is not part of the rules of the event. For more complete and up to date information, please see the Notice of Race at www.seattleyachtclub.org under Sailboat Racing / Regattas.

Dates: October 21-23, 2011 (Friday, Saturday, and Sunday)

Location: The racing area is Puget Sound north of Alki Pt. and south of Pt. Wells. The starting line will be in the vicinity of Shilshole Bay and the area north of Meadow Point.

Course: One or more buoy or mid-distance races may be sailed each day. The courses will be as designated in the Sailing Instructions.

Scheduled Time of First Warning:

Friday:	1300
Saturday and Sunday:	1030

Classes to Race: Classes to race are PHRF Northwest handicap and one-design keelboats of at least 24 feet. Monohull, multihull, and cruiser/racer boats will race in separate classes. Other classes may race at the discretion of the organizing authority.

Other Provisions:

- Qualifying Events – Only boats that qualify based on their performance in selected races in the prior year and are invited, at the discretion of the organizing authority, will be eligible to register. Boats may also qualify at the discretion of the organizing authority. For more information, see the Qualifying Events section, below.
- One Design Fleets – A whole one-design class may qualify if several boats of the class have qualified and can register a number of boats suitable for a one design class start. For more information, please contact the regatta organizers listed below.
- A cruiser/racer class will be open to boats that competed in the cruiser/racer class of any SYC race.
- Permanent trophy recognition will be awarded for each class.
- The race committee will have on-the-water discretion to run one or more races each day.

Awards: 1st, 2nd, and 3rd place in class

Social Activities: There will be parties after racing each day. The awards party will be after racing on Sunday at Seattle Yacht Club.

Registration Deadline: October 19, 2011 (Wednesday)

Registration Fee (based on boat length):

Under 30':	\$125
30' to under 40':	\$160
40' and over:	\$195

Event Chairperson: Darrin Towe, 425-891-2535, dtowe7700@aol.com

Qualifying Events:

The following events are qualifiers in racing classes with at least four boats registered:

Seattle Yacht Club Events (1st, 2nd or 3rd in class)

SYC Tri-Island Series and races:	SYC Mark Mayer Regatta
SYC Smith / Protection Island Race	SYC Jack & Jill Regatta
SYC Vashon Island Race	SYC Star & Bar Regatta
SYC Blake Island Race	SYC Grand Prix Regatta (prior year)
SYC/CYC NOOD Regatta	

Other Events (1st, 2nd, or 3rd in class)

SSSS South Sound Series and races:	WVYC Southern Straits
TYC Vashon Island	CYC PSSR
TTPYC Duwamish Head	RVicYC Swiftsure (S,CF,UCF,JF,UJF)
OYC Toliva Shoal	Whidbey Island Race Week
GHYC Islands	CBSA Cowichan Bay Regatta
CYC Center Sound Series and races	Van Isle 360
CYC Blakely Rock	RVanYC/LYC Vic-Mau
CYC Scatchet Head	CYC PSSC
CYC Three Tree Point	OIYC Round the County

Other Events (1st in class)

STYC Iceberg	RVanYC Easter Seals Regatta
RVanYC VARC Opener	NYC SIN
STYC Blakely Rock Benefit	RIPS Canadian Race Week
RVicYC THRASH	AYC Northern Century
FCYC VARC Spring	BYC PITCH
SBYC/STYC Ballard Cup Series (I-III)	MBYC Maple Bay Regatta
STYC Race to the Straits	SBYC Trans-Puget
SISC Round Saltspring	CYCE Foulweather Bluff
AYC Windermere Cup	STYC Fall
Sail Northwest J-Fest	RVanYC VARC Closer
RVanYC WAVES	

Prior Award Winners

2010	
Flash	Steve Travis
Tachyon	Shaun Breese
Absolutely	Charlie Macaulay
Dos	Paul Faget
Trophy Wife	Glenn Klute
More Uff Da	Ben Braden
2009	
Banshee	Derek Campbell
Dos	Brad Butler
Declaration of Independence	Brian Watkins
Karma	Peter Shorett
Money Shot	Mike Schiltz
Here & Now	Pat Denney
Ladybug	Mark Brink
2008	
Braveheart	Charles Burnett III
Banshee	Derek Campbell
Declaration of Independence	Brian Watkins
Money Shot	Mike Schiltz
Gaucho	John Cahill
Three Ring Circus	Nate Creitz
Jude Stoller	Makika
Tikanga	Dalton Bergan

2007	
Makika	Jude Stoller
Braveheart	Charles Burnett
Ballistic	Gordy Cole
Declaration of Independence	Brian Watkins
Astral Plane	Adam Korbin
Grafix	Dave Martin
Money Shot	Mike Schiltz
Time Warp	Peter Nelson
Three Ring Circus	Nate Creitz
2006	
Makika	Jude Stoller
Coruba	Rob Fleming
Ballistic	Gordy Cole
Finale	Roger Hills
Sunday Ticket	Lance McDonough
Trophy Wife	Glenn Klute
Time Warp	Peter Nelson
Here & Now	Pat Denney
Three Ring Circus	Nate Creitz

2005	
Makika	Jude Stoller
Braveheart	Colin Booth
Storyville	Darrin Towe / John Hoag
Declaration of Independence	Brian Watkins
Corvo	Tom Kerr
Judo Chop	Herb Cole
Gaucho	John Cahill
Percussive Maintenance	Hans Spiller
2004	
Coruba	Rob Fleming
Midsummer	Stig Osterberg
Gaia	Bob Riggle
Break'n Wind	Matt MacGregor
GINNY	Charles Mottl
Eclipse	Brad Butler
Dragonfly	Pat McGarry
2003	
Coruba	Rob Fleming
Midsummer	Stig Osterberg
Declaration of Independence	Brian Watkins
Elixir	Mike Milburn
Isabeau	Carl Freund
Morphine	Brad Butler
Scouter	Mike Wright
2002	
Go Dog Go	Herb Cole
Elixir	Mike Milburn
Dangerous When Wet	Chris Winnard
Sibling Rivalry	Will Marken
2001	
Go Dog Go	Herb Cole
X-S	Colin Nichols
Morphine	Brad Butler
2000	
Elixir	Mike Milburn
Eclipse	Brad Butler
Coral Reefer	Dave Dupree
1999	
Paddywagon	Brian Huse
GINNY	Charles Mottel
Dragonfly	Patrick McGarry
1998	
China Cloud	Bill Buchan
Jubilee	Bill Burnett
Splash Tango 2	Stacey Wilson
Capella	Sherwood/Powley/Kubas
1998	
China Cloud	Bill Buchan
Jubilee	Bill Burnett
Splash Tango 2	Stacey Wilson
Capella	Sherwood/Powley/Kubas
1997	
China Cloud	Bill Buchan
Jubilee	Bill Burnett
Roxanne	Gordon Stoll
Kurrewa	Bob Henderson
Hail Merry	Trevor Hayward
Hanoman	Thomas Reese

1996	
Cassiopeia	Charles Burnett
Charisma	Roser/Robins
Showtime	Bob Mayfield
Fairwind	Putman/Joblonski
Francesca	James Miller
Alderbaran	Sherwood/Kubas
Bedford Lass	John Sterry
Hanoman	Thomas Reese
1995	
Cassiopeia	Charles Burnett
War Pig	Jeff Good
Aldebaran	Steve Kubas
Magic	Dave Schutte
1994	
Oaxaca	Gene Twiner
Aldebaran	Steve Kubas
Choices II	Dave Champion
Mustang Sally	Pryde/Schlitz
1993	
Oaxaca	Gene Twiner
White Lies	James Marta
Elixir	Mike Milburn
Twinkle	Alex Kimball
White Squall	Roger Deitz
1992	
Oaxaca	Gene Twiner
Mustard Seed	Stacey Wilson
Sirius	Ken & Joanna Hays
Another Child	Lloyd Mathison
Rascal	Bill Watkins
1991	
Oaxaca	Gene Twiner
Schuss	Ed Webb
Wild Turkey	David Lynch
The Morgan	Ken & Sandy Robbins
Tiger Rag	Bill Headden
1990	
Jack Rabbit	Don Hebard
Starfire	Nelson/Benjamin
Impulse	Ken & Sandy Robbins
Mo Beta Two	Chuck Pepka
1989	
Snook	Erik Bentzen
Teddy Bear	Grey Hawken
Keladi	Ray Fiedler
Lady Bug	Alan Holt
1988	
Sachem	Bill Buchan
Gadzooks	Willis/Willhite
Rev	John Thompson
1987	
Bonnie	Badgley/Callaghan
Lucille	Stamper/ Stamper
Flamenco	Rocky Goodhope

SYC Deception Class Mini-12 Fleet

With twenty active boats and over 175 races every year, the Seattle Yacht Club Deception Class Mini-12 Fleet is the most active One Design fleet in the Pacific Northwest!

The Deception, built in Victoria B.C., is a 13' sloop designed by two Royal Victoria Yacht Club members to about one-fifth the scale of the 1980's America's Cup yachts. We have forty members as individual boat owners or in boat partnerships, which is a practical way to keep the costs down and get all the boats out for the regattas.

Every year we have seven series consisting of five regattas each. And with our friends at RVicYC and their ten boats, our two clubs alternate as host for an annual Inter-Club Team Race Regatta.



Mini-12's racing on Portage Bay

No regattas are held in August, when some members go on vacation or cruising. To accommodate our members who leave town for skiing or golfing, we score our Fleet Championship using the best five series. Each of our ownerships teams will organize about two regattas per year.

The Mini-12's rest upon yard trailers aboard two barges at the inshore end of Dock 3 at SYC. These barges are equipped with an electric hoist to make launch and recovery easy. Take a close look at the boats and picture getting out racing on Portage Bay as captain and crew! The Mini-12 fleet is a great place to get started in your sailing career and learn from many of the regions finest and most experienced sailors. Contact Fleet Captain Bill Boyeson to come out for a sail.

Mini-12 Race Calendar

Date	Day	Time	Event	Committee
JANUARY				
9	Sunday	1:00	Winter Series, Regatta 1	USA 1
16	Sunday	1:00	Winter Series, Regatta 2	USA 2
23	Sunday	1:00	Winter Series, Regatta 3	USA 3
30	Sunday	1:00	Winter Series, Regatta 4	USA 4
FEBRUARY				
6	Sunday	1:00	Winter Series, Regatta 5	USA 5
13	Sunday	1:00	Late Winter Series, Regatta 1	USA 6
27	Sunday	1:00	Late Winter Series, Regatta 2	USA 7
MARCH				
6	Sunday	1:00	Late Winter Series, Regatta 3	USA 8
13	Sunday	1:00	Late Winter Series, Regatta 4	USA 9
20	Sunday	1:00	Late Winter Series, Regatta 5	USA 10
29	Tuesday	6:00	Spring Series, Regatta 1	USA 11
APRIL				
5	Tuesday	6:00	Spring Series, Regatta 2	USA 12
9-10	Sat-Sun		Inter-Club Team Race Regatta @ RVicYC	
12	Tuesday	6:00	Spring Series, Regatta 3	USA 14
19	Tuesday	6:00	Spring Series, Regatta 4	USA 15
26	Tuesday	6:00	Spring Series, Regatta 5	USA 16
MAY				
5	Thursday	2:00	Canadian Exchange Regatta	TBA
7	Saturday	Noon	Opening Day	
10	Tuesday	6:00	Late Spring Series, Regatta 1	USA 17
17	Tuesday	6:00	Late Spring Series, Regatta 2	USA 18
24	Tuesday	6:00	Late Spring Series, Regatta 3	USA 19
31	Tuesday	6:00	Late Spring Series, Regatta 4	USA 20
JUNE				
7	Tuesday	6:00	Late Spring Series, Regatta 5	USA 21
14	Tuesday	6:00	Summer Series, Regatta 1	USA 1
21	Tuesday	6:00	Summer Series, Regatta 2	USA 2
28	Tuesday	6:00	Summer Series, Regatta 3	USA 3
JULY				
12	Tuesday	6:00	Summer Series, Regatta 4	USA 4
19	Tuesday	6:00	Summer Series, Regatta 5	USA 5
SEPTEMBER				
11	Sunday	3:00	Fall Series, Regatta 1	USA 6
18	Sunday	3:00	Fall Series, Regatta 2	USA 7
25	Sunday	3:00	Fall Series, Regatta 3	USA 8
OCTOBER				
2	Sunday	3:00	Fall Series, Regatta 4	USA 9
9	Sunday	3:00	Fall Series, Regatta 5	USA 10
9	Sunday	5:00	Annual Fleet Owners Mtg	

SYC Sailboat Cruising Program

Cruising events are for members of Seattle Yacht Club, except as noted.

- Overview of Sailboat Cruising Events
- Winter and Spring Power/Sail Mini Cruises
- Leukemia Cup
- Cruise & Snooze
- NORPAC
- Fall Equinox Regatta

Overview of Sailboat Cruising Events

Winter and Spring Power/Sail Mini Cruises

These early-season cruises are open to all SYC boaters, power and sail. Each cruise starts off Shilshole on a Saturday and goes to a nearby destination. They're a terrific way to get a jump on the season and enjoy time on the water with your friends.

Leukemia Cup

SYC is a proud participant in the annual Leukemia Cup Regatta to benefit the Leukemia and Lymphoma Society with a casual race in Elliott Bay and tropical themed auction party. This event is open to everyone. Last year we had over 90 boats and raised over \$150,000 in the name of the Seattle area boating and sailing community. Come take part in doing something fun and good with our sport and join the 90 or so boats and 300 hundred people at the auction party to enjoy the food, the rum, the band, and winning boating related auction items.

Cruise & Snoozes

This time-honored cruising event is ideal for families. With a reverse start and non-flying sails, everyone is guaranteed to have a great time and the racing is optional. Come and enjoy the company of your SYC sailing friends at a casual event.

Commodore's Cruise and Sunshine Coast Cruise

Join friends, and make some new ones, on the week-long Commodore's Cruise from Henry Island to Ovens Island, with casual races most days and overnight stops along the way. Follow it up the week after with the Sunshine Coast Cruise from Ovens to the doorstep of Desolation Sound, with interesting anchorages along the way.

Fall Equinox Regatta

Start off from Shilshole and race to Gig Harbor. Spend the night rafted at the SYC outstation or at a nearby marina and enjoy a barbeque and post-race party. Race back to Shilshole the next day. Cruiser/Racer class start will be provided. SYC welcomes members of all yacht clubs to this event.

Winter and Spring Power/Sail Mini Cruises

OK boaters here is the POWER/SAIL Mini Cruise schedule. AI's are encouraged to attend; kids welcome. If there are small craft warnings, the event is cancelled.

This is classified semi-official non-event event which means there is no charge for TONS of fun and adventure.

Always bring a Greenbox; usually starts around 1730. Dinner is potluck or at a local restaurant as below.

Registration Deadline: For information or to sign up, e-mail or phone Chris Warner as noted below, by 1600 on the Friday before each cruise.

Chairpersons: Chris Warner, 206-782-1277, panther@seanet.com

<u>Date</u>	<u>Destination</u>	<u>Dinner</u>
January 8-9	Port Madison	Potluck dinner
January 22-23	Eagle Harbor	Dinner at the pub or restaurant at the head of the marina
March 19-20	Gig Harbor	Potluck dinner
April 23-24	Bremerton	Anthony's
May 28-29	Poulsbo	Italian Place in marina lot



US Sailing Race Management Seminar at SYC
Thank you Race Committee Volunteers!

Leukemia Cup Regatta

Let's do something good with our great sport

SYC is a proud participant of the annual Leukemia Cup Regatta to benefit the Leukemia and Lymphoma Society. There are many high-quality charities, and we've been working together with this one for several years to do something good as a broad expression of our community that's noticeable and fits with our style.

Last year we had over 90 boats and raised about \$150,000 in the name of the Seattle area boating and sailing community. The auction party had over 300 attendees who enjoyed the food, the rum, the band, and winning boating-related auction items.

You can participate in many ways, including just by registering and showing up for the sailboat regatta on Elliott Bay and/or the auction party that evening. By participating, you make the event bigger and more attractive to corporate sponsors and you also help us reach more potential fundraisers and donors. Please consider getting your boat off the dock and participating. We're also looking for powerboats to host guests in the spectator fleet.

If you're interested, we'll attempt to match you with patients and their families so you can have someone in your thoughts if you happen to be raising money and possibly bring as guests on the water, if they are able, for a much appreciated get away. I promise you will see something immediate and wonderful just by sharing what you're already doing.

Date: June 11, 2011 (Saturday)

Location and Schedule (all at Elliott Bay Marina):

Registration	1000 – 1300 (SYC Outstation)
Skipper's Meeting	1245 (SYC Outstation)
Regatta	1400 - 1700
Party	1700 - 2130

Elliott Bay Marina has offered free guest moorage, based on availability, for Friday and Saturday nights. At our request, boats will likely be assigned to raft on the east side of easternmost pier, dock N. Please contact the marina for availability and assignment at 206-285-4817 or VHF 78A.

Course: Two laps in Elliott Bay.

Classes to Race: Everyone is welcome to race or cruise.

Registration Donation: \$150 to the Leukemia and Lymphoma Society (includes two party tickets). Additional party tickets \$25.

Registration: Please register with the Leukemia and Lymphoma Society online at <http://www.leukemicup.org/wa>.

SYC Contact: Brian Watkins, 206-276-1445, brwatki_sail@live.com

Please contact Brian if you want to learn more about this event. We're looking for sailboats to enter in the regatta, powerboats for the spectator fleet, and for everyone to have fun at the party. Thank you!

Notice of Race

SYC Cruise & Snooze

(Power boaters encouraged to attend)

This is a great event. Sail over to Port Madison and back the next day. No flying sails. Ratings adjusted to favor slower boats. Inverted starts so fewer boats start together. Super green box. Potluck dinner with more than enough to eat.

Date:

Races A/B (Saturday/Sunday): June 25-26, 2011

Races C/D (Saturday/Sunday): September 10-11, 2011

Location: Puget Sound in the vicinity of Shilshole Bay. For Saturday, the start will be off the Shilshole south entrance. For Sunday, the start will be off Point Monroe.

Course: The courses will be posted on the Race Committee boat. Mark locations can be found on the Puget Sound Course Map in the back of the SYC Race Book.

Time of First Warning:

Races A and C (Saturdays): 1100

Races B and D (Sundays): 1200

Time Limit: 1700 each day

Classes to Race: PHRF-NW, including Cruiser/Racer

Other Provisions:

- Notice of Race amended by the SYC General Notice of Race.
- You do not need a PHRF-NW rating to race. Performance handicaps will be assigned for this event as necessary.
- No spinnakers or other flying sails may be used. Only one working sail may be flown on its stay at any time, except during sail changes.
- All races will be reverse start.
- SYC members only event.

Awards: Special awards will be made at the conclusion of each Saturday race. Recipients will be selected by the Race Committee. The Cruise & Snooze Cannon Trophy will be awarded to the series overall winner along with plaques for class.

Social Activities: Greenbox at 1700 on Saturday after racing. Dinner will follow at 1830. Main course is provided. When you sign up to attend, please let the front desk know whether you will bring a main dish, salad, or dessert for twelve people. A logger's breakfast will be served at 0800 on Sunday morning.

Registration Deadline:

Races A/B (Saturday/Sunday): June 23, 2011 (Thursday)

Races C/D (Saturday/Sunday): September 8, 2011 (Thursday)

Registration Fee: \$40 for A/B, \$40 for C/D. The fee provides for two adults per boat; a \$10 fee applies for each additional adult on board. No charge for children.

Chairpersons: Chris Warner and Pam Murray, 206-783-5005, panther@seanet.com

Commodore's Cruise San Juan and Gulf Islands

The Commodore's Cruise is a power and sail event! Tons of fun! Starts at Henry Island and ends at Owen's Island.

Dates: July 24 to July 29, 2011 (Sunday to Friday)

Sunday	Greenbox at Henry Island 1730 w/event schedule and info
Monday	Race #1 to Sydney, huge greenbox at Sydney Marina
Tuesday	Race #2 to Ganges, greenbox at outstation
Wednesday	Lay day, star raft in Montague Harbor
Thursday	Race #3 to Owen's Island, awards, barbeque, prizes
Friday	Lead sinker pancake breakfast

Registration: Please register by June 15 at the front desk at SYC.

Chairpersons: Roger and Lyn Pawley, 425-890-2751, sailrap@msn.com

Sunshine Coast Cruise British Columbia

This is a power and sail event. Destinations and anchorages selected will be weather dependent and large enough to accommodate all boats safely. Be prepared to anchor in 10 fathoms of water. We will raft as much as we can. This is an EXTREMELY COOL semi-official non-event event, meaning there is no charge.

This cruise starts after the Commodore's Cruise at Ovens Island and ends on the doorstep to Desolation Sound at the Cortes Island outstation. We will visit places around the Straits of Georgia rarely seen by SYCers like Lasqueti Island, Hornby Island, Comox, and Savary Island. Guests may arrive or depart by scheduled air service at Nanaimo and Comox. You can join or leave the cruise at any point.

Dates: July 30 to August 5, 2011 (Saturday to Friday, be prepared to be flexible)

Saturday	From Ovens Island to Nanaimo. Greenbox on <i>Panther</i> .
Sunday	Depart Nanaimo for Lasqueti. Greenbox.
Monday	Depart Lasqueti for Tribune Bay. Greenbox.
Tuesday	Lay day.
Wednesday	Depart Hornby for Comox Marina via Baynes Sound.
Thursday	Depart Comox for Savary Island or Gorge Harbor.
Friday	Depart Savary Island or Gorge Harbor for Cortez Island.

Chairpersons: Chris Warner and Pam Murray, 206-782-1277, panther@seanet.com

Notice of Race

SYC Fall Equinox Regatta

The SYC Fall Equinox Regatta features Saturday racing to Gig Harbor, a party at the outstation, and racing back to Seattle on Sunday. Time limits are set to get in plenty of sailing and enjoy the Saturday potluck barbeque. Racing, cruising, flying sails, non-flying sails, and short-handed boats welcome.

Dates: September 24-25, 2011 (Saturday and Sunday)

Location: Puget Sound. The start on Saturday will be off West Point.

Courses: The courses will be as designated in the Sailing Instructions.

Time of First Warning:

Saturday: 1000

Sunday: 1100

Time Limit: 1645 each day, or earlier if specified in Sailing Instructions

Classes to Race: PHRF-NW classes, including Cruiser/Racer class.

Equipment Requirement Category: PIYASR III or OSR 4

Other Provisions:

- Notice of Race amended by the SYC General Notice of Race.
- SYC welcomes members of all yacht clubs to this event, although SYC membership required to moor at outstation.
- Boats may elect to use flying sails or not during the race.
- Boats may ask for and receive coaching while racing from a coach designated by the race committee. The coach may be a member of the race committee. If practical, coaching communication shall be over VHF for all competitors to hear. This changes RRS 41.

Awards: Awards Saturday evening for that day's race for 1st, 2nd, and 3rd in class.

Social Activities: There will be a party after the racing on Saturday. Bring hors d'oeuvres or side dishes and stories to share. A potluck dinner at roughly 1800 hours.

Registration Deadline: September 22, 2011 (Thursday)

Registration Fee: \$40 per boat.

Chairperson: Paul Walchenbach, 206-948-7095, pjwalch@sprynet.com



Stopover at Gig Harbor Outstation for SYC Fall Equinox

SYC Sailing School and Junior Race Team

The Sailing School and Junior Race Team offer small boat sailing for members and guests of all ages with an emphasis on junior sailing development. In this section:

- Summer Sailing School
- Junior Race Team
- Tuesday Night (Family Night) Race Series
- High School Sailing at SYC
- Opti Green Fleet Program
- Adult Sailing Courses
- Private Sailing Lessons
- Small Boat Fleet at SYC
- Contact Information

Summer Sailing School

The Seattle Yacht Club has a long-standing tradition of providing an outstanding Junior Sailing School program for children in the Seattle area. We offer classes for children from 7-17 years of age with a wide variety of class options. Over 500 young sailors participate in a total of 39 classes over an eleven-week period each summer. The hand-selected instructional staff is trained through US SAILING, and CPR and First Aid certified.

This year's program will run from June 20th through September 2nd, 2011. Classes run from 9:00 am - 4:00 pm Monday through Friday. Students can sign up for a week at a time.



Opti sailing in Portage Bay

Member Registration. Members will be able to register from March 14th-16th via fax, mail, or in person. After the 16th, the policy will be first-come, first-served whether member or non-member. We ask that you use your SYC membership

number for billing purposes. Member prices include members' children, grandchildren, and junior members.

Non-member Registration. Guest registration will begin on Thursday, March 17th from 8:30 a.m. - 6:00 p.m. at the south entrance to the Seattle Yacht Club Portage Bay clubhouse in the Sailing Office. Class availability will be on a first come, first-served basis. After March 17th, registrations will be accepted via mail or fax.

Junior Race Team

The SYC Race Team invites aspiring young sailors to join in the fun, support, friendships, and camaraderie that develop from being a part of a nationally competitive sailing team. SYC Race Team sailors can take part in 75 scheduled practices and enjoy support from our coaching crew at seven regional regattas. Advanced sailors compete in both national and international events, and over the years, the SYC program has helped in the development of many Olympic class sailors as well.

Selected Northwest Youth Race Circuit Schedule

June 11-12	BYC Junior Sea to Ski Regatta, Bellingham, Washington Contact: Scott Wilson (swilson@wilsonengineering.com)
June 25-26	VLSC Vancouver Lake Regatta, Vancouver, Washington Contact: Dave Cannard (dave@netequality.org)
July 16-17	CGRA WIND Youth Regatta, Cascade Locks, Oregon Contact: Jarvis Brecker (jarvis@cgra.org)
Aug 6-7	NWMC Junior Regatta, Port Townsend, Washington Contact: Eric Coburn (erik_coburn@hotmail.com)
Aug 13-14	CGRA Opti Gorge Regatta, Cascade Locks, Oregon Contact: Jarvis Brecker (jarvis@cgra.org)
Aug 20-21	SYC Northwest Junior Olympics, Seattle, Washington (Shilshole) Contact: Brian Ledbetter (brianl@seattleyachtclub.org)
Sept 10-11	Jonny Adams Memorial Regatta, Port Madison, Washington Contact: Glen Hartman (gkhartmann@gmail.com)
Sept 24-25 (tentative)	CYC/SSP Octoberfest, Seattle, Washington (Sand Point) Contact: Morgan Collins (morgan@sailsandpoint.org)

Tuesday Night (Family Night) Race Series

Members of the Race Team, club members, and their guests are welcome to sail Tuesday evenings in Portage Bay on Lasers, Bytes, Opti's, and V15's. This is a great place for those new to racing to gain confidence, time on the water, and transition to Race Team sailing. Younger sailors are encouraged to pair up with parents, or older Race Team members!! Sailing runs Tuesdays, June 21st to August 30th, 5:00PM to 7:00PM. Sailing, games on the lawn, and taco bar for 9 bucks.

High School Sailing at SYC

To help promote High School Sailing in Seattle and create a place for graduates of our sailing school to begin participating in the sport, we are now offering a membership to the SYC Race Team for the High School season.



Vanguard 15: multi-purpose, double-handed one design (fun too)

This program is open to all kids from 7th- 12th grade and does not require your school to form a team. We will mix and match sailors from all schools. Opti sailors are welcome to practice, but might not meet the grade requirement to race. This year we are providing practices at SYC twice a week during the spring season from March till late May. This will also include coaching at many local events (check www.nwisa.org for the most up-to-date schedule).

Opti Green Fleet Program

Interested in taking the first step to becoming a racer? The Opti Green Fleet is the best place to start for kids ages 8-13. The group meets each summer on Wednesday evenings from 5:00 to 7:30 at SYC on Portage Bay. Using our club boats, you will learn the basics of racing, advanced rigging, and boat handling. A coach will also be on hand at three local regattas. Once you feel ready to head out to Shilshole and sail with the regular Opti Team, your fee can be forwarded toward the regular Race Team annual fee. Cost for the Opti Green Fleet Program is \$200 for members, \$250 guests.

Adult Sailing Courses

Seattle Yacht Club's adult sailing sessions offer an excellent way to get out on the water and learn the basics of small boat sailing. Using the club's Vanguard-15's, 420's, and Lasers, the classes start with the basics including rigging, points of sail, sail trim, boat-handling, and boating safety. Students develop their skills through on-the-water sessions, "chalk talk" discussions, and work in textbooks. Classes are open to all levels, and advanced sessions are offered for more experienced sailors ready to learn racing tactics.

Private Sailing Lessons

Enjoy the individual attention and customized instruction of private lessons at Seattle Yacht Club. Whether you're looking to learn from scratch, refresh your basic sailing skills, or learn more advanced techniques, private lessons provide the opportunity to learn what you want when you want.



Double-handed 420 in Shilshole Bay

The Small Boat Fleet at SYC

SYC is committed to our program to grow boating with the acquisition and maintenance of our small boat fleet and support boats, including twenty Lasers, eleven Bytes, twenty-nine Optimists, one 29er, twelve Vanguard 15's, eight 420's, five Avon inflatables, six Boston Whalers, one Grady White, and the 39' m/v *Portage Bay* trawler.

The Optimist is an eight foot, kid-sized single-handed dinghy that is easy to manage and fun to sail. The "Opti" is a great boat for juniors to begin sailing, and advance to racing easily.

The Vanguard-15 is the primary training boat at SYC. This stable, double-handed boat with a main and jib is the national standard for novice and advanced sailors to master the basics and to develop teamwork.

The Olympic-Class Laser is a high performance single-handed dinghy for intermediate and advanced sailors. It is a great platform to build boat-handling and racing skills. This boat has two different size sails, allowing us to tailor the boat to the weight of the sailor.

The 420 is an ideal entry-level training boat for all ages. This is a double-handed boat with main and jib. Advanced sailors can rig the spinnaker and trapeze for an exhilarating thrill.

Sailing Office Contact Information

The Sailing Office is located at the SYC main clubhouse on the bottom floor near the south entrance. Please contact the Sailing Office personnel for any questions or information.

Brian Ledbetter, Sailing Director, brianl@seattleyachtclub.org

Angela Leffingwell, Sailing Programs Coordinator, angela@seattleyachtclub.org

Ben Glass, Race Team Coach, beglass@seattleyachtclub.org

Phone: 206-926-1011

Fax: 206-324-8784



The Olympic class Laser, Laser Radial, and Laser 4.7



US National Team Race Championship competitors getting ready

Awards and Recognition

Thank you and congratulations to everyone who volunteered and competed last year.

Junior Sailing Awards

<u>Trophy</u>	<u>Event</u>	<u>Recipient</u>
Bill Burdick Trophy	Junior Sailor of the Year	Teddy Weaver
Brent Nichols Trophy	Outstanding Sportsmanship / Inspirational Sailor	Sarah Mackey
Ernest Gann Award	Outstanding Jr. Instructor	Andrew Colebrook
Captain Lovejoy Trophy	Most Improved Sailor	Alex Demmler
Joe Duthie Trophy	Top SYC Female Sailor	Sarah Mackey
Stimson Trophy	Top SYC Male Sailor	Jack Toland

Outstanding Achievement in Sailing

<u>Trophy</u>	<u>Event</u>	<u>Recipient</u>
Outstanding Cruising Family Trophy	Cruising Sailboat of the Year	<i>Jarana,</i> Bill and Kathy Cuffel
Ruptured Eardrum Trophy	Outstanding Race Committee Member	Denny Johnson
Bob Gibbons Trophy	One-Design Sailor of the Year	Katy Cenname Helena Scutt
Lake Union Sailing Trophy	Outstanding Crew Member	Joy Okazaki
Golden Potlatch Trophy	Outstanding Cruiser/Racer	Paul Walchenbach
Kelly O'Neil Henson Trophy	Best SYC Swiftsure	<i>Marda Gras,</i> Marta Phelps
Bates McKee Memorial Trophy	Sailboat of the Year	<i>Eye Candy,</i> Jim Marta
Marymont Trophy	Sailor of the Year	SYC Hinman Team: Dalton Bergan Jen Glass Anthony Boscolo Lindsay Bergan Andrew Loe Mallory Fontenot
Perpetual Sailboat Trophy	William W. Heylman Memorial Award	Brian Watkins

Sailing Performance Awards

Tri-Island Series

Smith Island Race

Jerry Bryant Trophy (Long)	Stuart Burnell	<i>Tantivy</i>
Horder Trophy (Short)	John Peterson	<i>Last Tango</i>
Cruiser/Racer (C/R)	Paul Walchenbach	<i>Mata Hari</i>

Vashon Island Race

Vashon Island Trophy (Long)	Steve Travis	<i>Flash</i>
Rawson Trophy (Short)	Paul Faget	<i>Dos</i>
Cruiser/Racer (C/R)	Brian Berg	<i>Magician</i>

Blake Island Race

Blake Island Trophy (Long)	Chester Hibbert	<i>Jack Rabbit</i>
Blake Island-Short (Short)	Gary Morgan	<i>What a Tripp</i>
Cruiser/Racer (C/R)	David Field	<i>Quorum</i>

Tri Island Series Overall

Walt Little Trophy	Steve Travis	<i>Flash</i>
First President's Trophy	Gary Morgan	<i>What a Tripp</i>
Cruiser/Racer	Brian Berg	<i>Magician</i>

Mark Mayer

PHRF 1	Cory Anderson	<i>Il Falco</i>
PHRF 2	Tom O'Brien	<i>Lawton P. Evans</i>
Cruiser/Racer	Phil Calvert	<i>Runaway</i>
Thunderbird	Nic Wayland	<i>Zoe</i>

SYC Jack & Jill

PHRF	Kathryn Myer / Bill Blodgett	<i>More Cowbell</i>
------	------------------------------	---------------------

Team Racing Pacific Coast Championship

1st	Jen Glass Dalton Bergan Lindsay Bergan Andrew Loe Mallory Fontenot Anthony Boscolo	<i>Sideshow SYC</i> Seattle, WA
2nd	Michael Karas Kimberley Zehnder Molly Jackson Andy Schmidt Erin Schmidt Brendan Fahey	<i>Rainier Bears</i> Corvallis, OR

3rd	Kevin Richards Avery Patton Pat Whitmarsh Natasha Baker Andy Beckman Linda Stephen	<i>Cali Crushers</i> Alameda, CA
-----	---	-------------------------------------

Northwest Jr. Olympics

29er	Kate Shaner / Aby Harmann
Laser	Taylor Smith
Laser Radial	David Brink
Optimist	Alexa Ripple

US Team Racing Championship (George R. Hinman Trophy)

1st	Colin Merrick Amanda Callahan Clay Bischoff Caroline Hall Levesque Peter Levesque Carrie Amarante	<i>NYC Silver Panda</i> New York, NY
2nd	Dom Johnson Debs Steele Andy Cornah Hamish Walker Ben Field Tom Foster	<i>West Kirby Hawks</i> West Kirby, England
3rd	Zachary Brown Emmet Smith Thomas Barrows Marla Menninger Stuart McNay Michael Hession	<i>Team Extreme</i> New Haven, CT

NOOD Regatta

J/109	Robert Arney	<i>It's Only Rock n Role</i>
Beneteau 36.7	Freund / Swackhamer	<i>Veloce</i>
J/105	Gerald Hirschler	<i>Jaded</i>
J/24	Michael L. Johnson	<i>Hot Pursuit</i>
Performance 30	Laney Gale	<i>Blue Martini</i>
Thunderbird	Craig Burnell	<i>Predator</i>
Melges 24		<i>Junk Shot</i>
San Juan 21 (NFS)		<i>Yellow Jacket</i>
San Juan 21		<i>Kermit</i>
San Juan 24		<i>Snappy Tom</i>

Santana 20		<i>Inferno</i>
Sport Boat		<i>Redfish Bluefish</i>
Ultimate 20		<i>Black Sheep</i>
29er	Katy Cename	<i>Langtime</i>
505	C. Buchan / D. Bergan	<i>Yellow Jacket</i>
Laser	Dave Watt	
A-Cat	Ken Marshack	
Thistle	Terry Lettenmaier	
Intl Formula 18	John Hoag	
Vanguard 15	Jack Toland	<i>Tommy</i>

Whidbey Island Race Week

Xzora Trophy	John Hoag	<i>Shrek</i>
--------------	-----------	--------------

Star & Bar

PHRF 1	Chester Hibbert	<i>Jack Rabbit</i>
PHRF 2	David MacLean	<i>Illusionist</i>
PHRF 3	Donald Wills II	<i>Shoot the Moon</i>
J/105	John Peterson	<i>Last Tango</i>
PHRF 5	John Cahill	<i>Gaicho</i>
Moore 24	Benjamin Braden	<i>More Uff Da</i>

Grand Prix

Cadranel Trophy	Steve Travis	<i>Flash</i>
Robert. H. Perry Trophy	Shaun Breese	<i>Tachyon</i>
Charles Ross Trophy	Charles Macaulay	<i>Absolutely</i>
Griffiths Trophy	Paul Faget	<i>Dos</i>
Kennel Windpennant	Glenn Klute	<i>Trophy Wife</i>
Invictus Trophy	Benjamin Braden	<i>More Uff Da</i>



Keeping it upright at Grand Prix

Appendix

In this section:

- Sailboat Leadership Team (October – September)
- Sailboat Program Contacts
- Puget Sound Sailboat Safety Regulations
- Mark Descriptions
- Buoy Course Marks Diagram
- Puget Sound Marks Diagram

Sailing Program Leadership Team (October – September)

Commodore	Kim Lorenz
Vice Commodore	Chuck Lowry
Rear Commodore	Rob Rothe
Sail Fleet Captain	Dave Ferguson
Race Chairman	Brian Watkins
Cruise Chairman	Chris Warner
Sailing Director	Brian Ledbetter
Junior Commodore	Maddie Erjavec
Junior Vice Commodore	Danielle Erjavec
Junior Rear Commodore	Ryan Green
Junior Secretary	Alexis Aird
Junior Advisor	Carol Clemett
Race Committee (as of prior year)	Wil Anderson, Annie Anhalt, Darren Anhalt, Tom Barrigan, Roman Budzianowski, Pat Crockett, Lance Downing, Dave Ferguson, Kimberly Frost, Ben Glass, Denny Johnson, Keith Johnson, Leslie Keller, Brian Ledbetter, Jim Medley, Mike Milburn, Lyn Pawley, Roger Pawley, Warren Pawley, Charlie Pelly, Brianna Rockenstire, Karole Sherlock, Paul Thorlakson, Curt Warner, Brian Watkins
Protest Committee Chair	Jim Medley

Sailing Program Contacts

Fleet Captain Sail	Dave Ferguson	mailto:dave@clanfergus.net 425-835-2513
Racing Activities Chair	Brian Watkins	brwatki_sail@live.com 206-276-1445
Cruising Activities Chair	Chris Warner	panther@seanet.com 206-782-1277
Race Committee Chair	Roger Pawley	sailrap@msn.com 425-890-2751
Protest Committee Chair	Jim Medley	jim.medley@comcast.net 206-361-0513
PHRF-NW Handicapper	Mike Milburn	milburn69802@msn.com 206-780-2525
Mini 12 Fleet Chair	Paul Thorlakson	thorlakson@msn.com 425-454-9996
Sailboat Dinner Programs	Paul Walchenbach	pjwalch@sprynet.com 206-948-7095
SYC Sailing Director	Brian Ledbetter	brianl@seattleyachtclub.org 206-325-1000

See Notices of Race for individual event chairpersons.



Mini-12 Fleet Action on Portage Bay

Puget Sound Sailboat Safety Regulations

2002 Revision

As adopted by the Shilshole Bay, Sloop Tavern, Corinthian, and Seattle Yacht Clubs

We must share Puget Sound with its commercial traffic, including many deep-water vessels and tows. It is sobering to note that, if your boat is one mile dead-ahead of a freighter coming down the Sound at normal speed, and the freighter's helm is put hard over to avoid you, the freighter's bow will miss you, but her stern will not! Obviously, this implies that early and decisive action is required to keep your boat out of the path of a large oncoming vessel or tow.

1. Yachts must not sail across a tow line, too close ahead, or too close alongside of commercial traffic. Deep water vessels have limited ability to change course and speed. Barges under tow can yaw unexpectedly well out to the side at speeds essentially the same as they are being towed. Yachts should not pass less than one mile ahead and 1/4 mile to the side of large vessels.
2. Rule 10 of the International and Inland Rules to Prevent Collisions at Sea (COLREGS) requires that no power-driven vessel less than 20 meters (66 feet) in length, and no sailing vessel (of any size) may impede the safe passage of a power-driven vessel following a Vessel Traffic System (VTS) Lane.
3. Rule 9 of the COLREGS requires that no power vessel of less than 20 meters (66 feet) in length and no sailing vessel (of any length) shall impede the safe passage of any vessel which can navigate only within a narrow channel or fairway. Puget Sound can be considered a "narrow channel" for most large commercial traffic. "Impede" means to cause to alter speed or course or to take evasive action.
4. A yacht in position where it may impede commercial traffic must exit from the "danger area" immediately, under auxiliary power if necessary. If power is used, it must be reported to the Race Committee at the finish line. Also, a written report must be made on a protest form, showing the location, time, duration of power use, speed, direction of exit, and that the competitive position of the yacht was not improved. If the last item cannot be demonstrated adequately, a time penalty may be imposed.
5. Radar reflectors must be flown at all times when racing. They must meet IMO recommendations (i.e., of metal plates of sufficient rigidity to maintain a 90 degree angle), be not less than 12 1/2 inches in diameter, and be installed not less than 4 meters (13 ft.) above the water. See PIYA Special Regulations paragraph 3.8.
6. Navigation lights must be shown between sunset and sunrise as required by the International Rules of the Road.
7. Observed and/or reported violations of the safety regulations may be protested. The Race Committee shall have the option of issuing a "warning" when deemed appropriate. Warnings are recorded and may be considered when judging any future reports.

Mark Descriptions

The following mark descriptions include buoy course marks in position relative to the race committee signal boat and Puget Sound marks in position based on geographic location. Bearings are magnetic. Distances are in nautical miles (NM). Bearings and distances are approximate.

The descriptions below have precedence over the diagrams.

Please note that the Sailing Instructions for a particular race may use modified or different mark descriptions than described here.

Buoy Course Marks (position relative to race committee signal boat)

S	Red or orange starting mark (may also be used as a finishing mark)
A	Yellow mark to windward of race committee signal boat
B	Yellow gybe mark
C	Yellow mark to leeward of the race committee signal boat
X	Red mark to windward of race committee signal boat
Z	Red mark to windward of race committee signal boat, within approx. 0.2 nautical miles
U	Red mark to leeward of the race committee signal boat
F	Yellow finishing mark

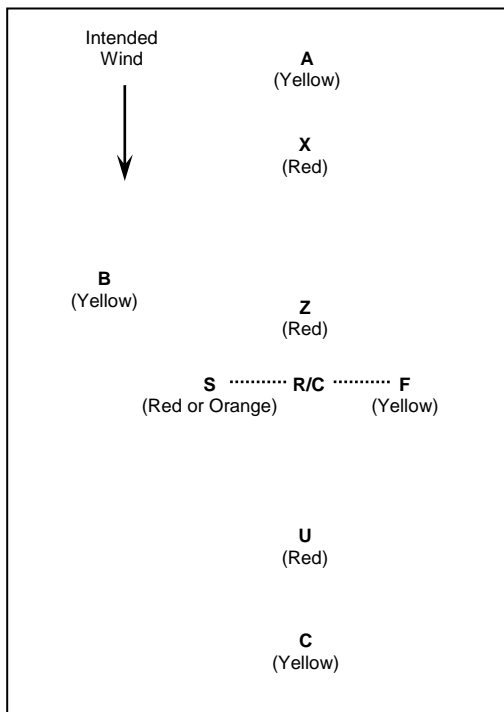
Puget Sound Marks (position based on geographic location)

D	Duwamish Head Lt. (LL #16910)
E	Shilshole Bay Approach Buoy (LL #16785)
G	Temporary mark 1.5 NM bearing 340° from Meadow Pt. Buoy
H	Temporary mark 0.3 NM E of Skiff Pt.
I	Temporary mark 0.5 NM N of Alki Pt.
J	Shilshole Bay North Mooring Buoy 0.25 NM SSW of Shilshole Marina north entrance
K	Blakely Rock (LL #16830)
L	Shilshole Bay South Mooring Buoy 0.5 NM SW of Shilshole Marina south entrance
M	Meadow Pt. Buoy (LL #16765)
O	Temporary mark 0.75 NM bearing 250° from Meadow Pt. Buoy
P	Temporary mark 0.75 NM NNE of Pt. Monroe
Q	Temporary mark 3.0 NM bearing 340° from Meadow Pt. Buoy
R	Temporary mark 0.5 NM SW of Pt. Wells
T	Temporary mark 0.5 NM SE of Pt. Jefferson
V	Temporary mark 0.3 NM NNE of Wing Pt.
W	West Pt. Buoy (LL #16805)

Buoy Course Marks Diagram

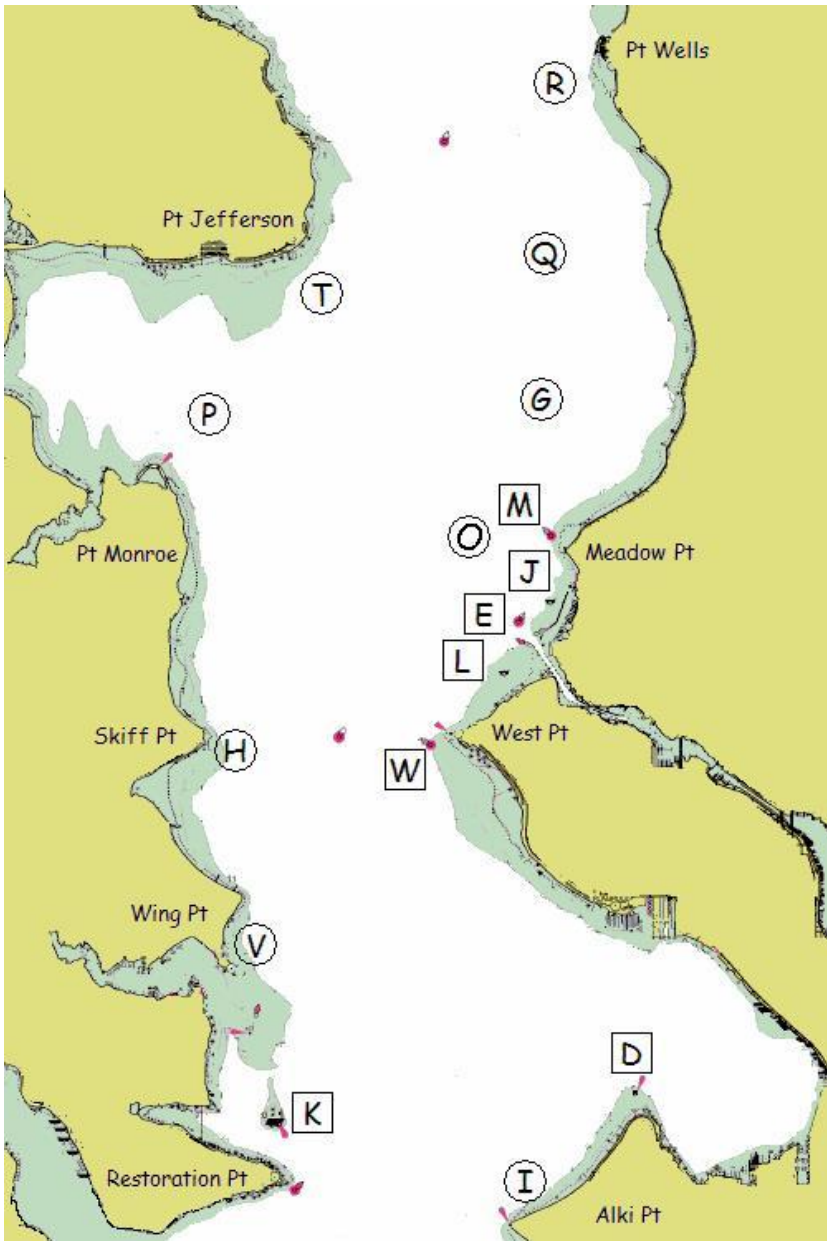
The diagram for buoy course marks depicts the general orientation of the marks (identified by the letters S, A, B, C, X, Z, U and F), the race committee signal boat ("R/C"), and the wind. All marks are inflatable buoys. The diagram is not drawn to scale and the positions are only approximate.

Please note that the Sailing Instructions for a particular race may use modified or different mark descriptions than described here.



Puget Sound Marks Diagram

Each temporary mark is shown with its label in a circle. Each permanent mark is near its label in a square box. Positions are approximate.





www.seattleyachtclub.org

Cover photo courtesy of Jan's Marine Photography