



# Seattle Yacht Club

*Established in 1892*

## 2025 Race Book



**Hooligan - Boat of the Year - 2024**



Seattle Yacht Club hosts PNW Junior Olympics Regatta.



1807 East Hamlin Street  
Seattle, Washington 98112  
[www.SeattleYachtClub.org](http://www.SeattleYachtClub.org)

# Table of Contents

Welcome to the 2025 Sailing Season.....	1
2025 Race and Events Calendar.....	2
Race Registration Procedure.....	3
2025 Registration Checklist.....	4
Racing Program.....	5
Overview of Sailboat Racing Events.....	5
SYC General Notice of Race.....	8
Puget Sound Sailboat Safety Regulations.....	10
Puget Sound Orca Safety Regulations.....	11
Buoy Course Marks (position relative to R/C).....	12
Geographic Marks (position based on location).....	13
Notice of Race Mark Mayer Opening Day Race.....	14
SYC Protection Island Race - Tri-Island #1.....	16
Notice of Race.....	16
Race Information - Grand Prix XLVIII.....	23
Club Championship Regatta.....	24
Notice of Race.....	24
2025 Clean Regatta Goal.....	26
2025 Sailing Programs Information.....	28
J/22 Sailboat Fleet.....	28
Mini 12 Fleet.....	28
SYC Mini-12 Class 2025 Schedule.....	30
Sailboat Cruising Program 2025.....	31
2025 Winter/Spring Mini-Cruise Series.....	31
Commodore's Cruise (San Juan and Gulf Islands).....	32
Spring and Fall Cruise & Snooze.....	33
Sailing School and Junior Race Team.....	35
Summer Sailing School.....	35
Seattle Yacht Club Junior Race Team.....	36
Northwest Youth Race Circuit Schedule 2025.....	36
Tuesday Night Sailing and Dinner on the Lawn.....	37
Adult Sailing Courses.....	38
The Small Boat Fleet.....	38
Sailing Office Staff.....	40
2024 Season Awards and Recognition.....	41
Junior Sailing Awards.....	41
Outstanding Achievement in Sailing.....	41
Leadership Team.....	42
Sailing Program Contacts.....	43

# Welcome to the 2025 Sailing Season

Welcome to Seattle Yacht Club's Sailing community, where we support sailing activities from beginning sailing to big-boat regattas. We have a wide variety of events, including a Sailing School for sailors 7 to 17 years old, and a series of fun winter and summer cruises for SYC members to participate in. If you want to be part of the open sailboat racing, we have Junior Race Team, as well as racing on Puget sound, starting off with the Tri-Island series, Mark Mayer Opening Day Race, The Ludlow Double Dipper and Grand Prix Regatta as the Premier Racing Event in the PNW. Other events include:

- **Fleet Cruises** (January through May), provide a fun way to meet members and visit nearby cruising destinations.
- **Monthly Fleet Dinners** (about 8 per year) provide informative and entertaining programs for power and sail boaters.
- **Cruise and Snooze Regattas** offer a way for beginners to try racing and experienced racers to compete in family friendly fun races with dinner, games, and socializing at the Port Madison outstation.
- **NORPAC** cruise and fun races to Barkley Sound (even years)
- **Commodores Cruise** and fun races starting at the Henry Island outstation, continuing into Canadian Gulf Islands (odd years)
- **Mini 12** racing on Portage Bay with the most active fleet in the PNW.
- **T-37 radio controlled model racing.** For more information, contact Bob Brown at [boatingbob@comcast.net](mailto:boatingbob@comcast.net)
- **J/22 racing** year-round offering formal match/team racing, frostbite racing, and informal fun sailing. For more information, contact Lou Phillips at [i14ner@yahoo.com](mailto:i14ner@yahoo.com)
- **Tuesday Night Sailing and Dinner on the Lawn** (summer) is a chance to take out one of our small boats, try racing or honing your skills, and come back ashore for buffet dinner and games on the lawn. Our Sailing School Instructors are available to help you get signed in, rigged, launched, and back, as well as setting up races.

Come out and join in the fun. If you are new introduce yourself to me or any of our committee members - we welcome you and can help you get started!

Tom Leonard  
Fleet Captain - Sail

# 2025 Race and Events Calendar

## JANUARY

- 4 Sr. Sail Meeting
- 6-7 Winter Cruise-Port  
Madison
- 11 Fleet Dinner
- 27 J/22 Mid-Winter Frostbite

## FEBRUARY

- 6 Sr. Sail Meeting
- 8-9 Winter Cruise-Bremerton
- 13 Fleet Dinner
- 15 J/22 I ♥ Sailing Frostbite

## MARCH

- 1-2
- 6 Sr. Sail Meeting
- 13 Fleet Dinner
- 15 J/22 St. Patrick's Day  
Frostbite

## APRIL

- 3 Sr. Sail Meeting
- 5-6 Star & Bar Match Race #1
- 5-6 Winter Cruise-Kingston.
- 11 Fleet Dinner
- 19 SYC Womens  
Championship
- 26-27 Protection Island Race -  
T.I. #1

## MAY

- 3 Opening Day
- 4 Mark Mayer Race
- 1 Sr. Sail Meeting
- 8 Fleet Dinner
- 10 Vashon Island Race T.I. #2
- 25-27 Mini-Cruise Poulsbo
- 31 Blake Island T.I. #3

## JUNE

- 5 Sr. Sail Meeting
- 14-15 Star & Bar Match Race #2
- 24 Tuesday Night Sailing
- 21-22 Cruise n Snooze A/B

## JULY

- 4 4<sup>th</sup> of July Dock Party at  
SYC Mainstation
- 8,15,22,29 Tuesday Night Sailing
- 20-25 Commodore's Cruise

## AUGUST

- 5,12,19,26 Tuesday Night Sailing
- 16-17 Star & Bar Match Race #3
- 23-24 PNW Junior Olympics

## SEPTEMBER

- 4 Sr. Sail Meeting
- 6-7 Star & Bar M.R. Finals
- 11 Fleet Dinner
- 13-14 Cruise & Snooze C/D

## OCTOBER

- 2 Sr. Sail Meeting
- 9 Fleet Dinner
- 24-26 Grand Prix XLVIII

## NOVEMBER

- 1-2 Club Championship
- 6 Sr. Sail Meeting
- 21 Sailboat Awards Dinner
- 28 J/22 Blue Friday Frostbite

## DECEMBER

- 4 Sr. Sail Business Meeting
- 11 Fleet Gift Exchange
- 31 J/22 New Year's Frostbite

# Race Registration Procedure

## Online Registration

Online race registration is available from the Seattle Yacht Club website at [www.SeattleYachtClub.org/Regattas](http://www.SeattleYachtClub.org/Regattas)

## Registration Deadlines

Registrations must be submitted online or received by Seattle Yacht Club by midnight on the entry deadline for each race. The deadline is typically midnight on the Wednesday preceding the race unless otherwise indicated in the Notice of Race. Registrations accepted at the discretion of the race committee after the deadline will be assessed a \$30 late fee.

## Tri-Island Package

A reduced Series Fee package is available for the Tri-Island Series. The deadline for the Series package is the first race in the series.

Contact: For registration issues, please contact the Seattle Yacht Club Sailing Director, Brian Ledbetter, in the SYC Sailing Office.

Phone: 206.926.1011. Email: [brianl@seattleyachtclub.org](mailto:brianl@seattleyachtclub.org)



High School Sailing Championships on Lake Union.

## 2025 Registration Checklist

Date	Event	Includes Cruiser/Racer Division	Entry Fee	Deadline	Enter
Apr 19	<b>Womens Club Champs-J22</b>	No	\$50	Apr 17	<input type="checkbox"/>
(3 events)	<b>Tri-Island Series Package</b>	Yes	\$250	April 23	<input type="checkbox"/>
April 26-27	<b>Protection Island Race (Tri-Island #1)</b>	Yes	\$90 <sup>1</sup>	April 23	<input type="checkbox"/>
May 4	<b>Mark Mayer Opening Day Race</b>	Yes	Free!!	May 3	<input type="checkbox"/>
May 10	<b>Vashon Island Race (Tri-Island #2)</b>	Yes	\$90 <sup>1</sup>	May 7	<input type="checkbox"/>
May 31	<b>Blake Island Race (Tri-Island #3)</b>	Yes	\$90 <sup>1</sup>	May 28	<input type="checkbox"/>
June 21-22	<b>Cruise &amp; Snooze A/B*</b>	Yes	\$75	June 19	<input type="checkbox"/>
Aug 23-24	<b>PNW Junior Olympics</b>	No	\$75	Aug 23	<input type="checkbox"/>
Sept 13-14	<b>Cruise &amp; Snooze C/D*</b>	Yes	\$75	Sept 11	<input type="checkbox"/>
Oct 24-26	<b>Grand Prix XLVI</b> Boats under 30' 30' to under 40' 40' and over	No	\$215 \$285 \$355	Oct 22	<input type="checkbox"/>
Nov 1-2	<b>Open Club Champs - J22</b>	No	\$50	Oct 30	<input type="checkbox"/>

**Register early and build your class!!**

<sup>1</sup> Tri-Island Series Package (Protection, Vashon, and Blake Island Races) is available for \$250.

<sup>2</sup> Registrations received after deadline date, (typically Wednesday midnight before event), may be assessed a \$30 late fee.

\*Cruise and Snooze and Commodores Cruise require Seattle Yacht Club membership for outstation moorage.

# Racing Program

With events ranging from one-design championships to the longer-distance Tri-Island races, Seattle Yacht Club actively promotes a variety of racing here in the great Pacific Northwest. In this section:

- Overview of Sailboat Racing Events
- SYC General Notice of Race
- Smith Island Race
- Mark Mayer Race
- Vashon Island Race
- Blake Island Race
- Northwest Junior Olympics Regatta
- Grand Prix XLVIII Regatta
- Club Championship Regatta
- Jr. Club Championship

## Overview of Sailboat Racing Events

### Hosted and Away Regattas

Each year we look for a regional or national regatta to host locally, or we send a team to a major event hosted outside our area, such as the Lipton Cup or Invitational Cup.

### Tri-Island Series

The Tri-Island series continues the tradition of offering longer courses to test your stamina and strategic knowledge of Puget Sound. The series award party will be held at the **Seattle Yacht Club - Elliott Bay Clubhouse** after the Blake Island Race. A shorter Cruiser/Racer course will be offered for each race.

#### Smith (or) Protection Island Race

Alternating between Smith Island in even years, and Protection Island in odd years, these courses are our longest races for the year, with several challenging decision points and the opportunity to experience more wind, waves, and current conditions than normal.

#### Vashon Island Race

The Vashon Island course is one of the most popular races, with several distinct racing phases. Get ahead and go for a breakaway, or, if not so fortunate, hope to bring the wind to your competitors waiting at the next corner. These tactical courses will take you south with scenic views of Elliott Bay and Mt. Rainier.

#### Blake Island Race

Whether you are testing your mettle or rolling the dice, *you* select which way to round Blake Island. Finish off Elliott Bay Marina with Tri-Island Series Awards Party at the Seattle Yacht Club Elliott Bay Outstation.



## **Mark Mayer Opening Day Race**

The Mark Mayer Race is Sunday at the crack of noon on Opening Day weekend. The course is just north of the Evergreen Point Bridge on Lake Washington. A post-race party will be at the Seattle Yacht Club Portage Bay clubhouse.

**The Mark Mayer Race and party are free!**

## **Ludlow Double Dipper Race**

A single or double-handed race to Pt Ludlow, with a race to Pt. Ludlow on Saturday, and an overnight stay at Pt. Ludlow Marina, and return with a race on Sunday.

## **Annual Grand Prix Regatta**

This is an open regatta and all racing boats in Puget Sound are invited.

The season's racing activities culminate with the Grand Prix Regatta. ORC, PHRF and One-design fleets are welcome to register now! Grand Prix is a mix of buoy racing and longer middle-distance races held over a three-day period with parties every evening.

Racing begins on Friday afternoon with a 1PM start for all classes.

There are no Cruiser-Racer classes in Grand Prix.

## **Club Championship Regatta**

Open to Seattle Yacht Club members. Sailed in SYC J-22s in a round-robin format of multiple buoy races to determine the Club Champion!



# SYC General Notice of Race

This section of the Notice of Race applies to all SYC Races identified in this Race Book. It addresses common items that are incorporated into the event-specific Notice of Race for each event. If a Notice of Race and the SYC Notice of Race Addendum are in conflict, the Notice of Race shall have precedence. The organizing authority is the Seattle Yacht Club.

## 1 Rules

- 1.1 This regatta will be governed by the rules as defined in the Racing Rules of Sailing (RRS).
- 1.2 The prescriptions of US Sailing to the following rules shall apply: RRS 25.1, 32, 34, 60.3, 61.4, 63.1, 63.2, 63.4, 64.4(b), 67, 70.5(a), 76.1, 81, 86.3, 88.2, Appendix G and R. The text of these prescriptions is available from the US Sailing website at [Prescriptions](#).
- 1.3 Other changes to the rules may be noted elsewhere in the Notice of Race or Sailing Instructions.
- 1.4 Changes to the Notice of Race will be available from the Seattle Yacht Club website at [Regattas](#) or, if not available from the website, on the notice board at the Seattle Yacht Club south entrance.

## 2 Eligibility and Entry

- 2.1 Entrants must register online at [Regattas](#), or by form delivered to Seattle Yacht Club, and pay appropriate fees by the registration deadline. Registration after the deadline may be accepted at the discretion of the organizing authority and may require an additional late fee.
- 2.2 A boat wishing to use sails with identification different from her own must receive permission from the organizing authority by the registration deadline or when her late registration is accepted. This changes RRS 77.
- 2.3 A boat racing in a handicap class must ensure that her correct rating is issued and recorded by the class organization by the registration deadline or when her late registration is accepted. Boats participating without a valid class certificate will not be entered or scored and her entry fee may not be refunded. There may be exceptions to this rule in the Cruiser/Racer Class.
- 2.4 A change in a boat's handicap class rating will take effect on the day it is recorded by the class organization. Changes are not retroactive. When a boat's rating changes between races that are part of a series, the boat shall remain in the same class in which she started the series.
- 2.5 A boat rated by her handicap class in consideration of water ballast may use water ballast as rated. This changes RRS 51.

## 3 Risk Statement - Operating and Equipment Requirements

- 3.1 Sailing is an activity that has an inherent risk of damage and injury. Competitors in this event are participating entirely at their own risk. See RRS 3, Decision to Race. The responsibility for a boat's decision to participate in a race or to continue racing is her's alone. The race organizers (organizing authority, race committee, protest committee, host club, sponsors, or any other organization or official) will

not be responsible for damage to any boat or other property or the injury to any competitor, including death, sustained as a result of participation in this event. By participating in this event, each competitor agrees to release the race organizers from any and all liability associated with such competitor's participation in this event to the fullest extent permitted by law.

- 3.2 Boats designated in the specific Notice of Race must comply with the equipment requirements of the World Sailing Offshore Special Regulations (OSR) as designated for each race.
- 3.3 Boats must comply with U.S. Coast Guard regulations.
- 3.4 Boats must be operated in accordance with the Puget Sound Sailboat Safety Regulations, available in the appendix of this Race Book.
- 3.5 The technical committee may inspect a boat any time before or after racing for compliance with requirements.

#### **4 Scoring**

- 4.1 The time limit is the maximum allowable time from each boat's starting signal to her finish time or a time of day. Boats that do not finish within their time limit, or do not report a halfway time as designated for the Tri-Island series, will be scored Did Not Finish (DNF). This changes RRS 35.
- 4.2 A boat that did not start (DNC, DNS, OCS), did not finish (DNF), retired (RET), or is disqualified (DSQ, DNE, DGM, BFD, NSC) will be scored the number of finishers plus one. This changes RRS A5.2 and A9.
- 5 Sailing Instructions will be available by the Thursday before the first race from the Seattle Yacht Club website at [Regattas](#) and on the Official Notice Board at the Seattle Yacht Club Portage Bay clubhouse south entrance.

## Puget Sound Sailboat Safety Regulations

2016 Revision as adopted by the Shilshole Bay, Sloop Tavern, Corinthian of Seattle, and Seattle Yacht Club

We share Puget Sound with its commercial traffic, including many deep-water vessels and tows. It is sobering to note that, if your boat is one mile dead-ahead of a freighter coming down the Sound at normal speed, and the freighter's helm is put hard over to avoid you, the freighter's bow will miss you, but her stern will not! Obviously, this implies that early and decisive action is required to keep your boat out of the path of a large oncoming vessel or tow.

1. Yachts must not sail across a tow line, too close ahead, or too close alongside of commercial traffic. Deep water vessels have limited ability to change course and speed. Barges under tow can yaw unexpectedly well out to the side at speeds essentially the same as they are being towed. Yachts should not pass less than one mile ahead and 1/4 mile to the side of large vessels.
2. Rule 10 of the International and Inland Rules to Prevent Collisions at Sea (COLREGS) requires that no power-driven vessel less than 20 meters (66 feet) in length, and no sailing vessel (of any size) may impede the safe passage of a power-driven vessel in a VTS lane.
3. Rule 9 of the COLREGS requires that no power vessel of less than 20 meters (66 feet) in length and no sailing vessel (of any length) shall impede the safe passage of any vessel which can navigate only within a narrow channel or fairway. Puget Sound can be considered a "narrow channel" for most large commercial traffic. "Impede" means to cause to alter speed or course or to take evasive action.
4. A boat may use its propulsion engine as described in RRS 42.3(i) for any purpose described in 42.3(h), or to stay clear of a vessel not participating in the race. The use of a propulsion engine shall be reported to the Race Committee with the reason for the use and description of any benefit to the boat's position resulting from said use.
5. Navigation lights must be shown between sunset and sunrise as required by the International Rules of the Road.
6. Observed and/or reported violations of the safety regulations may be protested. The Race Committee shall have the option of issuing a "warning" when deemed appropriate. Warnings are recorded and may be considered when judging any future reports.



Save the Orcas

## Puget Sound Orca Safety Regulations

### U.S. Coast Guard Advisory

The U.S. Coast Guard has requested that you be aware of Washington State Law RCW 77.15.740 which makes it **illegal** to:

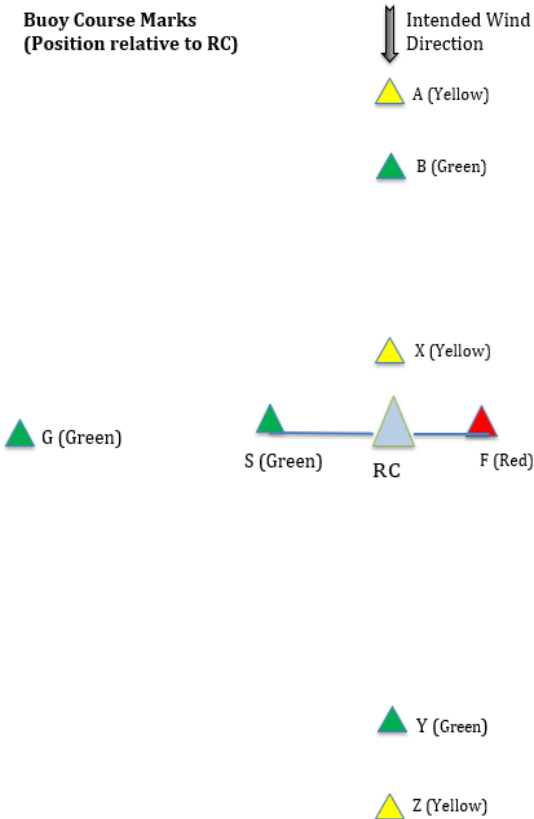
1. Cause a vessel or other object to approach, in any manner, within three hundred yards of a resident orca whale.
2. Position a vessel to be in the path of a southern resident orca whale at any point located within four hundred yards of the whale. This includes intercepting a southern resident orca whale by positioning a vessel so that the prevailing wind or water current carries the vessel into the path of the whale at any point located within four hundred yards of the whale.
3. Fail to disengage the transmission of a vessel that is within two hundred yards of a southern resident orca whale; or
4. Feed a southern resident orca whale.



Sailors at Jr. Olympics avoid feeding the Orcas!

## Buoy Course Marks (position relative to R/C)

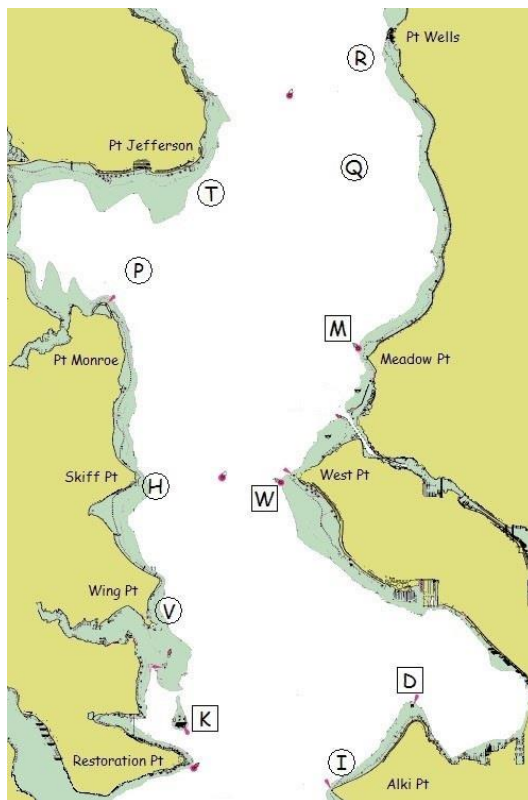
Please note that the Sailing Instructions for a particular race may use modified or different mark descriptions than described here.



The course diagram for buoy course marks shows the general orientation of the Race Committee signal boat "R/C", other marks, (identified by the letters S, A, B, G, X, Y, Z and F), and the intended wind direction. All marks other than the race committee signal boat are inflatable buoys. Positions are approximate, and the diagram is not to scale.

S When a starting mark is for a downwind start, it may be on either side of the race committee boat.

## Geographic Marks (position based on location)



Bearings are magnetic. Distances are nautical miles (NM). Bearings, distances, and positions are approximate. Each temporary mark is shown with its label in a circle. Each permanent mark is near its label in a square box.

- D Duwamish Head Lt. (LL #16910)
- H Temporary mark 0.3 NM E of Skiff Pt.
- I Temporary mark 0.5 NM N of Alki Pt.
- K Blakely Rock (LL #16830)
- M Meadow Pt. Buoy (LL #16765)
- P Temporary mark 0.75 NM NNE of Pt. Monroe
- Q Temporary mark 3.0 NM bearing 340° from Meadow Pt. Buoy
- R Temporary mark 0.5 NM SW of Pt. Wells
- T Temporary mark 0.5 NM SE of Pt. Jefferson
- V Temporary mark 0.3 NM NNE of Wing Pt.
- W West Pt. Buoy (LL #16805)



## **Notice of Race**

### **Mark Mayer Opening Day Race**

**Date:** May 4, 2025 (Sunday)

**Location:** Lake Washington north of the SR-520 Bridge. The start and finish will be in the area between Webster Point, Hunts Point, and Sand Point.

**Course:** The courses will be as designated in the Sailing Instructions.

**Time of First Warning:** 1200

**Time Limit:** 5 hours

**Classes to Race:** ORC, IRC, PHRF-NW, or One-Design or other classes of at least five boats may apply.

**Equipment Requirement Category:** OSR Inshore, One-design classes shall comply with their class rules.

**Other Provisions:**

-Notice of Race as amended by SYC Notice of Race Addendum.

**Awards:** 1<sup>st</sup>, 2<sup>nd</sup>, and 3<sup>rd</sup> place in class, plus other awards as deemed necessary!

**Social Activities:** Party immediately after the race at Seattle Yacht Club in the Heritage Room and/or on the adjacent lawn.

**Registration Deadline:** 6 pm, May 3, 2025 (Saturday)

**Registration Fee:** Free!

**Regatta Chairpersons:** Christina Travis / Lucy Joel  
ChristinaT@SeattleYachtClub.org



**Race Committee Boat - *Portage Bay***

# SYC Protection Island Race - Tri-Island #1

## Notice of Race

**Date:** April 26-27, 2025 (Saturday-Sunday)

**Location:** Northern Puget Sound, Admiralty Inlet, and southeastern Straits of Juan de Fuca. The starting line and finishing line will be in Shilshole Bay near Meadow Point.

**Course:**

Long Course: Start by leaving the starting mark buoy to port, round Protection Island to starboard, and finish as described in the Sailing Instructions.

Short Course: Start by leaving the starting mark to port, round Double Bluff Lighted Buoy 1 (LL #16525) to port, and finish at the Race Committee boat as described in the Sailing Instructions.

Sport Boat Course: Same as short course (scored separately).

Cruiser/Racer Course:

Start by leaving the starting mark to port, round **Scatchet Head Lighted Gong Buoy (LL#16555)** to port, and finish at the Race Committee boat as described in the Sailing Instructions.

**Time of First Warning:** 0900

**Time Limits:**

Long Course: 30 hours

Short Course / Sport Boat Course: 14 hours

Cruiser/Racer Course: 9 hours

**Classes to Race:** ORC, IRC, PHRF-NW, including Cruiser/Racer, and one-design keelboat. Other classes of at least five boats may apply.

**Equipment Requirement Category:**

**Long Course:** OSR 3

**Short Course/Sport Boat Course:** OSR 4

**Cruiser/Racer Course:** OSR 4

**Other Provisions:**

- Notice of Race amended by the SYC General Notice of Race.
- The short course is available to boats rating 75 and slower. The Sport Boat course is open to boats 33 feet or less rating faster than 75.
- A shortened-course option will be available for boats that take their time at a designated shortened-course option finishing line. Boats using the shortened-course option will be considered finishers and will be scored in

class and overall based on their time and the distance for the shortened course starting immediately behind boats finishing the full course.

- This race is part of the SYC Tri-Island Series. There will be no scoring exclusions for the series.
- Boats with an Automated Identification System (AIS) shall broadcast their position.
- Boats shall monitor the race committee VHF communication channel that is published in the Sailing Instructions at all times while in the racing area before starting and while racing. If a boat fails to respond to a hail from a vessel or Vessel Traffic Services (VTS), the Race Committee may score the boat DSQ without a hearing. This changes RRS A5.1.

**Awards:** 1<sup>st</sup> overall on each course. For the Tri-Island Series, 1<sup>st</sup> overall per course and 1<sup>st</sup>, 2<sup>nd</sup>, 3<sup>rd</sup> in class. Awards will be presented at the awards party.

### **Series Awards Party**

The Tri-Island Series Awards Party after the Blake Island Race on May 31st will be at the **Seattle Yacht Club Elliott Bay Outstation** at Elliott Bay Marina from 4 to 8 PM. Trophies will be awarded around 6pm.

**Registration Deadline:** April 23, 2025 (Wednesday)

**Registration Fee:** **\$90 per race (or \$250 for SYC Tri-Island Series)**

**Regatta Chair:** Christina Travis, [ChristinaT@SeattleYachtClub.org](mailto:ChristinaT@SeattleYachtClub.org)



**Glory and Zvi dueling it out at Grand Prix Regatta**

# Vashon Island Race - Tri-Island #2

## Notice of Race

**Date:** May 10, 2025 (Saturday)

**Location:** Puget Sound. The starting line and finishing line will be in Shilshole Bay between Meadow Point and West Point.

**Course:**

Long Course: Start by leaving the starting mark buoy to port, round Maury Island and Vashon Island to starboard, and finish as described in the Sailing Instructions.

Short Course: Start by leaving the starting mark buoy to port, round a temporary buoy north of Point Robinson at approximately 47° 24.0' N, 122° 23.0' W (47.400N 122.383W) to port and finish as described in the Sailing Instructions.

Sport Boat Course: Same as short course (scored separately).

Cruiser/Racer Course: Start by leaving the starting mark buoy to port, round Blakely Rock (LL #16830) "K" to port. Round Duwamish Head Lt. (LL #16910) "D" to port and finish as described in the Sailing Instructions.

**Time of First Warning:** 0900

**Time Limit:**

Long Course: 19 hours

Short Course / Sport Boat Course: 14 hours

Cruiser/Racer Course: 9 hours

**Classes to Race:** ORC, PHRF-NW, including Cruiser/Racer, and one-design keelboat. Other classes of at least five boats may apply.

**Equipment Requirement Category**

**Long Course:** OSR 4

**Short Course / Sport Boat Course:** OSR 4

**Cruiser/Racer Course:** OSR 4

**Other Provisions:**

- Notice of Race amended by SYC Notice of Race Addendum.
- The Short Course is available to boats rating 75 PHRF and slower. The Sport Boat Class on the short course is open to boats 33 feet and less rating faster than 75.
- A shortened-course option will be available for boats that take their time at a designated shortened-course option finishing line. Boats using this option will be considered finishers, and will be scored in class and overall based on their time and the distance for the shortened-course placing immediately behind boats finishing the full course.
- This race is part of the SYC Tri-Island Series. There will be no scoring exclusions for the series.

- Boats with an Automated Identification System (AIS) shall broadcast their position.
- Boats shall monitor the race committee VHF communication channel, as published in the Sailing Instructions, at all times while in the racing area before starting and while racing. If a boat fails to respond to a hail from a vessel or Vessel Traffic Services (VTS), the Race Committee may score the boat DSQ without a hearing. This changes RRS A5.1
- **Awards:** 1<sup>st</sup> overall on each course. For the Tri-Island Series, 1<sup>st</sup> overall per course and 1<sup>st</sup>, 2<sup>nd</sup>, 3<sup>rd</sup> in class. Awards will be presented at the awards party.

### **Series Awards Party**

The Tri-Island Series Awards Party after the Blake Island Race on May 31st will be at the **Seattle Yacht Club Elliott Bay Outstation** at Elliott Bay Marina from 4 to 8 PM. Trophies will be awarded around 6pm.

**Registration Deadline:** May 7, 2025 (Wednesday)

**Registration Fee: \$90 (\$250 for SYC Tri-Island Series package)**

**Regatta Chair:** Christina Travis, [ChristinaT@SeattleYachtClub.org](mailto:ChristinaT@SeattleYachtClub.org)



Tri-Island Series consist of three distance races of varying lengths. Trophies are awarded for individual race winners by class, and overall champions for each course, including a Cruiser/ Racer division.

# **Blake Island Race - Tri-Island #3**

## **Notice of Race**

**Date:** June 1, 2024 (Saturday)

**Location** Puget Sound. The starting line will be in Shilshole Bay between Meadow Point and West Point. The finishing line will be in the north part of Elliott Bay off the Elliott Bay Marina breakwater.

### **Course:**

Long Course: Start by leaving the starting mark buoy to port, round Blake Island to port or starboard, round a temporary mark approximately 0.3 NM S of West Point Lighted Buoy 1 (LL #16805) at approximately 47° 39.3' N, 122° 26.4' W (47.655N 122.440W) to starboard, and finish as described in the Sailing Instructions.

Short Course: Same as long course.

Sport Boat Course: Same as long course (scored separately).

Cruiser/Racer Course: Start by leaving the starting mark buoy to port, round Blakely Rock ("K") to port, round a temporary mark approximately 0.3 NM S of West Point Lighted Buoy 1 (LL #16805) at approximately 47° 39.3' N, 122° 26.4' W (47.655N 122.440W) to starboard, and finish as described in the Sailing Instructions.

**Time of First Warning:** 0900

### **Time Limits:**

Long Course: Earlier of 8 hours or 1900

Short Course / Sport Boat Course: Earlier of 8 hours or 1900

Cruiser/Racer Class Course: Earlier of 8 hours or 1900

**Classes to Race:** ORC, PHRF-NW, including Cruiser/Racer, and one-design keelboat. Other classes of at least five boats may apply.

**Equipment Requirement Category:** OSR 4

### **Other Provisions:**

- Notice of Race amended by SYC Notice of Race Addendum.
- The Short Course is available to boats rating 75 PHRF and slower. The Sport Boat Class on the short course is open to boats 33 feet and less rating faster than 75.
- A shortened-course option will be available for boats that take their time at a designated shortened-course option finishing line. Boats using the shortened-course option will be considered finishers and will be scored in class and overall based on their time and the distance for the shortened-course starting immediately behind boats finishing the full course.
- This race is part of the SYC Tri-Island Series. There will be no scoring exclusions for the series.
- Boats with an Automated Identification System (AIS) shall broadcast their position.

- Boats shall monitor the race committee VHF communication channel, as published in the Sailing Instructions, at all times while in the racing area before starting and while racing. If a boat fails to respond to a hail from a vessel or Vessel Traffic Services (VTS), the Race Committee may score the boat DSQ without a hearing. This changes RRS A5.1

**Awards:** 1<sup>st</sup> overall on each course. For the Tri-Island Series, 1<sup>st</sup> overall per course and 1<sup>st</sup>, 2<sup>nd</sup>, 3<sup>rd</sup> in class. Awards will be presented at the awards party.

### **Series Awards Party**

The Tri-Island Series Awards Party after the Blake Island Race on May 31st will be at the **Seattle Yacht Club Elliott Bay Outstation** at Elliott Bay Marina from 4 to 8 PM. Trophies will be awarded around 6pm.

**Registration Deadline:** May 28, 2025 (Wednesday)

**Registration Fee:** \$90 per race (\$250 for SYC Tri-Island Series package)

**Regatta Chair:** Christina Travis, [ChristinaT@SeattleYachtClub.org](mailto:ChristinaT@SeattleYachtClub.org)



Annual Tri-Island Series Party at the Elliott Bay Marina clubhouse, following the Blake Island Race.





# Race Information - Grand Prix XLVIII

*Note: This is an informal announcement, not a Notice of Race, and is not part of the rules of the event. For more information, please see the Notice of Race at [www.seattleyachtclub.org/regattas](http://www.seattleyachtclub.org/regattas).*

**Dates:** October 24-26, 2025 (Friday, Saturday, and Sunday)

**Location:** The racing area is Puget Sound north of Alki Pt. and south of Pt. Wells. The starting line will be in the vicinity of Shilshole Bay or north of Meadow Point.

**Course:** The racing will be a mix of long buoy races, or middle-distance point to point races. One or more buoy or mid-distance races may be sailed each day, based on wind conditions. The courses will be as designated in the Sailing Instructions.

## **Scheduled Time of First Warning:**

Friday: 1300

Saturday and Sunday: 1030

**Classes to Race:** IRC, ORC, PHRF-NW and One-Design Fleets of keelboats of at least 24 feet with at least five boats. Other classes may apply at the discretion of the organizing authority. Monohulls and multihulls will race in separate classes. No Cruiser-Racers.

**Equipment Requirement Category:** OSR 4, and One-design classes shall comply with their class rules.

## **Other Provisions:**

- Permanent trophy recognition will be awarded for each class.
- The race committee will have on-the-water discretion to run one or more races each day with a fun mix of distance and buoy races.
- Vessels equipped with an Automated Identification System (AIS) shall broadcast their position.

**Awards:** 1<sup>st</sup>, 2<sup>nd</sup>, and 3<sup>rd</sup> place in class

## **Social Activities**

There will be parties after Friday and Saturday racing at Corinthian YC at Shilshole. The awards dinner will be after racing on Sunday at the Seattle Yacht Club.

**Registration Deadline:** October 22, 2025 (Wednesday)

## **Registration Fee (based on boat length):**

Under 30': \$215

30' to under 40': \$285

40' and over: \$355

**Regatta Chair:** Brian Ledbetter, [BrianL@SeattleYachtClub.org](mailto:BrianL@SeattleYachtClub.org)

# Club Championship Regatta

## November 1-2, 2025

### Notice of Race

#### 1. Rules

- 1.1. The event is governed by the rules as defined in The Racing Rules of Sailing.
- 1.2. J-22 Class rules will not be enforced except for 8.9, Total crew weight (in swim wear) that exceeds 275 kgs (the total number of crew is optional)
- 1.3. The regatta will be run on SYC's matched J-22s
  - 1.3.1. No adjustments to the standing rigging may be made at any time before or during the regatta other than by SYC staff or regatta officials
  - 1.3.2. All equipment provided for the safe operation of a J-22 must be carried during the regatta
- 1.4. PFDs must be worn while aboard an SYC J-22
- 1.5. Notice of Race as amended by SYC Notice of Race Addendum.
- 1.6. State and County COVID-19 regulations as appropriate

#### 2. Sailing Instructions

- 2.1. The sailing instructions (SIs) will be available during the last two weeks prior to event on [seattleyachtclub.org/regattas](http://seattleyachtclub.org/regattas)

#### 3. Communications

- 3.1. The official notice board is [seattleyachtclub.org/regattas](http://seattleyachtclub.org/regattas). Notices may be posted on the notice board located outside the south entrance of the SYC Mainstation
- 3.2. All boats shall carry a VHF radio, and if a competitor does not have a VHF radio one will be provided by SYC
- 3.3. On the water, the race committee will make courtesy broadcasts to competitors on VHF radio. The channel will be stated in the Sailing Instructions.

#### 4. Eligibility and Entry

- 4.1. This regatta is open to all SYC members
- 4.2. All participants must be SYC members
- 4.3. Competitors shall form their own crews for the regatta
- 4.4. Competitors may enter the event by reserving their J-22 on [seattleyachtclub.org/group/pages/j22-fleet-reservation](http://seattleyachtclub.org/group/pages/j22-fleet-reservation) for the days of the regatta, October 30 and 31 at any time prior to October 30, 2021

- 4.4.1. If more than 6 competitors wish to enter the regatta this NOR document shall be amended with an equitable process for the registration of all competitors as well as an equitable process for exchanging boats during the regatta

## 5. Scoring

- 5.1. Scoring will follow RRS Appendix A
- 5.2. One race will constitute a series
- 5.3. A boat's series score shall be the total of her race scores. There will be no throw-outs.

## 6. Risk Statement

- 6.1. RRS 3 states: 'The responsibility for a boat's decision to participate in a race or to continue to race is hers alone.' By participating in this event each competitor agrees and acknowledges that sailing is a potentially dangerous activity with inherent risks. These risks include strong winds and rough seas, sudden changes in weather, failure of equipment, boat handling errors, poor seamanship by other boats, loss of balance on an unstable platform and fatigue resulting in increased risk of injury.  
**Inherent in the sport of sailing is the risk of permanent, catastrophic injury or death by drowning, trauma, hypothermia or other causes**

## 7. Prizes

- 7.1. Prizes will be given for 1<sup>st</sup>, 2<sup>nd</sup>, and 3<sup>rd</sup> place, plus other awards as deemed necessary!!
- 7.2. Please note that when the Club Championship is held in the Fall prior to a "Suma Year" (every third year) 1<sup>st</sup>, 2<sup>nd</sup>, and 3<sup>rd</sup> place competitors will be awarded the honor of representing the SYC in the Takarabune Regatta (usually held during the first week of May)
- 7.3. Party immediately after racing at Seattle Yacht Club

## 8. Further Information

- 8.1. For further information please contact  
Liz Wilder - [liz67206@gmail.com](mailto:liz67206@gmail.com)  
Lou Phillips - [i14ner@yahoo.com](mailto:i14ner@yahoo.com)  
Ed Snyders - [esnyders@yahoo.com](mailto:esnyders@yahoo.com)

## **2025 Clean Regatta Goal**

As Northwest sailors, we share a love of the Salish Sea and a desire to minimize the environmental impact of our events to protect and preserve this beautiful place where we race and cruise our boats. Beginning in 2023, Seattle Yacht Club is adopting the Clean Regattas Toolkit from the Sailors for the Sea organization. Our goal is to run all SYC regattas and events at the gold or platinum certification level

The Clean Regattas program (<https://www.sailorsforthesea.org/programs/clean-regattas>) is the world's leading sustainability certification for all on-the-water events. Since the program's inception in 2006, over 3,000 events have shown their commitments to sustainability by becoming Clean Regattas, reaching nearly 800,000 sailors and attendees in 50 countries.

Seattle Yacht Club racing program has already taken steps to operate more sustainably, like reducing single use plastic bottles, and increasing recycling and composting. Adopting the Clean Regatta Toolkit, making additional changes and reporting on these actions for regattas in 2023 will help set a standard for sustainable race operations and raise awareness among the sailors of what they can do to preserve and protect our land and waters of the PNW. More specific details will be included in the notice of race and/or the sailing instructions for each event.



# 2025 Sailing Programs Information

J/22 on Lake Washington

## J/22 Sailboat Fleet

Members of the Seattle Yacht Club have access to a fleet of six J/22 sailboats, which are limited to day-sailing use on the fresh-water side of the locks. The boats can be used for organized events, such as Team Racing, Match Racing, Frostbite Racing, Women's Group Evening Sailing, Duck Dodge racing, Mark Mayer Opening Day Race, or for a casual afternoon sail on a beautiful day.

### Want to get involved?

The J/22 Committee is currently looking for Boat Captains for each of the boats, and also for members to help with boat maintenance.

### Please contact Fleet Captains:

Tom Leonard      [Tom@damskovconstruction.com](mailto:Tom@damskovconstruction.com)

Doug Bourlier     [Doug.Bourlier@hotmail.com](mailto:Doug.Bourlier@hotmail.com)

These boats are stored in the water, easily rigged, and ready for your day-sailing adventures!

**All Day Use:** \$30 per use\*

### Ready to go Sailing?

-Before you can reserve a sailboat, please make an appointment with the Sailing Office to become an approved user and fill out a J/22 waiver.

-Upon passing the skills check and test sail and filling out paperwork, you will be listed on the "Approved User" list at the Front Desk.

-Reservations are first-come, first-served. The approved member **MUST** be present on the boat during use. All guests must fill out appropriate waiver forms upon arrival.

-Approved Users **MUST** be Seattle Yacht Club Members and at least 18 years of age.

-Approved Users can reserve the boats online by using the J/22 Reservations page, or by calling the Front Desk of The Seattle Yacht Club, 206.325.1000.

## Mini 12 Fleet

With twenty active boats and over 175 races every year, the Seattle Yacht Club Deception Class Mini-12 Fleet is one of the most active One-Design fleets in the Pacific Northwest!

The Deception Class Mini-12, built in Victoria B.C., is a 13' sloop designed by two Royal Victoria Yacht Club members to about one-fifth the scale of the 1980's America's Cup yachts. We have forty members as individual boat owners or in boat

partnerships, which is a practical way to keep the costs down and get all the boats out for the regattas.

Every year we have seven series consisting of five regattas each. And with our friends at Royal Victoria Yacht Club and their ten boats, our two clubs alternate as host for an annual Inter-Club Team Race Regatta.



Mini-12's rail-to-rail racing on Portage Bay!

No regattas are held in July and August; to accommodate our members who leave town for skiing, cruising or golfing, we score our Fleet Championship using their best five series. Each of our ownership's teams will act as race committee for about two regattas per year.

The Mini-12's are moored on yard trailers aboard two barges at the inshore end of Dock 3 at SYC. These barges are equipped with an electric hoist to make launching and recovery easy. Take a close look at the boats and picture getting out racing on Portage Bay as captain and crew! The Mini-12 fleet is a great place to get started in your sailing career and learn from many of the region's finest and most experienced sailors.

Contact Fleet Captain Bill Boyeson ([j.boyeson@frontier.com](mailto:j.boyeson@frontier.com)) to come out for a sail.



## SYC Mini-12 Class 2025 Schedule

Date	Day	Time	Event	Race Committee
<b>JANUARY</b>				
1/5	Sunday	2:00	No Racing, Happy New Year !!	
1/12	Sunday	2:00	Series C Regatta 4	USA 11
1/19	Sunday	2:00	Series C Regatta 5	USA 13
1/26	Sunday	2:00	Series D Regatta 1	USA 14
<b>FEBRUARY</b>				
2/2	Sunday	2:00	Series D Regatta 2	USA 15
2/9	Sunday	2:00	Series D Regatta 3	USA 17
2/16	Sunday	2:00	Series D Regatta 4	USA 18
2/23	Sunday	2:00	Series E Regatta 5	USA 19
<b>MARCH</b>				
3/2	Sunday	2:00	Series E Regatta 1	USA 20
3/9	Sunday	2:00	Series E Regatta 2	USA 21
3/16	Sunday	2:00	Series E Regatta 3	USA 23
3/23	Sunday	2:00	Series E Regatta 4	USA 1
3/30	Sunday	2:00	Series E Regatta 5	USA 2
<b>APRIL</b>				
4/6	Sunday	2:00	Series F Regatta 1	USA 3
4/13	Sunday	2:00	Series F Regatta 2	USA 4
4/20	Sunday		No Racing / Happy Easter	
4/27	Sunday	2:00	Series F Regatta 3	USA 6
<b>MAY</b>				
5/2	Friday		Commode Cup	red/white/blue
5/3	Saturday		Opening Day	
5/7	Wednesday	6:00	Series F Regatta 4	USA 7
5/14	Wednesday	6:00	Series G Regatta 1	USA 8
5/21	Wednesday	6:00	Series G Regatta 2	USA 9
5/26	Monday		Memorial Day	
5/28	Wednesday	6:00	Series G Regatta 3	USA 10
<b>JUNE</b>				
6/4	Wednesday	6:00	Series G Regatta 3	USA 11
6/11	Wednesday	6:00	Series G Regatta 4	USA 13
6/18	Wednesday	6:00	Series H Regatta 5	USA 14
6/25	Wednesday	6:00	Series H Regatta 1	USA 15
<b>JULY/AUGUST</b>				
			No Racing – Happy 4 <sup>th</sup>	
<b>SEPT</b>				
			No Racing, Labor Day Weekend	
9/1	Sunday	2:00		
9/7	Sunday	2:00	Maintenance Day	
9/14	Sunday	2:00	Series A Regatta 1	USA 17
9/21	Sunday	2:00	Series A Regatta 2	USA 18
9/28	Sunday	2:00	Series A Regatta 3	USA 19
<b>OCT</b>				
10/5	Sunday	2:00	Series A Regatta 4	USA 20
10/12	Sunday	2:00	Series B Regatta 5	USA 21
10/19	Sunday	2:00	Series B Regatta 1	USA 23
10/26	Sunday	2:00	Series B Regatta 2	USA 1
<b>NOV</b>				
11/2	Sunday	2:00	Series B Regatta 3	USA 2

## Sailboat Cruising Program 2025



We are thrilled to carry on the tradition of cruising here at the club. Cruising is a wonderful opportunity to get the boat off the dock, explore seaside towns, enjoy time with club members, and occasionally insert some competition.

You can register for these events on the Seattle Yacht Club calendar, or by calling the front desk. We are encouraging members to get involved with planning and execution of the cruises.

If you would like to assist with one of the cruises and learn how it's done, please contact Arnie Tinter [atinter@comcast.net](mailto:atinter@comcast.net)

### **2025 Winter/Spring Mini-Cruise Series**

January through May, Seattle Yacht Club cruisers meet at different ports for fun and adventure. This year's destinations are:

- Remote Control Derby at Port Madison, January 4-5
- Seattle Weekend at Bremerton, February 8-9
- Island Weekend at Eagle Harbor, March 1-2
- Warm-up Weekend at Kingston, April 5-6
- Memorial Day Weekend at Poulsbo, May 23-26

## Commodore's Cruise (San Juan and Gulf Islands)

The Commodore's Cruise is a sail and power event! Fun Sailboat races through the Canadian Gulf Islands. Tons of fun! Starts at Henry Island and ends at Oven's Island.

### **Schedule TBD as of 1/24/25 Stand by for updates**

**Dates:** XXXXXXXXXX

Tentative Itinerary:

Sunday	Greenbox at Henry Island 1730 w/event schedule and info
Monday	Race #1 to Sydney, huge Greenbox at Sydney Marina
Tuesday	Race #2 to Ganges, Greenbox at outstation
Wednesday	Lay day, star raft in Montague Harbor
Thursday	Race #3 to Oven's Island, awards, barbeque, prizes
Friday	Oven's Island end of cruise.

**Registration:** Please look for registration to open in February.

**Chairperson:** Phil Calvert, 206-910-7977, [phil.calvert@comcast.net](mailto:phil.calvert@comcast.net)

## Sunshine Coast Cruise (British Columbia)

This is a power and sail event. Destinations and anchorages selected will be weather dependent and large enough to accommodate all boats safely. Be prepared to anchor in 10 fathoms of water. We will raft as much as we can. This is an EXTREMELY COOL semi-official non-event event, meaning there is no charge.

This cruise starts after the Commodore's Cruise at Ovens Island and ends on the doorstep to Desolation Sound at the Cortes Island outstation. We will visit places around the Straits of Georgia rarely seen by SYCers like Lasqueti Island, Hornby Island, Comox, and Savary Island. If you need fuel suggest you fuel up in Nanaimo.

### **Schedule TBD as of 1/24/25 Stand by for updates**

**Dates:** XXXXXXXXXXXXXXX (

Saturday	From Ovens Island to Nanaimo or vicinity. Greenbox. Marina will be selected, fees for moorage will be required.
Sunday	Depart Nanaimo for Lasqueti. Greenbox. Anchor.
Monday	Depart Lasqueti for Tribune Bay. Greenbox. Anchor.
Tuesday	Lay day. Anchor Greenbox
Wednesday	Depart Tribune Bay for Comox Marina via Baynes Sound. Fees for moorage will be required, and dinner at the restaurant.
Thursday	Depart Comox for Savary Island or Gorge Harbor.
Friday	Depart Gorge Harbor for Cortez Island outstation.

**Cruise Coordinator:** Phi Calvert [Phil.Calvert@comcast.net](mailto:Phil.Calvert@comcast.net)

## Spring and Fall Cruise & Snooze

The Cruise & Snooze is a fun race over to Port Madison where you spend the night, and then race back to Seattle the next day. No flying sails are allowed. We use a pursuit format starts so boats start separately but should finish generally together based on the boats' ratings. Potluck dinner with more than enough to eat, and all children are welcome.

### Date:

**Spring:** Races A/B (Saturday/Sunday): June 21-22, 2025

**Fall:** Races C/D (Saturday/Sunday): September 13-14, 2025

**Location:** Puget Sound in the vicinity of Shilshole Bay. The start will be off Shilshole on Saturday, and off Point Monroe on Sunday.

**Course:** The courses will be cruiser/racer and announced prior to racing.

### Time of First Warning:

**Spring:** Races A and C (Saturdays): 1100

**Fall:** Races B and D (Sundays): 1200

**Time Limit:** 1700 each day

**Classes to Race:** Sailboats! Though helpful, you do not need a PHRF-NW rating to race. Performance handicaps will be assigned for this event as necessary.

### Other Provisions:

- Notice of Race amended by SYC Notice of Race Addendum.
- No spinnakers or other flying sails may be used. Only one working sail may be flown on its stay at any time, except during sail changes.
- All races will be pursuit format with handicaps applied at the start.
- SYC members-only event.

**Awards:** Special awards will be made at the conclusion of the Saturday race. Recipients will be selected by the chairpersons. The Cruise & Snooze Cannon Trophy will be awarded to the series overall winner.

**Social Activities:** Green Box at 1700 on Saturday after racing. Dinner will follow at 1830. Main course is provided. When you sign up to attend, please let the Front Desk know whether you will bring a main dish, salad, or dessert for twelve people. A logger's breakfast will be served at 0800 on Sunday morning.

### Registration Deadline:

**Spring:** Races A/B (Saturday/Sunday): June 19, 2025 (Thursday)

**Fall:** Races C/D (Saturday/Sunday): September 11, 2025 (Thursday)

**Registration Fee:** \$75 for A/B, \$75 for C/D. The fee provides for two adults per boat. Please add \$25 extra for each additional adult on board to help pay for food. No charge for kids.

### Event Chairpersons:

**Spring:** Tom Leonard

**Fall:** Tom Leonard



# Sailing School and Junior Race Team

## Summer Sailing School

The Seattle Yacht Club has a long-standing tradition of providing an outstanding Junior Sailing School program for children in the Seattle area. We offer classes for children from 7-17 years of age with a wide variety of class options. Over 600 young sailors participate in a total of 40 classes over a ten-week period each summer. The instructional staff is trained through US Sailing.

Program typically runs from mid-June through late August. Classes run from 9:00 AM - 4:00 PM, Monday through Friday. Students can sign up for a week at a time, and for multiple weeks during the summer!!



Laser sailing in Portage Bay

**Member Registration:** SYC Member Registration begins on March 3.

Open registration for non-members begins on March 17.

After this period, the policy will be first-come, first-served whether member or non-member.

Member Registration period beginning March 3rd includes Members' children, grandchildren, and Junior members.

**Non-member Registration:** Non-member registration will open on Monday, March 17. Class availability will be on a first come, first-served basis.

## Seattle Yacht Club Junior Race Team

The SYC Race Team invites all young sailors to join in the fun, support, friendships, and camaraderie that develop from being a part of a nationally competitive sailing team. SYC Race Team sailors can take part in scheduled practices and enjoy support from our coaching crew at seven regional regattas. Advanced sailors compete in both national and international events, and over the years, the SYC program has helped in the development of many Olympic class sailors as well.



### Northwest Youth Race Circuit Schedule 2025

#### Fleet Racing

- |            |   |
|------------|---|
| June 28-29 | Bellingham Youth Regatta (Bellingham, WA)<br>All Fleets   |
| July 7-10  | WIND CLINIC (Cascade Locks, Oregon)<br>All Fleets   |
| July 12-13 | CGRA WIND Youth Regatta (Cascade Locks, Oregon)<br>All Fleets                                       |
| July 19-20 | USODA NW Opti Championships<br>Opti   |
| Aug 2-3    | Jonny Adams Memorial "JAM" Regatta (Port Madison, WA)<br>All Fleets                                 |
| Aug 23-24  | Northwest Junior Olympics hosted by Seattle Yacht Club<br>Shilshole Bay Marina, Seattle, Washington |
| Sept 6-7   | SSP Octoberfest, Seattle, Washington (Sand Point)<br>All Fleet                                      |



## **Tuesday Night Sailing and Dinner on the Lawn**

Come to the Seattle Yacht Club on Tuesday Nights in the summer for sailing, casual races, dinner, and games on the lawn!!! All the SYC sailboats are available for members and their guests, as well as members of the Race Team.

Sailing Instructors will be on hand to assist participants on and off the water. Younger sailors are encouraged to pair up with parents or older Race Team members!!

Sailing is 5:00pm to 7:00pm on Portage Bay.

Tuesdays, June 24 to August 26, 5:00 to 7:00 PM, except for July 1.

Taco/Burrito bar dinner at 7:00 on the lawn, or order from the menu upstairs and take out to the lawn.



## Opti Green Fleet

Interested in taking the first step to becoming a racer? The Opti Green Fleet is the best place to start for kids ages 8-13. The group meets starting in May on Monday evenings from 5:00 to 7:30 at Seattle Yacht Club on Portage Bay. Using our club boats, you will learn the basics of racing, advanced rigging, and boat handling. A coach will also be on hand at three local regattas.



Opti Green Fleet Sailors with Coach AnaLucia Clarkson

## **Adult Sailing Courses**

Seattle Yacht Club's adult sailing sessions offer an excellent way to get out on the water and learn the basics of small boat sailing. Using the club's Vanguard-15's, Lasers and Fevas, the classes start with the basics including rigging, points of sail, sail trim, boat-handling, and boating safety. Students develop their skills through on-the-water sessions, "chalk talk" discussions, and work in textbooks. Classes are open to all levels.

## **The Small Boat Fleet**

Seattle Yacht Club small boat fleet and support boats includes sixteen Lasers, twenty-five Optimists, thirteen Vanguard 15's, six J/22's, five Avon inflatables, 5 Boston Whalers, 2 Grady White mark-set boats, and the 40' m/v *Portage Bay* which serves as the SYC Race Committee Boat.

The **Optimist** is an eight-foot, kid-sized single-handed dinghy that is easy to manage and fun to sail.

The **Vanguard-15** is the primary training boat at SYC. This stable, double-handed boat with a main and jib is the national standard for novice and advanced sailors to master the basics and to develop teamwork.

The **Laser** is a high-performance single-handed dinghy for intermediate and advanced sailors. It is a great platform to build boat-handling and racing skills. This boat has two different size sails, allowing us to tailor the boat to the weight of the sailor.

The **FEVA** is an ideal entry-level training boat for all ages. This is a double-handed boat with main and jib, and asymmetrical spinnaker. Advanced sailors can rig the spinnaker for a more challenging and faster sail.

The **J/22** fleet is a closely matched set of 6 keelboats available to all SYC members for a small usage fee. Match Racing, Team Racing, one-design regattas, or an afternoon sail are all perfect uses for our new fleet.



## Sailing Office Staff

The Seattle Yacht Club Sailing Office is located at the Portage Bay clubhouse on the lower floor near the south entrance. Please contact the Sailing Office staff for any questions or information.

Brian Ledbetter, Sailing Director

[BrianL@SeattleYachtClub.org](mailto:BrianL@SeattleYachtClub.org)

Christina Travis, Sailing Program Manager

[ChristinaT@SeattleYachtClub.org](mailto:ChristinaT@SeattleYachtClub.org)

Cameron Hoard, Race Team Coach

[CHoard@gmail.com](mailto:CHoard@gmail.com)

Phone: 206-926-1011



**Opti, Fevas and Vanguard 15s on Portage Bay**

# 2024 Season Awards and Recognition

## Junior Sailing Awards

<u>Trophy</u>	<u>Event</u>	<u>Recipient</u>
Bill Burdick Trophy	Junior Sailor of the Year	Kaitlyn Beaver
Ernest Gann Award	Outstanding Instructor	Caroline Schmale Ryan Milne
Captain Lovejoy Trophy	Most Improved Sailor	Sebastian LeRoy
Joe Duthie Trophy	Top Girl – Jr. Olympics	Genevieve Shemwell
Stimson Trophy	Top Boy – Jr. Olympics	Dieter Creitz
Brent Nichols Trophy	Outstanding Sport / Inspirational Sailor	Kate Schmidt
Larry McCarthy Trophy	Perseverance	Alan Timms
Club Championship	Top Crew	Eli Zehnder
Club Championship	Top Skipper	Dieter Creitz

## Outstanding Achievement in Sailing

<u>Trophy</u>	<u>Event</u>	<u>Recipient</u>
Outstanding Cruising Family Trophy	Cruising Sailboat of the Year	Kyle & Kristen Lobisser, <i>New Datum</i>
Ruptured Eardrum Trophy	Outstanding Race Committee Member	Jeff Snell
Bob Gibbons Trophy	One-Design Sailor of the Year	Jay Renehan
Lake Union Sailing Trophy	Outstanding Crew Member	Lisa Renehan
Golden Potlatch Trophy	Outstanding Cruiser/Racer	Phil Calvert <i>Runaway</i>
Kelly O'Neil Henson Trophy	Best SYC Swiftsure	Alan Lubner <i>Zvi</i>
Bates McKee Memorial Trophy	Sailboat of the Year	Lanzinger and Renehan Families <i>Hooligan</i>
Marymont Trophy	Sailor of the Year	Brian Ledbetter
Perpetual Sailboat Trophy	William W. Heylman Memorial Award	Bobbi Campbell

# Leadership Team

Commodore

Vice Commodore

Rear Commodore

Fleet Captain Sail

Junior Commodore

Junior Vice Commodore

Junior Rear Commodore

Junior Secretary

Junior Advisor

Race Committee

Randy Holbrook

Kip Cramer

Jon Tellefson

Tom Leonard

Genevieve Shemwell

Charlotte Esperon

Olivia Bourlier

Cate Fitzgerald

Peggy Bourlier / Scott Kanlyn

John Chuta, James Utzschneider, Phil Calvert, Pat Crockett, Keith Johnson, Chuck Stephens, Brian Ledbetter, Warren Pawley, Fred Pot, Sue Weiss, Ed Snyders, Cameron Hoard, Matt Jones, Regan Edwards, Dan Kerns, Egor Klevak, Doug Bourlier, Tom Leonard, Tanya Riebling, Karl Riebling, Christina Travis, Kathy Briggs, Lara Hubert, John Rempe, Angela Krisinger, Tracy Cambron, Jason Thompson, Tom Stewart, Jennifer Joslyn Sill, Tess Brown

Sailboat Committee Members

Ann Pot, Fred Pot, Will Rademaker, Dan Rees, Lee Rees, Jeff Snell, Ed Snyders, Chuck Stephens, Charlie/Susan Stillman, Will Sugg, Hiroko Sugiyamal, Allan Van Ness, Tom Weingarten, Sue Weiss, Liz Wilder, Warren Wilder, Rob Williams, Arlene Williams, Andrew Zucotti, Ron Barrow, Doug/Peggy Bourlier, Bill Boyesen, Phil Calvert, Stuart Cavness, Iain Christenson, Jack Christiansen, John Chuta, Matt Clevenger, Pat Crockett, John Decker, Dave/Ann Ferguson, Bob Hale, Sheri Hashemi, Jill Hearne, Ryan/Autumn Helling, Jean Higgins, Keith Johnson, Scott Kanlyn, Alex Kimball, Christina-Marie Kimball, Alex Korbonits, Tom Leonard, Bob/Patti Lerman, Jim Medley, Naomi Medley, Charlie Pelly, David Peters, Marda Phelps, Bill Ashby, Allison Christensen, Dan Kerns, Nick Leede, Ken Martin, Pat McCabe, Sue McNab, Mike Stanley, Ryan Helling, Arnie Tinter, Jill Hearne, Lou Phillips, Jeff Snell, Bill Boyesen, Sheridan Ferguson

## Sailing Program Contacts

Fleet Captain Sail	Tom Leonard	<a href="mailto:Tom@damskovconstruction.com">Tom@damskovconstruction.com</a>
Race Committee Chair	James Utzschneider	<a href="mailto:jamesu@outlook.com">jamesu@outlook.com</a>
Cruising Director	Arnie Tinter	<a href="mailto:atinter@comcast.net">atinter@comcast.net</a>
NORPAC Cruise Chair	Stephanie Walchenbach	<a href="mailto:stephanie.orrigo@gmail.com">stephanie.orrigo@gmail.com</a>
Protest Committee Chair	Jeff Snell	<a href="mailto:jeff@jsnellconsulting.com">jeff@jsnellconsulting.com</a>
Race Scoring	James Utzschneider Dan Kerns Susan Weiss	<a href="mailto:jamesu@outlook.com">jamesu@outlook.com</a> <a href="mailto:kerns@pobox.com">kerns@pobox.com</a> <a href="mailto:balsuesails@gmail.com">balsuesails@gmail.com</a>
PHRF-NW Handicapper	Iain Christenson Sheridan Ferguson	<a href="mailto:iainchristenson@gmail.com">iainchristenson@gmail.com</a> <a href="mailto:Sheridan@clanfergus.net">Sheridan@clanfergus.net</a>
PIYA Representative	Keith Johnson	<a href="mailto:kjohnsonna@aol.com">kjohnsonna@aol.com</a>
Mini 12 Fleet Chair	Bill Boyeson	<a href="mailto:j.boyeson@frontier.com">j.boyeson@frontier.com</a>
T-37 Fleet Chair	Allan Van Ness	<a href="mailto:van.ness444@gmail.com">van.ness444@gmail.com</a>
J/22 Fleet Captain / Boat Captains	Kathy Briggs Stuart Cavness	<a href="mailto:kdbriggs@hotmail.com">kdbriggs@hotmail.com</a> <a href="mailto:stuart.cavness@gmail.com">stuart.cavness@gmail.com</a>
Seattle Area Racing Calendar Representative	Brian Ledbetter	<a href="mailto:BrianL@SeattleYachtClub.org">BrianL@SeattleYachtClub.org</a>
Blue Water Chair	Jill Hearne	<a href="mailto:jilhearne@aol.com">jilhearne@aol.com</a>



[www.SeattleYachtClub.org](http://www.SeattleYachtClub.org)

**Please thank our Sponsors for  
supporting sailing and regattas for  
Seattle Yacht Club.**



**Fisheries Supply**

Marine Supplies Since 1928

